

042 - Karori - Location Map

Viewpoint	Location
01	21a Donald Street
02	25 & 27 Donald Street
03	41 Donald Street
04	Corner of Scapa Terrace & 47 Donald Street
05	59 Donald Street
06	13 Scapa Terrace
07	Wrights Hill Road
08	Ben Burn Park Bench
09	Campbell Street - Ben Burn Park entry
10	38 Campbell Street
11	2 Lewer Street
12	Opposite Subway - 234 Karori Road
13	Opposite 210 Karori Road
14	11 Scapa Terrace
15	20 Scapa Terrace





Viewpoint 01 21a Donald Street - Existing

View at 200mm when printed at 100%



Ryman Healthcare
Karori Retirement Village
Visual Simulation

Viewpoint 01
21a Donald Street - Existing

Easting (NZGD 2000 - Wellington Circuit)	397169.6
Northing (NZGD 2000 - Wellington Circuit)	801785.1
Elevation (m)	177.6
Height of Camera (m)	1.65
Date & Time of Photography	3/05/2018 at 1:57pm
Camera Used	Canon EOS 6D 50mm
Orientation of View	SW



Visual Simulation is to be printed and viewed at the following sizes in compliance with NZILA Best Practice Guide 10.2

Primary Horizontal Field of View 124°
Primary Vertical Field of View 55°

This page is to be printed at 100%
At this scale the image is to be viewed at 200mm from the viewer's eyes.



Viewpoint 01 21a Donald Street - Proposed

View at 200mm when printed at 100%



Ryman Healthcare
Karori Retirement Village
Visual Simulation

Viewpoint 01
21a Donald Street - Proposed

Easting (NZGD 2000 - Wellington Circuit)	397169.6
Northing (NZGD 2000 - Wellington Circuit)	801785.1
Elevation (m)	177.6
Height of Camera (m)	1.65
Date & Time of Photography	3/05/2018 at 1:57pm
Camera Used	Canon EOS 6D 50mm
Orientation of View	SW



Visual Simulation is to be printed and viewed at the following sizes in compliance with NZILA Best Practice Guide 10.2

Primary Horizontal Field of View 124°
Primary Vertical Field of View 55°

This page is to be printed at 100%
At this scale the image is to be viewed at 200mm from the viewer's eyes.



Viewpoint 01 21a Donald Street - Proposed (with original structure outlined)

View at 200mm when printed at 100%



Ryman Healthcare
Karori Retirement Village
Visual Simulation

Viewpoint 01
21a Donald Street - Proposed
(with original structure outlined)

Easting (NZGD 2000 - Wellington Circuit)	397169.6
Northing (NZGD 2000 - Wellington Circuit)	801785.1
Elevation (m)	177.6
Height of Camera (m)	1.65
Date & Time of Photography	3/05/2018 at 1:57pm
Camera Used	Canon EOS 6D 50mm
Orientation of View	SW



Visual Simulation is to be printed and viewed at the following sizes in compliance with NZILA Best Practice Guide 10.2

Primary Horizontal Field of View 124°
Primary Vertical Field of View 55°

This page is to be printed at 100%
At this scale the image is to be viewed at 200mm from the viewer's eyes.



Viewpoint 02 25 & 27 Donald Street - Existing

View at 200mm when printed at 100%



Ryman Healthcare
Karori Retirement Village
Visual Simulation

Viewpoint 02
25 & 27 Donald Street - Existing

Easting (NZGD 2000 - Wellington Circuit)	397180.8
Northing (NZGD 2000 - Wellington Circuit)	801754.7
Elevation (m)	178.1
Height of Camera (m)	1.65
Date & Time of Photography	3/05/2018 at 1:38pm
Camera Used	Canon EOS 6D 50mm
Orientation of View	SW



Visual Simulation is to be printed and viewed at the following sizes in compliance with NZILA Best Practice Guide 10.2

Primary Horizontal Field of View 124°
Primary Vertical Field of View 55°

This page is to be printed at 100%
At this scale the image is to be viewed at 200mm from the viewer's eyes.



Viewpoint 02 25 & 27 Donald Street - Proposed

View at 200mm when printed at 100%



Ryman Healthcare
Karori Retirement Village
Visual Simulation

Viewpoint 02
25 & 27 Donald Street - Proposed

Easting (NZGD 2000 - Wellington Circuit)	397180.8
Northing (NZGD 2000 - Wellington Circuit)	801754.7
Elevation (m)	178.1
Height of Camera (m)	1.65
Date & Time of Photography	3/05/2018 at 1:38pm
Camera Used	Canon EOS 6D 50mm
Orientation of View	SW



Visual Simulation is to be printed and viewed at the following sizes in compliance with NZILA Best Practice Guide 10.2

Primary Horizontal Field of View 124°
Primary Vertical Field of View 55°

This page is to be printed at 100%
At this scale the image is to be viewed at 200mm from the viewer's eyes.



Viewpoint 02 25 & 27 Donald Street - Proposed (with original structure outlined)

View at 200mm when printed at 100%



Ryman Healthcare
Karori Retirement Village
Visual Simulation

Viewpoint 02
25 & 27 Donald Street - Proposed
(with original structure outlined)

Easting (NZGD 2000 - Wellington Circuit)	397180.8
Northing (NZGD 2000 - Wellington Circuit)	801754.7
Elevation (m)	178.1
Height of Camera (m)	1.65
Date & Time of Photography	3/05/2018 at 1:38pm
Camera Used	Canon EOS 6D 50mm
Orientation of View	SW



Visual Simulation is to be printed and viewed at the following sizes in compliance with NZILA Best Practice Guide 10.2

Primary Horizontal Field of View 124°
Primary Vertical Field of View 55°

This page is to be printed at 100%
At this scale the image is to be viewed at 200mm from the viewer's eyes.



Viewpoint 03 41 Donald Street - Existing

View at 200mm when printed at 100%



Ryman Healthcare
 Karori Retirement Village
 Visual Simulation

Viewpoint 03
 41 Donald Street - Existing

Easting (NZGD 2000 - Wellington Circuit)	397225.8
Northing (NZGD 2000 - Wellington Circuit)	801636.8
Elevation (m)	169.5
Height of Camera (m)	1.62
Date & Time of Photography	3/05/2018 at 12:40pm
Camera Used	Canon EOS 6D 50mm
Orientation of View	NW



Visual Simulation is to be printed and viewed at the following sizes in compliance with NZILA Best Practice Guide 10.2

Primary Horizontal Field of View 124°
 Primary Vertical Field of View 55°

This page is to be printed at 100%
 At this scale the image is to be viewed at 200mm from the viewer's eyes.



Viewpoint 03 41 Donald Street - Proposed

View at 200mm when printed at 100%



Ryman Healthcare
Karori Retirement Village
Visual Simulation

Viewpoint 03
41 Donald Street - Proposed

Easting (NZGD 2000 - Wellington Circuit)	397225.8
Northing (NZGD 2000 - Wellington Circuit)	801636.8
Elevation (m)	169.5
Height of Camera (m)	1.62
Date & Time of Photography	3/05/2018 at 12:40pm
Camera Used	Canon EOS 6D 50mm
Orientation of View	NW



Visual Simulation is to be printed and viewed at the following sizes in compliance with NZILA Best Practice Guide 10.2

Primary Horizontal Field of View 124°
Primary Vertical Field of View 55°

This page is to be printed at 100%
At this scale the image is to be viewed at 200mm from the viewer's eyes.



Viewpoint 03 41 Donald Street - Proposed (with foreground car removed)

View at 200mm when printed at 100%



Ryman Healthcare
Karori Retirement Village
Visual Simulation

Viewpoint 03
41 Donald Street - Proposed
(with foreground car removed)

Easting (NZGD 2000 - Wellington Circuit)	397225.8
Northing (NZGD 2000 - Wellington Circuit)	801636.8
Elevation (m)	169.5
Height of Camera (m)	1.62
Date & Time of Photography	3/05/2018 at 12:40pm
Camera Used	Canon EOS 6D 50mm
Orientation of View	NW



Visual Simulation is to be printed and viewed at the following sizes in compliance with NZILA Best Practice Guide 10.2

Primary Horizontal Field of View 124°
Primary Vertical Field of View 55°

This page is to be printed at 100%
At this scale the image is to be viewed at 200mm from the viewer's eyes.



Viewpoint 04 Corner of Scapa Terrace & 47 Donald Street - Existing

View at 200mm when printed at 100%



Ryman Healthcare
Karori Retirement Village
Visual Simulation

Viewpoint 04
Corner of Scapa Tce & 47 Donald St - Existing

Easting (NZGD 2000 - Wellington Circuit)	397240.5
Northing (NZGD 2000 - Wellington Circuit)	801598.4
Elevation (m)	172.2
Height of Camera (m)	1.62
Date & Time of Photography	3/05/2018 at 12:26pm
Camera Used	Canon EOS 6D 50mm
Orientation of View	NW



Visual Simulation is to be printed and viewed at the following sizes in compliance with NZILA Best Practice Guide 10.2

Primary Horizontal Field of View 124°
Primary Vertical Field of View 55°

This page is to be printed at 100%
At this scale the image is to be viewed at 200mm from the viewer's eyes.



Viewpoint 04 Corner of Scapa Terrace & 47 Donald Street - Proposed

View at 200mm when printed at 100%



Ryman Healthcare
 Karori Retirement Village
 Visual Simulation

Viewpoint 04
 Corner of Scapa Tce & 47 Donald St - Proposed

Easting (NZGD 2000 - Wellington Circuit)	397240.5
Northing (NZGD 2000 - Wellington Circuit)	801598.4
Elevation (m)	172.2
Height of Camera (m)	1.62
Date & Time of Photography	3/05/2018 at 12:26pm
Camera Used	Canon EOS 6D 50mm
Orientation of View	NW



Visual Simulation is to be printed and viewed at the following sizes in compliance with NZILA Best Practice Guide 10.2

Primary Horizontal Field of View 124°
 Primary Vertical Field of View 55°

This page is to be printed at 100%
 At this scale the image is to be viewed at 200mm from the viewer's eyes.



Viewpoint 04 Corner of Scapa Terrace & 47 Donald Street - Proposed (with original structure outlined)

View at 200mm when printed at 100%

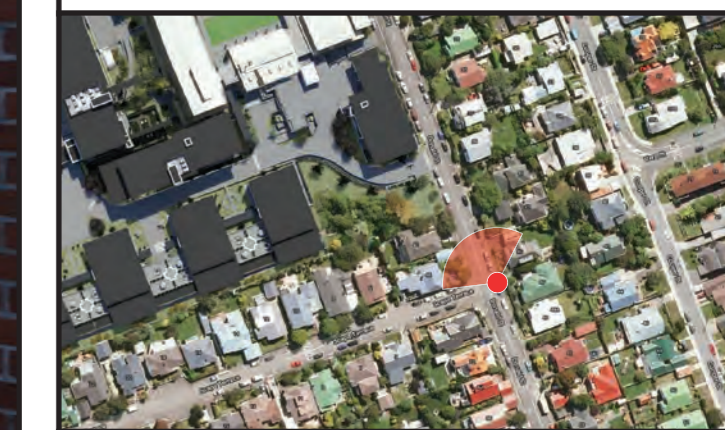


Ryman Healthcare
Karori Retirement Village
Visual Simulation

Viewpoint 04

Corner of Scapa Tce & 47 Donald St - Proposed
(with original structure outlined)

Easting (NZGD 2000 - Wellington Circuit)	397240.5
Northing (NZGD 2000 - Wellington Circuit)	801598.4
Elevation (m)	172.2
Height of Camera (m)	1.62
Date & Time of Photography	3/05/2018 at 12:26pm
Camera Used	Canon EOS 6D 50mm
Orientation of View	NW



Visual Simulation is to be printed and viewed at the following sizes in compliance with NZILA Best Practice Guide 10.2

Primary Horizontal Field of View 124°
Primary Vertical Field of View 55°

This page is to be printed at 100%
At this scale the image is to be viewed at 200mm from the viewer's eyes.



Viewpoint 05 59 Donald Street - Existing

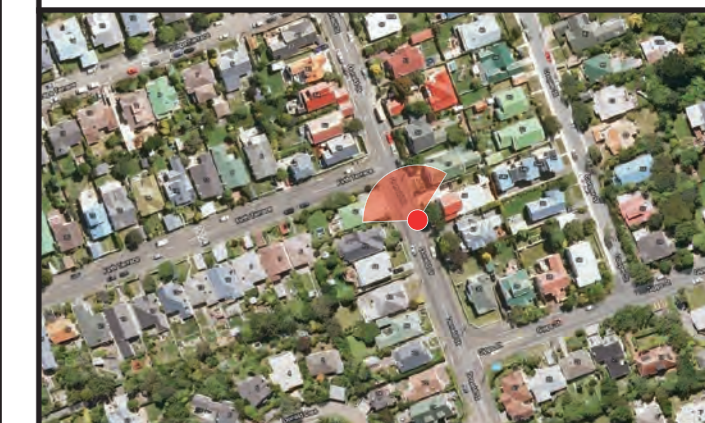
View at 200mm when printed at 100%



Ryman Healthcare
Karori Retirement Village
Visual Simulation

Viewpoint 05
59 Donald Street - Existing

Easting (NZGD 2000 - Wellington Circuit)	397278.6
Northing (NZGD 2000 - Wellington Circuit)	801498.4
Elevation (m)	179
Height of Camera (m)	1.68
Date & Time of Photography	3/05/2018 at 11:25am
Camera Used	Canon EOS 6D 50mm
Orientation of View	NW



Visual Simulation is to be printed and viewed at the following sizes in compliance with NZILA Best Practice Guide 10.2

Primary Horizontal Field of View 124°
Primary Vertical Field of View 55°

This page is to be printed at 100%
At this scale the image is to be viewed at 200mm from the viewer's eyes.



Viewpoint 05 59 Donald Street - Proposed

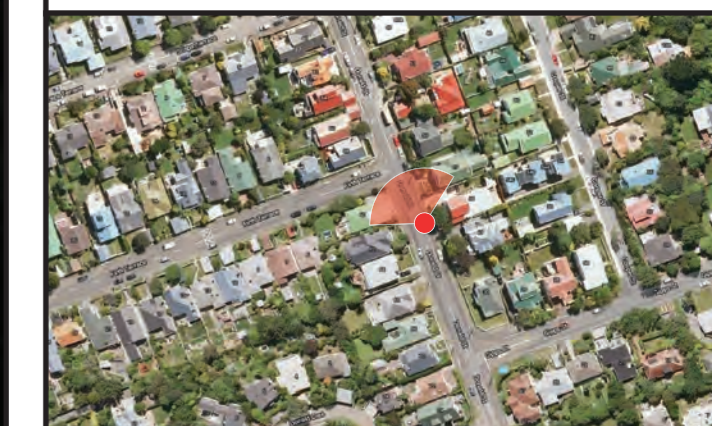
View at 200mm when printed at 100%



Ryman Healthcare
Karori Retirement Village
Visual Simulation

Viewpoint 05
59 Donald Street - Proposed

Easting (NZGD 2000 - Wellington Circuit)	397278.6
Northing (NZGD 2000 - Wellington Circuit)	801498.4
Elevation (m)	179
Height of Camera (m)	1.68
Date & Time of Photography	3/05/2018 at 11:25am
Camera Used	Canon EOS 6D 50mm
Orientation of View	NW



Visual Simulation is to be printed and viewed at the following sizes in compliance with NZILA Best Practice Guide 10.2

Primary Horizontal Field of View 124°
Primary Vertical Field of View 55°

This page is to be printed at 100%
At this scale the image is to be viewed at 200mm from the viewer's eyes.



Viewpoint 05

59 Donald Street - Proposed (with original structure outlined)

View at 200mm when printed at 100%

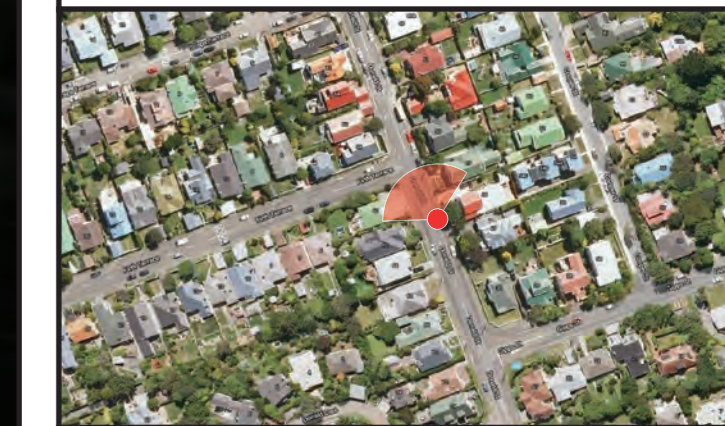


Ryman Healthcare
Karori Retirement Village
Visual Simulation

Viewpoint 05

59 Donald Street - Proposed
(with original structure outlined)

Easting (NZGD 2000 - Wellington Circuit)	397278.6
Northing (NZGD 2000 - Wellington Circuit)	801498.4
Elevation (m)	179
Height of Camera (m)	1.68
Date & Time of Photography	3/05/2018 at 11:25am
Camera Used	Canon EOS 6D 50mm
Orientation of View	NW



Visual Simulation is to be printed and viewed at the following sizes in compliance with NZILA Best Practice Guide 10.2

Primary Horizontal Field of View 124°
Primary Vertical Field of View 55°

This page is to be printed at 100%
At this scale the image is to be viewed at 200mm from the viewer's eyes.



Viewpoint 06 13 Scapa Terrace - Existing

View at 200mm when printed at 100%



Ryman Healthcare
Karori Retirement Village
Visual Simulation

Viewpoint 06
13 Scapa Terrace - Existing

Easting (NZGD 2000 - Wellington Circuit)	397122.4
Northing (NZGD 2000 - Wellington Circuit)	801551.5
Elevation (m)	169.3
Height of Camera (m)	1.66
Date & Time of Photography	3/05/2018 at 11:56am
Camera Used	Canon EOS 6D 50mm
Orientation of View	NNW



Visual Simulation is to be printed and viewed at the following sizes in compliance with NZILA Best Practice Guide 10.2

Primary Horizontal Field of View 124°
Primary Vertical Field of View 55°

This page is to be printed at 100%
At this scale the image is to be viewed at 200mm from the viewer's eyes.



Viewpoint 06 13 Scapa Terrace - Proposed

View at 200mm when printed at 100%



Ryman Healthcare
Karori Retirement Village
Visual Simulation

Viewpoint 06
13 Scapa Terrace - Proposed

Easting (NZGD 2000 - Wellington Circuit)	397122.4
Northing (NZGD 2000 - Wellington Circuit)	801551.5
Elevation (m)	169.3
Height of Camera (m)	1.66
Date & Time of Photography	3/05/2018 at 11:56am
Camera Used	Canon EOS 6D 50mm
Orientation of View	NNW



Visual Simulation is to be printed and viewed at the following sizes in compliance with NZILA Best Practice Guide 10.2

Primary Horizontal Field of View 124°
Primary Vertical Field of View 55°

This page is to be printed at 100%
At this scale the image is to be viewed at 200mm from the viewer's eyes.



Viewpoint 07 Wrights Hill Road - Existing

View at 200mm when printed at 100%



Ryman Healthcare
Karori Retirement Village
Visual Simulation

Viewpoint 07
Wrights Hill Road - Existing

Easting (NZGD 2000 - Wellington Circuit)	396839.4
Northing (NZGD 2000 - Wellington Circuit)	800893.6
Elevation (m)	266.5
Height of Camera (m)	1.65
Date & Time of Photography	4/05/2018 at 12:30pm
Camera Used	Canon EOS 6D 50mm
Orientation of View	NNE



Visual Simulation is to be printed and viewed at the following sizes in compliance with NZILA Best Practice Guide 10.2

Primary Horizontal Field of View 124°
Primary Vertical Field of View 55°

This page is to be printed at 100%
At this scale the image is to be viewed at 200mm from the viewer's eyes.



Viewpoint 07 Wrights Hill Road - Proposed

View at 200mm when printed at 100%



Ryman Healthcare
Karori Retirement Village
Visual Simulation

Viewpoint 07
Wrights Hill Road - Proposed

Easting (NZGD 2000 - Wellington Circuit)	396839.4
Northing (NZGD 2000 - Wellington Circuit)	800893.6
Elevation (m)	266.5
Height of Camera (m)	1.65
Date & Time of Photography	4/05/2018 at 12:30pm
Camera Used	Canon EOS 6D 50mm
Orientation of View	NNE



Visual Simulation is to be printed and viewed at the following sizes in compliance with NZILA Best Practice Guide 10.2

Primary Horizontal Field of View 124°
Primary Vertical Field of View 55°

This page is to be printed at 100%
At this scale the image is to be viewed at 200mm from the viewer's eyes.



Viewpoint 07 Wrights Hill Road - Proposed (with original structure outlined)

View at 200mm when printed at 100%



Ryman Healthcare
Karori Retirement Village
Visual Simulation

Viewpoint 07
Wrights Hill Road - Proposed
(with original structure outlined)

Easting (NZGD 2000 - Wellington Circuit)	396839.4
Northing (NZGD 2000 - Wellington Circuit)	800893.6
Elevation (m)	266.5
Height of Camera (m)	1.65
Date & Time of Photography	4/05/2018 at 12:30pm
Camera Used	Canon EOS 6D 50mm
Orientation of View	NNE



Visual Simulation is to be printed and viewed at the following sizes in compliance with NZILA Best Practice Guide 10.2

Primary Horizontal Field of View 124°
Primary Vertical Field of View 55°

This page is to be printed at 100%
At this scale the image is to be viewed at 200mm from the viewer's eyes.



Viewpoint 08 Ben Burn Park Bench - Existing

View at 200mm when printed at 100%



Ryman Healthcare
Karori Retirement Village
Visual Simulation

Viewpoint 08
Ben Burn Park Bench - Existing

Easting (NZGD 2000 - Wellington Circuit)	396966.8
Northing (NZGD 2000 - Wellington Circuit)	801360.3
Elevation (m)	176.4
Height of Camera (m)	1.68
Date & Time of Photography	4/05/2018 at 12:13pm
Camera Used	Canon EOS 6D 50mm
Orientation of View	NNE



Visual Simulation is to be printed and viewed at the following sizes in compliance with NZILA Best Practice Guide 10.2

Primary Horizontal Field of View 124°
Primary Vertical Field of View 55°

This page is to be printed at 100%
At this scale the image is to be viewed at 200mm from the viewer's eyes.



Viewpoint 08 Ben Burn Park Bench - Proposed

View at 200mm when printed at 100%



Ryman Healthcare
Karori Retirement Village
Visual Simulation

Viewpoint 08
Ben Burn Park Bench - Proposed

Easting (NZGD 2000 - Wellington Circuit)	396966.8
Northing (NZGD 2000 - Wellington Circuit)	801360.3
Elevation (m)	176.4
Height of Camera (m)	1.68
Date & Time of Photography	4/05/2018 at 12:13pm
Camera Used	Canon EOS 6D 50mm
Orientation of View	NNE



Visual Simulation is to be printed and viewed at the following sizes in compliance with NZILA Best Practice Guide 10.2

Primary Horizontal Field of View 124°
Primary Vertical Field of View 55°

This page is to be printed at 100%
At this scale the image is to be viewed at 200mm from the viewer's eyes.



Viewpoint 08 Ben Burn Park Bench - Proposed (with original structure outlined)

View at 200mm when printed at 100%



Ryman Healthcare
Karori Retirement Village
Visual Simulation

Viewpoint 08

Ben Burn Park Bench - Proposed
(with original structure outlined)

Easting (NZGD 2000 - Wellington Circuit)	396966.8
Northing (NZGD 2000 - Wellington Circuit)	801360.3
Elevation (m)	176.4
Height of Camera (m)	1.68
Date & Time of Photography	4/05/2018 at 12:13pm
Camera Used	Canon EOS 6D 50mm
Orientation of View	NNE



Visual Simulation is to be printed and viewed at the following sizes in compliance with NZILA Best Practice Guide 10.2

Primary Horizontal Field of View 124°
Primary Vertical Field of View 55°

This page is to be printed at 100%
At this scale the image is to be viewed at 200mm from the viewer's eyes.



Viewpoint 09 Campbell Street - Ben Burn Park entry - Existing

View at 200mm when printed at 100%



Ryman Healthcare
Karori Retirement Village
Visual Simulation

Viewpoint 09
Campbell Street - Ben Burn Park entry - Existing

Easting (NZGD 2000 - Wellington Circuit)	396990.8
Northing (NZGD 2000 - Wellington Circuit)	801520.1
Elevation (m)	170.3
Height of Camera (m)	1.64
Date & Time of Photography	3/05/2018 at 3:53pm
Camera Used	Canon EOS 6D 50mm
Orientation of View	NE



Visual Simulation is to be printed and viewed at the following sizes in compliance with NZILA Best Practice Guide 10.2

Primary Horizontal Field of View 124°
Primary Vertical Field of View 55°

This page is to be printed at 100%
At this scale the image is to be viewed at 200mm from the viewer's eyes.



Viewpoint 09 Campbell Street - Ben Burn Park entry - Proposed

View at 200mm when printed at 100%



Ryman Healthcare
Karori Retirement Village
Visual Simulation

Viewpoint 09
Campbell Street - Ben Burn Park entry - Proposed

Easting (NZGD 2000 - Wellington Circuit)	396990.8
Northing (NZGD 2000 - Wellington Circuit)	801520.1
Elevation (m)	170.3
Height of Camera (m)	1.64
Date & Time of Photography	3/05/2018 at 3:53pm
Camera Used	Canon EOS 6D 50mm
Orientation of View	NE



Visual Simulation is to be printed and viewed at the following sizes in compliance with NZILA Best Practice Guide 10.2

Primary Horizontal Field of View 124°
Primary Vertical Field of View 55°

This page is to be printed at 100%
At this scale the image is to be viewed at 200mm from the viewer's eyes.



Viewpoint 09 Campbell Street - Ben Burn Park entry - Proposed (with original structure outlined)

View at 200mm when printed at 100%



Ryman Healthcare
Karori Retirement Village
Visual Simulation

Viewpoint 09

Campbell Street - Ben Burn Park entry - Proposed
(with original structure outlined)

Easting (NZGD 2000 - Wellington Circuit)	396990.8
Northing (NZGD 2000 - Wellington Circuit)	801520.1
Elevation (m)	170.3
Height of Camera (m)	1.64
Date & Time of Photography	3/05/2018 at 3:53pm
Camera Used	Canon EOS 6D 50mm
Orientation of View	NE



Visual Simulation is to be printed and viewed at the following sizes in compliance with NZILA Best Practice Guide 10.2

Primary Horizontal Field of View 124°
Primary Vertical Field of View 55°

This page is to be printed at 100%
At this scale the image is to be viewed at 200mm from the viewer's eyes.



Viewpoint 10 38 Campbell Street - Existing

View at 200mm when printed at 100%



Ryman Healthcare
Karori Retirement Village
Visual Simulation

Viewpoint 10
38 Campbell Street - Existing

Easting (NZGD 2000 - Wellington Circuit)	396969.8
Northing (NZGD 2000 - Wellington Circuit)	801565.8
Elevation (m)	168.8
Height of Camera (m)	1.61
Date & Time of Photography	3/05/2018 at 3:41pm
Camera Used	Canon EOS 6D 50mm
Orientation of View	ENE



Visual Simulation is to be printed and viewed at the following sizes in compliance with NZILA Best Practice Guide 10.2

Primary Horizontal Field of View 124°
Primary Vertical Field of View 55°

This page is to be printed at 100%
At this scale the image is to be viewed at 200mm from the viewer's eyes.



Viewpoint 10 38 Campbell Street - Proposed

View at 200mm when printed at 100%



Ryman Healthcare
Karori Retirement Village
Visual Simulation

Viewpoint 10
38 Campbell Street - Proposed

Easting (NZGD 2000 - Wellington Circuit)	396969.8
Northing (NZGD 2000 - Wellington Circuit)	801565.8
Elevation (m)	168.8
Height of Camera (m)	1.61
Date & Time of Photography	3/05/2018 at 3:41pm
Camera Used	Canon EOS 6D 50mm
Orientation of View	ENE



Visual Simulation is to be printed and viewed at the following sizes in compliance with NZILA Best Practice Guide 10.2

Primary Horizontal Field of View 124°
Primary Vertical Field of View 55°

This page is to be printed at 100%
At this scale the image is to be viewed at 200mm from the viewer's eyes.



Viewpoint 11 2 Lower Street - Existing

View at 200mm when printed at 100%



Ryman Healthcare
Karori Retirement Village
Visual Simulation

Viewpoint 11
2 Lower Street - Existing

Easting (NZGD 2000 - Wellington Circuit)	396898.9
Northing (NZGD 2000 - Wellington Circuit)	801679.8
Elevation (m)	165.5
Height of Camera (m)	1.61
Date & Time of Photography	3/05/2018 at 3:04pm
Camera Used	Canon EOS 6D 50mm
Orientation of View	ESE



Visual Simulation is to be printed and viewed at the following sizes in compliance with NZILA Best Practice Guide 10.2

Primary Horizontal Field of View 124°
Primary Vertical Field of View 55°

This page is to be printed at 100%
At this scale the image is to be viewed at 200mm from the viewer's eyes.



Viewpoint 11 2 Lewer Street - Proposed

View at 200mm when printed at 100%



Ryman Healthcare
Karori Retirement Village
Visual Simulation

Viewpoint 11
2 Lewer Street - Proposed

Easting (NZGD 2000 - Wellington Circuit)	396898.9
Northing (NZGD 2000 - Wellington Circuit)	801679.8
Elevation (m)	165.5
Height of Camera (m)	1.61
Date & Time of Photography	3/05/2018 at 3:04pm
Camera Used	Canon EOS 6D 50mm
Orientation of View	ESE



Visual Simulation is to be printed and viewed at the following sizes in compliance with NZILA Best Practice Guide 10.2

Primary Horizontal Field of View 124°
Primary Vertical Field of View 55°

This page is to be printed at 100%
At this scale the image is to be viewed at 200mm from the viewer's eyes.



Viewpoint 11 2 Lewer Street - Proposed (with original structure outlined)

View at 200mm when printed at 100%



Ryman Healthcare
Karori Retirement Village
Visual Simulation

Viewpoint 11
2 Lewer Street - Proposed
(with original structure outlined)

Easting (NZGD 2000 - Wellington Circuit)	396898.9
Northing (NZGD 2000 - Wellington Circuit)	801679.8
Elevation (m)	165.5
Height of Camera (m)	1.61
Date & Time of Photography	3/05/2018 at 3:04pm
Camera Used	Canon EOS 6D 50mm
Orientation of View	ESE



Visual Simulation is to be printed and viewed at the following sizes in compliance with NZILA Best Practice Guide 10.2

Primary Horizontal Field of View 124°
Primary Vertical Field of View 55°

This page is to be printed at 100%
At this scale the image is to be viewed at 200mm from the viewer's eyes.



Viewpoint 12 Opposite Subway - 234 Karori Road - Existing

View at 200mm when printed at 100%



Ryman Healthcare
Karori Retirement Village
Visual Simulation

Viewpoint 12
Opposite Subway - 234 Karori Road - Existing

Easting (NZGD 2000 - Wellington Circuit)	396844.6
Northing (NZGD 2000 - Wellington Circuit)	801848.7
Elevation (m)	160.9
Height of Camera (m)	1.66
Date & Time of Photography	3/05/2018 at 2:51pm
Camera Used	Canon EOS 6D 50mm
Orientation of View	SE



Visual Simulation is to be printed and viewed at the following sizes in compliance with NZILA Best Practice Guide 10.2

Primary Horizontal Field of View 124°
Primary Vertical Field of View 55°

This page is to be printed at 100%
At this scale the image is to be viewed at 200mm from the viewer's eyes.



Viewpoint 12 Opposite Subway - 234 Karori Road - Proposed

View at 200mm when printed at 100%



Ryman Healthcare
Karori Retirement Village
Visual Simulation

Viewpoint 12
Opposite Subway - 234 Karori Road - Proposed

Easting (NZGD 2000 - Wellington Circuit)	396844.6
Northing (NZGD 2000 - Wellington Circuit)	801848.7
Elevation (m)	160.9
Height of Camera (m)	1.66
Date & Time of Photography	3/05/2018 at 2:51pm
Camera Used	Canon EOS 6D 50mm
Orientation of View	SE



Visual Simulation is to be printed and viewed at the following sizes in compliance with NZILA Best Practice Guide 10.2

Primary Horizontal Field of View 124°
Primary Vertical Field of View 55°

This page is to be printed at 100%
At this scale the image is to be viewed at 200mm from the viewer's eyes.



Viewpoint 12 Opposite Subway - 234 Karori Road - Proposed (with original structure outlined)

View at 200mm when printed at 100%



Ryman Healthcare
Karori Retirement Village
Visual Simulation

Viewpoint 12
Opposite Subway - 234 Karori Road - Proposed
(with original structure outlined)

Easting (NZGD 2000 - Wellington Circuit)	396844.6
Northing (NZGD 2000 - Wellington Circuit)	801848.7
Elevation (m)	160.9
Height of Camera (m)	1.66
Date & Time of Photography	3/05/2018 at 2:51pm
Camera Used	Canon EOS 6D 50mm
Orientation of View	SE



Visual Simulation is to be printed and viewed at the following sizes in compliance with NZILA Best Practice Guide 10.2

Primary Horizontal Field of View 124°
Primary Vertical Field of View 55°

This page is to be printed at 100%
At this scale the image is to be viewed at 200mm from the viewer's eyes.



Viewpoint 13 Opposite 210 Karori Road - Existing

View at 200mm when printed at 100%



Ryman Healthcare
Karori Retirement Village
Visual Simulation

Viewpoint 13
Opposite 210 Karori Road - Existing

Easting (NZGD 2000 - Wellington Circuit)	397015.1
Northing (NZGD 2000 - Wellington Circuit)	801912.9
Elevation (m)	171.9
Height of Camera (m)	1.63
Date & Time of Photography	3/05/2018 at 2:35pm
Camera Used	Canon EOS 6D 50mm
Orientation of View	S



Visual Simulation is to be printed and viewed at the following sizes in compliance with NZILA Best Practice Guide 10.2

Primary Horizontal Field of View 124°
Primary Vertical Field of View 55°

This page is to be printed at 100%
At this scale the image is to be viewed at 200mm from the viewer's eyes.



Viewpoint 13 Opposite 210 Karori Road - Proposed

View at 200mm when printed at 100%



Ryman Healthcare
Karori Retirement Village
Visual Simulation

Viewpoint 13
Opposite 210 Karori Road - Proposed

Easting (NZGD 2000 - Wellington Circuit)	397015.1
Northing (NZGD 2000 - Wellington Circuit)	801912.9
Elevation (m)	171.9
Height of Camera (m)	1.63
Date & Time of Photography	3/05/2018 at 2:35pm
Camera Used	Canon EOS 6D 50mm
Orientation of View	S



Visual Simulation is to be printed and viewed at the following sizes in compliance with NZILA Best Practice Guide 10.2

Primary Horizontal Field of View 124°
Primary Vertical Field of View 55°

This page is to be printed at 100%
At this scale the image is to be viewed at 200mm from the viewer's eyes.



Viewpoint 13 Opposite 210 Karori Road - Proposed (with original structure outlined)

View at 200mm when printed at 100%



Ryman Healthcare
Karori Retirement Village
Visual Simulation

Viewpoint 13
Opposite 210 Karori Road - Proposed
(with original structure outlined)

Easting (NZGD 2000 - Wellington Circuit)	397015.1
Northing (NZGD 2000 - Wellington Circuit)	801912.9
Elevation (m)	171.9
Height of Camera (m)	1.63
Date & Time of Photography	3/05/2018 at 2:35pm
Camera Used	Canon EOS 6D 50mm
Orientation of View	S



Visual Simulation is to be printed and viewed at the following sizes in compliance with NZILA Best Practice Guide 10.2

Primary Horizontal Field of View 124°
Primary Vertical Field of View 55°

This page is to be printed at 100%
At this scale the image is to be viewed at 200mm from the viewer's eyes.



Viewpoint 14 11 Scapa Terrace - Existing

View at 200mm when printed at 100%



Ryman Healthcare
Karori Retirement Village
Visual Simulation

Viewpoint 14
11 Scapa Terrace - Existing

Easting (NZGD 2000 - Wellington Circuit)	397139.9
Northing (NZGD 2000 - Wellington Circuit)	801557.6
Elevation (m)	169.7
Height of Camera (m)	1.63
Date & Time of Photography	3/05/2018 at 12:11pm
Camera Used	Canon EOS 6D 50mm
Orientation of View	NNW



Visual Simulation is to be printed and viewed at the following sizes in compliance with NZILA Best Practice Guide 10.2

Primary Horizontal Field of View 124°
Primary Vertical Field of View 55°

This page is to be printed at 100%
At this scale the image is to be viewed at 200mm from the viewer's eyes.



Viewpoint 14 11 Scapa Terrace - Proposed

View at 200mm when printed at 100%



Ryman Healthcare
Karori Retirement Village
Visual Simulation

Viewpoint 14
11 Scapa Terrace - Proposed

Easting (NZGD 2000 - Wellington Circuit)	397139.9
Northing (NZGD 2000 - Wellington Circuit)	801557.6
Elevation (m)	169.7
Height of Camera (m)	1.63
Date & Time of Photography	3/05/2018 at 12:11pm
Camera Used	Canon EOS 6D 50mm
Orientation of View	NNW



Visual Simulation is to be printed and viewed at the following sizes in compliance with NZILA Best Practice Guide 10.2

Primary Horizontal Field of View 124°
Primary Vertical Field of View 55°

This page is to be printed at 100%
At this scale the image is to be viewed at 200mm from the viewer's eyes.



Viewpoint 14

11 Scapa Terrace - Proposed (with original structure outlined)

View at 200mm when printed at 100%



Ryman Healthcare
 Karori Retirement Village
 Visual Simulation

Viewpoint 14
 11 Scapa Terrace - Proposed
 (with original structure outlined)

Easting (NZGD 2000 - Wellington Circuit)	397139.9
Northing (NZGD 2000 - Wellington Circuit)	801557.6
Elevation (m)	169.7
Height of Camera (m)	1.63
Date & Time of Photography	3/05/2018 at 12:11pm
Camera Used	Canon EOS 6D 50mm
Orientation of View	NNW



Visual Simulation is to be printed and viewed at the following sizes in compliance with NZILA Best Practice Guide 10.2

Primary Horizontal Field of View 124°
 Primary Vertical Field of View 55°

This page is to be printed at 100%
 At this scale the image is to be viewed at 200mm from the viewer's eyes.



Viewpoint 15 20 Scapa Terrace - Existing

View at 200mm when printed at 100%



Ryman Healthcare
Karori Retirement Village
Visual Simulation

Viewpoint 15
20 Scapa Terrace - Existing

Easting (NZGD 2000 - Wellington Circuit)	397070.7
Northing (NZGD 2000 - Wellington Circuit)	801542.4
Elevation (m)	168.2
Height of Camera (m)	1.63
Date & Time of Photography	4/05/2018 at 10:04am
Camera Used	Canon EOS 6D 50mm
Orientation of View	N



Visual Simulation is to be printed and viewed at the following sizes in compliance with NZILA Best Practice Guide 10.2

Primary Horizontal Field of View 124°
Primary Vertical Field of View 55°

This page is to be printed at 100%
At this scale the image is to be viewed at 200mm from the viewer's eyes.



Viewpoint 15 20 Scapa Terrace - Proposed

View at 200mm when printed at 100%



Ryman Healthcare
Karori Retirement Village
Visual Simulation

Viewpoint 15
20 Scapa Terrace - Proposed

Easting (NZGD 2000 - Wellington Circuit)	397070.7
Northing (NZGD 2000 - Wellington Circuit)	801542.4
Elevation (m)	168.2
Height of Camera (m)	1.63
Date & Time of Photography	4/05/2018 at 10:04am
Camera Used	Canon EOS 6D 50mm
Orientation of View	N



Visual Simulation is to be printed and viewed at the following sizes in compliance with NZILA Best Practice Guide 10.2

Primary Horizontal Field of View 124°
Primary Vertical Field of View 55°

This page is to be printed at 100%
At this scale the image is to be viewed at 200mm from the viewer's eyes.



Viewpoint 15 20 Scapa Terrace - Proposed (with original structure outlined)

View at 200mm when printed at 100%



Ryman Healthcare
Karori Retirement Village
Visual Simulation

Viewpoint 15
20 Scapa Terrace - Proposed
(with original structure outlined)

Easting (NZGD 2000 - Wellington Circuit)	397070.7
Northing (NZGD 2000 - Wellington Circuit)	801542.4
Elevation (m)	168.2
Height of Camera (m)	1.63
Date & Time of Photography	4/05/2018 at 10:04am
Camera Used	Canon EOS 6D 50mm
Orientation of View	N



Visual Simulation is to be printed and viewed at the following sizes in compliance with NZILA Best Practice Guide 10.2

Primary Horizontal Field of View 124°
Primary Vertical Field of View 55°

This page is to be printed at 100%
At this scale the image is to be viewed at 200mm from the viewer's eyes.