

# ADELAIDE PROJECT

114 ADELAIDE ROAD, NEWTOWN  
RC Application Drawing Set

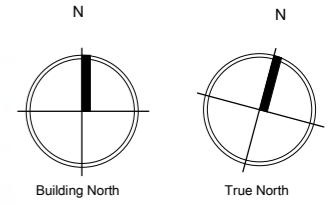
## DRAWING SCHEDULE:

- A-000 COVER SHEET
- A-100 BASEMENT LEVEL
- A-101 GROUND FLOOR
- A-102 LEVEL 01
- A-103 LEVELS 02-06
- A-104 LEVEL 07
- A-105 NORTH & EAST ELEVATIONS
- A-106 SOUTH & WEST ELEVATIONS
  
- A-150 BASEMENT AREA PLAN
- A-151 GROUND FLOOR AREA PLAN
- A-152 LEVEL 01 AREA PLAN
- A-153 LEVELS 02-06 AREA PLAN
- A-154 LEVEL 07 AREA PLAN
  
- A-200 3D VIEW 01
- A-201 3D VIEW 02
- A-202 3D VIEW 03
- A-203 3D RENDERS
- A-204 3D RENDERS
- A-205 3D RENDERS
  
- A-250 SECTION 01
- A-251 SECTION 02

**OVERALL FLOOR AREA:**  
 Basement: 455 m<sup>2</sup>  
 Ground Level: 455 m<sup>2</sup>  
 Level 01: 455 m<sup>2</sup>  
 Levels 02-06: 1,645 m<sup>2</sup>  
 Level 07: 251 m<sup>2</sup>

**ADDITIONAL HOTEL ROOM FLOOR AREA CALCULATIONS:**  
 Level 01 additional area: 114m<sup>2</sup> above existing car garage  
 Levels 02-06 area: 282m<sup>2</sup> per level, 1410m<sup>2</sup> overall  
 Level 07: 216 m<sup>2</sup>

**OVERALL ADDITIONAL AREA:** 1740 m<sup>2</sup>



## IPG Corporation Limited

Level 03  
 185 Hobson Street  
 Auckland CBD  
 Auckland 1010

P.O Box 90535,  
 Victoria Street West  
 Auckland 1142

## Consultants

DPA ARCHITECTS  
 Heritage Consultant

SPENCER HOLMES LIMITED  
 Planning Consultant

SILICON ENGINEERING CONSULTANT LTD  
 Engineering Consultant

## Project Title

Adelaide Road Hotel

114 Adelaide Road  
 Newtown, Wellington  
 6021, NZ

## Notes

## Revisions

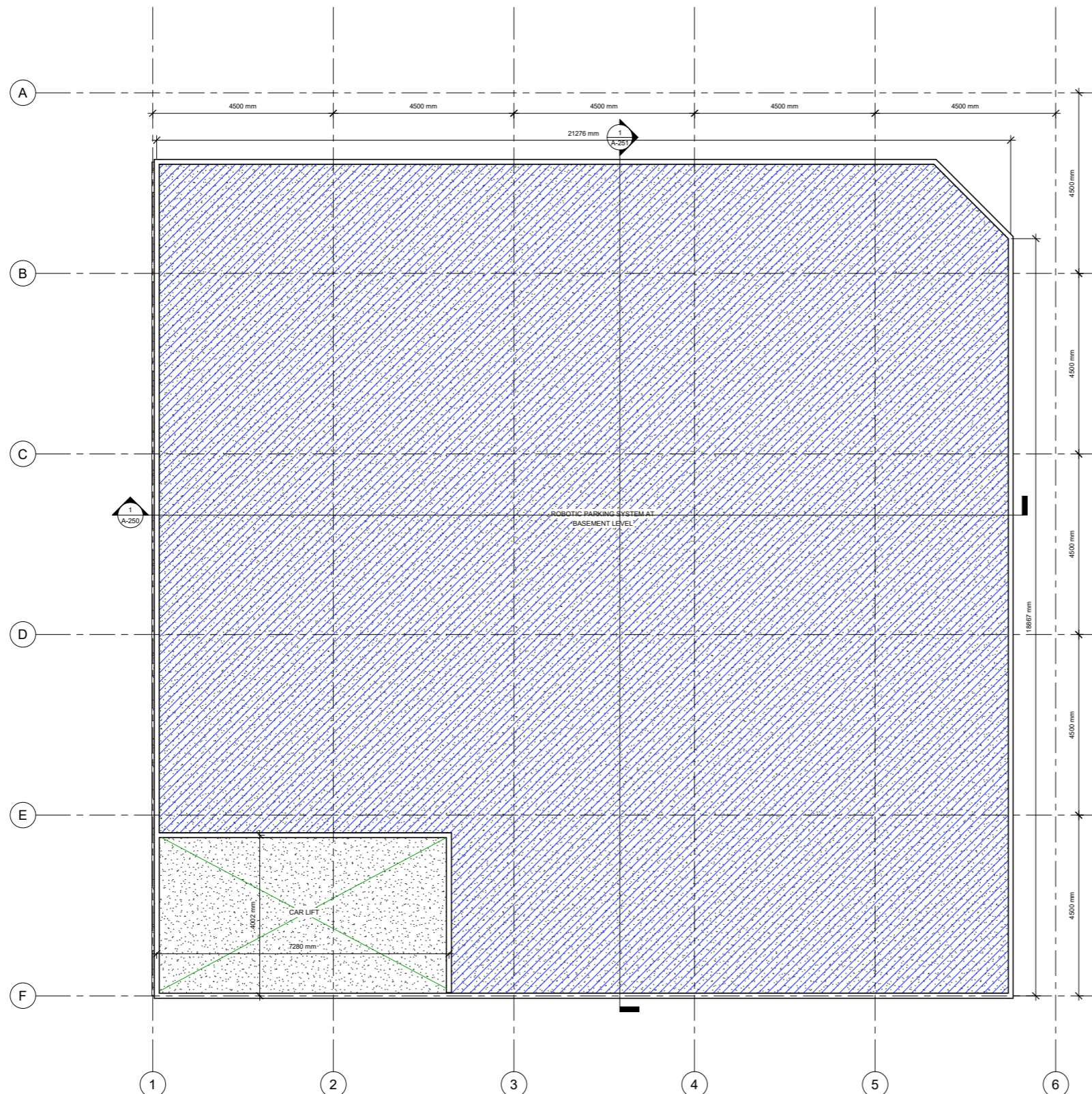
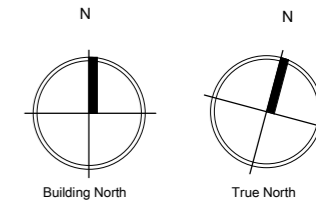
No.	Description	Date
1	ISSUED FOR RESOURCE CONSENT	22.04.21



## ADELAIDE PROJECT COVER SHEET

Project Number	101
Date	22 April 2021
Drawn By	Author
Drawing No	Revision
A-000	(1)
Scale	





**IPG Corporation Limited**

Level 03  
185 Hobson Street  
Auckland CBD  
Auckland 1010

P.O Box 90535,  
Victoria Street West  
Auckland 1142

**Consultants**

DPA ARCHITECTS  
Heritage Consultant

SPENCER HOLMES LIMITED  
Planning Consultant

SILICON ENGINEERING CONSULTANT LTD  
Engineering Consultant

**Project Title**

**Adelaide Road Hotel**

114 Adelaide Road  
Newtown, Wellington  
6021, NZ

**Notes**

**Revisions**

No.	Description	Date
1	ISSUED FOR RESOURCE CONSENT	22.04.21



**ADELAIDE PROJECT**  
**BASEMENT LEVEL**

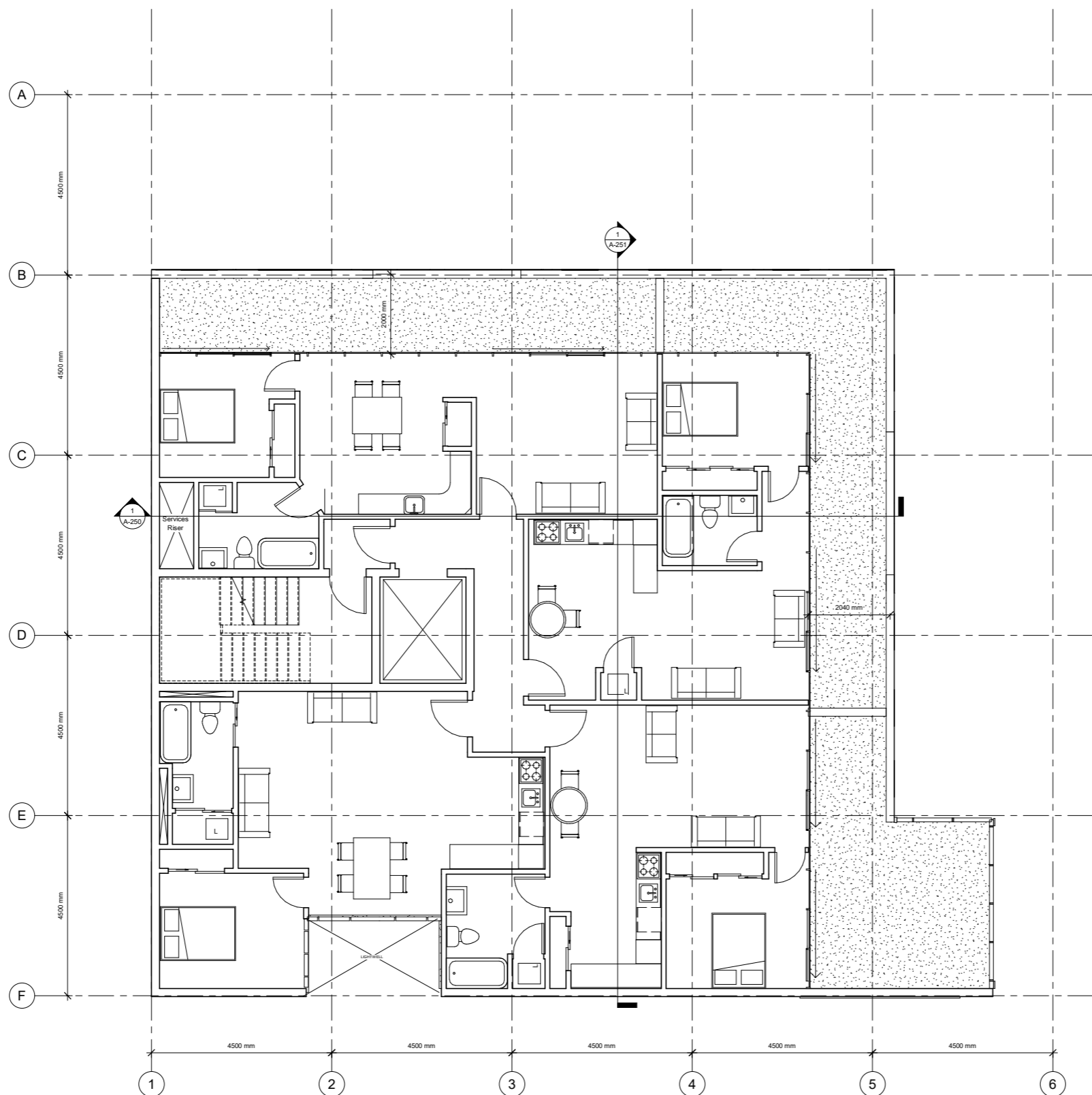
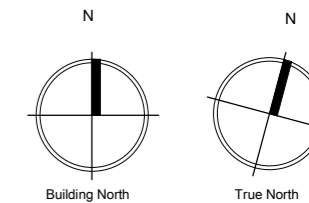
Project Number	101
Date	22 April 2021
Drawn By	Author
<b>Drawing No</b>	<b>Revision</b>
A-100	(1)
Scale	1 : 50

22/04/2021 3:50:50 pm









**IPG Corporation Limited**

Level 03  
185 Hobson Street  
Auckland CBD  
Auckland 1010

P.O Box 90535,  
Victoria Street West  
Auckland 1142

**Consultants**

DPA ARCHITECTS  
Heritage Consultant

SPENCER HOLMES LIMITED  
Planning Consultant

SILICON ENGINEERING CONSULTANT LTD  
Engineering Consultant

**Project Title**

**Adelaide Road Hotel**

114 Adelaide Road  
Newtown, Wellington  
6021, NZ

**Notes**

**Revisions**

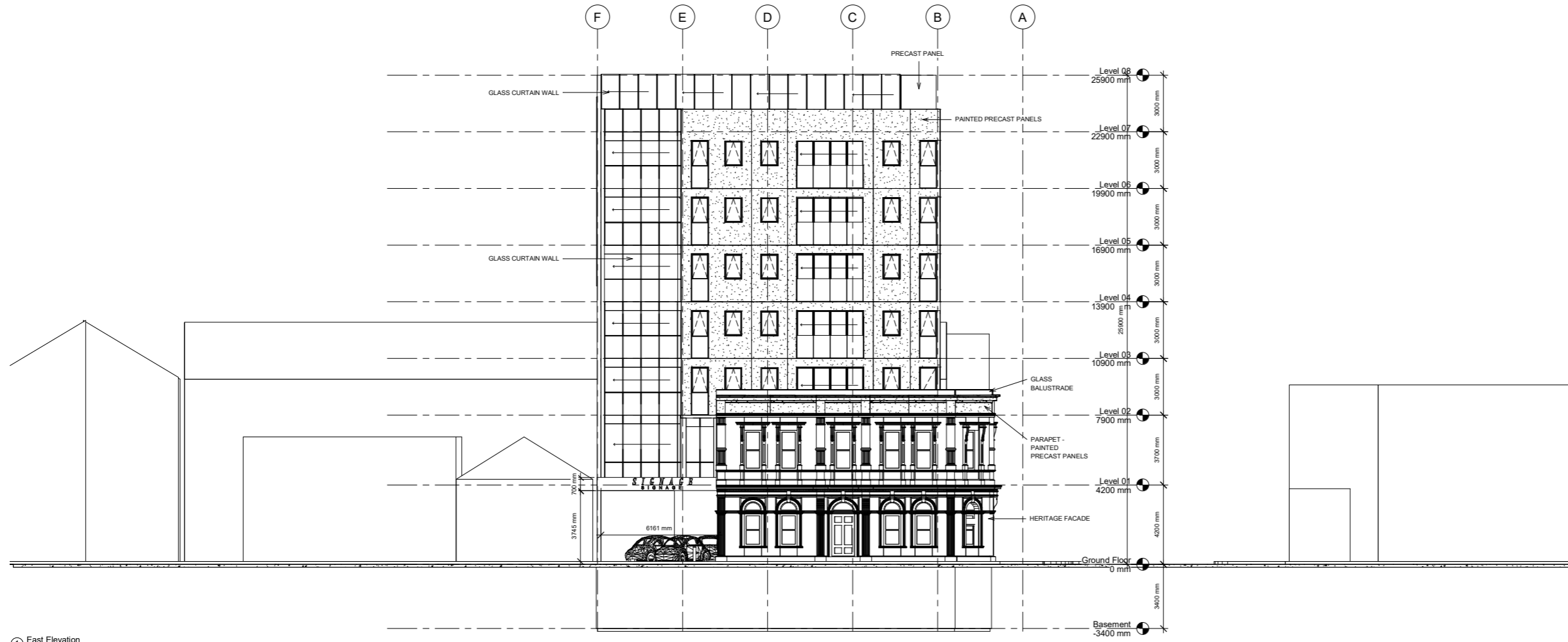
No.	Description	Date
1	ISSUED FOR RESOURCE CONSENT	22.04.21



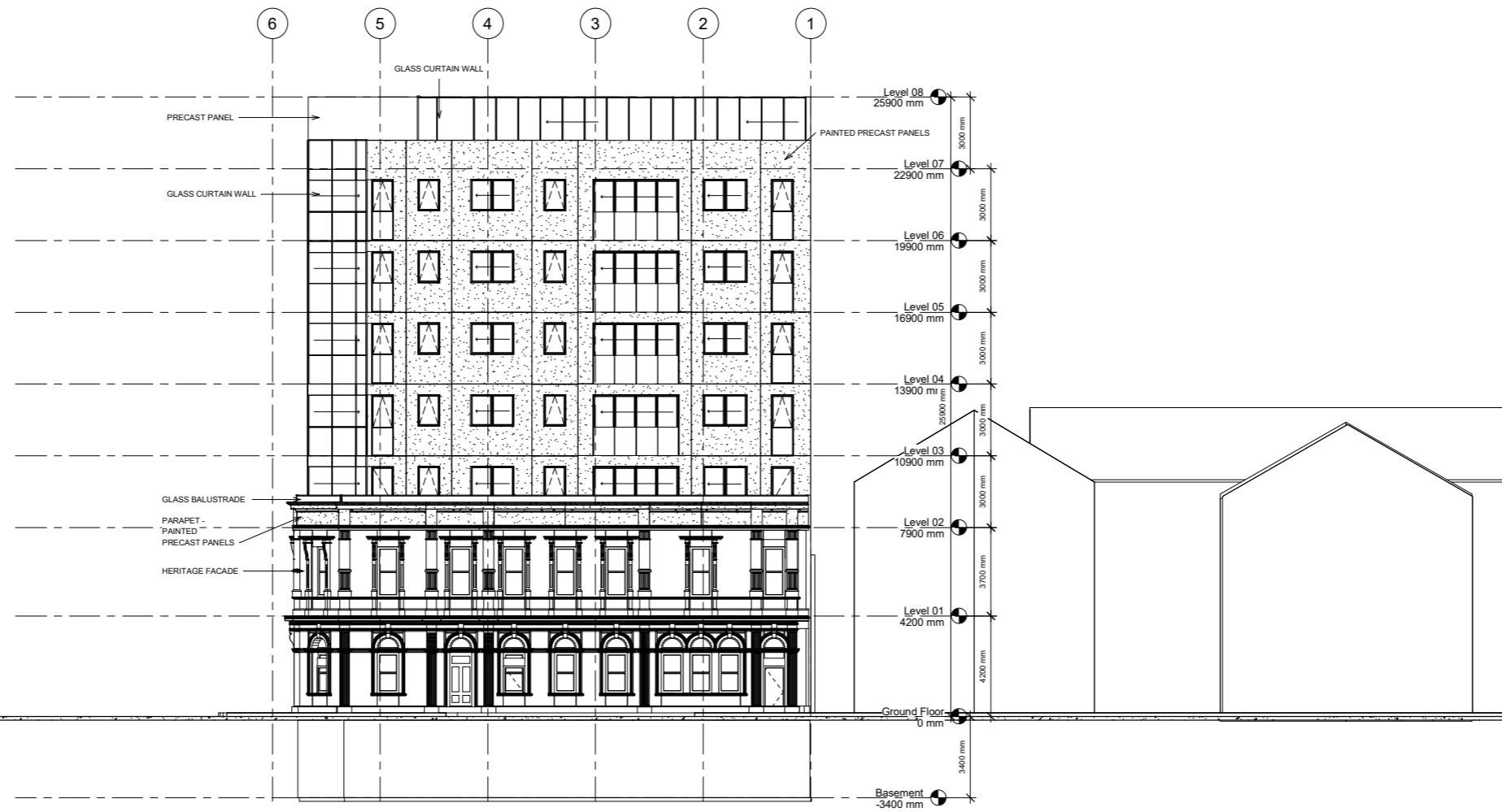
**ADELAIDE PROJECT**  
**LEVEL 07**

Project Number	101
Date	22 April 2021
Drawn By	Author
<b>Drawing No</b>	<b>Revision</b>
<b>A-104</b>	<b>(1)</b>
Scale	1 : 50

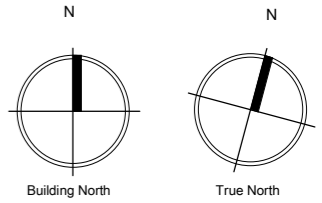
22/04/2021 3:54:28 pm



① East Elevation  
1 : 100



② North Elevation  
1 : 100



**IPG Corporation Limited**

Level 03  
185 Hobson Street  
Auckland CBD  
Auckland 1010

P.O Box 90535,  
Victoria Street West  
Auckland 1142

**Consultants**

DPA ARCHITECTS  
Heritage Consultant

SPENCER HOLMES LIMITED  
Planning Consultant

SILICON ENGINEERING CONSULTANT LTD  
Engineering Consultant

**Project Title**

**Adelaide Road Hotel**

114 Adelaide Road  
Newtown, Wellington  
6021, NZ

**Notes**

**Revisions**

No.	Description	Date
1	ISSUED FOR RESOURCE CONSENT	22.04.21

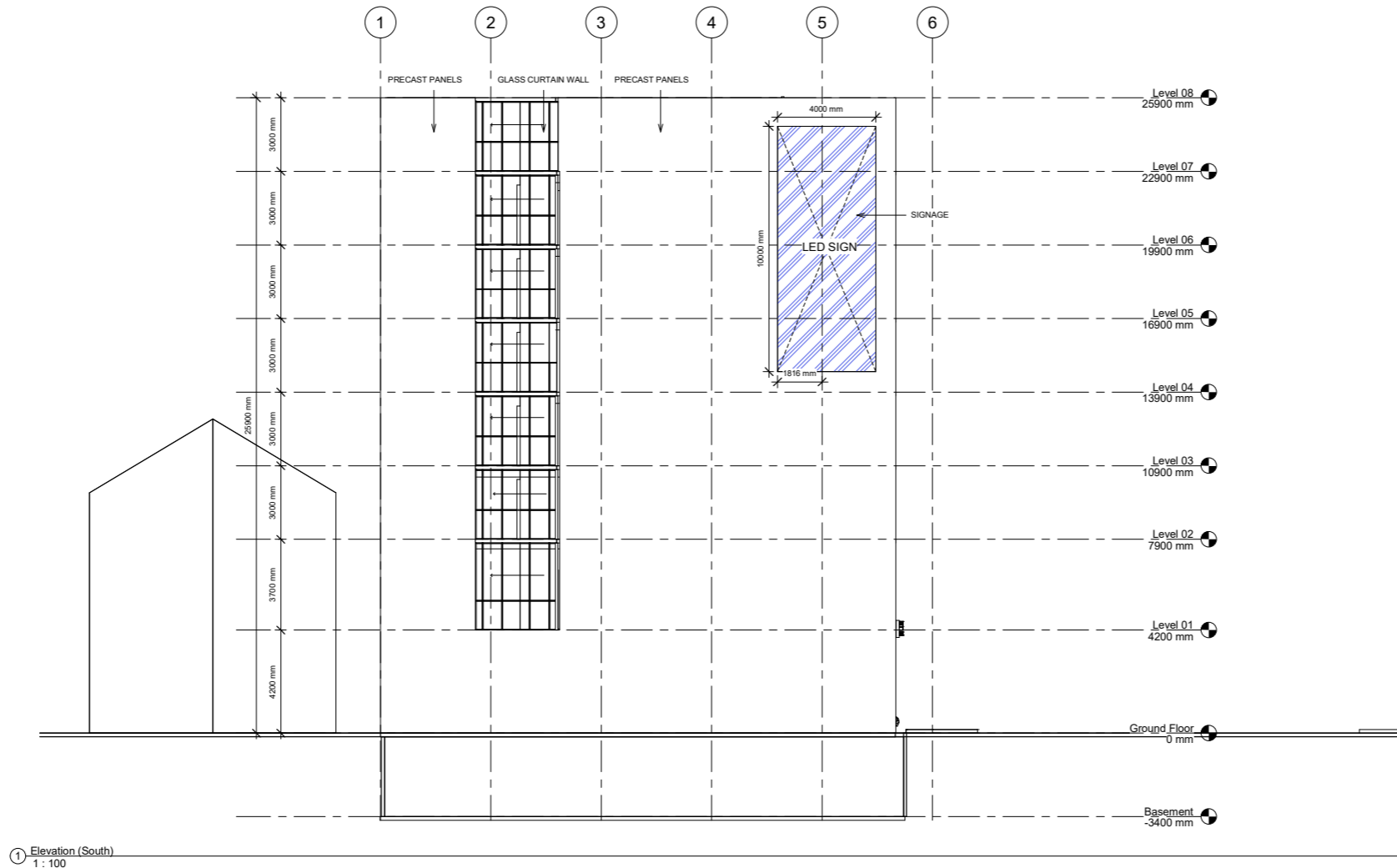


**ADELAIDE PROJECT  
NORTH & EAST ELEVATION**

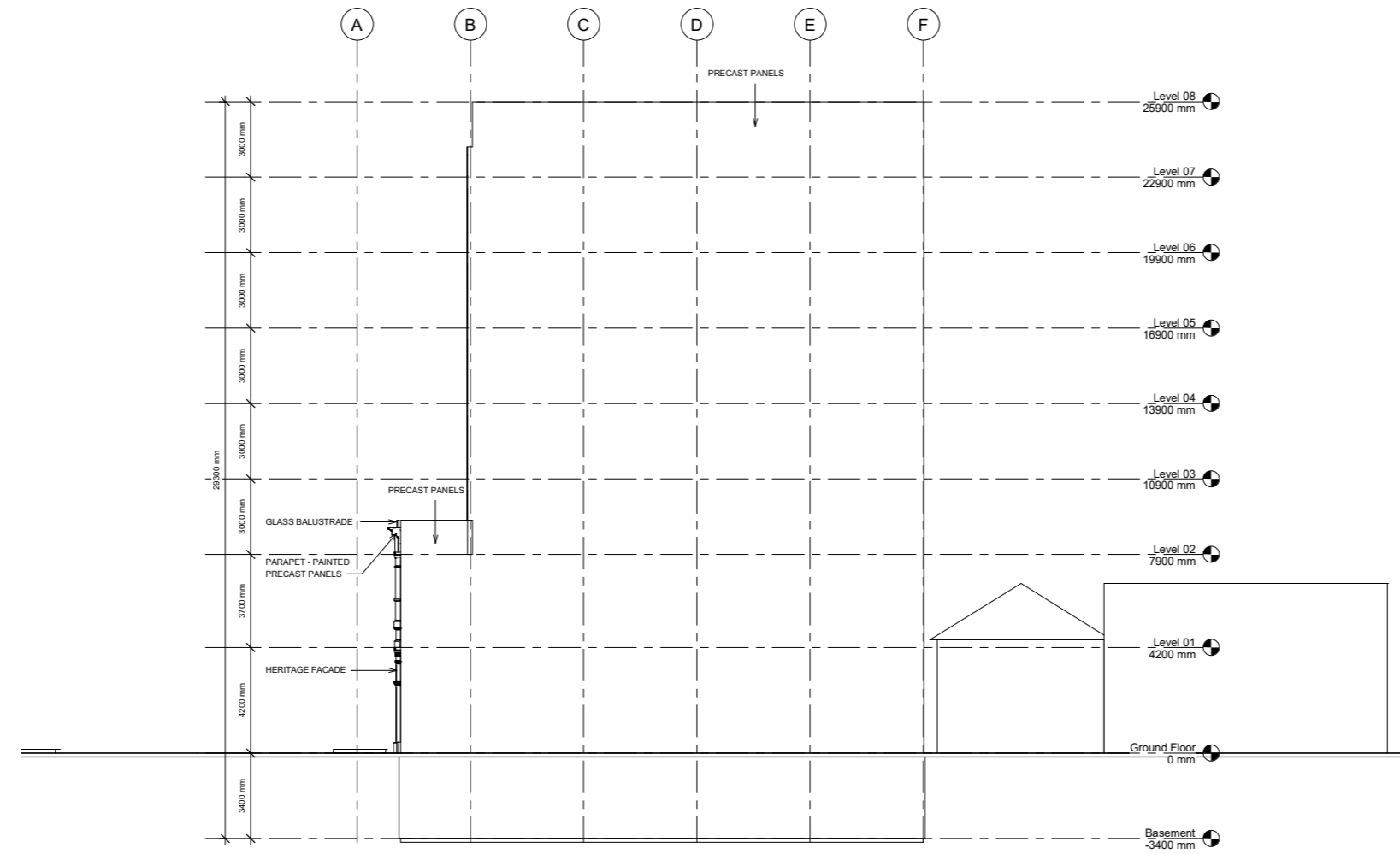
Project Number 101  
Date 22 April 2021  
Drawn By H.Erlam

Drawing No A-105  
Revision (1)  
Scale 1 : 100

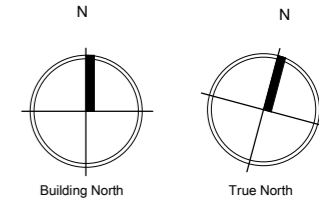
22/04/2021 11:51 pm



① Elevation (South)  
1 : 100



② Elevation (west)  
1 : 100



**IPG Corporation Limited**

Level 03  
185 Hobson Street  
Auckland CBD  
Auckland 1010  
  
P.O Box 90535,  
Victoria Street West  
Auckland 1142

**Consultants**

- DPA ARCHITECTS  
Heritage Consultant
- SPENCER HOLMES LIMITED  
Planning Consultant
- SILICON ENGINEERING CONSULTANT LTD  
Engineering Consultant

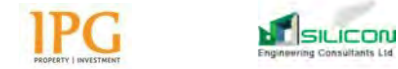
**Project Title**

**Adelaide Road Hotel**  
  
114 Adelaide Road  
Newtown, Wellington  
6021, NZ

**Notes**

**Revisions**

No.	Description	Date
1	ISSUED FOR RESOURCE CONSENT	22.04.21



**ADELAIDE PROJECT**

**SOUTH & WEST ELEVATIONS**

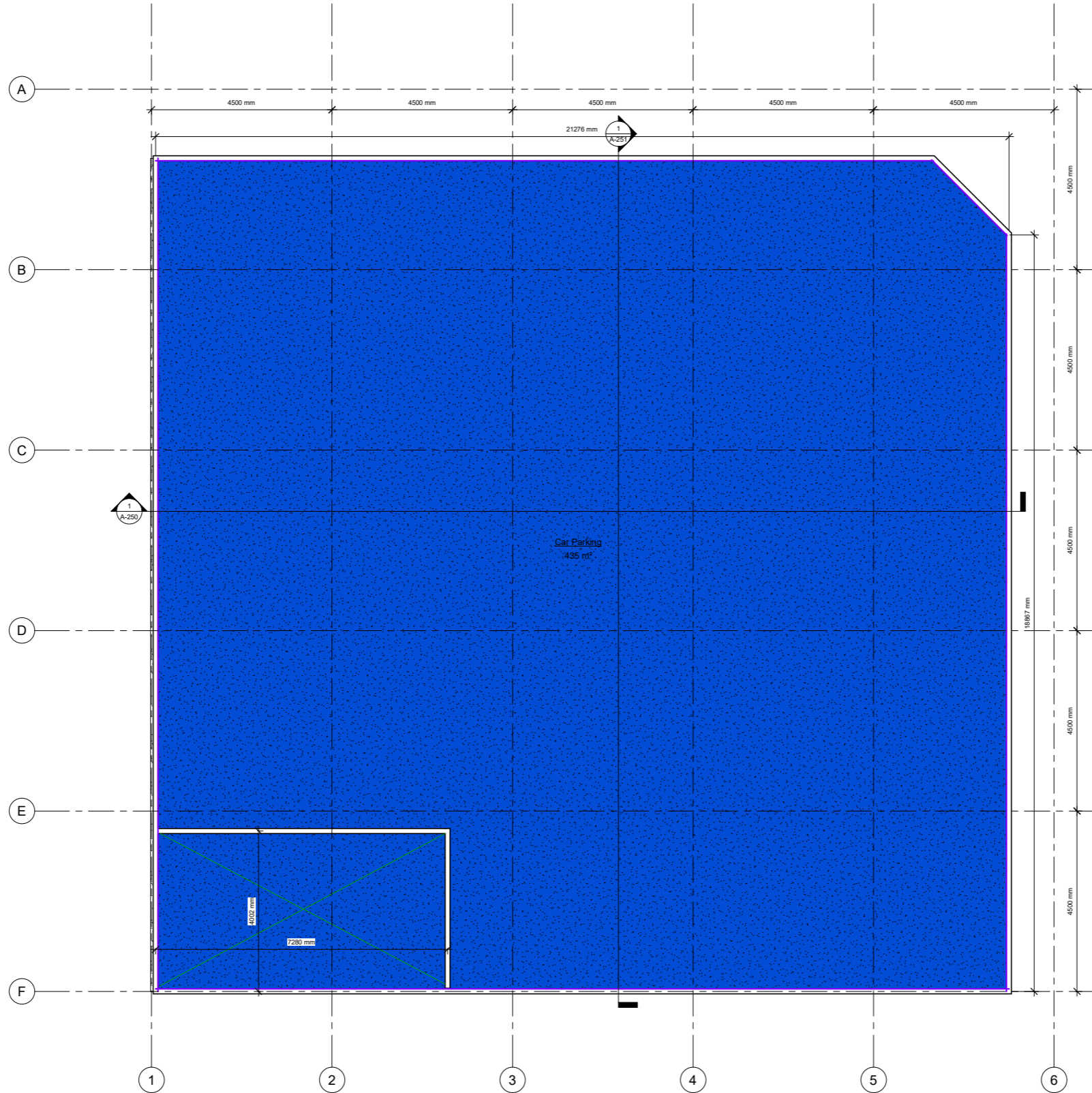
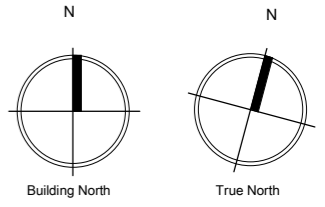
Project Number	101
Date	22 April 2021
Drawn By	Author

<b>Drawing No</b>	<b>Revision</b>
A-106	<b>(1)</b>
Scale	1 : 100



Area Legend

■ Car Parking



**IPG Corporation Limited**

Level 03  
185 Hobson Street  
Auckland CBD  
Auckland 1010

P.O Box 90535,  
Victoria Street West  
Auckland 1142

**Consultants**

DPA ARCHITECTS  
Heritage Consultant

SPENCER HOLMES LIMITED  
Planning Consultant

SILICON ENGINEERING CONSULTANT LTD  
Engineering Consultant

**Project Title**

**Adelaide Road Hotel**

114 Adelaide Road  
Newtown, Wellington  
6021, NZ

**Notes**

**Revisions**

No.	Description	Date
1	ISSUED FOR RESOURCE CONSENT	22.04.21



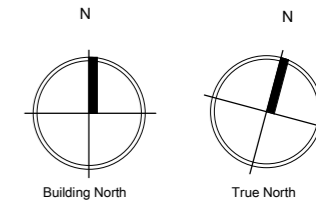
**ADELAIDE PROJECT  
BASEMENT AREA PLAN**

Project Number	101
Date	22 April 2021
Drawn By	Author
<b>Drawing No</b>	<b>Revision</b>
<b>A-150</b>	<b>(1)</b>
Scale	1 : 50

22/04/2021 4:31:49 pm

**Area Legend**

- Car Parking
- Common Area
- Retail Area / Kitchen



**IPG Corporation Limited**

Level 03  
185 Hobson Street  
Auckland CBD  
Auckland 1010

P.O Box 90535,  
Victoria Street West  
Auckland 1142

**Consultants**

DPA ARCHITECTS  
Heritage Consultant

SPENCER HOLMES LIMITED  
Planning Consultant

SILICON ENGINEERING CONSULTANT LTD  
Engineering Consultant

**Project Title**

**Adelaide Road Hotel**

114 Adelaide Road  
Newtown, Wellington  
6021, NZ

**Notes**

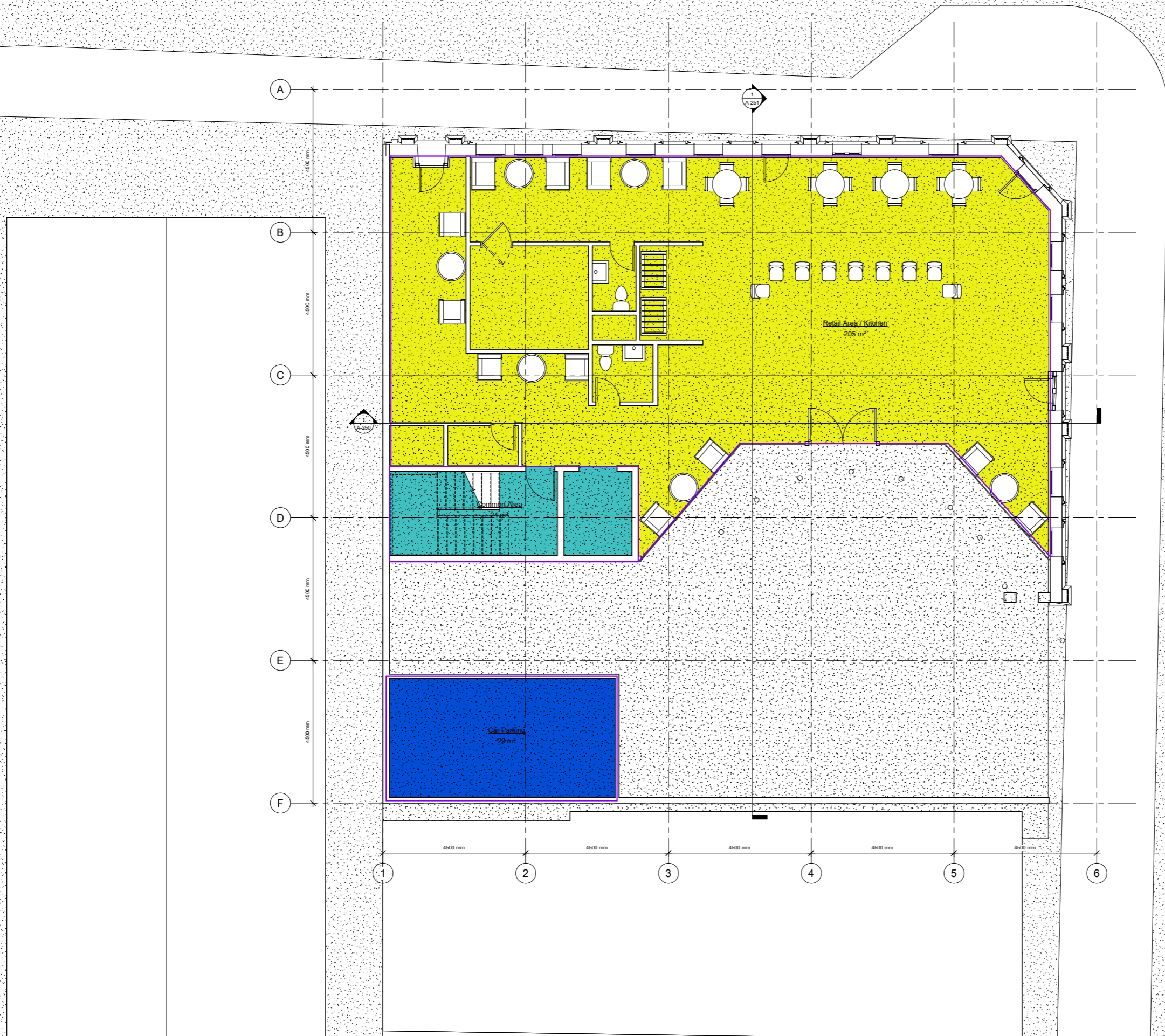
**Revisions**

No.	Description	Date
1	ISSUED FOR RESOURCE CONSENT	22.04.21



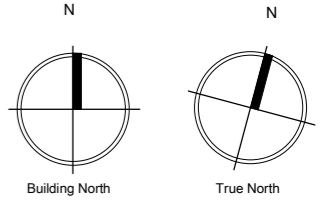
**ADELAIDE PROJECT  
GROUND FLOOR AREA  
PLAN**

Project Number	101
Date	22 April 2021
Drawn By	Author
<b>Drawing No</b>	<b>Revision</b>
A-151	(1)
Scale	1 : 50



Area Legend

- Common Areas
- Existing FA
- Hotel Rooms



**IPG Corporation Limited**

Level 03  
185 Hobson Street  
Auckland CBD  
Auckland 1010  
  
P.O Box 90535,  
Victoria Street West  
Auckland 1142

**Consultants**

DPA ARCHITECTS  
Heritage Consultant  
  
SPENCER HOLMES LIMITED  
Planning Consultant  
  
SILICON ENGINEERING CONSULTANT LTD  
Engineering Consultant

**Project Title**

**Adelaide Road Hotel**  
  
114 Adelaide Road  
Newtown, Wellington  
6021, NZ

**Notes**

**Revisions**

No.	Description	Date
1	ISSUED FOR RESOURCE CONSENT	22.04.21



**ADELAIDE PROJECT**  
**LEVEL 01 AREA PLAN**

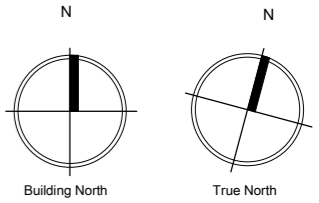
Project Number	101
Date	22 April 2021
Drawn By	Author
<b>Drawing No</b>	<b>Revision</b>
<b>A-152</b>	(1)
Scale	1 : 50



22/04/2021 14:34:23 pm

**Area Legend**

- Common Areas
- Hotel Rooms



**IPG Corporation Limited**

Level 03  
 185 Hobson Street  
 Auckland CBD  
 Auckland 1010

P.O Box 90535,  
 Victoria Street West  
 Auckland 1142

**Consultants**

DPA ARCHITECTS  
 Heritage Consultant

SPENCER HOLMES LIMITED  
 Planning Consultant

SILICON ENGINEERING CONSULTANT LTD  
 Engineering Consultant

**Project Title**

**Adelaide Road Hotel**

114 Adelaide Road  
 Newtown, Wellington  
 6021, NZ

**Notes**

**Revisions**

No.	Description	Date
1	ISSUED FOR RESOURCE CONSENT	22.04.21



**ADELAIDE PROJECT**  
**LEVELS 02-06 AREA PLAN**

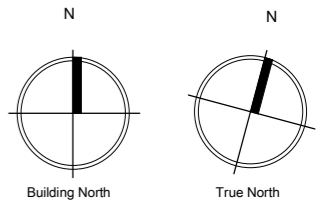
Project Number	101
Date	22 April 2021
Drawn By	Author

<b>Drawing No</b>	<b>Revision</b>
<b>A-153</b>	<b>(1)</b>
Scale	1 : 50



**Area Legend**

- Common Areas
- Hotel Rooms



**IPG Corporation Limited**

Level 03  
185 Hobson Street  
Auckland CBD  
Auckland 1010

P.O. Box 90535,  
Victoria Street West  
Auckland 1142

**Consultants**

DPA ARCHITECTS  
Heritage Consultant

SPENCER HOLMES LIMITED  
Planning Consultant

SILICON ENGINEERING CONSULTANT LTD  
Engineering Consultant

**Project Title**

**Adelaide Road Hotel**

114 Adelaide Road  
Newtown, Wellington  
6021, NZ

**Notes**

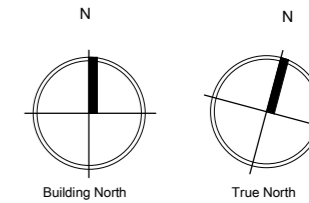
**Revisions**

No.	Description	Date
1	ISSUED FOR RESOURCE CONSENT	22.04.21



**ADELAIDE PROJECT  
LEVEL 07 AREA PLAN**

Project Number	101
Date	22 April 2021
Drawn By	Author
<b>Drawing No</b>	<b>Revision</b>
A-154	(1)
Scale	1 : 50



**IPG Corporation Limited**

Level 03  
 185 Hobson Street  
 Auckland CBD  
 Auckland 1010

P.O Box 90535,  
 Victoria Street West  
 Auckland 1142

**Consultants**

DPA ARCHITECTS  
 Heritage Consultant

SPENCER HOLMES LIMITED  
 Planning Consultant

SILICON ENGINEERING CONSULTANT LTD  
 Engineering Consultant

**Project Title**

**Adelaide Road Hotel**

114 Adelaide Road  
 Newtown, Wellington  
 6021, NZ

**Notes**

**Revisions**

No.	Description	Date
1	ISSUED FOR RESOURCE CONSENT	22.04.21



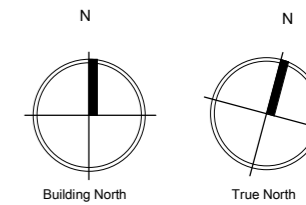
**ADELAIDE PROJECT**  
**3D VIEW 01**

Project Number 101  
 Date 22 April 2021  
 Drawn By Author

**Drawing No** **Revision**

**A-200** **(1)**

Scale



**IPG Corporation Limited**

Level 03  
185 Hobson Street  
Auckland CBD  
Auckland 1010

P.O. Box 90535,  
Victoria Street West  
Auckland 1142

**Consultants**

DPA ARCHITECTS  
Heritage Consultant

SPENCER HOLMES LIMITED  
Planning Consultant

SILICON ENGINEERING CONSULTANT LTD  
Engineering Consultant

**Project Title**

**Adelaide Road Hotel**

114 Adelaide Road  
Newtown, Wellington  
6021, NZ

**Notes**

**Revisions**

No.	Description	Date
1	ISSUED FOR RESOURCE CONSENT	22.04.21



**ADELAIDE PROJECT**  
**3D VIEW 02**

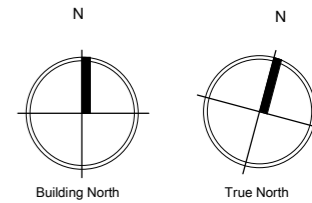
Project Number 101  
Date 22 April 2021  
Drawn By Author

**Drawing No** **Revision**

**A-201** **(1)**

Scale





**IPG Corporation Limited**

Level 03  
185 Hobson Street  
Auckland CBD  
Auckland 1010

P.O Box 90535,  
Victoria Street West  
Auckland 1142

**Consultants**

DPA ARCHITECTS  
Heritage Consultant

SPENCER HOLMES LIMITED  
Planning Consultant

SILICON ENGINEERING CONSULTANT LTD  
Engineering Consultant

**Project Title**

**Adelaide Road Hotel**

114 Adelaide Road  
Newtown, Wellington  
6021, NZ

**Notes**

**Revisions**

No.	Description	Date
1	ISSUED FOR RESOURCE CONSENT	22.04.21

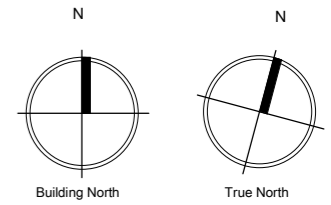


**ADELAIDE PROJECT**  
**3D VIEW 03**

Project Number 101  
Date 22 April 2021  
Drawn By Author

Drawing No **A-202** Revision **(1)**  
Scale





**IPG Corporation Limited**

Level 03  
 185 Hobson Street  
 Auckland CBD  
 Auckland 1010

P.O Box 90535,  
 Victoria Street West  
 Auckland 1142

**Consultants**

DPA ARCHITECTS  
 Heritage Consultant

SPENCER HOLMES LIMITED  
 Planning Consultant

SILICON ENGINEERING CONSULTANT LTD  
 Engineering Consultant

**Project Title**

**Adelaide Road Hotel**

114 Adelaide Road  
 Newtown, Wellington  
 6021, NZ

**Notes**

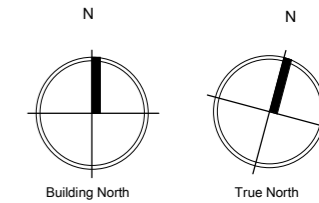
**Revisions**

No.	Description	Date
1	ISSUED FOR RESOURCE CONSENT	22.04.21



**ADELAIDE PROJECT**  
**3D RENDERS**

Project Number	101
Date	22 April 2021
Drawn By	Author
<b>Drawing No</b>	<b>Revision</b>
A-203	(1)
Scale	



**IPG Corporation Limited**

Level 03  
185 Hobson Street  
Auckland CBD  
Auckland 1010

P.O. Box 90535,  
Victoria Street West  
Auckland 1142

**Consultants**

DPA ARCHITECTS  
Heritage Consultant

SPENCER HOLMES LIMITED  
Planning Consultant

SILICON ENGINEERING CONSULTANT LTD  
Engineering Consultant

**Project Title**

**Adelaide Road Hotel**

114 Adelaide Road  
Newtown, Wellington  
6021, NZ

**Notes**

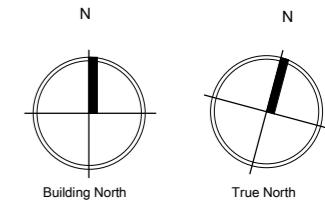
**Revisions**

No.	Description	Date
1	ISSUED FOR RESOURCE CONSENT	22.04.21



**ADELAIDE PROJECT**  
**3D RENDERS**

Project Number	101
Date	22 April 2021
Drawn By	Author
<b>Drawing No</b>	<b>Revision</b>
A-204	(1)
Scale	



### IPG Corporation Limited

Level 03  
185 Hobson Street  
Auckland CBD  
Auckland 1010

P.O. Box 90535,  
Victoria Street West  
Auckland 1142

### Consultants

DPA ARCHITECTS  
Heritage Consultant

SPENCER HOLMES LIMITED  
Planning Consultant

SILICON ENGINEERING CONSULTANT LTD  
Engineering Consultant

### Project Title

#### Adelaide Road Hotel

114 Adelaide Road  
Newtown, Wellington  
6021, NZ

### Notes

### Revisions

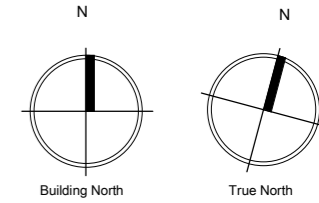
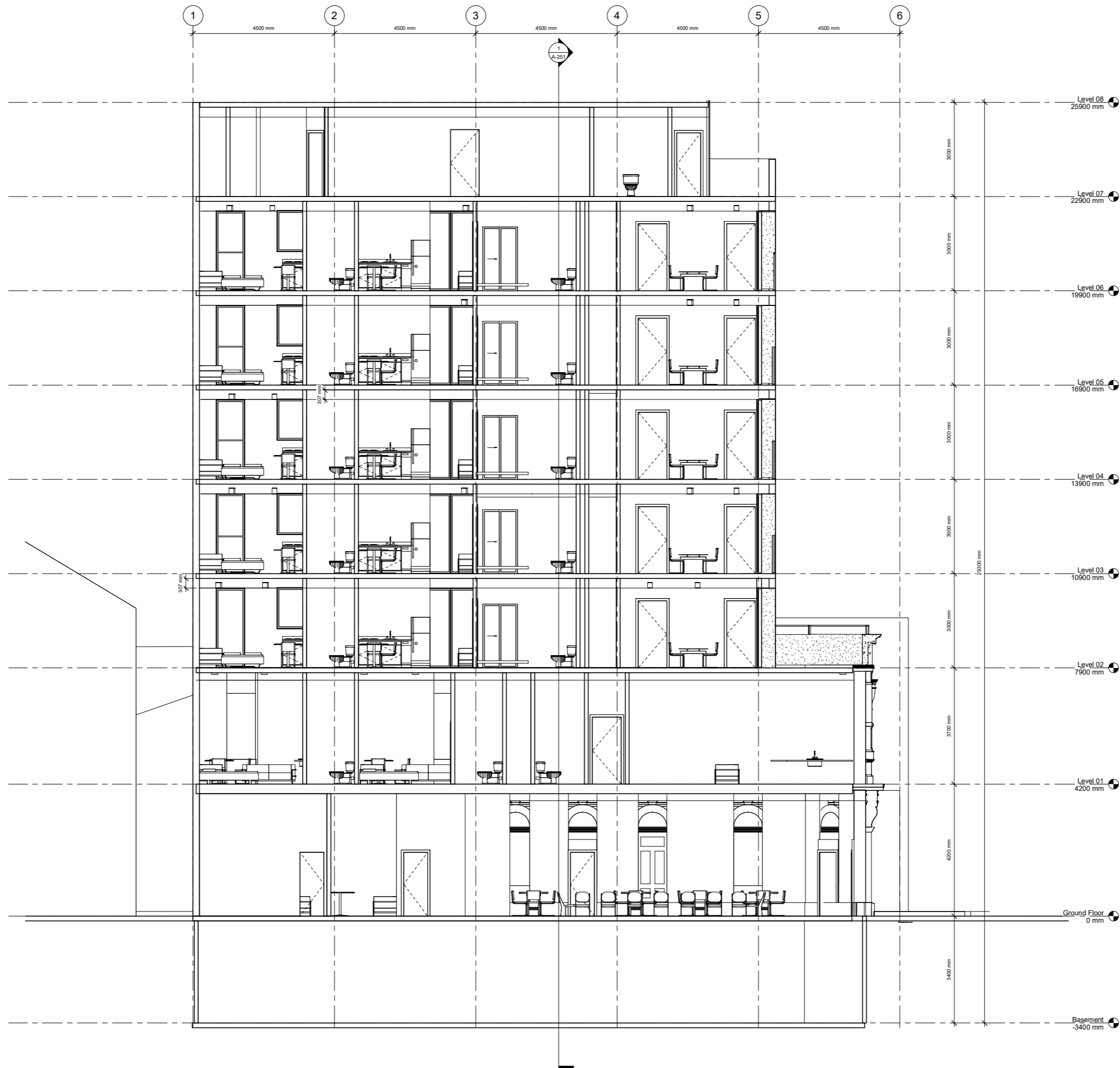
No.	Description	Date
1	ISSUED FOR RESOURCE CONSENT	22.04.21



## ADELAIDE PROJECT 3D RENDERS

Project Number	101
Date	22 April 2021
Drawn By	Author
Drawing No	Revision
A-205	(1)
Scale	

22/04/2021 4:43:07 pm



**IPG Corporation Limited**

Level 03  
 185 Hobson Street  
 Auckland CBD  
 Auckland 1010

P.O. Box 90535,  
 Victoria Street West  
 Auckland 1142

**Consultants**

DPA ARCHITECTS  
 Heritage Consultant

SPENCER HOLMES LIMITED  
 Planning Consultant

SILICON ENGINEERING CONSULTANT LTD  
 Engineering Consultant

**Project Title**

**Adelaide Road Hotel**

114 Adelaide Road  
 Newtown, Wellington  
 6021, NZ

**Notes**

**Revisions**

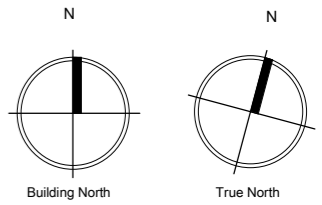
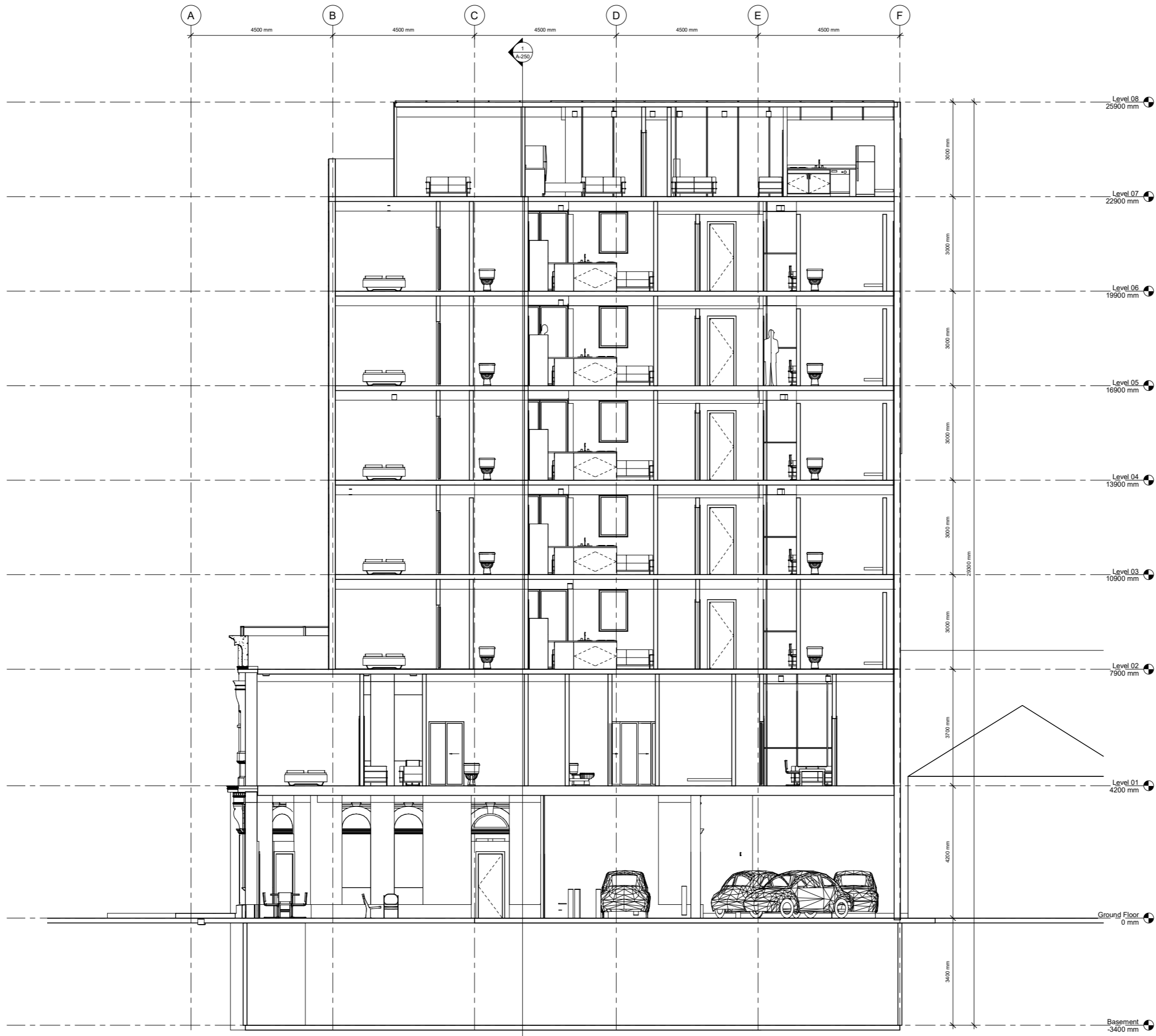
No.	Description	Date
1	ISSUED FOR RESOURCE CONSENT	22.04.21



**ADELAIDE PROJECT**

**SECTION 01**

Project Number	101
Date	22 April 2021
Drawn By	Author
<b>Drawing No</b>	<b>Revision</b>
<b>A-250</b>	<b>(1)</b>
Scale	1 : 50



**IPG Corporation Limited**

Level 03  
185 Hobson Street  
Auckland CBD  
Auckland 1010

P.O Box 90535,  
Victoria Street West  
Auckland 1142

**Consultants**

DPA ARCHITECTS  
Heritage Consultant

SPENCER HOLMES LIMITED  
Planning Consultant

SILICON ENGINEERING CONSULTANT LTD  
Engineering Consultant

**Project Title**

**Adelaide Road Hotel**

114 Adelaide Road  
Newtown, Wellington  
6021, NZ

**Notes**

**Revisions**

No.	Description	Date
1	ISSUED FOR RESOURCE CONSENT	22.04.21



**ADELAIDE PROJECT**  
**SECTION 02**

Project Number	101
Date	22 April 2021
Drawn By	Author
<b>Drawing No</b>	<b>Revision</b>
A-251	(1)
Scale	1 : 50

22/04/2021 1:37:10 pm