



Aerial perspective of the proposed Frank Kitts Park and the Garden of Benevolence

Illustration by www.stantialstudio.co.nz ©

by Wraight + Associates Ltd. - Landscape
Athfield Architects - Architecture
Duncan Campbell - Chinese Garden Consultant
for City Shaper
Wellington Chinese Garden Society

Dunning Thornton Consultants Limited - Structural
Aurecon - Civil, Services + Environmental
eCubed- Lighting

RESOURCE CONSENT
11th April 2016

REV	DATE	ISSUE
A	RC CLIENT REVIEW	04.02.2016
B	RESOURCE CONSENT	11.04.2016

LA RC 4-00
Frank Kitts Park





Heaven's well (天井) entry, with framed view across the waterfall into the garden beyond.

Illustration by www.stantiallstudio.co.nz ©



Heaven's well (天井) looking towards the interpretive text of the Garden of Beneicence 惠園

Illustration by www.stantialstudio.co.nz ©



Heaven's well (天井) looking along the gallery for calming the waves (安瀾廊)

Illustration by www.stantialstudio.co.nz ©



Jervois Quay looking through the pai Lau and park entrance to the garden of beneficence 惠園

Illustration by www.stantialstudio.co.nz ©



Illustration by www.stantialstudio.co.nz ©

View from inside the chamber for retelling the past (述往室) looking through the gallery (安瀾廊) to the park and harbour beyond.

by
Wright + Associates Ltd. - Landscape
Athfield Architects - Architecture
Duncan Campbell - Chinese Garden Consultant
for
City Shaper
Wellington Chinese Garden Society

Dunning Thornton Consultants Limited - Structural
Aurecon - Civil, Services + Environmental
eCubed- Lighting

RESOURCE CONSENT
11th April 2016

REV	DATE	ISSUE
A	RC CLIENT REVIEW	04.02.2016
B	RESOURCE CONSENT	11.04.2016

LA RC 4-05
The chamber for retelling the past 01/02



Illustration by www.stantialstudio.co.nz ©

View from the chamber for retelling the past (述往昔) looking to the chamber for contemplating the future (思来堂)

by Wraight + Associates Ltd. - Landscape
Athfield Architects - Architecture
Duncan Campbell - Chinese Garden Consultant
for City Shaper
Wellington Chinese Garden Society

Dunning Thornton Consultants Limited - Structural
Aurecon - Civil, Services + Environmental
eCubed- Lighting

RESOURCE CONSENT
11th April 2016

REV	DATE
A	RC CLIENT REVIEW
B	RESOURCE CONSENT

ISSUE
04.02.2016
11.04.2016

LA RC 4-06
The chamber for retelling the past 02/02



figure 17
Looking through the screen from the gallery of calming the waves (安瀾廊) through the chamber for contemplating the future (思來室) towards the pavilion

Illustration by www.stantialstudio.co.nz ©



Illustration by www.stantialstudio.co.nz ©

Gallery for calming the waves (安瀾廊) looking to Wellington harbour.



Illustration by www.stantialstudio.co.nz ©

Harbour viewing gardens adjacent to the gallery for calming the waves (安瀾廊) looking back across the gardens to Wellington city.

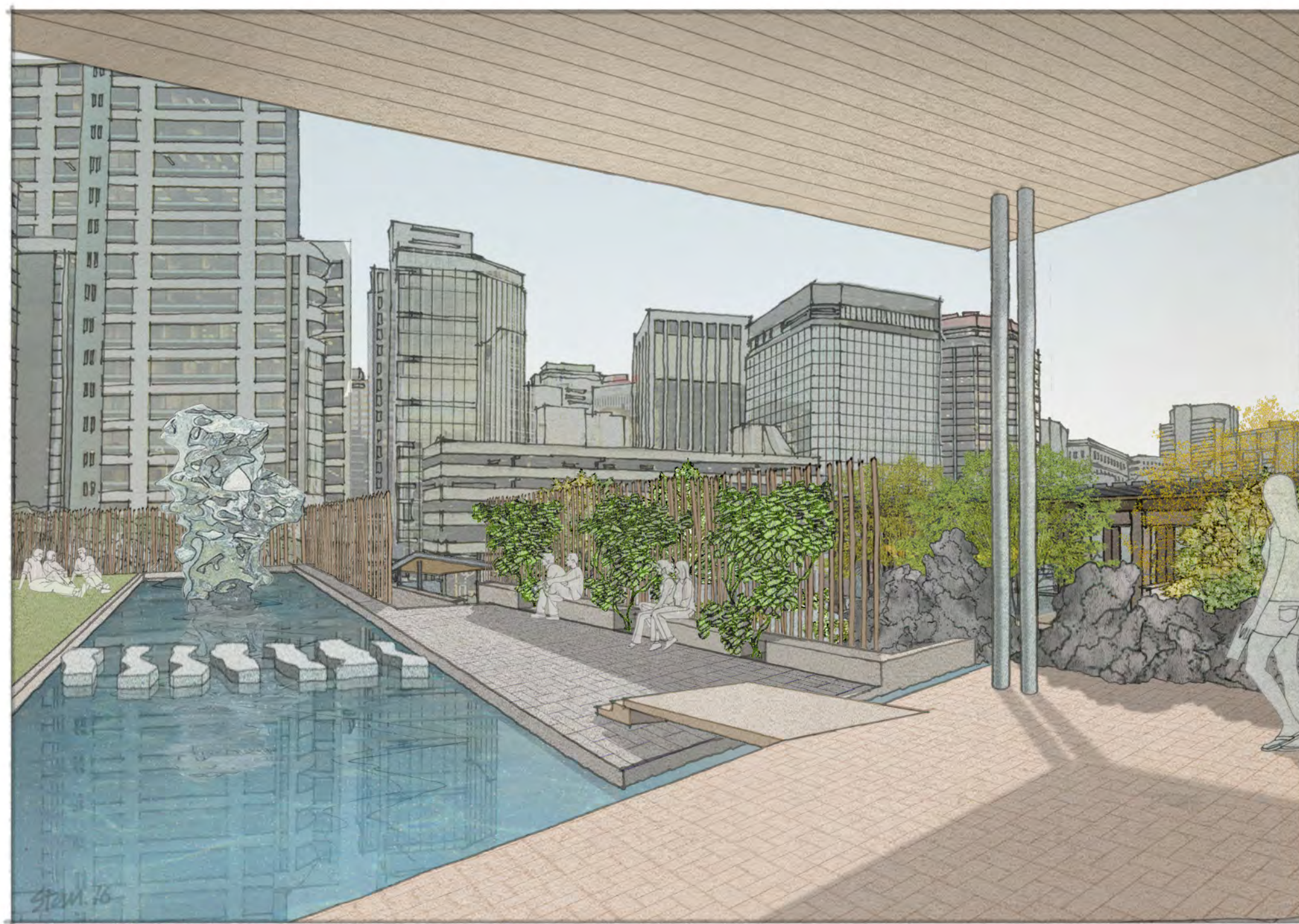


Illustration by www.stantialstudio.co.nz ©

View across the pavilion looking towards the pool of still waters (止水池), pool terrace and the garden towards the city.



Illustration by www.stantiallstudio.co.nz ©

View across the city Lawn of Frank Kitts Park towards the pool of still waters (止水池), pavilion and garden



by
Wraight + Associates Ltd. - Landscape
Athfield Architects - Architecture
Duncan Campbell - Chinese Garden Consultant
for
City Shaper
Wellington Chinese Garden Society

Dunning Thornton Consultants Limited - Structural
Aurecon - Civil, Services + Environmental
eCubed- Lighting

RESOURCE CONSENT
11th April 2016

REV	DATE	ISSUE
A	RC CLIENT REVIEW	04.02.2016
B	RESOURCE CONSENT	11.04.2016

LA RC 4-11
City lawn + upper terrace



Illustration by www.stantialstudio.co.nz ©

View towards the park from the northern end of the waterfront promenade.



by
Wraight + Associates Ltd. - Landscape
Athfield Architects - Architecture
Duncan Campbell - Chinese Garden Consultant
for
City Shaper
Wellington Chinese Garden Society

Dunning Thornton Consultants Limited - Structural
Aurecon - Civil, Services + Environmental
eCubed- Lighting

RESOURCE CONSENT
11th April 2016

REV	DATE	ISSUE
A	RC CLIENT REVIEW	04.02.2016
B	RESOURCE CONSENT	11.04.2016

LA RC 4-12
View towards the park from the north



Illustration by www.stantialstudio.co.nz ©

View across the park promenade to the coastal garden and harbour lawn.



View across the City Lawn of Frank Kitts Park towards the Pool of Still Waters and Garden
by Wraight + Associates Ltd. - Landscape
Athfield Architects - Architecture
Duncan Campbell - Chinese Garden Consultant
for City Shaper
Wellington Chinese Garden Society

,Pavilion
Dunning Thornton Consultants Limited - Structural
Aurecon - Civil, Services + Environmental
eCubed- Lighting

RESOURCE CONSENT
11th April 2016

REV	DATE	ISSUE
A	RC CLIENT REVIEW	04.02.2016
B	RESOURCE CONSENT	11.04.2016

LA RC 4-13
The harbour lawn + coastal gardens



Illustration by www.stantialstudio.co.nz ©

View across the pool of still waters (止水池) and city Lawn from the north.



by
Wraight + Associates Ltd. - Landscape
Athfield Architects - Architecture
Duncan Campbell - Chinese Garden Consultant
for
City Shaper
Wellington Chinese Garden Society

Dunning Thornton Consultants Limited - Structural
Aurecon - Civil, Services + Environmental
eCubed- Lighting

RESOURCE CONSENT
11th April 2016

REV	DATE	ISSUE
A	RC CLIENT REVIEW	04.02.2016
B	RESOURCE CONSENT	11.04.2016

LA RC 4-14
The city lawn



View of the park from the Taranaki street wharf bridge.

Illustration by www.stantialstudio.co.nz ©



by
Wraight + Associates Ltd. - Landscape
Athfield Architects - Architecture
Duncan Campbell - Chinese Garden Consultant
for
City Shaper
Wellington Chinese Garden Society

Dunning Thornton Consultants Limited - Structural
Aurecon - Civil, Services + Environmental
eCubed- Lighting

RESOURCE CONSENT
11th April 2016

REV	DATE	ISSUE
A	RC CLIENT REVIEW	04.02.2016
B	RESOURCE CONSENT	11.04.2016

LA RC 4-15
The park from the south



Aerial view of the children's playground.

Illustration by www.stantialstudio.co.nz ©



by Wraight + Associates Ltd. - Landscape
Athfield Architects - Architecture
Duncan Campbell - Chinese Garden Consultant
for City Shaper
Wellington Chinese Garden Society

Dunning Thornton Consultants Limited - Structural
Aurecon - Civil, Services + Environmental
eCubed- Lighting

RESOURCE CONSENT
11th April 2016

REV	DATE	ISSUE
A	RC CLIENT REVIEW	04.02.2016
B	RESOURCE CONSENT	11.04.2016

LA RC 4-16
Children's playground 01/02



View of the children's playground from the waterfront promenade.

Illustration by www.stantialstudio.co.nz ©



View of the children's playground from an internal path.