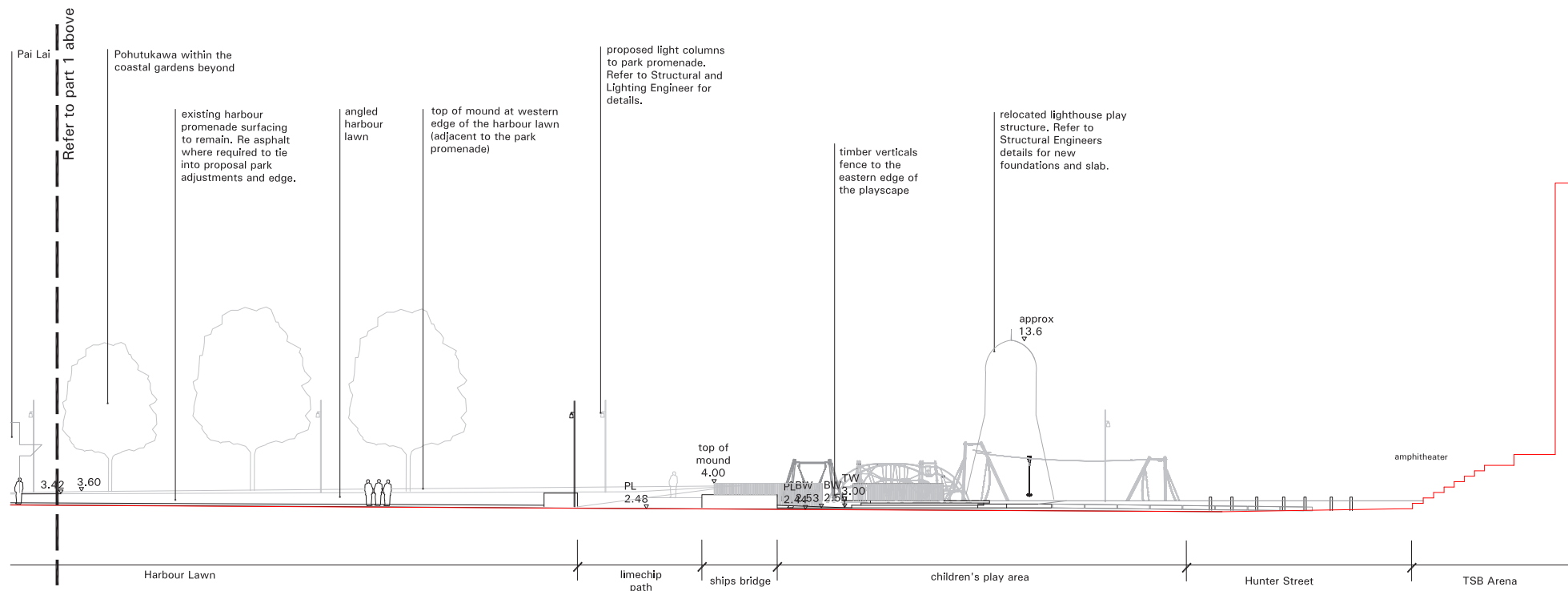


Proposed elevation A-A (part 1 of 2)

AA South-North from the Harbour looking west towards Frank Kitts Park

scale 1:200 @ A1, 1:400 @ A3



Proposed elevation A-A (part 2 of 2)

AA South-North from the Harbour looking west , towards Frank Kitts Park

scale 1:200 @ A1, 1:400 @ A3



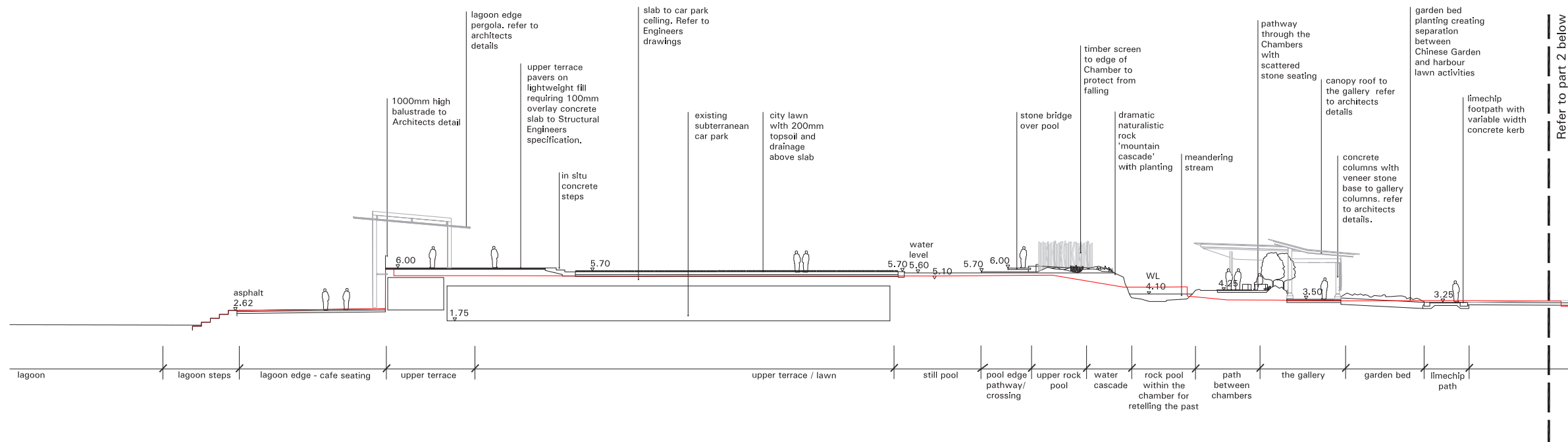
by
Wraight + Associates Ltd. - Landscape
Athfield Architects - Architecture
Duncan Campbell - Chinese Garden Consultant
for
City Shaper
Wellington Chinese Garden Society

Dunning Thornton Consultants Limited - Structural
Aurecon - Civil, Services + Environmental
eCubed- Lighting

RESOURCE CONSENT
11th April 2016

REV	DATE	ISSUE
A	RC CLIENT REVIEW	04.02.2016
B	RESOURCE CONSENT	11.04.2016

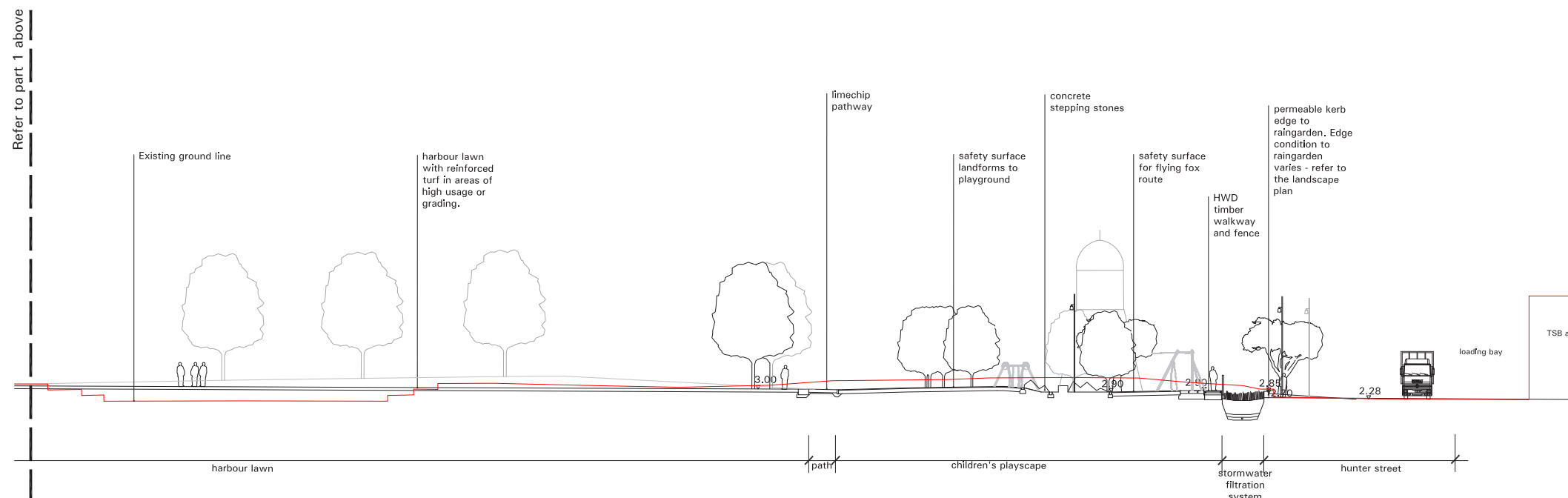
LA RC 2-00
Proposed site elevations -AA



Proposed section B-B (part 1 of 2)

BB South-North looking west, through the upper terrace, harbour lawn + playscape

scale 1:200 @ A1, 1:400 @ A3



Proposed section B-B (part 2 of 2)

BB South-North looking west, through the upper terrace, harbour lawn + playscape

scale 1:200 @ A1, 1:400 @ A3



by
Wraight + Associates Ltd. - Landscape
Athfield Architects - Architecture
Duncan Campbell - Chinese Garden Consultant
for
City Shaper
Wellington Chinese Garden Society

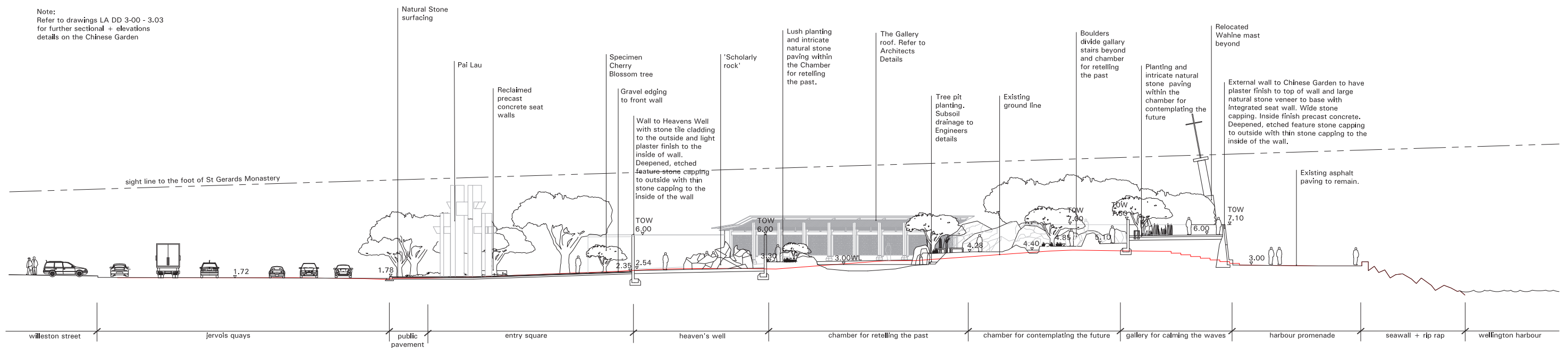
Dunning Thornton Consultants Limited - Structural
Aurecon - Civil, Services + Environmental
eCubed- Lighting

RESOURCE CONSENT
11th April 2016

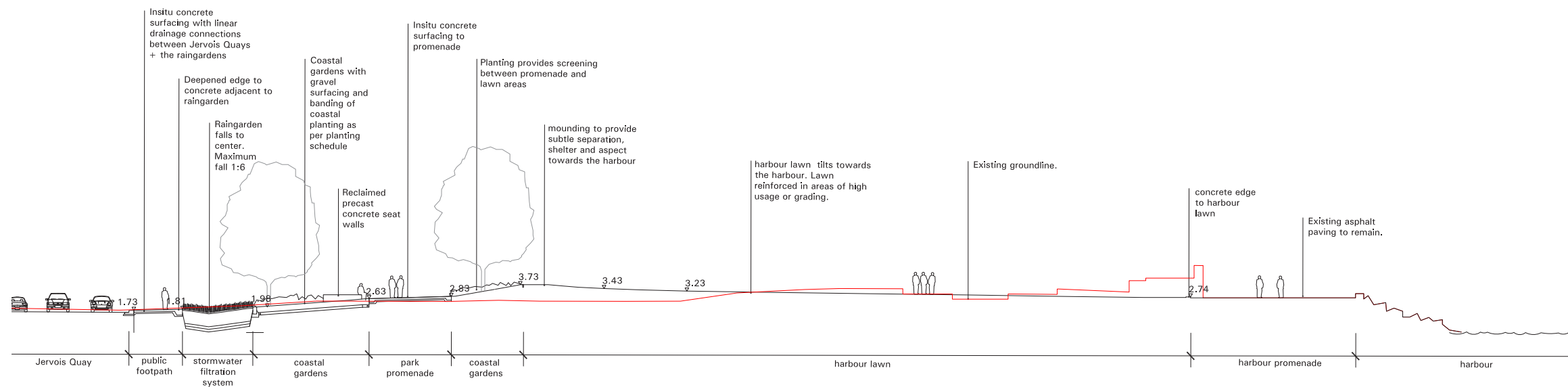
REV	DATE	ISSUE
A	RC CLIENT REVIEW	04.02.2016
B	RESOURCE CONSENT	11.04.2016

LA RC 2-01
Proposed site sections - BB

Note:
Refer to drawings LA DD 3-00 - 3.03
for further sectional + elevations
details on the Chinese Garden



Proposed section C-C
West-East looking North, through the Chinese Garden
scale 1:200 @ A1, 1:400 @ A3



Proposed elevation D-D
East-West from the Harbour looking south, through the harbour lawn, park promenade, filter field + raingarden
scale 1:200 @ A1, 1:400 @ A3



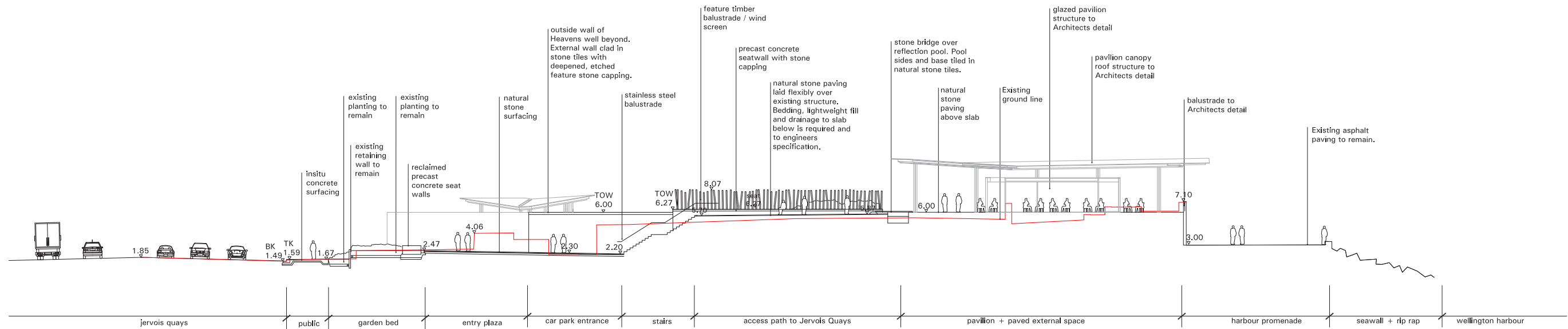
by
Wraight + Associates Ltd. - Landscape
Athfield Architects - Architecture
Duncan Campbell - Chinese Garden Consultant
for
City Shaper
Wellington Chinese Garden Society

Dunning Thornton Consultants Limited - Structural
Aurecon - Civil, Services + Environmental
eCubed- Lighting

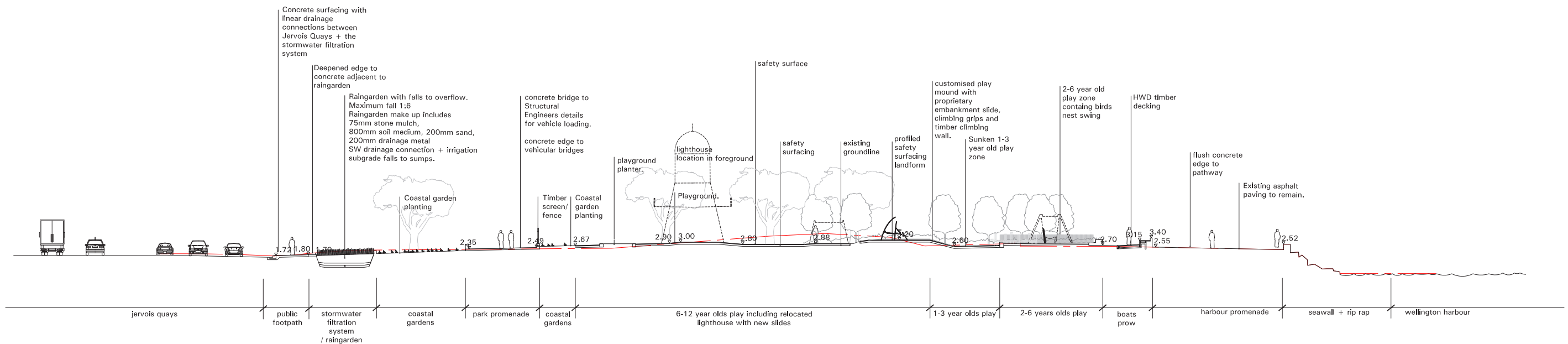
RESOURCE CONSENT
11th April 2016

REV	DATE	ISSUE
A	RC CLIENT REVIEW	04.02.2016
B	RESOURCE CONSENT	11.04.2016

LA RC 2-02
Proposed site sections - CC + DD



Proposed section E-E
 EE West - East looking north, through the pavilion
 scale 1:200 @ A1, 1:400 @ A3



Proposed section F-F
 FF West - East looking north, through the raingarden + playscape
 scale 1:200 @ A1, 1:400 @ A3



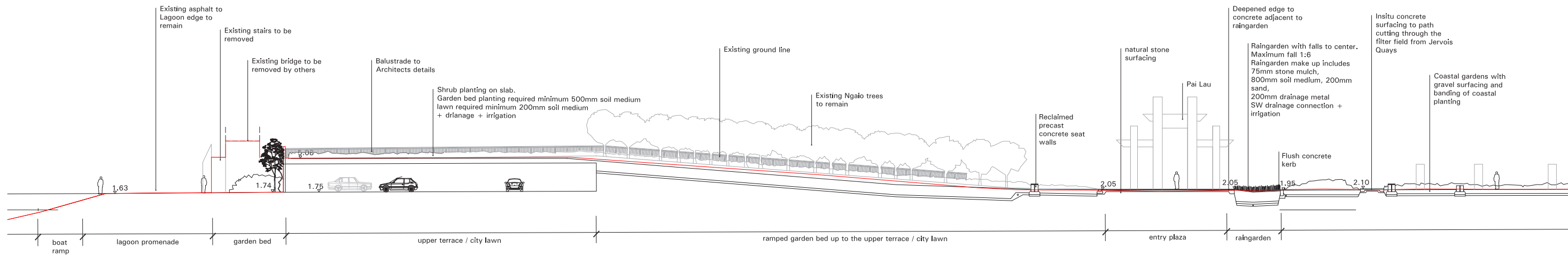
by Wraight + Associates Ltd. - Landscape
 Athfield Architects - Architecture
 Duncan Campbell - Chinese Garden Consultant
 for City Shaper
 Wellington Chinese Garden Society

Dunning Thornton Consultants Limited - Structural
 Aurecon - Civil, Services + Environmental
 eCubed- Lighting

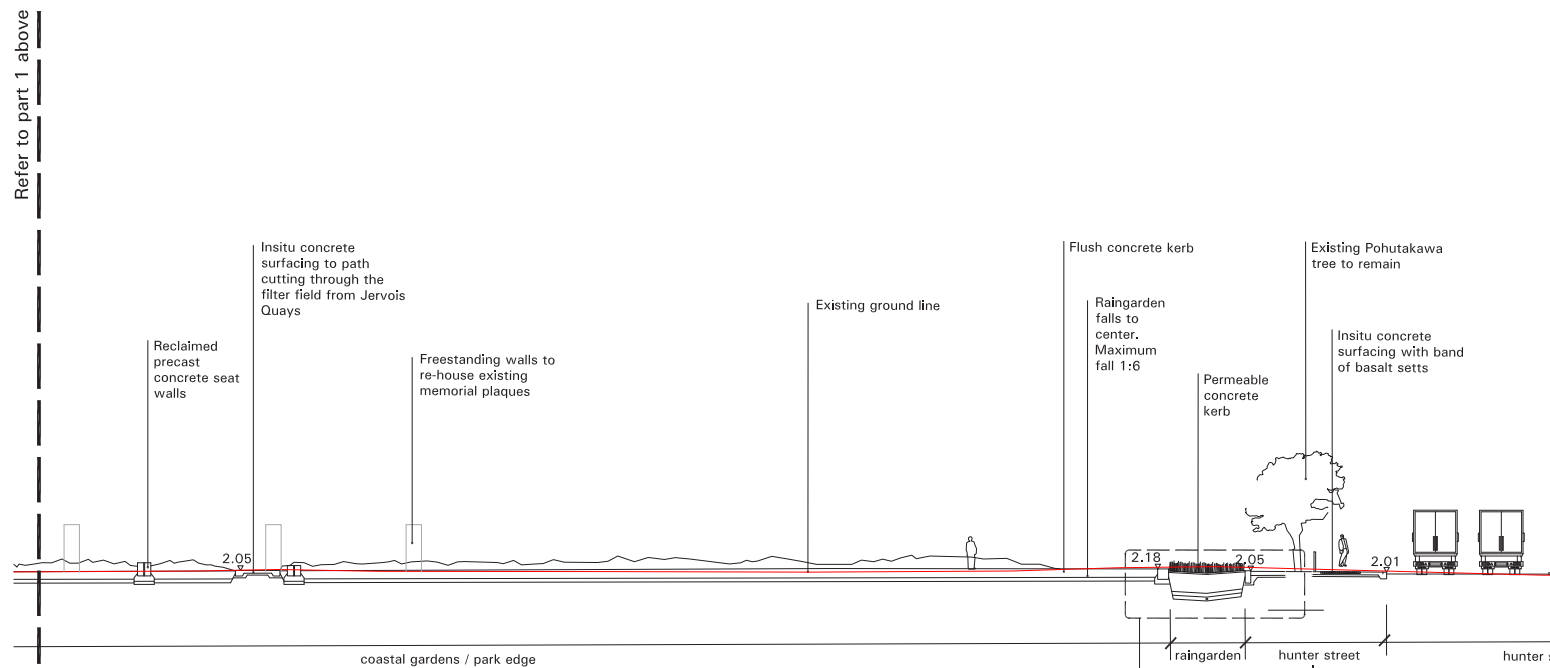
RESOURCE CONSENT
 11th April 2016

REV	DATE	ISSUE
A	RC CLIENT REVIEW	04.02.2016
B	RESOURCE CONSENT	11.04.2016

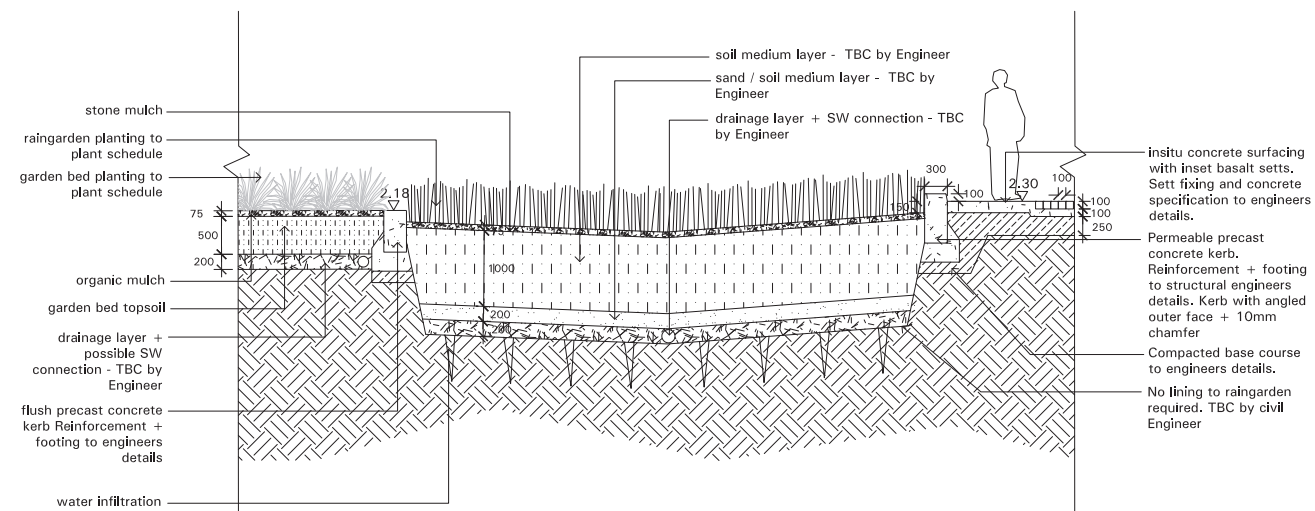
LA RC 2-03
 Proposed site sections - EE + GG



GG Proposed section F-F (part 1/2)
South-North looking west, through the upper terrace + filter field
scale 1:200 @ A1, 1:400 @ A3



GG Proposed section F-F (part 1/2)
South-North looking west, through the upper terrace + filter field
scale 1:200 @ A1, 1:400 @ A3



1 Typical detail of the stormwater filtration system.
scale 1:20 @ A1, 1:40 @ A3



by Wraight + Associates Ltd. - Landscape
Athfield Architects - Architecture
Duncan Campbell - Chinese Garden Consultant
for City Shaper
Wellington Chinese Garden Society

Dunning Thornton Consultants Limited - Structural
Aurecon - Civil, Services + Environmental
eCubed- Lighting

RESOURCE CONSENT
11th April 2016

REV	DATE	ISSUE
A	RC CLIENT REVIEW	04.02.2016
B	RESOURCE CONSENT	11.04.2016

LA RC 2-04
Proposed site sections - FF