

APPENDIX 7 - SUPPORTING INFORMATION ON CONSULTATION PROCESS

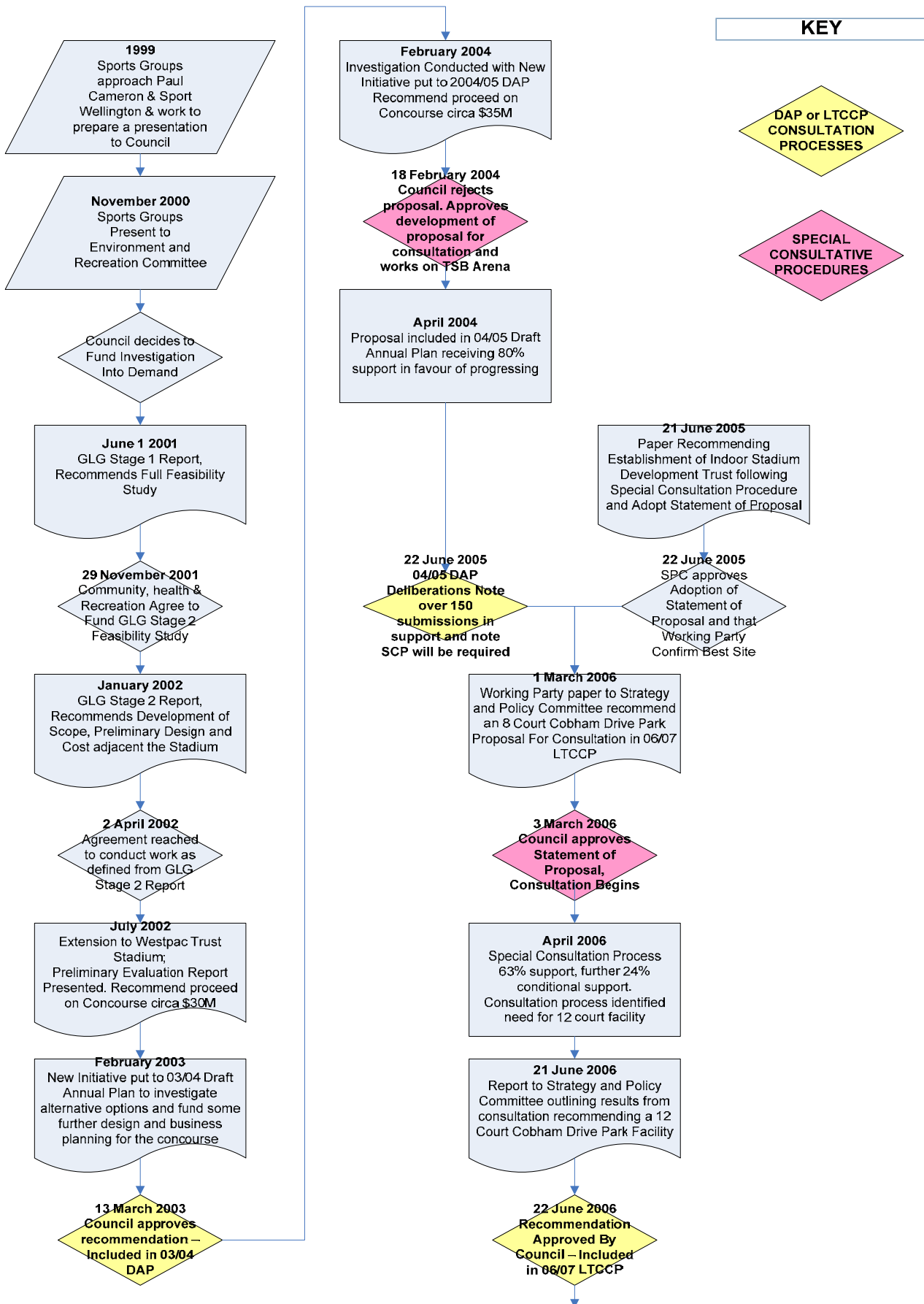
A7.1 Consultation Documents considered by Simpson Grierson

The two key documents which explain the consultation and decision-making process followed by the Council are the reports to the Strategy and Policy Committee (SPC) dated 1 March 2006 and 21 June 2006. Extracts from the draft 2005-2006 Annual Plan, the statement of proposal relating to the ICSC in the draft 2006-2016 LTCCP, and the summary of information brochure relating to that proposal were also considered. Simpson Grierson reviewed a folio of documents provided by Tim Harrod on 20 March which includes reports and papers dating back to November 2000, and the submission and engagement responses on preliminary design (for the resource consent application).

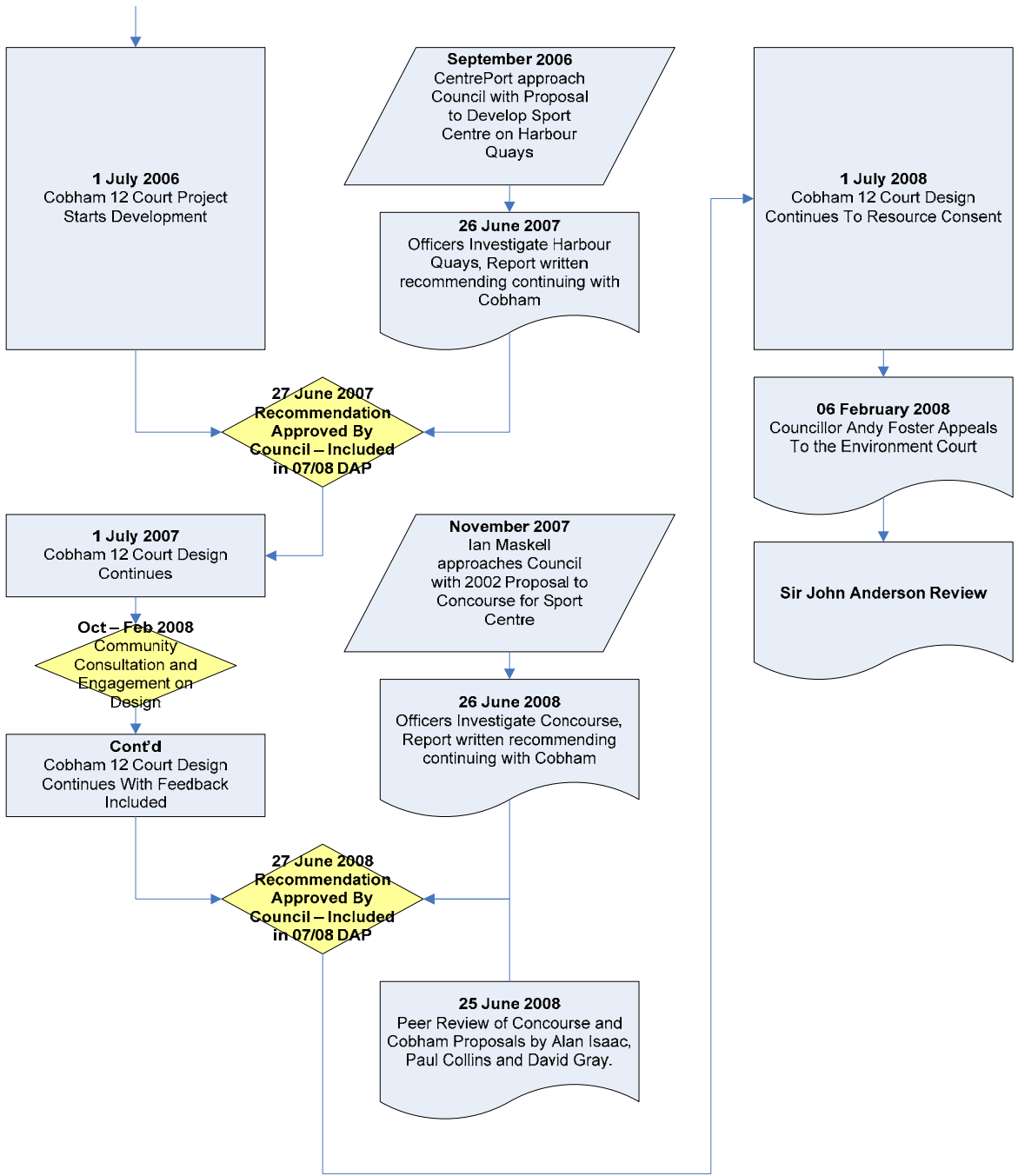
Based on these documents the key facts in regard to consultation processes for this project are:

- The Council's decision-making process in relation to an ICSC dates back at least to 2001, when it provided a grant to Sport Wellington Region for a needs assessment for an indoor multi-sport facility.
- A subsequent report by Global Leisure Group recommended the construction of a 14-court indoor facility on railway land north of the Westpac Stadium, but this option was rejected by the Council's Community, Health and Recreation Committee as too expensive.
- In July 2002 a proposal for a 12-court indoor facility on the Westpac Stadium concourse was presented to the Council, and the following year the Council approved funding to conduct additional planning and feasibility work in relation to that facility.
- The Council consulted on a proposal for an ICSC in its draft 2004-05 Annual Plan.
- The draft 2005-06 Annual Plan included information about the proposal to build the ICSC on the Westpac Stadium concourse.
- Following its formation in June 2005 the Council's Indoor Stadium Working Group analysed various options for an indoor stadium and concluded that Cobham Park was the preferred site.
- A summary of the Working Group's assessment of six potential sites (Hataitai Park, north of Westpac Stadium, Westpac Stadium concourse, Rongotai College exhibition ground, the Show Buildings Dance and Drama Centre, and Cobham Park) against 10 criteria was included in the Strategy and Policy Committee report dated 1 March 2006
- That report noted that the proposal to construct an ICSC involved construction of a significant activity and a 'strategic asset'
- The report recommended that a proposal to establish an ICSC at Cobham Drive Park be included in the draft 2006-16 LTCCP, and a proposal to construct an 8-court facility was included within that document
- On 21 June 2006 the Strategy and Policy Committee recommended to the Council that it proceed to develop a 12-court ICSC at Cobham Park
- The adopted 2006-16 LTCCP refers to the Council's commitment to build a 12-court ICSC at Cobham Park with an estimated capital cost of \$40 million

A7.2 Council and Consultation Process Diagram



A7.2 Council and Consultation Process Diagram Cont'd



KEY

