

Growing Community Sport

An Indoor Community Sport Centre Update

Since last we met...

- Harbour Quays options were investigated in late 2006. In June 2007 the Council reconfirmed its decision to continue with Cobham Park site.
- Concept design was finalised and estimated.
- Preliminary design commenced.
- Engaged with the public and sporting codes in November and December 2007.
- Continued preliminary design including the feedback from engagement.



Design – the final goal

- Unique external appearance and form
- Sensitive to our neighbours needs
- High quality playing environment;
 - Surface
 - Light
 - Ventilation
- Future proof
- Low operation and maintenance



Illustration by www.stantialstudio.co.nz ©

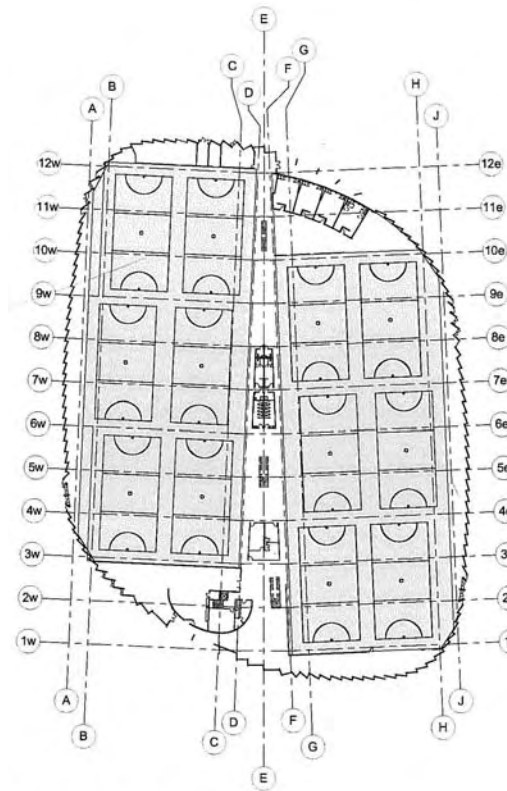
Absolutely

POSITIVELY

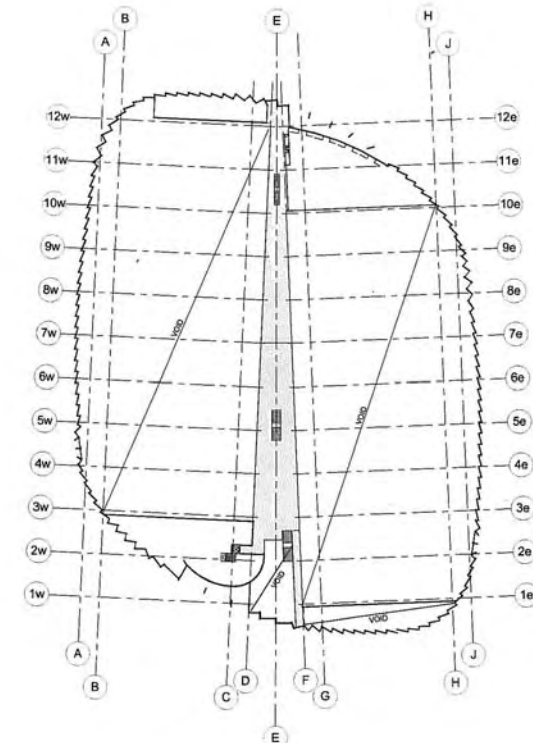
ME HEKE KI PŌNEKE
WELLINGTON CITY COUNCIL **Wellington**

Design – where we start from

- Align design with the approved budget
- No compromise on the building, it's materials and playing environment
- Reduced amenities and “nice to haves”
- Enabled structure and services

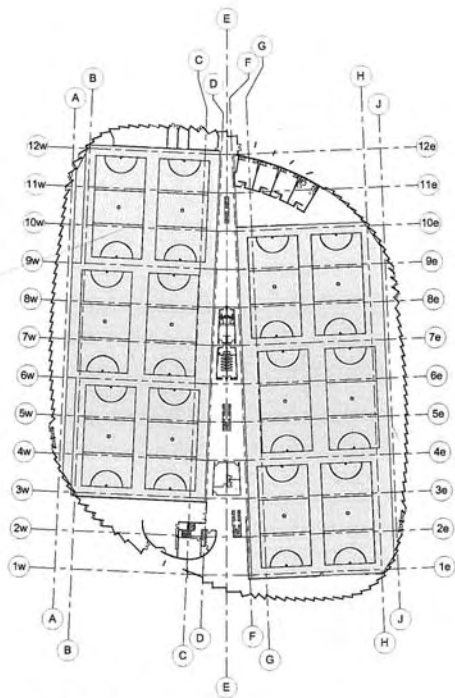


Ground Floor Key Plan

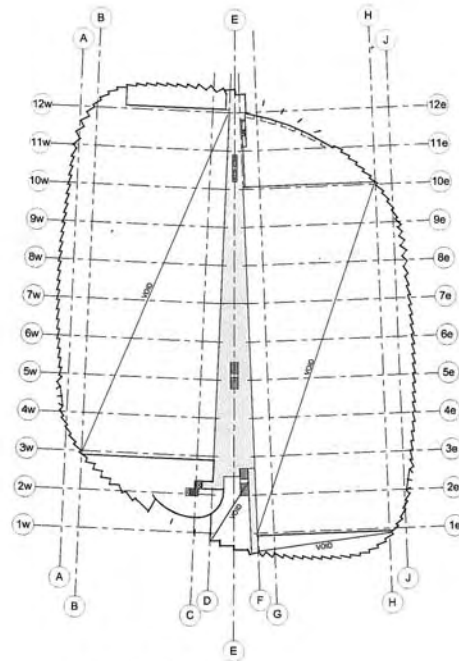


Mezzanine Level Key Plan

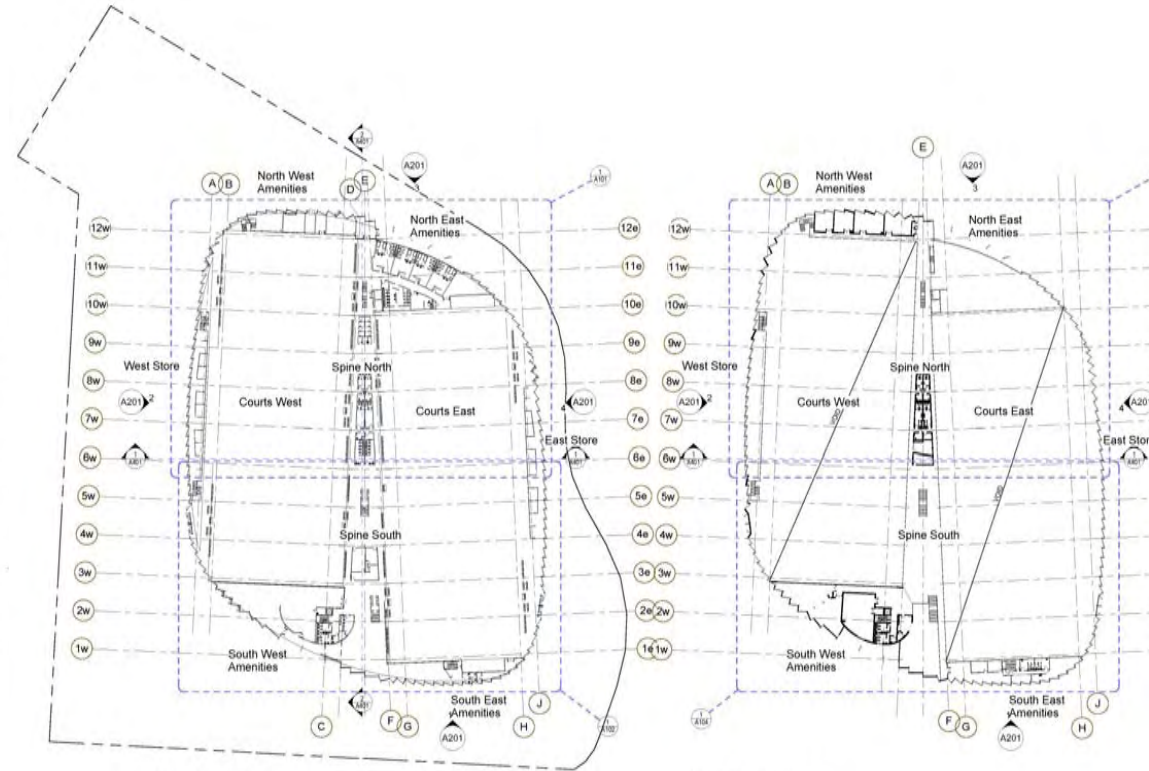
Design – evolution



Ground Floor Key Plan



Mezzanine Level Key Plan



Ground Floor Key Plan

Mezzanine Level Key Plan

Where we start
from

The final
goal

Absolutely

POSITIVELY

ME HEKE KI PŌNEKE
WELLINGTON CITY COUNCIL **Wellington**

Design – evolution

- Engagement;
 - Undercroft
 - Height
 - Landscape
 - Wind
 - Sound
 - Traffic
- Key code components;
 - Timber floor
 - Court dimension vs. building footprint \$



Illustration by www.stantialstudio.co.nz

Moving forward

- Timeline;
 - Resource consent lodgement delayed till May/June 2008
 - Construction;
 - start December 2008
 - complete mid 2010
- Activities;
 - Further discussion with the codes
 - Start developed design after resource consent lodged



Questions?

Close

- There is a Draft Annual Plan Submission form in each info pack for those projects outlined earlier. These can be filled out tonight and hand to the registration desk on the way out or returned as per the instructions on the form.
- To receive regular Sport and Recreation information related to Wellington City Council visit <http://www.wellington.govt.nz/services/recsupport/forum.html>
- Should you wish to receive the ICSC newsletter please provide your contact details to Tim Harrod as noted in the newsletter included in your info pack.
- This presentation will be made available for download when you visit <http://www.wellington.govt.nz/projects/new/indoorsports.html>
- The Council contacts are Jamie Delich:
 - phone 803 8353
 - email jamie.delich@wcc.govt.nz
 - or
 - Tim Harrod:
 - phone 803 8117
 - email tim.harrod@wcc.govt.nz