

3. GOALS, OBJECTIVES AND POLICIES

HERITAGE CONSERVATION

Otari-Wilton's Bush has an internationally significant role in the conservation of New Zealand's natural heritage. It provides a unique experience through the combination of a nationally important native plant collection with a large remnant of ancient forest, all of which is captured within a spectacular valley setting.

3.1 PLANT COLLECTIONS

3.1.1 ISSUES AND OPPORTUNITIES

Native Plant Collections

The point of difference for Otari-Wilton's Bush as a botanic garden is its exclusively native plant collection.

The relatively temperate climate at Otari-Wilton's Bush enables a variety of species to be grown; however the physical area available to collections is limited to the current plant collection areas (see *Figure 1*). Whilst the space limitations at Otari-Wilton's Bush present opportunities for innovative thinking, for example, some collections may extend beyond the physical boundaries of the reserve as 'satellite gardens', it does mean that each collection at Otari-Wilton's Bush needs to be closely justified.

Currently collections occur throughout the cultivated area in taxonomic beds (eg. Hebe species border, Asteraceae, Carmichelia, Gymnosperms), ecological associations (eg. alpine garden, Canterbury border, rock garden) and general themes (eg. endangered species border, divaricates). These are described, interpreted and labelled to varying degrees, styles and quality. To meet the modern day expectations of education and conservation, and to position Otari-Wilton's Bush internationally, the plant collections must be informative and offer the visitor a sense of understanding and awareness of New Zealand's flora, as well as provide an opportunity for people to see how native plants can be used in horticultural and garden settings.

Collection Themes

The Collection Review currently being carried out is a useful way to ensure the relevance of the collections to current objectives and should be informed by principal themes. Principal themes that are in keeping with the historic role of Otari-Wilton's Bush, and in helping visitors value and appreciate New Zealand's flora are:

Representative collection of New Zealand flora. This is in keeping with Cockayne's vision of collecting as many species as possible, but recognises that collection space is limited. Management should be focused on ensuring that Otari-Wilton's Bush continues to hold the most extensive live collection of NZ plants, but that these are of sufficient variety to be of educational value about the characteristics and range of New Zealand's flora.

Patterns of variation. These collections are about providing the opportunity for visitors to explore the distinctive variety in New Zealand's flora and includes naturally occurring hybrids, comparisons of plants from one genus (eg hebes), community associations (eg characteristics of salt-tolerant or drought-tolerant species), and cultivars where they are of historic or cultural significance.

Plants of interest. These are plants that have unusual and fascinating characteristics and that either tell the story of New Zealand's ecological history or are of cultural significance eg Maori medicinal plants, divaricating plants, sexual dimorphism.

Conservation. A number of New Zealand's plants at Otari-Wilton's Bush are rare, endangered or threatened. Collections of these plants have three roles: (1) educating people about the pressures on native plants, (2) demonstrating and encouraging the use of threatened and rare plants in horticultural and gardening use, (3) acting as ex-situ 'insurance' populations of plants. Conservation collections should be managed to enhance these three roles.

The native forest is also an integral part of the native flora of Otari-Wilton's Bush, and although it is not manipulated as with plant collections, it is essentially an exhibit of locally representative examples of flora, conservation values, natural (and unnatural) patterns of variation, and plants of interest. Interpretative integration with the plant collections in this sense is desirable, however due to the significance of the forest for the Kaiwharawhara Catchment and Wellington as a whole, and the different management issues, it is dealt with in another section of this management plan.

3.1.2 GOALS AND OBJECTIVES FOR PLANT COLLECTIONS

To continue to be New Zealand's leading native botanic garden, providing plant collections representative of New Zealand's natural heritage, by:

1. Maintaining and developing informative and educational plant collections which represent and describe New Zealand's native flora.
2. Showcasing native plants in landscape design and horticultural use.

To participate in and contribute to native plant conservation by:

1. Participating in and contributing to small scale breeding and propagation programmes for conservation purposes, including plant recovery programmes, in liaison with conservation organisations.
2. Maintaining and developing plant collections with a conservation role.
3. Acting as ex-situ 'insurance' populations of plants.

3.1.3 POLICIES

3.1.3.1 MANAGING THE PLANT COLLECTIONS

- i) Plant collections shall be managed according to the Plant Collections Policy of the Wellington Botanic Gardens.
- ii) All plant collections must be restricted to the cultivated areas (refer to *Figure 1*).
- iii) All plant collections (listed in *Appendix 3*) shall individually be reviewed and justified with regard to the following:
 - (a) Fit and function with the themes listed in 3.1 above.
 - (b) Contribution to the vision, goals and objectives of Otari-Wilton's Bush.
 - (c) The significance of the collection (including historic, and international and national importance).
 - (d) Public appeal.
- iv) Collection Management Plans shall be prepared and kept up to date for each collection, setting out:
 - (a) Objectives for the collection
 - (b) How it fits with the key themes (see Section 3.1)
 - (c) Justification for inclusion according to those considerations listed in 3.1.3.1 iii
 - (d) Main users/audience

- (e) Management regime
- (f) Associated education or conservation programmes
- v) Collection management plans shall be reviewed annually.
- vi) Plant collections shall be maintained and enhanced in a way that complements the landscape character and that enhances visitor experience.
- vii) Plant collections shall be recorded on the Plants (BG) Database.
- viii) Interpretative information shall be available at every collection with a principal theme (as specified in Section 3.1.1 above).
- ix) Plant labels will be provided to assist the public to identify collection plants where appropriate.
- x) Cultivars will be retained and acquired if they are of historic or horticultural significance as decided by the Curator/Manager, and must be maintained as follows:
 - (a) Cultivars must be clearly labelled as such
 - (b) Cultivars must be in keeping with collection themes
- xi) Ethnobotanical Maori collections (where ethnobotany is the study of how plants have been used, managed and perceived in human societies) shall be managed in liaison with Tangata Whenua and traditional weavers.
 - (a) The cultural harakeke collection at the North Picnic Area shall continue to be maintained.
 - (b) Harvesting of the harakeke at the North Picnic Area and the Flax Clearing is permitted subject to availability and with the prior written approval of the Curator/Manager.

3.1.3.2 AREAS AVAILABLE FOR CULTIVATION

- i) Gardens are restricted to those areas that are currently cultivated, namely: the plant collections around Cockayne Lawn and below Cockayne Lookout, and collections around Kauri and Ponga Lawns including the Wild Garden.
- ii) Clearings will be maintained at the Troup Picnic Area, North Picnic Area, South Picnic Area (adjacent to Project Kaiwharawhara site) and the Flax Clearing.
- iii) The harakeke collection at the North Picnic Area, and harakeke grown at the Flax Clearing shall be maintained.

3.1.3.3 ACQUIRING NEW PLANTS (ACCESSIONS)

- i) The written authorisation of the Minister of Conservation for the introduction of new plants for addition to the collections will be sought as required by the Reserves Act 1977.
- ii) Priority will be given to acquiring plants that enhance themes identified in Section 3.1 and that are under-represented.
- iii) All future accessions, with the exception of cultivars, shall be of known wild origins and shall be accurately recorded with relevant field collection data. Cultivars must be of known history and accurately recorded.
- iv) All specimens sourced from other organisations and collections need to be accompanied with written confirmation of their origin.
- v) Staff will actively seek opportunities to collect plants from locations within the New Zealand territorial region that are currently under-represented in collections.
- vi) Existing specimens of unidentified origin will be replaced with specimens of identified origin at the discretion of Otari-Wilton's Bush staff unless:
 - (a) Plants have developed into mature species.
 - (b) Plants have special historical or other significance.

3.1.3.4 PLANT DE-ACCESSIONS

- i)* Any de-accessions of entire collections shall be carried out in accordance with the Plant Collections Policy for the Botanic Gardens of Wellington and in consultation with the appropriate stakeholders.
- ii)* Any de-accessions of plants shall be approved by the Curator/Manager.
- iii)* In addition to the above policies, plants may be de-accessioned if:
 - (a) Hybridisation with any of the naturally occurring forest species is observed either at Otari-Wilton's Bush or elsewhere in New Zealand.
 - (b) Renewal is required for refreshing educational and interpretative collections.
 - (c) There are other plants of the same species in the collection.
- iv)* Any plant that is removed from the collections and which is of conservation or heritage significance will, if possible, be offered to other collections or scientific institutions for replanting or propagation.

3.1.3.5 BREEDING AND PROPAGATING

- i)* Otari-Wilton's Bush will retain its own nursery in order to maintain full control and accuracy in the handling of specialist plant material.
- ii)* The primary role of the nursery will be to support the collections and threatened plant conservation strategies.
- iii)* Plants required for revegetation and restoration programmes within the reserve and Kaiwharawhara catchment, as well as plants for Open Days, may be grown at other nurseries, and where possible using Otari-Wilton's Bush sourced material.
- iv)* Small scale plant breeding and propagation programmes will be carried out for conservation purposes and in liaison with conservation organisations such as Department of Conservation or New Zealand Plant Conservation Network.

3.1.3.6 PEST AND DISEASE CONTROL

- i)* All pest and disease control carried out at Otari-Wilton's Bush shall be based on the principles of Integrated Pest Management.
- ii)* Preventative cultural practises and mechanical (physical) controls are to be the first control methods considered, followed by consideration of biological controls, and finally consideration of chemical controls.
- iii)* Pests should be observed and the level of infestation confirmed to be unacceptable prior to carrying out control, and monitored throughout the control.
- iv)* Wellington City Council approved chemical controls are to be used and managed to minimise environmental risk, including the use of pest specific chemicals.
- v)* Staff should seek specific control advice from other institutions practising Integrated Pest Management.

3.1.4 IMPLEMENTATION

1. Completion of the Collections Review, taking into consideration the themes described in Section 3.1.1 and ensuring these are clearly represented by collections.

3.2 NATURAL ECOSYSTEMS:

3.2.1 ISSUES AND OPPORTUNITIES

Forest

Otari-Wilton's Bush contains one of the largest areas of native forest on the Wellington Peninsula. One of the few remaining remnants of podocarp-northern rata forest (Wilton's Bush) occurs within the forest area; a forest type that was once common throughout inland Wellington of which less than 1% remains. The protection of the forest area is important due to its heritage and intrinsic value, its role as a seed source, its biodiversity values, and ecosystem services.

The forested area contributes to Otari-Wilton's Bush as a 'living museum', preserving habitat for associations of species that would have once been common in Wellington; including less charismatic forest species such as fungi and invertebrates. It also provides habitat for wildlife, particularly for many of the birds reintroduced via Karori Wildlife Sanctuary. Having such a significant area of forest so close to the city provides unique educational opportunities and a research resource. In addition, it is an essential part of the history and heritage of Otari-Wilton's Bush.

To date, the management of the forest area (with the exception of the revegetation project between Ian Galloway Park and Otari-Wilton's Bush) has been based on low levels of intervention. The most significant management intervention has been the extensive possum control programme, following which a marked increase in bird numbers in the reserve was observed. This is carried out in collaboration with Greater Wellington Regional Council and has been running since 1993. It has also resulted in some rodent by-kill. Weed control has been responsive and, with the exception of the old man's beard (*Clematis vitalba*) eradication programme, relatively *ad hoc*. A fencing programme along the Outer Green Belt has ensured that domestic stock no longer get into the reserve. Five minute bird counts are carried out bi-annually as part of the City-wide biodiversity monitoring programme.

There is the opportunity to more actively manage the forested area so that it provides a relatively safe habitat for indigenous wildlife, and to ensure that podocarp recruitment is sufficient to return the whole forested area back to its pre-European and undisturbed state. Although the nature of the forest varies throughout the reserve (from original primary forest, to disturbed secondary forest) the goals are the same for the whole forest area, and so it may be managed as one.

Kaiwharawhara Catchment

The Kaiwharawhara Catchment is an area of intensive restoration work; much of which is carried out by community volunteers. Nearly 20% of the Kaiwharawhara Catchment is covered by native vegetation, and the forest area of Otari-Wilton's Bush is a significant part of this.

Protecting and enhancing the forest ecosystems of Otari-Wilton's Bush has always been a fundamental role of the reserve. In recent years there has been a shift in focus from just the remnant forest, to the wider ecology of the Kaiwharawhara Catchment. Of particular importance is the role of Otari-Wilton's Bush as an ecological corridor, both for bird movement from Karori Wildlife Sanctuary, east to the mouth of the Kaiwharawhara Stream, and north along the Outer Green Belt concept area; and as a biodiversity pocket for fish and aquatic invertebrate movement along the Kaiwharawhara Stream.

Stream

Currently, the main issue for the Kaiwharawhara Stream is that of pollutants from stormwater run-off, particularly during high peak flow events. Leachates from the upstream landfills are directed into the sewer system, and most of the main sewer line running along Kaiwharawhara Stream was replaced in the 1990s. These are monitored in accordance with infrastructure asset maintenance requirements.

Stream bank erosion caused by stormwater flow from culverts is another issue. This is being mitigated by some of the voluntary planting carried out as part of *Project Kaiwharawhara*, the community catchment protection project.

There is an opportunity for Otari-Wilton's Bush to advocate for stream and water quality protection in liaison with Greater Wellington Regional Council.

Both the forested area and stream are already used for research by tertiary students, adult education and occasional school groups.

3.2.2 GOALS AND OBJECTIVES

To protect and preserve the natural ecosystems of Otari-Wilton's Bush by:

1. Protecting the original forest remnant as a representative example of the original lowland forest cover of the Wellington peninsula and to sympathetically manage and restore surrounding areas of native forest.
2. Maintaining and enhancing the riparian habitat and stream biota within Otari-Wilton's Bush.
3. Providing safe habitat for indigenous flora and wildlife as part of the Kaiwharawhara ecological corridor and catchment.

3.2.3 POLICIES

3.2.3.1 FOREST MANAGEMENT

- i) Specialist advice shall be sought to inform the ecological management of the forest area. This will include forest and stream health monitoring advice.
- ii) The planted kauri, podocarp and nothofagus groves will be retained.
- iii) For management purposes the forest area will be divided into five different forest management zones (refer to *Figure 2*). Each zone shall be managed primarily in accordance with the above goals and objectives (Section 3.2.3), and secondly in accordance with the following:
 - (a) Zone 1: Kaiwharawhara Stream-Wilton Park forest sector (refer to *Section 3.7.2* for a definition of this area) will be managed as a protective buffer to the other forest areas, particularly in terms of preventing weed spread. The key issue for this area is the continuation of the association with Project Kaiwharawhara and the streamside restoration work. This zone will be managed primarily for education and restoration purposes.
 - (b) Zone 2: South western forest sector; includes the ancient rimu. This area includes two small tributary streams and has a history of land clearance. Darwin's barberry and gorse dominated scrubland are the key issues here. This zone will be managed primarily for forest enhancement and wildlife habitat restoration.
 - (c) Zone 3: North western forest sector; includes the flax clearing area. This zone has also had significant disturbance in the past, and

balancing recreational use with environmental protection will be the main management issue. This zone will be managed primarily for forest enhancement and wildlife habitat restoration, although the flax clearing and historic plantings will be retained.

- (d) Zone 4: Chartwell Drive area. Weeds are a significant issue for this zone, with sources from roadside dumping and private gardens. The area will be managed as a buffer to other forest areas with a focus on restoration.
- (e) Zone 5: Wilton's Bush. Mostly original forest, with weeds as an ongoing problem. The main management issue will be its effective protection and enhancement, and balancing this with educational and recreational use. This area will be managed as a representative example of ancient forest, with emphasis on education and interpretation. No new cultivations or tracks are permitted within this area.

iv) Planting is acceptable (using eco-sourced native plants as defined with the assistance of specialists) in the following situations:

- (a) Where plants have been deliberately removed and natural recolonisation is likely to be hindered by invasive weeds
- (b) Where weeds have been eradicated
- (c) For enhancing roadside, picnic site and carpark areas
- (d) For stabilising slips threatening public access, property, and/or Kaiwharawhara stream.
- (e) For forest enhancement planting (eg podocarp species)
- (f) For restoration planting where appropriate.

v) Native plants within forested areas may only be removed in the process of essential maintenance to tracks, fences, transmission line structures (trees may be trimmed) provision of seating along tracks, service pipe maintenance, and maintenance of the Flax Clearing giving consideration to:

- (a) Minimising impacts
- (b) Supervision by Otari-Wilton's Bush staff
- (c) Naturally occurring threatened plants
- (d) Transplanting affected trees, shrubs and plants where practicable.

vi) Trees or branches that have fallen or are likely to fall will only be removed where they are a hazard to public safety, obstruct a track or could damage structures. Such timber may be available for special uses, such as Maori cultural purposes in liaison with the Wellington Tenth's Trust as Mana Whenua.

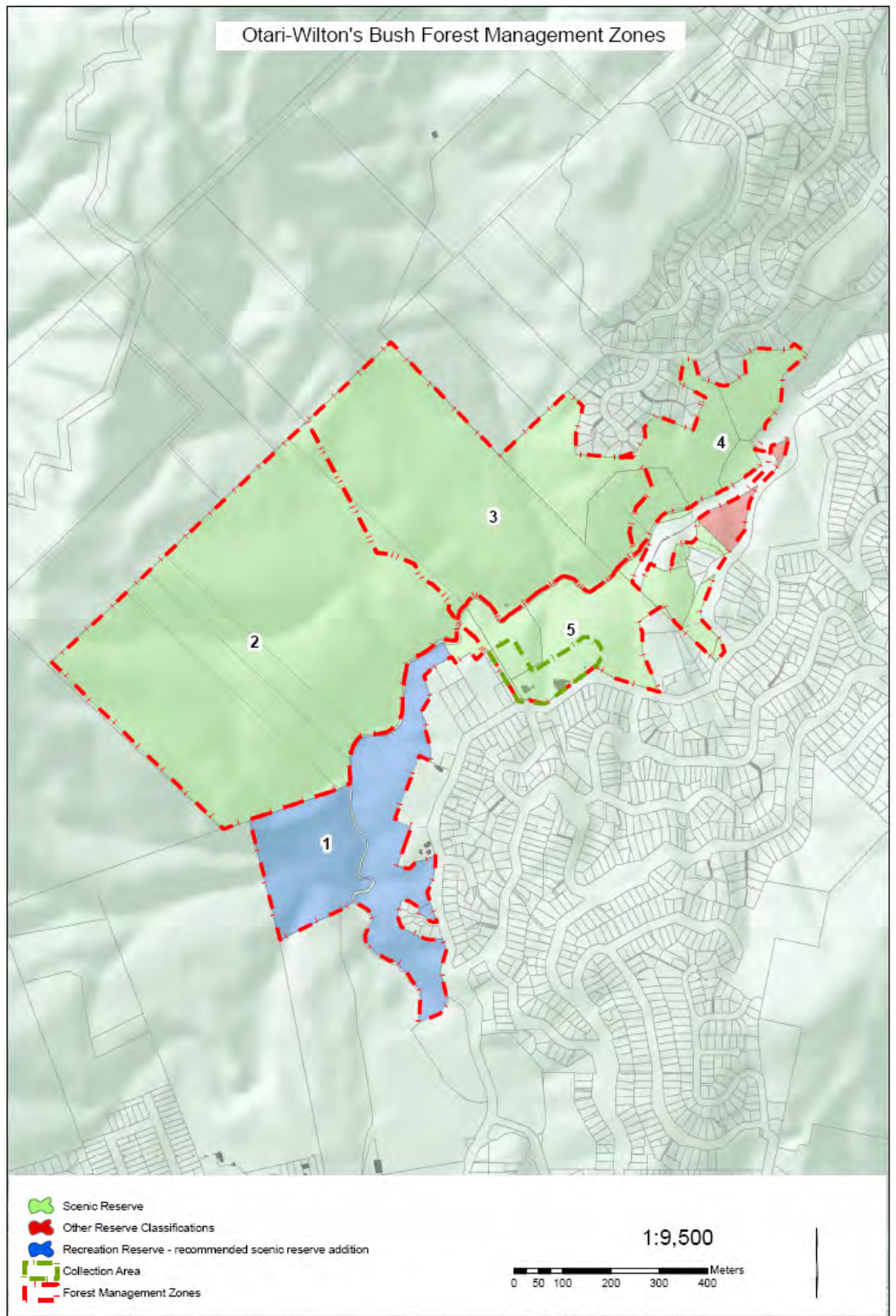


Figure 2. Forest Management Zones

3.2.3.2 WILDLIFE MANAGEMENT

- i. All indigenous wildlife will be protected.
- ii. The seasonal five minute bird count programme will be continued. In addition, monitoring for bird breeding success will be established.
- iii. Research and information gathering of the presence of native fauna, including aquatic fauna, invertebrates, and herpetofauna will be supported.
- iv. The reintroduction of fauna known historically to have occurred in the Wellington Peninsula forests may be considered and implemented with approval from the Department of Conservation; particularly for reintroductions carried out in conjunction with Karori Wildlife Sanctuary.

3.2.3.3 PEST ANIMAL CONTROL

- i. Pest animals will be monitored and managed in accordance with the Wellington City Council Pest Management Plan (2005) and Greater Wellington Regional Council's Regional Pest Management Strategy.
- ii. A detailed animal pest management plan shall be prepared and implemented, and include consideration of:
 - a. Sustained possum and rodent control programme in continued collaboration with Greater Wellington Regional Council.
 - b. Goat eradication, including on adjoining land.
 - c. Feral cat control and monitoring.
 - d. Mustelid control and monitoring.
 - e. Rabbit and hare control, particularly along riparian margins.
 - f. Control or removal of other pest species.
 - g. Destruction of wasp nests.
 - h. Extending all animal pest control measures on to adjacent lands where possible within financial and staff resources.
- iii. Efforts will be made to educate local residents and visitors of the predatory effects of domestic cats and dogs, and offer advice as to how to reduce the impact of their pets on the wildlife of Otari-Wilton's Bush.
- iv. Monitoring and maintenance of fences that border Otari-Wilton's Bush.

3.2.3.4 WEED CONTROL

- i. Weeds will be monitored and managed in accordance with the Wellington City Council Pest Management Plan (2005) where Otari-Wilton's Bush is identified as a Key Native Ecosystem, and with Greater Wellington Regional Council's Regional Pest Management Strategy.
- ii. A detailed weed management plan shall be prepared and implemented, and include consideration of:
 - a. Priorities for weed control based on urgency of control scores.
 - b. Co-ordination with restoration work.
 - c. Co-ordination with weed control on adjacent Wellington City Council land.
 - d. Monitoring to identify effectiveness of control, spread of existing species, and invasion by previously unrecorded species, including invasive native species such as karaka, hoheria and pomaderris.
 - e. Education programme for private land owners on surrounding properties.

3.2.3.5 FIRE MANAGEMENT

- i. A fire risk management and emergency plan will be maintained for Otari-Wilton's Bush. This will be done in the wider context of a fire risk strategy for all Council property, but should be facilitated and monitored by staff.

- ii. Special conditions will be recommended for permits issued for fires near Otari-Wilton's Bush boundaries on adjacent rural and residential properties.

3.2.3.6 STREAM MANAGEMENT

- i. Council shall continue to seek improvement in the water quality of the Kaiwharawhara Stream to a level that meets the relevant standards set by Greater Wellington Regional Council by:
 - a. On-going maintenance of the leachate filter at the base of the old Curtis Street landfill
 - b. Identifying and treating further sources of leachate within the catchment
 - c. Upgrading and maintaining service lines that may directly or indirectly adversely affect the water quality
 - d. Regular monitoring of faecal coliform bacteria levels and other Water Quality Index parameters
 - e. Encouraging other appropriate measures.
- ii. A public notice in the Troup Picnic Area will identify water quality risks and advise of tap water availability.
- iii. Revegetation along riparian zones will be encouraged in order to prevent degradation of stream banks and stream life; with the exception of the Troup Picnic Area.
- iv. Interpretation and education for local residents and visitors of the impacts of pollutants on stream quality will be encouraged, including how individuals can make a difference.
- v. Otari-Wilton's Bush will continue to contribute to the objectives of Project Kaiwharawhara.

3.2.3.7 STAFF EXPERTISE

- i. To facilitate good forest management, staff with skills in botany or plant ecology will be part of the Otari-Wilton's Bush staff resource.

3.2.4 IMPLEMENTATION (in priority order)

1. Development and implementation of weed management plan.
2. Development and implementation of animal pest management plan.
3. Advisory group of experts established to offer advice on ecological management, including forest health monitoring, enhancement and wildlife habitat restoration (refer to *Section 3.2.3.1(i)*).
4. Include those forest zones with an education focus (zones 1 and 5) in Interpretation Plan (see *Section 3.4.4*).
5. Collaboration with Victoria University, Karori Wildlife Sanctuary and other conservation and research organisations on developing initiatives for researching the wildlife (including vegetation) and urban ecology of Otari-Wilton's Bush.

3.3 CULTURAL HERITAGE

3.3.1 ISSUES AND OPPORTUNITIES

Otari-Wilton's Bush has a rich cultural history; from early Te Atiawa/Taranaki Whanui settlement, to its use as an informal public recreation and reserve area, through its years as a gazetted reserve (see Appendix 2 for a Historic Outline).

As with the rest of the city, several layers of culture have developed at Otari-Wilton's Bush; mainly a reflection of Maori and then European land occupation. It is important to acknowledge each layer for a full understanding of our heritage, and that these layers create a unique cultural landscape.

Throughout this document, the cultural landscape of Otari-Wilton's Bush is recognised. This includes the protection of Maori cultural values through all aspects of management and the practise of kaitiakitanga.

This cultural history, as well as the natural, built, and social heritage helps make Otari-Wilton's Bush the place it is today. Heritage provides a context for the present, and also helps to shape the future. It is important then that the heritage aspects of Otari-Wilton's Bush are recognised, protected, and communicated.

Some of the key heritage values of Otari-Wilton's Bush are as follows. It is a significant historic place, both nationally and in Wellington, as it is the only public botanic garden in New Zealand dedicated solely to native plants. It was recognised as a Garden of National Significance by the Royal New Zealand Institute of Horticulture in 2004. Its mature podocarp northern rata forest is the one of few remaining remnants of this once common forest type on the Wellington Peninsula and contains some of Wellington's oldest trees, including an 800 year old rimu.

There is a strong connection to Job Wilton, a locally significant settler and farmer and Wilton Farm House. Wilton's Bush, owned by Job Wilton was already a popular recreation area from the 1860's. The bush was protected by its owners until it was added to the reserve in 1925.

The bush is intimately associated with Dr Leonard Cockayne who was an internationally significant botanist. Dr Cockayne contributed his knowledge through botany and ecology research. He was involved in the development of Otari-Wilton's Bush as an open-air native plant museum, which was opened in 1926.

Otari-Wilton's bush has high historic, social, and scientific values.

The area is already recognised as a Heritage Area in the Wellington City Council District Plan, and the privately owned Wilton Farmhouse and Outbuildings (1860) are listed as Heritage Buildings. In addition, the Built Heritage Policy (2005) describes clear goals and actions for the conservation of Wellington's built heritage.

3.3.2 GOALS AND OBJECTIVES

To recognise, protect and promote the cultural heritage of Otari-Wilton's Bush by:

1. Recognising significant features of Otari-Wilton's Bush cultural heritage, including built and social heritage and any aspects of cultural significance.
2. Protecting the cultural heritage of Otari-Wilton's Bush.
3. Fostering appreciation of the cultural heritage of Otari-Wilton's Bush through effective interpretation.

3.3.3 POLICIES

3.3.3.1 RECOGNITION AND PROTECTION

- i. To continue to recognise the city-wide heritage significance of Otari-Wilton's Bush.
- ii. To ensure the significant heritage values of Otari-Wilton's Bush are protected from damage associated with inappropriate use or development.
- iii. Authority shall be sought from the New Zealand Historic Places Trust prior to any work being carried out for which there is reasonable cause to suspect that an archaeological site (recorded or unrecorded) may be damaged, modified, or destroyed by any activity in accordance with the Historic Places Act (1993)..
- iv. Trees that are of significance to Mana Whenua shall be identified and a protocol will be developed so that should a significant tree fall, or be likely to fall, the appropriate rites and ceremonies can take place.

3.3.3.2 RESEARCH

- i. To recognise the cultural heritage of Otari-Wilton's Bush through collating relevant historical material on-site to be an archival resource for staff, Otari-Wilton's Bush Trust, and users of the reserve.
- ii. Facilitate further research to record the history of Otari-Wilton's Bush.

3.3.3.3 INTERPRETATION

- i. To provide on-site interpretation of important heritage features.
- ii. Incorporate the principles of Mātauranga Māori where appropriate and in consultation with the Wellington Tenth Trust and Te Runanga o Toa Rangatira.
- iii. Recognise the importance of Job Wilton's actions in preserving the Wilton's Bush area from 1860 to 1906.

3.3.4 IMPLEMENTATION (in priority order)

1. Work with Otari-Wilton's Bush Trust and iwi to collate and publish a history of Otari-Wilton's Bush.
2. Work with the Wellington Tenth Trust in identifying trees of significance and developing protocols to ensure appropriate rites and ceremonies are observed in the case of the tree falling.
3. Collaborate with the descendants of the Wilton and Curtis families with regard to exhibiting artefacts of interest from the Wilton Farmhouse and joint open days.
4. Engage an archaeologist to carry out an investigation identifying archaeological sites within Otari-Wilton's Bush and providing management recommendations for these; addressing the Burling House site as a priority. (see *Section 2.2.1 Historic Outline, pre-1847*).

5. A thorough assessment of the Otari-Wilton's Bush heritage values, including more recent cultural features, shall be carried out. A descriptive list and location map of all the items considered to have historic or cultural value shall be prepared and included in future management plans as an appendix. This shall be carried out as part of the asset management planning for the Garden. Assistance from local historians and the New Zealand Historic Places Trust shall be sought in preparing the list.



Waharoa (gateway) carved in totara by Bryce Manu of Te Atiawa

3.4 EDUCATION

Inspiring people to value and appreciate plant life and conservation is an important function of any Botanic Garden. As New Zealand's leading native botanic garden Otari-Wilton's Bush has a unique responsibility for inspiring people to value and appreciate New Zealand's native plants. Effective education and interpretation are essential ingredients for this inspiration.

3.4.1 ISSUES AND OPPORTUNITIES

Education themes

Education is about building awareness, knowledge, attitudes and skills. These aspects can be developed through a variety of means, from educational programmes and guided walks, to interpretative information. There are also a variety of target audiences for education programmes; from school students, to tertiary students, visitors, and home gardeners. Passive and active education should be carefully targeted to specific audiences. In other words, it is important to clearly identify which stories to tell, how to tell them, and who to tell them to.

The Information Centre (Te Marae o Tane) contains some interpretation, and there are interpretation signs around some areas of the forest (eg. the Canopy Walkway). However, there are currently limited facilities and resources for active educational programmes. In order for Otari-Wilton's Bush to reach its full potential these resource limitations will need to be addressed.

There is the opportunity for Otari-Wilton's Bush to become a hub for fostering appreciation of New Zealand's plants and natural heritage, including issues affecting natural heritage; as well as fostering an appreciation of the cultural heritage of Otari-Wilton's Bush. This can be done through providing a variety of learning experiences, interpretation, involving iwi, and the provision of appropriate facilities.

The *plant collections* present unique educational opportunities, and appropriate interpretation and education themes are around conservation, distinctiveness of New Zealand's plants, plant biogeography, evolution, ecological associations of plants, uses of native plants, botany, horticulture, plant identification, demonstrating the use of native plants in gardens, rongoa maori and traditional uses of plants. Audiences range from visitors, to schools, tertiary institutions, horticultural and botanical organisations, and home gardeners. Educational tools include programmes, guided walks, lectures, propagation demonstrations, and interpretation.

The *natural ecosystems* (the forest and the streams) that can be experienced in Otari-Wilton's Bush are of special educational value because they are so close to the city. Appropriate education themes are ecology, biodiversity, pest plants and animals, conservation and sustainability, matauranga maori, and stream health. There are many opportunities to utilise different educational tools, for example, experiential programmes (eg. tree planting, weeding, propagating), guided walks, lectures, interpretation and self-guided walks.

Cultural heritage is another important aspect of Otari-Wilton's Bush. Appropriate themes are around the built heritage, early through-routes, Maori occupation, early European settlers, Job Wilton and Wilton's Bush, and the curatorial history of Otari-Wilton's Bush. Specific notable sites and relics will also be appropriate for interpretation eg Wilton's dray road, memorial gates, Cockayne's grave and historic plantings.

Research

Otari-Wilton's Bush also functions as a research resource for tertiary institutions and specialist organisations (eg conservation and horticultural). The plant collections and forest area are a resource for horticultural, botanical and ecological studies, as well as for research on traditional uses of plants (eg medicines, weaving). The knowledge of staff is also a significant part of Otari-Wilton's Bush research role. For example, staff expertise in horticulture and botany means that propagation and cultivation techniques can be developed for plants not usually cultivated. This is particularly important for conservation plant recovery programmes.

3.4.2 GOALS AND OBJECTIVES

To promote understanding and appreciation of New Zealand plants and natural heritage through education and interpretation by:

1. Providing a variety of learning experiences to facilitate understanding and appreciation of New Zealand's native plant taonga (treasure).
2. Telling the stories of New Zealand's natural heritage and plant taonga through effective interpretation.
3. Inviting the involvement of Mana Whenua and other Maori groups in all interpretation and education programmes
4. Encouraging the use of native plants in private and public gardens.
5. Providing facilities which enhance visitor enjoyment and appreciation
6. Targeting education and interpretation for the following groups:
 - a. Schools (primary, secondary, kohanga, and kura)
 - b. Tertiary institutions
 - c. Casual visitors to the reserve
 - d. Home gardeners
 - e. Professional users (eg landscape architects and designers)
7. Demonstrating the importance of native plants in ecosystems – including relationships with animals.

3.4.3 POLICIES

3.4.3.1 GENERAL PRINCIPLES

- i. Education programmes will centre on the themes as described in Section 3.4 around New Zealand's native plant taonga and the plant collections of Otari-Wilton's Bush, New Zealand's natural heritage, and the cultural heritage of Otari-Wilton's Bush.
- ii. Mana Whenua shall be invited to have input to and involvement in all education and interpretation programmes. Where appropriate, input from other Maori groups shall also be sought.
- iii. Education programmes, including interpretation, will provide for a range of audiences and these shall be clearly identified prior to their inception.
- iv. All education and interpretation programmes will be reviewed regularly and refreshed as required.
- v. Volunteers may assist in delivering and providing education services and programmes.
- vi. Education programmes will be developed and implemented in liaison with other relevant organisations where possible.
- vii. Any person undertaking research or the collection of material within Otari-Wilton's Bush must first obtain the written permission of the curator/manager.

3.4.3.2 INTERPRETATION, SIGNS AND LABELLING

- i. Plant labelling in the forest education zone (refer to *Policy 3.2.3.1 (iii)*) shall be maintained to a level to encourage visitors to teach themselves plant naming skills, as well as to inform and educate casual visitors. Labelling will be no less than plant labels for one of each common plant encountered in the forest education zones.
- ii. Interpretation signs shall be professionally presented and in accordance with the Wellington City Council Otari-Wilton's Bush branding standard.
- iii. Interpretation signs shall be designed to target specific audiences.
- iv. Interpretation signs shall be available for each plant collection with a principal theme (see *Policy 3.1.3.1 (viii)*).

3.4.3.3 ADVISORY INFORMATION

- i. All brochures shall be produced in accordance with Wellington City Council publication standards, and include the Otari-Wilton's Bush brand identifier.
- ii. Self-guiding brochures shall be available to the public for free and shall be consistent with those themes identified in *Section 3.4.1*.
- iii. Whenever appropriate, staff will take the opportunity to provide botanical and horticultural advice to the public, eg through newspaper articles, one-on-one advice.
- iv. Staff will endeavour to provide informative and professional guidance to specialist groups where specific knowledge of the scientific and horticultural resources of Otari-Wilton's Bush is required; this includes to tertiary groups.
- v. The investigation of alternative forms of advisory information (eg web-based information) will be supported where staff resources allow.

3.4.3.4 COMMUNITY EDUCATION PROGRAMMES

- i. Regular community education programmes will be provided. These may include guided walks, open days, planting advice and seminars.
- ii. Support for the guided walks led by the Otari-Wilton's Bush Trust will continue.
- iii. Requests for community education programmes will be received in writing and their merit assessed by staff. Their approval will be at the discretion of the Curator/Manager.
- iv. All community education programmes will be evaluated to assess participant's needs and expectations.

3.4.3.5 SCHOOL EDUCATION PROGRAMMES

- i. Any primary and secondary school resources will link with school curriculum guidelines.
- ii. Opportunities for hosting regular school education programmes shall be actively sought.
- iii. Staff will be available to help coordinate school education programmes, but will not generally be available to run the programmes.

3.4.3.6 TRAINING AND DEVELOPMENT

- i. Otari-Wilton's Bush will continue to be supportive of apprenticeships and internships of both national and international students learning about the cultivation of New Zealand's flora.
- ii. Otari-Wilton's Bush will promote itself as a suitable place for international and national apprenticeships and internships.
- iii. Internships shall be voluntary, and shall be of a short term nature, usually no longer than three months in duration.
- iv. Otari-Wilton's Bush will seek to provide accommodation for international internships.
- v. Otari-Wilton's Bush will continue to be an integral part of the wider Parks and Gardens horticultural apprenticeship training resource.

3.4.3.7 REFERENCE LIBRARY

- i. Use of the reference library shall generally be restricted to staff and Otari-Wilton's Bush Trust but members of the public may use it for reading and research on application to the Curator/Manager.
- ii. Material shall not be removed from the reference library.

3.4.4 IMPLEMENTATION (in order of priority)

1. Investigate the need for an Education Officer or similar to coordinate Otari-Wilton's Bush educational programmes and resources, and implement findings of the investigation as appropriate.
2. Full investigation into optimising existing covered built areas available for educational purposes, including consideration of the utilisation of the Curator's House or reconfiguration of the current Information Centre; considering the option of expansion – this is to be implemented through the Landscape Development Plan. (see *Section 3.7.1*).
3. Plant labelling implemented in educational zones of native forest (refer to *Section 3.2.3.1*) as specified in *Policy 3.4.3.2 (i)*.
4. Interpretation Plan further developed that recognises the educational themes listed in *Section 3.4.1* above, and that incorporates the opportunities for story telling identified through the Landscape Development Plan (see *Section 3.7.1*). Interpretation may be located within education facilities or near to the item of interest. Consideration must be given to:
 - (a) Plant collection themes listed in *Section 3.1*, and interpretation requirements for collections (see *Policy 3.1.3.1 (viii)*).
 - (b) Natural ecosystems and forest management zones (see *Policy 3.2.3.1 iii*)
 - (c) Cultural heritage (see *Section 3.3*).
5. Continue to develop and provide web-based plant information to both on-site visitors and off-site internet users.
6. Enhance reference library by recording and documenting all resources in an easily accessible manner.

RECREATION AND ACCESS

Otari-Wilton's Bush is a recreation destination for people from the Wellington region, the local community, and for tourists. The most popular activities are walking, running, sight-seeing and picnicking. A range of pedestrian experiences are offered, from the well used and maintained Circular Walkway, to the more 'rugged' routes of the yellow, red and blue trails. There are also major links to the Outer Green Belt, Johnston's Hill Reserve and Karori Cemetery.

3.5.1 ISSUES AND OPPORTUNITIES

Access

The Council aims to ensure that Wellington offers a diverse range and an abundance of quality recreation and leisure activities that are easily accessed, and that access to open space and reserves is maintained and enhanced. Efforts have been made to ensure that Otari-Wilton's Bush is accessible for all, but there is room to further extend these opportunities, particularly access for wheelchair users and prams.

The Council also aims to link vegetation corridors, ridgelines and coastal escarpments to form natural recreation resources. Otari-Wilton's Bush is a hub to two key natural linkages; the Kaiwharawhara Stream link, and the Outer Green Belt Skyline track. The Kaiwharawhara Stream link is a visionary access way from the mouth of the Kaiwharawhara River, up Ngaio Gorge through Trelissick Park, through Otari-Wilton's Bush and ending at Karori Wildlife Sanctuary. The Skyline Track runs along the top of the Outer Green Belt management area, from south Karori, to Mt Kaukau. Otari-Wilton's Bush provides access points, as well as a recreational node, for both of these linkages. Recreational resources must take these key functions into account.

Recreational use

Currently, use is restricted to pedestrian activities. Otari-Wilton's Bush is identified as closed to mountain biking in Council's Mountain Bike Policy in light of potential environmental impact and social conflict. Dog walking (on leash only) is also allowed, however the presence of dogs off leash and people not picking up dog droppings are issues.

A recent survey of users of Otari-Wilton's Bush¹ found that the majority of people (47%) stated walking and jogging as the main purpose of their trip. Sight-seeing was the next most stated reason (22%), followed by walking the dog (11%). A small percentage of these people visit every day (3%), some visit several times per week (17%), and others visit 2-6 times per year (21%). For 17% of people, it was their first visit to the reserve.

The recreational use of Otari-Wilton's Bush needs to be balanced to ensure that neither the environment nor the visitor's experience is degraded. This extends to events held at Otari-Wilton's Bush. Only those recreational opportunities that utilise and protect the natural environment and collections of Otari-Wilton's Bush will be permitted, and impacts will be managed through policies such as allowing only low impact recreational activities (i.e. pedestrian based), and by specifying appropriate track types.

This management plan proposes the inclusion of the Wilton Park area (see *Section 3.7.1 Boundary Management and Land Acquisition*). This area includes a sportsfield which provides for a different group of users and has a separate entrance and no linkages with Otari-Wilton's Bush. This sportsfield will continue to be managed with regard to Parks and Gardens Asset Management Plans and policies.

¹ Otari-Wilton's Bush 2006 Survey, Wellington City Council.

3.5.2 GOALS AND OBJECTIVES

To provide recreational opportunities for experiencing New Zealand's unique flora and natural heritage, and ensuring that these experiences are accessible to all by:

1. Providing for a range of recreational experiences; from backcountry routes to easily accessible paths.
2. Promoting recreational activities and events which are in keeping with the natural and peaceful environment of Otari-Wilton's Bush.
3. Maintaining links with the Outer Green Belt, Kaiwharawhara Stream and the reserve network.

3.5.3 POLICIES

3.5.3.1 General recreation

- i. Public entry for non-commercial use to Otari-Wilton's Bush shall be free of charge (see *Section 3.7.3* for policies on commercial activities).
- ii. Tracks, facilities and signage, will facilitate safe and non-conflicting recreational experiences.
- iii. Tracks, facilities and signage, will protect natural and cultivated resources and promote environmental awareness.

3.5.3.2 Recreation activities - restricted

- i. Public access to part or whole of the reserve may be restricted for management purposes.
- ii. Dogs are permitted within Otari-Wilton's Bush but the following restrictions apply:
 - (a) Dogs must be kept on a leash and controlled by their owners or responsible accompanying person.
 - (b) Owners or responsible accompanying person must remove all dog droppings from Otari-Wilton's Bush and place in rubbish bins or remove from the site.
 - (c) Dogs may be restricted from entering high use areas such as picnic sites during peak use periods at the discretion of the manager/curator.
- iii. Bookings for weddings or other large social gatherings and events, including educational visits, must be made through the Otari-Wilton's Bush event booking system in order to ensure that there are no conflicts of use and that they do not interfere unduly with normal public use. In some circumstances a bond may be required (see *Section 3.7.3* for details on commercial use).
- iv. Portable gas barbecues may be allowed with the prior permission of the Curator/Manager.

3.5.3.3 Recreation activities - not permitted

- i. Activities which are detrimental to or in conflict with the natural, historic and general peaceful values of Otari-Wilton's Bush are not permitted.
- ii. Trail bikes, mountain bikes and other wheeled vehicles are not permitted into the reserve beyond the carparks, except authorised utility vehicles, prams, push chairs, wheelchairs and mobility scooters only.
- iii. Fires are prohibited (except if authorised by Wellington City Council for management purposes).
- iv. Camping is prohibited.
- v. Firearms and shooting are prohibited at all times (except if authorised by Council for management purposes).
- vi. All livestock and domestic animals, with the exception of dogs on leads are prohibited in Otari-Wilton's Bush.

3.5.3.4 Access Points, Signs and Tracks

- i. Access points will be maintained and developed as follows:

- (a) Main access points
 - Information Centre - Te Marae o Tane Entrance, Wilton Road (car park)
 - Banks Entrance, Wilton Road (pedestrian)
 - North Picnic Area, Churchill Drive (car park)
- (b) Secondary access
 - John Witton Drive, Chartwell (limited parking)
 - Ian Galloway Park, Wilton Road (limited parking)
 - Job Wilton Memorial Gate, Wilton Road (pedestrian)
- (c) Other
 - Links with tracks from Karori Cemetery and - Johnston's Hill Reserve (pedestrian)
 - Links with the Outer Green Belt Skyline track (pedestrian)
- ii. Tracks will be at appropriate grades and specifications (as per the Open Space Access Plan guidelines), and cause minimum impact to the forest ecosystem and individual trees, and will provide:
 - (a) Access through the garden areas to enable easy plant viewing (*graded to Path specifications*)
 - (b) Access to picnic sites, scenic vantage points, heritage sites (*graded to Short Walk specifications where topographically possible*)
 - (c) Access between the garden areas and the Wilton Road carpark (*graded to Path specifications*)
 - (d) Loop trails from main suburban entrances (*graded to Walking Track specifications*)
 - (e) Links to the Outer Green Belt Skyline Track (*graded to Tramping Track specifications*)
- iii. The Circular Walk, Nature Trail and access alongside Kaiwharawhara Stream to Ian Galloway Park will be specifically maintained as the primary high use tracks, with particular consideration to the educational role of the Nature Trail and Wilton Park area.
- iv. An upgrade and maintenance programme will be developed and implemented in order of priority based on usage and need, and in accordance with the Open Space Access Plan and Parks and Gardens Asset Management Plans.
- v. All new tracks must be consistent with the goals, objectives and policies of this management plan and approved by the Curator/Manager.
- vi. Before any new tracks are created, or existing tracks upgraded, full consideration must be given to:
 - (a) User demand
 - (b) Environmental impact
 - (c) Risks created (eg illegal mountain biking access)
 - (d) Track function (eg education, heritage appreciation)
- vii. Existing tracks (both open and closed) will be promoted or upgraded to cope with increased visitor pressure in preference to forming new tracks.
- viii. Those tracks which offer wheelchair access and easy gradient walking will be clearly identified in publicity material and on-site information.
- ix. Clear maps of tracks will be provided at major access points, the Troup Picnic Area and Ian Galloway.
- x. Clear reserve entry signs will be provided at all access points.
- xi. Consideration will be given to featuring the path names commemorating well-known botanists as bestowed by Cockayne (refer to Appendix 4).
- xii. Recognition and preference shall be given to maintaining and developing links to nearby reserves, specifically to Trelissick Park and Karori Wildlife Sanctuary.

3.5.3.5 Facilities

- i. The current picnic areas (the Troup Picnic Area and North Picnic Area) will be maintained and upgraded, including the erection of structures and maintenance of barbeque facilities in accordance with user need and in a manner that does not compromise the natural beauty of the area. See also Section 3.7.6 Facilities.
- ii. A new South Picnic Area adjacent to the Kaiwharawhara Stream and Project Kaiwharawhara planting area (within 'Wilton Park' acquisition area) shall be maintained in accordance with user need and in a manner that does not compromise the natural beauty of the area.

3.5.3.6 Sports ground

- i. Wilton Park sports field will continue to be managed in accordance with the Parks & Gardens Asset Management Plan and shall remain as Recreation Reserve.

3.5.4 IMPLEMENTATION (in priority order)

1. To develop the circular walkway so that the lower section is accessible to prams, push chairs and wheelchairs from the North Picnic Area car park.
2. Provide access to the Outer Green Belt Skyline Track, and highlight the circular routes already in place.
3. Advocacy and signage advising dog walkers of their responsibilities, and mountain bikers that the area is closed to mountain biking.

3.6 MARKETING AND PROMOTION

In 2004 a Marketing Strategy and Brand Concept Development report² was prepared for Otari-Wilton's Bush. This was developed in order to move towards positioning Otari-Wilton's Bush as a national and international destination.

The Marketing Strategy and Brand Concept Development report identifies four key steps for Otari-Wilton's Bush; (1) gain greater public visibility, (2) to position itself as a lead organisation, (3) to create specific visitor and audience objectives and targets, and (4) to build a network of relationships.

3.6.1 ISSUES AND OPPORTUNITIES

Greater visibility

Identifying what Otari-Wilton's Bush is to excel at and be known for is the first step towards increasing its visibility. The vision identified through this Management Plan recognises what makes Otari-Wilton's Bush unique and describes what staff and the community wish Otari-Wilton's Bush to be known for. The vision recognises two distinct roles, one is to inspire visitors to value and appreciate New Zealand's native plant taonga (treasure), and the second is to provide a window into and experience of New Zealand's natural heritage through a unique combination of cultivated gardens and original and regenerating forest. Essentially, these are the 'products' of Otari-Wilton's Bush. Any branding and promotion should focus on these aspects.

Leadership position

The Marketing Strategy and Brand Concept Development report³ recommends that Otari-Wilton's Bush acts and thinks like a national organisation and that it takes a leadership position in the public eye, for example, Otari-Wilton's Bush could become the place people first think of when they want to know about native plants. Opportunities for doing this are to build relationships with national agencies (eg conservation and research organisations), seek opportunities for national and international positioning (eg Garden of National Significance), position staff as experts in their relevant fields, seek out relevant media opportunities, and look for opportunities to facilitate national networks.

Visitor targets

The importance of clearly targeting audiences was discussed with regard to education (see *Section 3.4.1*). For marketing and promotion it is equally important. As with education, there are a number of potential target groups: Wellingtonians, national tourists, international tourists, specialist tourist groups (eg. nature based tourism). Further research into visitor groups needs to be carried out, and clear targets set.

Relationships

A network of strategic relationships will play a strong role in positioning and enhancing Otari-Wilton's Bush. These relationships may be internal, for example with Recreation Wellington, or external. The relationship with the Otari-Wilton's Bush Trust is a good example of the importance of external relationships, where the Trust is a key partnership and has been supporting Otari-Wilton's Bush in many ways including funding, assistance with programmes and volunteer work.

² Carr, Gisella (2004). Otari-Wilton's Bush Marketing Strategy and Brand Concept Development: Recommended Actions. Unpublished report prepared for Wellington City Council, December 2004.

³ Ibid.

These relationships will function at different levels; they may be advisory, they may be about improving networks and linkages, recognising and capitalising on common interests, or they may offer more hands-on involvement eg. fundraising, working bees.

Stakeholders or potential stakeholders with whom Otari-Wilton's Bush should recognise, foster and formalise relationships include:

- Otari-Wilton's Bush Trust
- The Wellington Tenth's Trust and Te Runanga o Toa Rangatira.
- Volunteers and local community
- Specialist organisations (eg. Te Papa, New Zealand Plant Conservation Network, Historic Places Trust, Tapu te Ranga ethno-botanical gardens, Landcare Research, Sports and Recreation New Zealand, public or private threatened plant collections)
- Central and local government agencies (eg. Department of Conservation, Greater Wellington Regional Council)
- Education institutions (eg. Otari School, Victoria University of Wellington)
- Allied local organisations (eg. Karori Wildlife Sanctuary Trust, Trelissick Park/Ngaio Gorge Working Group, Otari Wilton Environment and Heritage Protection Society, Wellington Botanical Society, Friends of Wellington's Botanic Gardens)
- Tourism organisations (eg. Positively Wellington Tourism)

3.6.2 GOALS AND OBJECTIVES

To promote Otari-Wilton's Bush as a nationally and internationally unique opportunity to experience New Zealand's flora by:

1. Actively promoting Otari-Wilton's Bush as a top destination for international and domestic visitors.
2. Actively promoting Otari-Wilton's Bush as an inspirational place to go to experience and learn about New Zealand plants.
3. Increasing the number of Wellingtonians who know about Otari-Wilton's Bush
4. Increasing the number of Wellingtonians visiting Otari-Wilton's Bush.

To work with botanical, research and conservation organisations to share knowledge and promote the values of New Zealand's native flora by:

1. Developing and maintaining relationships with key organisations.
2. Promoting the natural and knowledge-based research resources available at Otari-Wilton's Bush.
3. Collaborating with conservation organisations in promoting values of New Zealand's flora and participating in joint programmes where appropriate.

3.6.3 POLICIES

3.6.3.1 Visibility

- i. Whenever possible and appropriate, staff will take the opportunity to promote New Zealand flora and Otari-Wilton's Bush through relevant media.
- ii. Otari-Wilton's Bush will be actively promoted as a tourist destination with relevant tourism bodies both internationally, nationally and locally.
- iii. Opportunities for promoting Otari-Wilton's Bush as an education and recreation destination for Wellingtonians shall be actively sought.

3.6.3.2 Leadership

- i. Strategic relationships with botanical, research and conservation organisations shall be actively sought and maintained, with priorities on information sharing partnerships and collaborative plant conservation programmes.

- ii. Whenever possible and appropriate, opportunities will be taken to promote staff knowledge and expertise in native flora to external groups and general public.

3.6.3.3 Visitor targets

- i. Promotional activities shall be targeted to specific audiences and evaluated and reviewed against their expected outcomes.
- ii. Promotional activities may include commercial interest, for example specialised guided tour packages which are booked and paid for. These shall not be inconsistent with the Reserve status of Otari-Wilton's Bush and should be developed in conjunction with key partners.

3.6.3.4 Relationships

- i. Relationships with volunteers, community and relevant organisations shall be actively fostered and managed.

3.6.4 IMPLEMENTATION (in priority order)

1. Develop a Relationship Management Plan including, but not limited to, those organisations listed in Section 3.6
2. Form Memorandum's Of Understanding with key partners, including Otari-Wilton's Bush Trust, to build a shared understanding of expectations and responsibilities.
3. Develop a detailed Marketing and Promotion Strategy unique to Otari-Wilton's Bush and based on the recommended actions from the Carr (2004) report. Key messages must be consistent with the vision for Otari-Wilton's Bush, include specific audience objectives and strategies and the evaluation of these. The focus will be on strategies for promoting the 'products' and 'services' unique to Otari-Wilton's Bush. It must be unique to Otari-Wilton's Bush but consistent with Wellington City Council standards, with Parks and Gardens Business Plan, and with the integrated promotion of the Botanic Garden Cluster.
4. Liaise with Karori Wildlife Sanctuary and other relevant nature based tourism ventures and open space attractions over opportunities for collaborative promotion and tourism activities.
5. Investigate public transport options from Karori, including public transport links with Karori Wildlife Sanctuary.
6. Investigate opportunities for an improved web presence for tourism
7. Investigate opportunities for commercial guided tour packages.
8. Investigate product development opportunities for Otari-Wilton's Bush eg. endangered plants for home gardens, native plant guides.

3.7 MANAGEMENT AND ADMINISTRATION: ISSUES, OPPORTUNITIES AND POLICIES

The policies in this section deal with administration and a range of issues, including policies which span matters set out in the previous section.

3.7.1 LANDSCAPE DEVELOPMENT PLAN

In the preceding sections there has been discussion around the need for creating a sense of continuity between the forest and the plant collections (see Section 3.1), the need for improved education and interpretation facilities (see Section 3.4.1) and the need for recreation links (see Section 3.5.1). In order to tie each of these needs together into a cohesive experience of Otari-Wilton's Bush, a Landscape Development Plan is required.

The Landscape Development Plan will set out the overall concept for the development of the area, including main character areas, key focal points, the track network and location of functional uses such as visitor and management facilities. It will include consideration of the following issues:

- How well existing buildings and facilities meet current usage and future needs, including an assessment of the best use of the Curator's House, and a feasibility study for a café (see Education *implementation* 3.4.4 (2) and *Facilities* Section 3.7.6).
- Relationships within the site such as track connections, visitor and management facilities, the plant collections and forest, and key focal points (for example see *Policy* 3.5.3.4 ix).
- Opportunities for leading visitors through the different stories of Otari-Wilton's Bush (see *Section* 3.4.1).
- Opportunities for extension of the track network in accordance with the priorities detailed in this plan (see *Section* 3.5.4).
- Principles of sustainability; making efficient use of energy, water, and other resources.

The Landscape Development Plan will ensure that the development of Otari-Wilton's Bush is carried out in a consistent manner in accordance with the goals, objectives and policies set out in the management plan.

3.7.1.1 POLICIES

- i. The Landscape Development Plan shall be notified for public comment.
- ii. The Landscape Development Plan shall be consistent with the findings of Collections Review (see Section 3.1.1).
- iii. The Landscape Development Plan shall be consistent with the goals, objectives and policies set out in this management plan.
- iv. The Landscape Development Plan shall give full consideration to those issues listed in *Section* 3.7.1 above.
- v. The Landscape Development Plan shall incorporate principles of sustainability, including consideration of energy efficiency in building design, water conservation, and low impact stormwater management.

3.7.1.2 IMPLEMENTATION

1. Prepare and implement a comprehensive Landscape Development Plan for Otari-Wilton's Bush, giving consideration to the above policies.

3.7.2 BOUNDARY MANAGEMENT AND LAND ACQUISITION

It is important that land adjacent to Otari-Wilton's Bush is managed in a compatible manner for the protection of the natural and cultural values of the area.

The major parcels of land which bound the reserve are:

- 'Wilton Park' Recreation Reserve to the south – this runs alongside the Kaiwharawhara Stream to Ian Galloway Park and is a key restoration site.
- Karori Cemetery to the south-west.
- Wellington City Council owned pine/native block to the south-west.
- Outer Green Belt 'skyline' to the west.
- 'Ex-Transpower' land to the north-east, currently Department of Conservation stewardship land.
- Wilton Bowling Club (Open Space A - Recreation Reserve).
- Private land (medium to low density housing) to the east.

This management plan recommends that 'Wilton Park' recreation reserve (aside from the area of sports field) is reclassified as Scenic Reserve and incorporated into the Otari-Wilton's Bush management area. The area is already perceived to be part of Otari-Wilton's Bush and staff time goes into the management of this area. In addition it is contiguous with Otari-Wilton's Bush and helps create the Otari-Wilton's Bush Kaiwharawhara Stream biodiversity pocket, it is a key recreational access route, and its environment is in keeping with the rest of Otari-Wilton's Bush. This is consistent with the recommendations of the Outer Green Belt Management Plan (2004). Policies applying to this additional area would be consistent with those described in this management plan. It should be noted that this area already sits within Wellington City Council management.

The *Skyline Track*, and '*ex-Transpower Land*' currently remain distinct to Otari-Wilton's Bush, being more closely associated with the Kilmister Tops and Outer Green Belt experience. However, this may be reviewed in the future as visual continuity strengthens. Currently, management at the interface of these areas should not be inconsistent with the policies for the management of natural areas outlined in this management plan.

The *Wellington City Council owned pine/native block* to the south-west also acts as a buffer. Additional resources would be required for this to be added to Otari-Wilton's Bush, including managing the current pine forest and pest populations. It is recommended that over next 10 years it is managed by the Parks and Gardens Business Unit as a buffer – in accordance with the Outer Green Belt Management Plan. Its practicability as an addition to Otari-Wilton's Bush will be considered in the next management plan review.

The land on which the *Wilton Bowling Club* (122 Wilton Road) sits was sold to the Wellington City Council by the Curtis family in 1950 for the purposes of creating a bowling green. The first green was open for play in 1951 and the first lease was established with the Wilton Bowling Club. A second green was opened in 1955. In 1989 the Wilton Bowling Club applied to the Wellington City Council to use part of Otari-Wilton's Bush to accommodate a third bowling green. This was granted, and in 1992 a 0.2824 hectare area was reclassified from Scenic Reserve to Open Space A - Recreation Reserve. The Wilton Bowling Club lease was renewed in 1994, and again in 2002. This current lease expires in 2012, with a right of renewal for a further 10 years (less one day). When this right of renewal term has been fulfilled, or should the lease be otherwise terminated in accordance with the Lease Agreement, then the normal process for lease renewal will be followed in accordance with the Council's Leases Policy for Community and Recreational Groups (2001). Part of this process includes consideration of the following assessment criteria: strategic fit and activity sustainability. Unless there is evidence that these are not met to a significant extent a fresh lease will be available to the lessee. In

the event that the lessee cannot provide sufficient evidence to meet the above criteria or elects not to renew their lease then consideration of the area as an addition to Otari-Wilton's Bush should be considered with regard to its potential to act as a buffer to the Wilton's Bush forest remnant, and as a potential space to enhance public benefit and enjoyment of the reserve. At the time of the lease renewal process, public consultation of the use of this land will be required in accordance with the Reserves Act (1977).

The *private land and houses* to the east all have potential to impact on Otari-Wilton's Bush, and opportunities to educate the residents about 'good neighbour' behaviour should be sought.

3.7.2.1 POLICIES

- i. Continuity of conservation management on lands adjacent to Otari-Wilton's Bush will be sought.
- ii. Council shall seek the co-operation of adjacent land owners and occupiers in the compatible management of their land, in particular with respect to animal and plant pest control, regeneration, riparian protection and fire control.
- iii. Those portions of Otari-Wilton's Bush identified in this management plan for inclusion to the management area as Scenic Reserve (see Appendix 1) shall be gazetted as part of Otari-Wilton's Bush Scenic Reserve.

3.7.2.2 IMPLEMENTATION (in priority order)

1. The addition of road reserve contiguous with Otari-Wilton's Bush (CT D1/75, ex-Curtis estate) off Churchill Drive to Otari-Wilton's Bush shall be investigated.
2. Gazette the additional areas identified in this management plan as Otari-Wilton's Bush.

3.7.3 FUNDING AND SPONSORSHIP

Otari-Wilton's Bush is managed as part of the Wellington Botanic Garden cluster, and sits within the Parks and Gardens Open Space Asset Management Plan. The collective management of the Gardens is to help rationalise management practices and optimise their close relationship. All four gardens have significant conservation, heritage and recreational value and it is intended that they be managed and promoted to provide complementary interest and attractions. Funding for each is influenced by overarching strategies (eg Capital Spaces, Recreation Strategy), relevant management plans, implementation plans, and formalised through the Long Term Council Community Plan and annual planning process.

There is potential for Otari-Wilton's Bush, in liaison with its key partners, to seek funding through other sources for special one-off projects. This should be encouraged where appropriate and possible.

Any sponsorship opportunities must be in accordance with the Wellington City Council Sponsorship standards.

3.7.3.1 POLICIES

- i. Sponsorship agreements shall be subject to the conditions set out in the Wellington City Council Sponsorship Standard and shall ensure that:
 - (a) The reputation of potential sponsors is not in conflict with the goals of Otari-Wilton's Bush and the particular project.
 - (b) On-site advertising of the sponsorship is discrete and does not compromise the character of the surrounding area(s).
- ii. The potential for funding from grants shall be considered for special projects as they arise.

3.7.3.2 IMPLEMENTATION

1. A long term sponsorship programme and potential grant application for supplementary funding and special projects shall be developed in conjunction with developing a marketing strategy (see *Section 3.6*).

3.7.4 COMMERCIAL ACTIVITIES

There are two kinds of potential commercial activities for Otari-Wilton's Bush, those that add to the services provided by the reserve, and those that capitalise on the products of the reserve.

Those commercial activities that add to the services provided by the reserve, have potential to add value to the reputation of Otari-Wilton's Bush, for example, commercial specialist guided tours will add value to it as a tourism destination. However, these commercial enterprises must not conflict with its Scenic Reserve status, nor the vision and goals for the reserve. In addition, they must be developed only through consultation with the reserves volunteers and key allies. Permanent or temporary refreshments for visitors may be another example of appropriate commercial use that would enhance the public's benefit and enjoyment from the reserve.

Those commercial activities that capitalise on the products of the reserve, for example, commercial nurseries harvesting seed, will only be permitted if it can be proven that they are for public good rather than private gain (eg research purposes) and will be granted at the discretion of the Curator/Manager.

3.7.4.1 POLICIES

- i. Commercial uses that provide a service or attraction to the public may be permitted at the discretion of the Curator/Manager, provided that they contribute to the public use and enjoyment of the area and do not conflict with its role.
- ii. Commercial uses that make use of the facilities may be permitted at the discretion of the Curator/Manager provided that they are not in conflict with heritage conservation values and vision of the area and do not significantly interfere with normal public use.
- iii. Commercial uses that capitalise on the products of the reserve (eg commercial nurseries harvesting seed), will only be permitted if it can be proven that the uses are for public good rather than private gain. These may be permitted at the discretion of the Curator/Manager.
- iv. Short-term commercial uses may be granted at the discretion of the Curator/Manager, where short term is defined to be 6 or less consecutive days).
- v. Concession fees shall be charged for all commercial operations.
- vi. No commercial tourism operation shall claim to be the foremost, primary or authorised tour or interpretive service for any part of Otari-Wilton's Bush.
- vii. The Curator/Manager, as a condition of the concession, shall approve the information and interpretation content of tours by commercial operators.
- viii. Commercial filming or photography may be permitted at the discretion of the Curator/Manager when it does not interfere with normal public use, or with staff operations, and is not detrimental to heritage conservation values. A permit will be issued and fee will be charged in accordance with Council policy for filming on Council reserves and a bond may be required.
- ix. Concession applications for all other types of commercial use, including trial permits, appropriate to the role of Otari-Wilton's Bush will be considered under Section 56 of the Reserves Act 1977 (this requires public notification and the consent of the Minister of Conservation).

3.7.5 AVAILABILITY OF PLANT MATERIAL

Seeds and cuttings are sought from the plant collections and forest area by researchers, conservation groups and home gardeners, as well as commercial nurseries. Whilst Otari-Wilton's Bush has a role to encourage the public to make use of native plants, the relevant provision of the Reserves Act 1977 (Section 49: Taking of Specimens) must also be taken into account. In addition the propagation work of Otari-Wilton's Bush must not be hindered. Uncontrolled collection of plant material could put some rare plant or propagation programmes at risk. It is therefore more efficient to continue to provide the general public with material on specified 'open days'. In addition, care must be taken in relation to certain restricted material collected under permit from areas administered by the Department of Conservation. Such restricted material or derivatives may not be distributed for commercial use.

3.7.5.1 POLICIES

- i. All requests for plant material must be approved by the Curator/Manager.
- ii. Restricted material collected from Department of Conservation areas will not be provided for commercial use.
- iii. Promotional 'open days' will continue when practical, as a way of making native plant and seeds, and in particular those of uncommon species, available to the public.
- iv. Members of the public requesting plant material for home garden use will be encouraged to instead attend Otari-Wilton's Bush 'open days'.
- v. Seed and plant material availability will not be generally advertised to the public, with the exception of 'open days' (see above).
- vi. Requests for plant material will be treated as follows:
 - (a) Requests are subject to availability of plant material and will be granted at the Curator/Manager's discretion.
 - (b) Plant material for commercial purposes and home use will incur charges.
 - (c) Plant material will be free for research with no commercial applications, education, cultural and conservation purposes.
 - (d) Maori requesting plant material for non-commercial use will in the first instance be offered seeds or propagating material from which to cultivate their own supplies. The exception is the cultural harakeke collection – refer to Policy 3.1.3.1 (xi).

3.7.6 FACILITIES

The Information Centre (Te Marae o Tane) is the current primary facility. This is a two storey building, including an interpretation area, a meeting room, staff offices, and public toilets; there are also garages for equipment storage at ground level.

For Otari-Wilton's Bush to fulfil its educational role, more space is required. The

Curator's House may present one opportunity to meet these needs. Currently the Curator's House is used as a Parks and Gardens private residence. There is potential to convert this building into a use better suited to the Reserve's purpose; such as education facilities (eg classroom, larger meeting area), or for administrative purposes. This use will need to be carefully assessed as part of the Landscape Development Plan (see Section 3.7.1). In addition, a predicted increase in visitor numbers will put added pressure on current facilities; again this should be assessed as part of the Landscape Development Plan.

A café located in one of the current buildings on the reserve could also be an effective utilisation of space and improve visitor's experience.

The challenge will be integrating existing and future facilities into a cohesive Otari-Wilton's Bush experience, and this will be addressed by the Landscape Development Plan.

Other facilities, such as picnic tables, shelters and barbeques, are an important part of enhancing the visitor experience, and Otari-Wilton's Bush will aim to provide these as required and in response to public demand. Any such facilities will be in keeping with the purpose of the Reserve and complementary of the surrounding environments and that will not compromise or harm the natural environment.

In addition, the Council aims to provide clean, well-maintained public conveniences that are accessible, safe and strategically situated. The methodology for achieving this is set out in the *Public Conveniences (Wharepaku) Policy 2002*. Public conveniences are managed under the Public Conveniences and Pavilions Asset Management Plan.

3.7.6.1 POLICIES

- i. The Information Centre and public education space may be hired for appropriate private functions and uses after normal closing times, and bookings made through the Otari-Wilton's Bush booking system. Bookings for conservation and educational activities will be favoured.
- ii. Hiring of the facilities shall be charged at publicly notified market rates.
- iii. Provision of facilities that enhance visitor experience (eg picnic tables, rubbish bins, shelters) will be built in already cleared areas and where there is demand for them.
- iv. Facilities shall be in keeping with the surrounding environment and landscape and shall be as consistent in appearance as possible.
- v. Council shall maintain all reserve toilets in a clean and hygienic state in keeping with the expectations of the users of these reserves by ensuring that the toilets are cleaned in accordance with their frequency of use and maintenance contracts.
- vi. Public convenience sites shall be managed in accordance with the Council's Public Conveniences Policy. They will be safe and secure, located near to adjacent pedestrian paths, roads and facilities with entrances facing onto active spaces and considerate of surrounding vegetation.

3.7.6.2 IMPLEMENTATION

1. Landscape Development Plan (see Section 3.7.1) to include a Facilities Needs Assessment and how facilities are integrated into a cohesive experience.

3.7.7 COMMEMORATIVE MEMORIALS

From time to time members of the public seek to memorialise deceased relatives in parks and reserves by donating a tree, plant or item such as a park seat.

This reveals the close association that people feel for many of the city's parks and reserves. The Council aims to ensure that commemorative memorials in the City's parks and reserves are well placed and complementary to the surrounding environment, while meeting the needs of the sponsor and parks and reserves management activities.

The process for applying for commemorative memorials is outlined in the Council's *Commemorative Policy (2003)*. This includes applications for commemorative furniture and plantings.

An appropriate type of commemorative tree planting for Otari-Wilton's Bush, is *Trees for Wellington*, where sponsors are invited to contribute to revegetation or enhancement planting, in this case, at Otari-Wilton's Bush. In general,

Trees for Wellington recognises a visitor's time in Wellington or a person's relationship to the city. For Otari-Wilton's Bush it is about recognising a person's relationship to the reserve.

Commemorative furniture or plaques may also be appropriate, and applications for internments and scatterings may also be made in accordance with the *Commemorative Policy*.

Opportunities for sponsors to contribute to other suitable projects will also be encouraged. These might include, contributing to education programmes or publications, or contributing to aspects of development programmes.

3.7.7.1 POLICIES

- i. Members of the public may donate money to revegetation planting or an item of park furniture in remembrance of a deceased relative, subject to the following conditions:
 - (a) The item purchased shall be selected from a list of options compiled by the Council from its planting programme and intended park furniture acquisitions.
 - (b) The Council shall supply the item purchased.
 - (c) The item purchased shall be placed at a location approved by the Curator/Manager.
 - (d) The Council shall retain the right to move or remove the donated item at its discretion.
 - (e) The amount of the donation shall be set to cover the cost of plant propagation or, in the case of seats, the cost of construction and installation.
 - (f) Family members shall be invited to assist with the planting of any tree or plant donated.
- ii. Remembrance plaques may be permitted on donated built items such as park furniture (at cost to the relatives), subject to the following conditions:
 - (a) Where a plaque is installed on an item of park furniture, the donation must cover the cost of the plaque and of attaching it to the furniture.
 - (b) The Council shall supply the plaque and it shall be of the size and style deemed appropriate by the Council.
 - (c) The Council shall carry out the installation, and maintain the furniture to which it is attached, but maintenance of the plaque remains the responsibility of the sponsor.
- iii. Remembrance plaques will not be permitted on, or adjacent to individual trees or plants.
- iv. Dedications may be permitted on items such as publications subject to approval by the Curator/Manager
- v. Members of the public will also be invited to memorialise deceased relatives by making donations towards suitable special projects.
- vi. Burial of pets is not permitted within Otari-Wilton's Bush.
- vii. Otari-Wilton's Bush will keep a record of each commemorative memorial, capturing the following information:
 - (a) Name and contact details of sponsor
 - (b) Area of reserve in which memorial occurs
 - (c) Type of commemorative memorial.

3.7.8 VANDALISM AND SAFETY

Vandalism, theft and anti-social behaviour is a risk for Otari-Wilton's Bush. Council aims to minimise these risks where possible, provide safe experiences for visitors, and to protect key assets, including plant collections from wilful damage.

3.7.8.1 POLICIES

- i. All practicable measures shall be taken to ensure the safety of staff, visitors and assets.

- ii. Public entry to Otari-Wilton's Bush shall be discouraged during night time hours, except for attending pre-arranged meetings, functions and events. Normal opening hours shall be clearly displayed at all main entrances.
- iii. Damage from vandalism shall be promptly remedied to maintain a high standard of presentation and to discourage 'copy-cat' vandalism.
- iv. Adequate outdoor lighting shall be provided where most after-hours functions occur to ensure that after-hours visitors feel safe.
- v. All structures will be built and maintained to comply with Health and Safety standards.
- vi. Visitors will be made aware of hazards through the use of signage and barriers where necessary.

3.7.8.2 IMPLEMENTATION

1. A security and risk assessment, including security around the Visitors Centre, shall be carried out to provide guidance on future security measures.