

## **Background Information**

### **Proposed District Plan Change 17 – Rezoning of Evans Bay Patent Slip Area**

#### **Proposed Plan Change**

Wellington City Council has been investigating a number of options over the past two years for redeveloping the Evans Bay Patent Slip area. The land in question is surplus to the Council's needs and will be sold. The Council has an opportunity to improve the Evans Bay Patent Slip area prior to the sale of Council land. These improvements include a safer road alignment, enhanced heritage protection for Patent Slip No.2, better access along the coast and improved recreational opportunities in the area.

A change to the District Plan zoning will be required before these proposals can be carried out. The Plan change will also facilitate the future sale of the land. Much of the land is currently zoned 'Suburban Centre', which means a wide variety of uses could be carried out on the land if the Council were to sell the land as it is currently zoned without doing any improvements.

The District Plan is the primary vehicle for achieving the purpose of the Resource Management Act 1991. It provides for the management of activities in this area through objectives, policies and rules. This Plan change relates primarily to amending the District Plan Planning Maps and a change to the heritage listing in the District Plan for Patent Slip No. 2.

#### **Summary of proposed changes**

- € Realign Evans Bay Parade 20 metres inland at the corner near Greta Point
- € Establish open space area on the seaward side of Evans Bay Parade where road has been realigned. Rezone this land to Open Space A.
- € Rezone part of Lot 47 DP 66508 from Open Space A to Suburban Centre
- € Establish a Heritage Area which includes the remaining Patent Slip No.2 and some land either side of that Slip.
- € Rezone the land included in the Heritage Area and the land to the west of that area from Suburban Centre to Open Space A.
- € Amend heritage listing in the District Plan for the 'Patent Slip' from a heritage object to a heritage area.

#### **Contact Officer:**

Liz Clark, Policy Advisor District Plan  
Wellington City Council  
101 Wakefield Street  
Ph: 801 3230  
Email: [elizabeth.clark@wcc.govt.nz](mailto:elizabeth.clark@wcc.govt.nz)

## PROPOSED DISTRICT PLAN CHANGE 17 - REZONING OF EVANS BAY PATENT SLIP AREA

The Wellington City District Plan is proposed to be amended as follows:

### Chapter 21 Heritage Rules:

1. Delete the following references from the *Heritage List: Objects* and the symbol references on *Planning Map 7*.

Location	Object and date of construction (if known)	Map Reference	Symbol Reference
Evans Bay	<b>Boating Jetty</b> ( <i>this item is listed for information purposes only. The jurisdiction for this item under the RMA 1991 lies with the Wellington Regional Council</i> )	7	13
Evans Bay Parade	<b>Evans Bay Patent Slip and Wharf</b> ( <i>partly for information purposes only</i> )	7	15

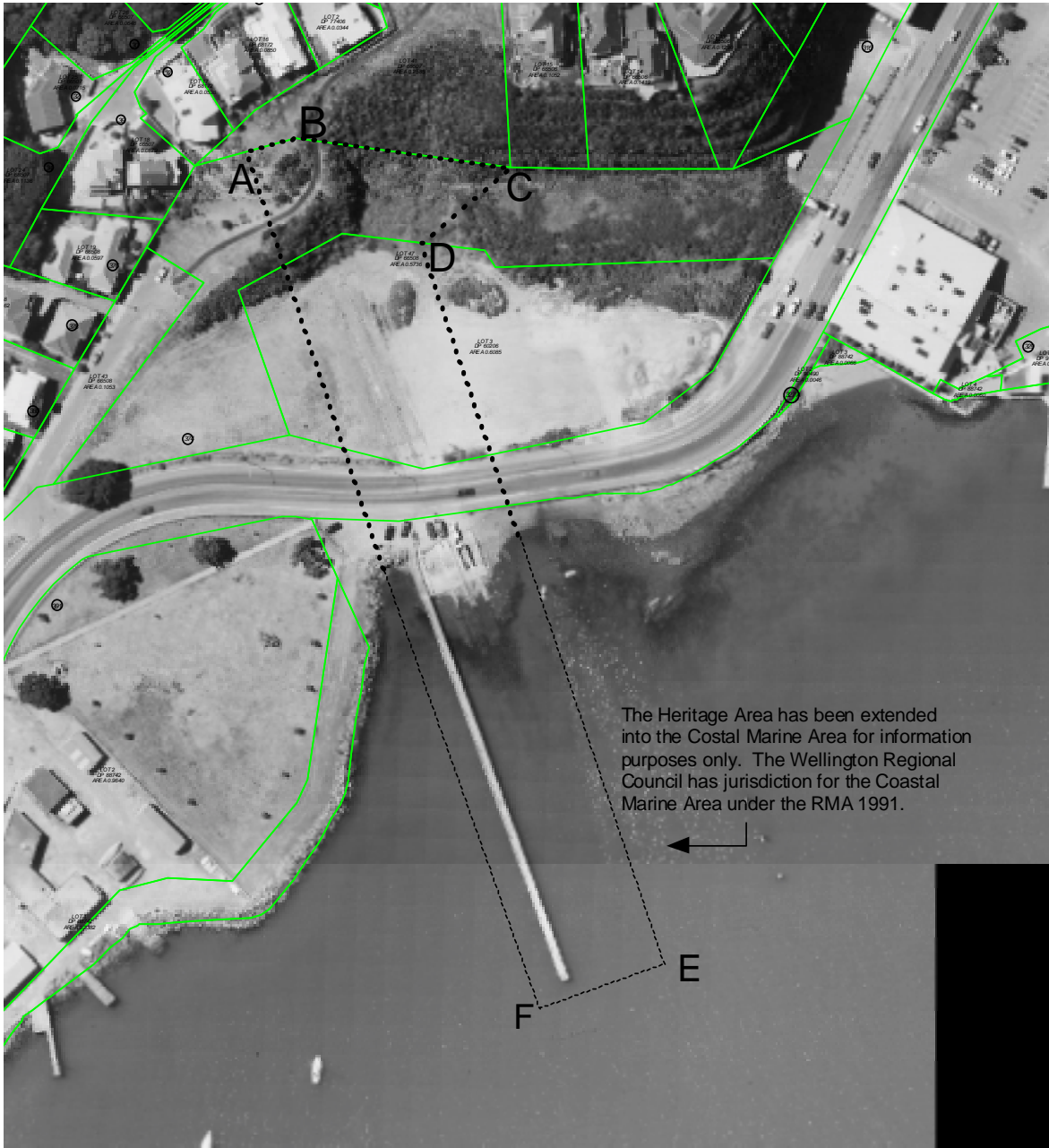
2. Insert the following reference to the *Heritage List: Areas* and include the symbol reference on the appropriate *Planning Map*.

Location	Area	Map Reference	Symbol Reference
Evans Bay Parade	Evans Bay Patent Slip Area; Wharf and Jetty (for information purposes only). The Evans Bay Slip area is the area including any objects above and below ground associated with the former Patent Slip shipping activities that are included within the following NZ Map Grid coordinates: € A: 2660815.3mE and 5987682.6mN € B: 2660831.7mE and 5987687.1mN € C: 2660888.2mE and 5987679.7mN € D: 2660857.8mE and 5987663.0mN € E: 2660905.6mE and 5987545.8mN € F: 2660876.0mE and 5987533.7mN	7	22

3. Insert new Appendix 3 to Chapter 21 (Heritage Rules) of the District Plan, showing Map Grid reference points on an aerial photograph.

4. Rezone District Plan Map 7 of the Evans Bay Patent Slip area as shown on Map 1.

# Appendix 3. Evans Bay Patent Slip Heritage Area



The Heritage Area has been extended into the Coastal Marine Area for information purposes only. The Wellington Regional Council has jurisdiction for the Coastal Marine Area under the RMA 1991.

Scale 0 10 20 30 40 50 60 Meters

..... Heritage Area under WCC jurisdiction

----- Heritage Area in WRC jurisdiction for information only

Refer to Chapter 21 Heritage Listing: Areas for NZ Map Grid coordinates of the Heritage Area