

APPENDIX 4

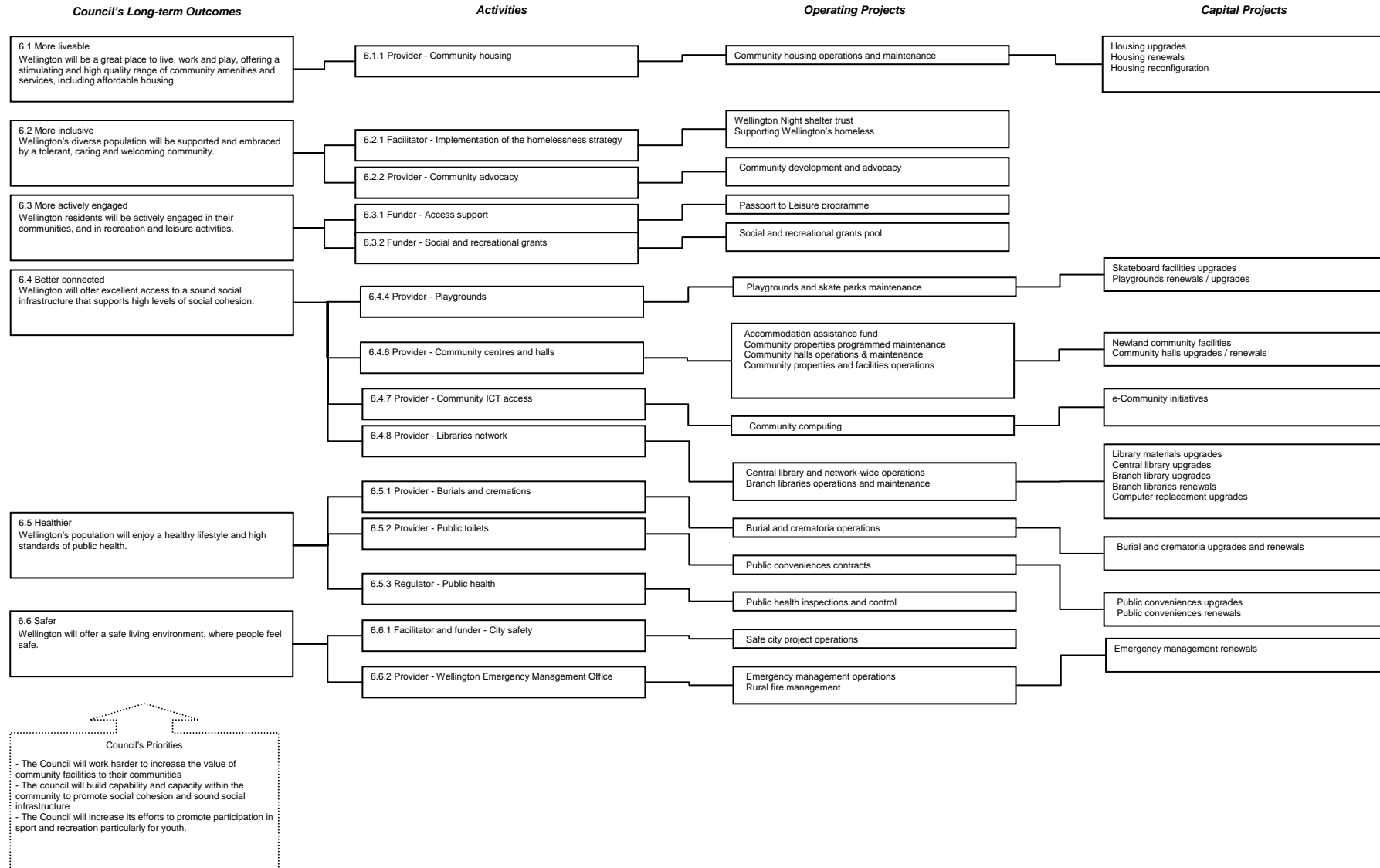
Portfolio Leaders - Areas of Responsibility

The 2006/07 – 2015/16 Long Term Council Community Plan (LTCCP) details the Outcomes, Activities, Projects and related expenditure for the seven Wellington City Council strategies. The Portfolio Leader's areas of responsibility align with these strategies.

Portfolio Area	LTCCP Strategy
Social	Social and Recreation (part)
Environment	Environment
Cultural Wellbeing	Cultural Wellbeing
Economic Development and Recreation	Economic Development
	Social and Recreation (part)
Urban Development and Transport	Urban Development
	Transport
Governance	Governance
Climate Change	Cross-strategy

Social Portfolio

Covers the following LTCCP strategy outcomes, activities and projects: **Social and Recreation Strategy (part)**



Other Strategies, Policies and Plans:

Homelessness Strategy	Library
Accommodation assistance for	Leases policy for community & recreation
Community Groups	groups
Casino policy	Liquor Licensing
Circuses policy	Mobility Parking
Community access to venues	Museums
Community facilities	Older Persons Policy
Dog Control	Playgrounds
Gaming venues	Street performance and busking policy
Housing grants	Public Conveniences
Relevant bylaws	

Environment Portfolio

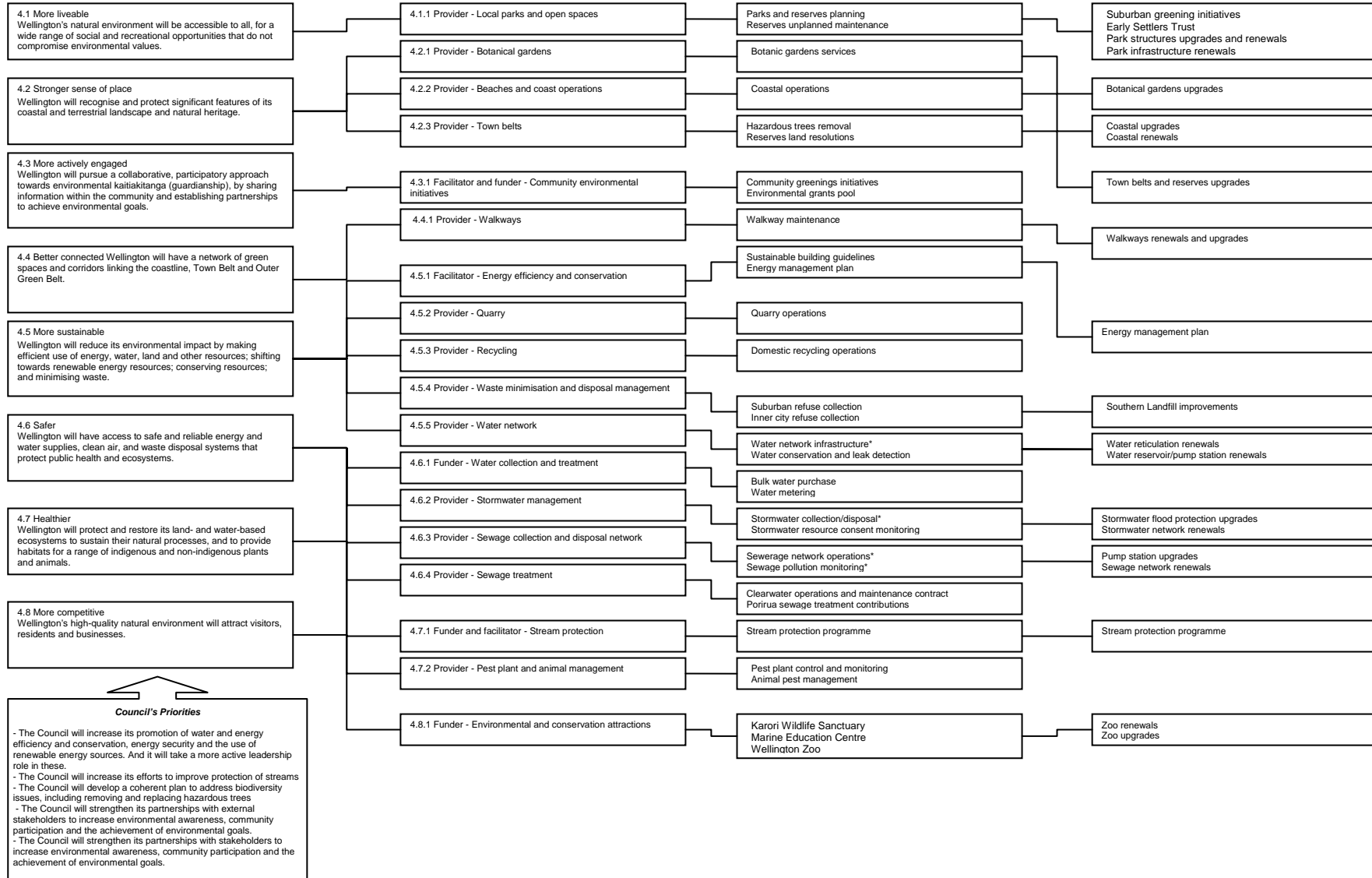
Covers the following LTCCP strategy outcomes, activities and projects: **Environmental Strategy**

Council's Long-term Outcomes

Activities

Operating Projects

Capital Projects



*Note that these cover a number of projects, which are noted under each activity

APPENDIX 4

Other Strategies, policies and plans:

Capital Spaces

Energy and Climate

Closed landfills

Environmentally friendly purchasing

Mountain biking

Open space naming

Waste Management plan

Verges

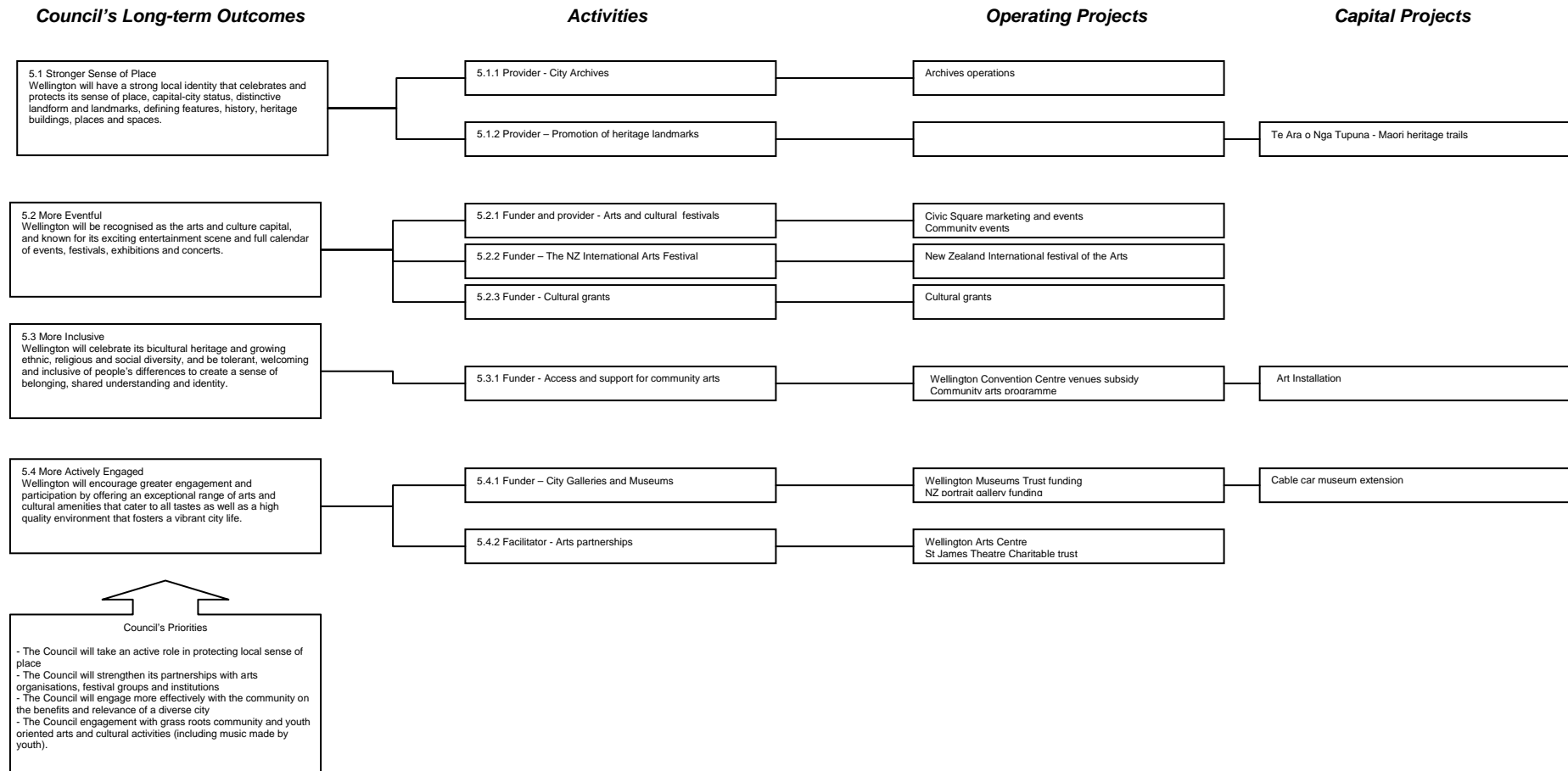
Pest management

Town Belt reinstatement

Relevant bylaws

Cultural Wellbeing Portfolio

Covers the following LTCCP strategy outcomes, activities and projects: **Cultural Wellbeing Strategy**



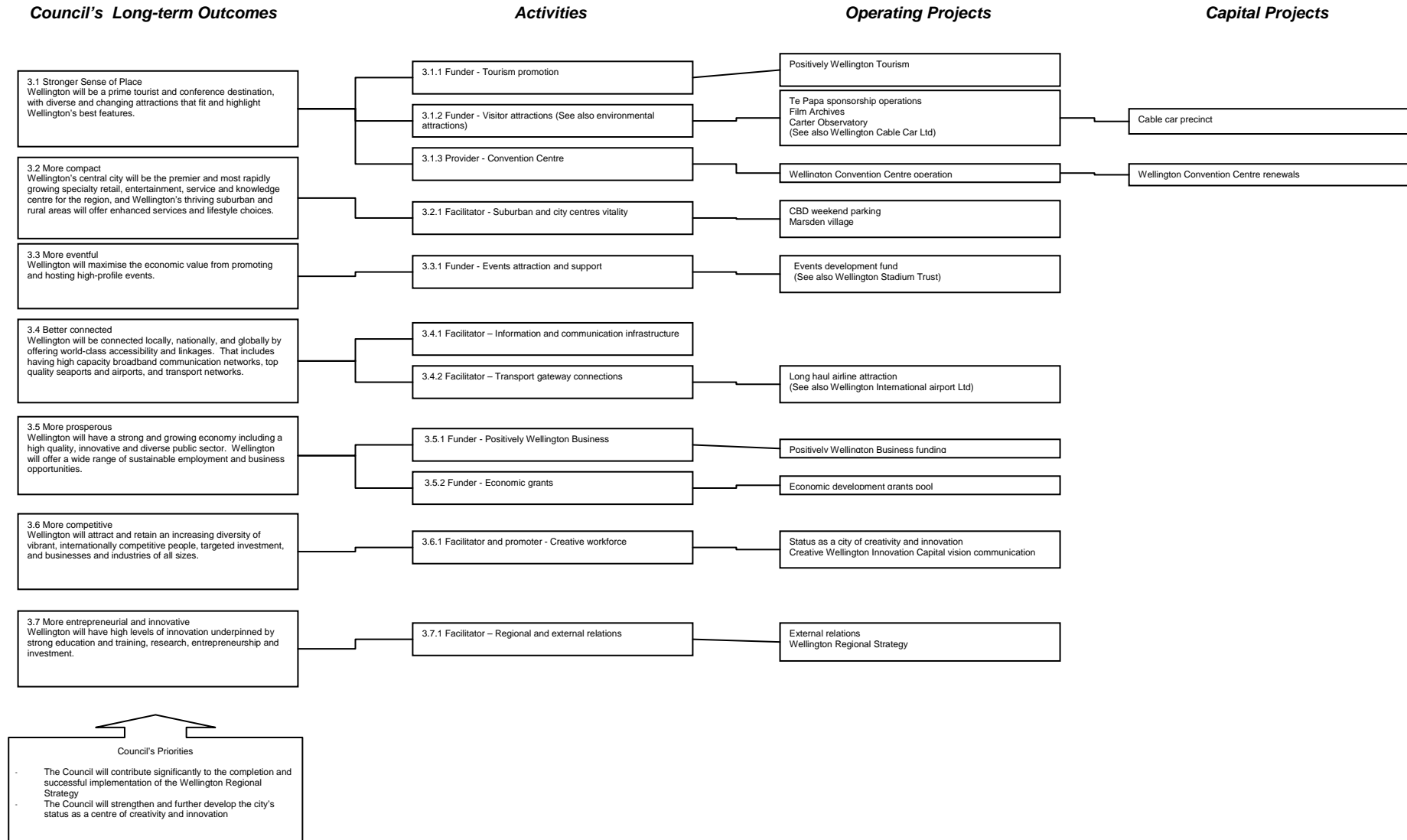
Other Strategies, policies and plans:

Arts Collection
Public Art

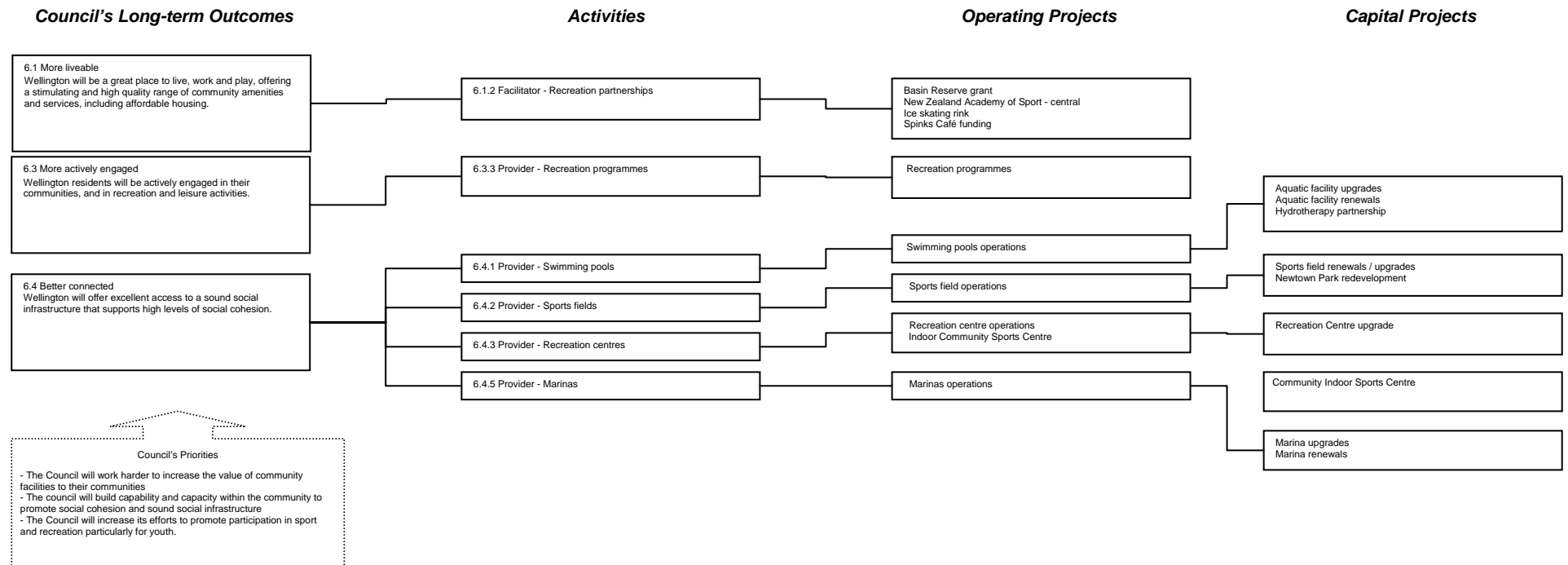
Relevant Bylaws

Economic Development and Recreation Portfolio

Covers the following LTCCP strategy outcomes, activities and projects: **Economic Development Strategy**



Social and Recreation Strategy (part)



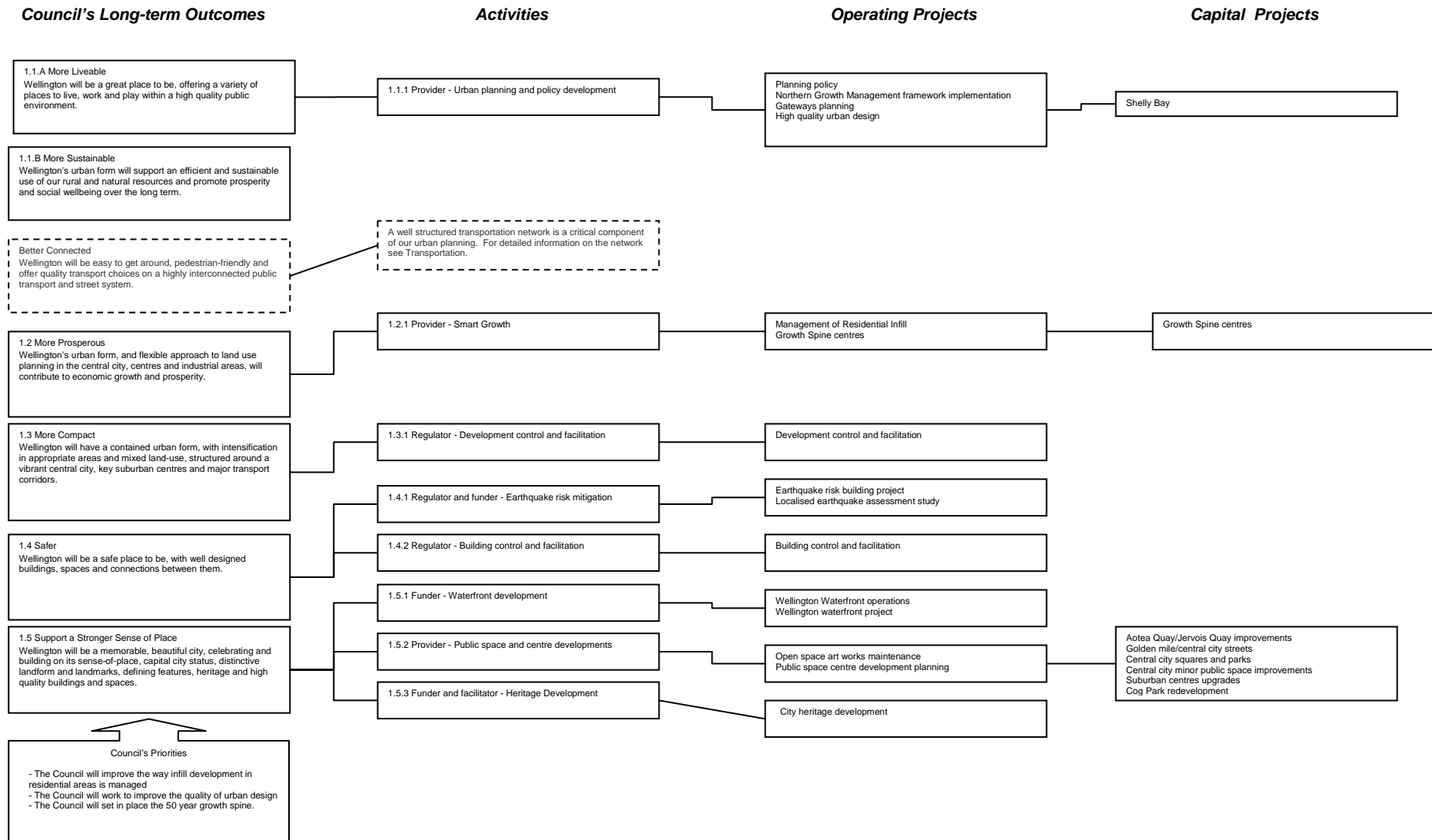
Other Strategies, polices and plans:

Creative Wellington - Innovation capital
 Event Strategy
 International Relations
 Property matters not covered by other portfolios or a chair of another Committee or Subcommittee

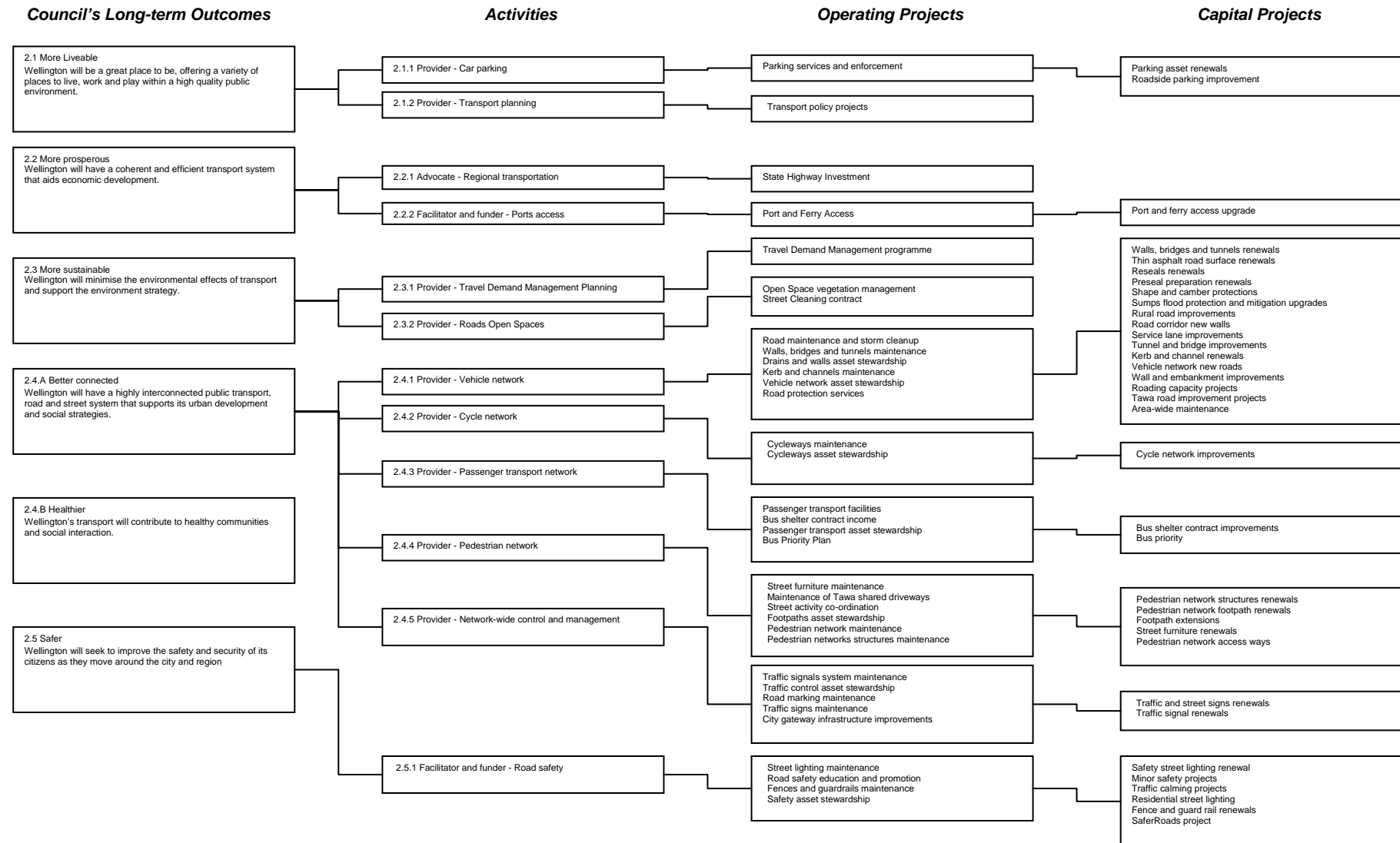
Retail Strategy
 Incentives
 Relevant Bylaws
 Broadband

Urban Development and Transport Portfolio

Covers the following LTCCP strategy outcomes, activities and projects: **Urban Development Strategy**



Transport Strategy



APPENDIX 4

Other Strategies, policies and plans:

District Plan

Waterfront Development plan

Building Safety

Wellington Regional Strategy (under development)

Built heritage

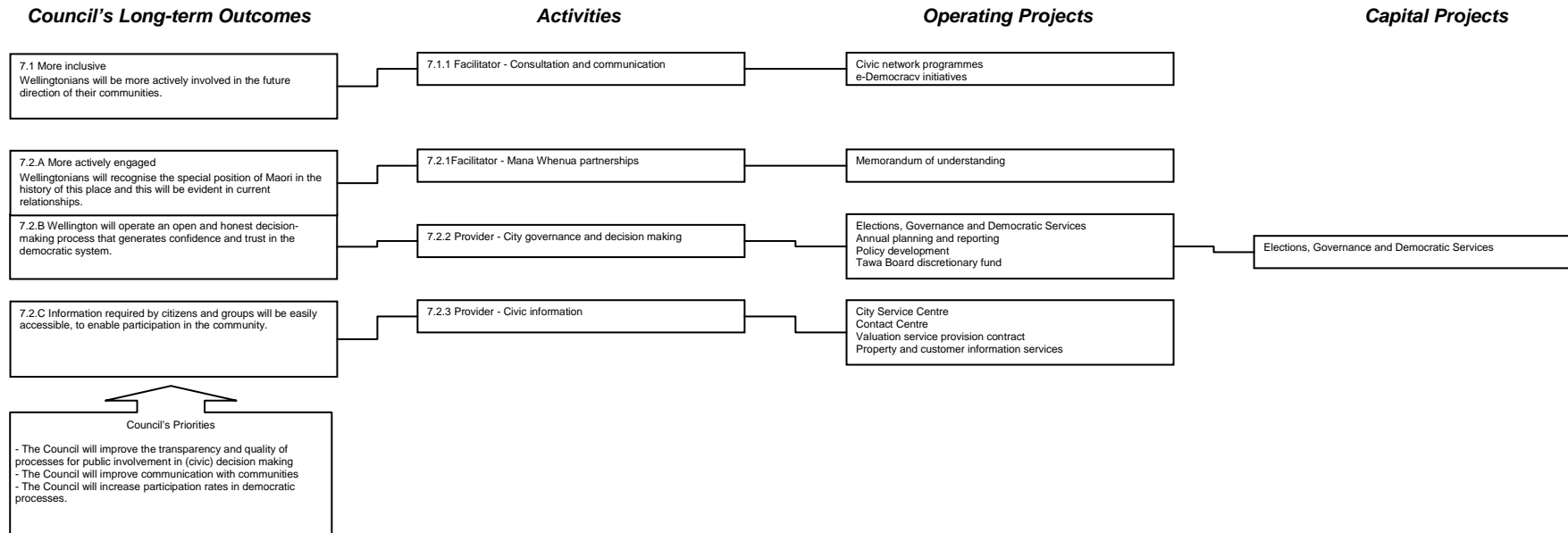
Road naming

Wellington Regional Land Transport Strategy (under review)

Relevant Bylaws

Governance Portfolio

Covers the following LTCCP strategy outcomes, activities and projects: **Governance Strategy**



Other Strategies, policies and plans:

Memoranda of Understanding
Code of conduct
Council processes and decision-making
Accountability processes of Council and Committee Leaders
Terms of reference and delegations of Council, Committees and Subcommittees
Committee Structure

Consultation policy
Local Government Statement
e-Democracy
Standing orders

Election related matters including the Representation Review
Community Board delegations

Climate Change Portfolio

The portfolio is responsible for cross-strategy matters that relate to its areas of responsibility below.

Areas of Responsibility:

Climate change

Areas

Green buildings

Sustainable transport management

Green economy

Sustainable infrastructure

Energy management

Chair, Strategy and Policy Committee

The Chair of the Strategy and Policy Committee also covers organisational areas.

Areas of Responsibility include:

SPC Forward Programme
LTCCP/Annual Plan

Policies

Funding Impact Statement and Rating
(part of 2004/05 Annual Plan)
Funding 2001-04

Investment

Liability

Rates Penalty Remission

Rates Postponement

Rates Rebate

Rates Remission and Postponement

Remissions on Land used principally for
Games or Sport

Remission of rates on Maori Freehold
Land

Remission of rates on Rural and Farm
Land

Revenue and Finance

Road Encroachment and Sale

Significance Policy

Special Circumstances Remission

Other matters

- Reports that recommend attendance at conferences will be allocated to the Portfolio Leaders to introduce depending on the subject matter of the conference.
- Conference report backs will be introduced by the Elected Members who prepared the report.
- Reports from Committees and Subcommittees will be introduced by their Chair, or appointed nominee.
- Policy and related matters that relate to a particular committee or subcommittee (e.g. Grants and Grants Subcommittee, Development Contributions and Development Contributions Subcommittee) will be introduced by the Chair of the relevant committee/subcommittee.