

Wellington
MUSEUMS TRUST



Annual Report 07/08

new ways of seeing arts, culture, heritage & Wellington



CONTENTS

Chair's Report	2
Chief Executive's Overview	4
Highlights	7
Visitation Trends	11
Audit Report	12
Statement of Service Performance	13
Financial Statements	24
Governance Report	40
Our Supporters	41
Directory	44

CHAIR'S REPORT

Wellington Museums Trust institutions have had another very successful year in providing arts, culture and heritage experiences to Wellington, with total visits reaching more than 625,000 for the twelve months to 30 June 2008. This is a remarkable achievement for a group of organisations operating within a City of less than 200,000 residents.

At the same time, visitor satisfaction levels have remained very positive and underpin the respect that Trust institutions enjoy from peers and critics who recognize the quality and diverse range of exhibitions and visitor programmes offered.

CITY GALLERY WELLINGTON REDEVELOPMENT

The Trust continues to enjoy the generous support of our core funder, the Wellington City Council, which will be extended in 2008/09 to redevelopment and seismic strengthening of the City Gallery Wellington building. The Gallery is a much-loved Wellington institution that has achieved national and international recognition for its vibrant and thought-provoking exhibitions. We are delighted, therefore, that new gallery spaces and a new auditorium will be added to the existing facilities. Construction gets underway in late 2008 and the Gallery is scheduled to reopen in late 2009.

In addition to a bequest by the Hancock Trust and funding from the Council, the redevelopment would not be possible without the generous support of benefactors Denis and Verna Adam, Roderick and Gillian Deane and the Michael Hirschfeld Family. The project is also being supported by the City Gallery Wellington Foundation and the Lottery Environment and Heritage Committee.

FUNDING

The Trust welcomed an increase to baseline funding this year, the first adjustment in Council funding in three years. However, despite this increase, pressure on the Trust's budget continues and the Council has said it is willing to consider a funding mechanism to ensure current service levels can be maintained as operating costs increase.

The Trust could not achieve the results in arts

and cultural delivery for Wellington without the contribution of other supporters. The City Gallery Wellington Foundation, chaired by Nigel Williams of ANZ National, continues to support the exhibition programme at the City Gallery; Creative New Zealand is the major supporter of the Capital E National Theatre for Children; and Ministry of Education funding supports our very successful education programmes. The Trust is also grateful to the many charitable trusts that regularly donate money for our activities.

COLONIAL COTTAGE MUSEUM

In February 2008 we celebrated the 150th anniversary of the Colonial Cottage at 68 Nairn Street, which is often described as one of the jewels of Wellington. The Cottage provides an important link with early Wellington because it is one of the few remaining authentic mid-nineteenth century cottages. The celebration was generously supported by Go Wellington, which provided buses between the Wellington Cable Car Museum and Nairn Street and enabled record numbers of visitors to enjoy the charms of the cottage.

COLLECTION STORAGE

The Trust has made progress towards the relocation of the City's collection of mainly heritage items to new premises. The proposal to move the collection has been thoroughly researched and responds to a number of reports that highlight the inadequacies of the current storage facility. It is anticipated that the collection will be in new accommodation by mid 2009.

PLIMMER'S ARK CONSERVATION PROJECT

The Trust completed its analysis of the options for the Plimmer's Ark conservation project and presented these to the Council. This project was started in 1997 when timbers were recovered from an archaeological site discovered whilst restoration work was being undertaken on the Bank of New Zealand building (now the Old Bank Arcade). The recovered timbers are from the ship *Inconstant*, which became Plimmer's Ark, and have been the centrepiece of a unique project to preserve them. The City has been compelled to review the project because of the deterioration of the tanks that hold the timbers and the need to vacate the site in which the gallery has been located.

TRUSTEE AND STAFF CHANGES

There have been a number of changes on the Board this year. Bill Brien, who was appointed to the Trust in 1999 and became Chair in November 2000, retired in December 2007. There is no doubt that Bill's steady hand contributed to the Trust's success during his term as Chair. Furthermore, the personal interest he showed in the Trust's work was very much appreciated by staff. We were delighted therefore that Bill was made a *Member of the New Zealand Order of Merit* for services to sport and the community in the 2008 Queen's Birthday honours list.

Other Trustees to retire at the end of 2007 were Simon Marsh after six years and Councillor Helene Ritchie after three years. The Trust has been privileged to have the support and guidance of these strong advocates for its work. With these retirements two new Board members have been welcomed, Councillor Hayley Wain and Rhonda Paku.

In March we farewelled our founding Chief Executive, John Gilberthorpe, and I would like to take this opportunity to thank John for the important contribution he made to the development of the cultural vibrancy of Wellington. When he started in the role the only institution in the Trust's portfolio was the City Gallery Wellington, and John has overseen the development of Capital E, the Museum of Wellington City & Sea, the Wellington Cable Car Museum and the Colonial Cottage Visitor Centre.

Our new Chief Executive, Pat Stuart, started in March 2008 and brings a wealth of experience in museum and art gallery management, which she has quickly applied in progressing a number of projects the Trust is keen to see completed.

LOOKING AHEAD

The future for Trust institutions is very bright. The Trust represents the largest grouping of arts and cultural institutions in Wellington, which over the past twelve years have made a significant and growing contribution to Wellington's cultural standing. We can see many opportunities ahead for our unique offering and we are determined to build on this past success.

To this end we have adopted a new vision to guide our development over the next three to five years. The vision reflects our ongoing ambition for visitor

experiences to be both entertaining and thought-provoking, and to provide Wellingtonians and visitors with new ways of seeing arts, culture, heritage, and, of course, Wellington. This includes the many treasures that our institutions offer, whether the great Wellington stories at the Museum of Wellington and our other museums; creative technology and theatre experiences at Capital E; or high quality contemporary art experiences at the City Gallery.

We look ahead with energy and pride to our role in supporting Wellington to preserve and enhance its status as New Zealand's Cultural Capital.



VIV BECK, CHAIR

CHIEF EXECUTIVE'S OVERVIEW

PERFORMANCE

The main contributors to the Trust's visitation success of 625,264 were City Gallery Wellington which achieved 203,919 visits, exceeding its target by nearly 44,000; Capital E which achieved 105,786 visits in a non Festival year, exceeding its target by over 10,000; and the Colonial Cottage Museum which achieved nearly 1,600 more visitors due to the celebration of the 150th anniversary of the Cottage. In addition, the Wellington Cable Car Museum and the Museum of Wellington City & Sea achieved targets of 220,000 and 90,000 respectively.

The visitor numbers are particularly good in light of the decision to close the Plimmer's Ark Gallery in late October 2007. In the previous year this gallery had achieved 68,000 visits.

Visitation is driven by the exhibitions and public programmes, including major changing exhibitions offered at Trust institutions. Repeat visitation at the City Gallery was 64% of visits reflecting the interest generated in the changing exhibition programme. At the Museum of Wellington 29% of visits were repeat visitors (9% above target), and at the Wellington Cable Car Museum 28% of visits were repeat visitors. Another indicator of success is customer satisfaction – Trust institutions consistently achieve 95% or above.

At the same time, according to the Wellington City Council's Residents Satisfaction Survey conducted by Council staff in May 2008, awareness amongst Wellington residents of Trust institutions remains high for City Gallery Wellington, the Museum of Wellington, Capital E and the Wellington Cable Car Museum. In addition the Museum of Wellington and the City Gallery continue to be the most commonly visited of the venues asked about, with a third or more respondents having visited them in the last twelve months to May 2008. A trend increase in the proportion visiting the Wellington Cable Car Museum appears to be continuing, and there has been a significant increase in the proportion of residents indicating that they visited Capital E.

Also important to the Trust is its ability to attract international and domestic tourists, and the data we have available indicates that approximately a third of our visitors are local residents, a third domestic tourists and a third international visitors.

FINANCIAL PERFORMANCE

The Trust's financial performance continues to be sound and generally in line with budget. After fully funding depreciation, the Trust had an overall deficit of \$10,734 and a cash deficit of \$12,710.

Total revenue for 2007/08 was \$8.039 million of which 74.6% was provided by the Wellington City Council. Council's total contribution towards meeting the operating costs of the Trust and five Trust institutions was just over \$6 million and of this \$1.47 million covers rental costs for occupation of Council-owned buildings.

Other funding, amounting to 25.4% of total revenue, is made up of commercial revenues (sales and admissions), sponsorship and donations. The Trust also receives significant funding from Creative New Zealand to support the Capital E National Theatre for Children and from the Ministry of Education for our education programmes.

Income increased over the 2006/07 year by 2.2% mainly due to the increase in baseline funding received from the Wellington City Council, \$360,000, which was offset by reduced grants and sponsorship, due to the Capital E National Arts Festival for Children funds raised during the 2006/07 financial year.

Overall, expenditure was 4.2% down on the 2006/07 year, due principally to the biennial Capital E National Arts Festival for Children being held in that year.

EXHIBITIONS AND PUBLIC PROGRAMMES

City Gallery Wellington has built a national and international reputation for presenting quality contemporary art exhibitions. Highlights this year included *Bill Hammond: Jingle Jangle Morning* and Tracey Moffatt's two videos *Doomed* and *Love*. The Gallery also presented two video installations from the 2007 Venice Biennale, Brett Graham and Rachel Rakena's *Aniwaniwa* and the Russian artist collective AES+F's *Last Riot*.

The Gallery presented *Reboot: The Jim Barr and Mary Barr Collection* as its centre piece exhibition for the 2008 International Arts Festival season. *Reboot* has particular relevance as it illustrates the Gallery's strong links to Wellington-based art collectors.

The Gallery presented nine exhibitions showcasing the work of Wellington artists in the Michael Hirschfeld

Gallery. This is a very popular aspect of the Gallery's programme, highlighting its connection with the local arts community and ensuring that it remains in touch with and relevant to a strong young adult audience.

The Museum of Wellington consolidated its position as the home of Wellington stories with the 40th anniversary commemoration of the sinking of the *Wahine*. The Museum arranged a programme to mark this tragic event. Over 2000 visitors attended the day, which included a bus trip out to the Pencarrow beaches where many of the survivors were swept ashore and the unveiling of a plaque at the *Wahine* memorial in Frank Kitts Park which honours the heroic efforts of rescuers.

The Museum presented *The Gallery of Helen Hitchings: from fretful sleeper to art world giant*, which celebrated New Zealand's first female art dealer, and continued its programme of community partnership exhibitions through the temporary exhibition programme *Re-Telling Tales*. The Museum in partnership with Toi Whakaari The New Zealand Drama School presented *Pakiwaitara*, a promenade theatre performance devised and performed by students, which used various sites within the Museum.

The Museum was also a finalist in the Museums Aotearoa Awards for innovation and exhibition/visitor achievement with its exhibition, *War in Paradise*.

Capital E continued to lead the way in making technology an exciting and accessible medium through which young people can express their creativity. SoundHouse™ New Zealand and the OnTV Studio launched *Digital Life*, which enables young people to develop digital skills over a sustained period of time.

Over 2000 children flocked to see the Capital E National Theatre for Children's new circus inspired show *Tale of a Dog* during its sell-out season for the April school holidays. Other Theatre highlights included a partnership with the Footnote Dance Company for a South Island tour of *Into the REM-Zone* and the presentation of its ever-popular show *Paper Shaper* the 2008 Singapore International Festival for Children, and a season of *Songs of the Sea* in Melbourne in November 2007.

Visitors to Capital E over the Christmas holidays experienced a snowy London streetscape filled with candlelight, coal fires, mistletoe and magic as we celebrated yuletide as the residents of Victorian England would have.

The Wellington Cable Car Museum continues to be a popular destination for visitors and this year received a further accolade for the restoration of Grip Car 3, completed in 2005, the 2008 Tramway Restoration Award presented by the Federation of Rail Organisations of New Zealand.

The Colonial Cottage was repainted during the year ensuring that it was well presented for the celebration of its 150th anniversary. Visitors to the Cottage particularly enjoyed the authentic garden lovingly presented under the guidance of Anna Zwartz.

The New Zealand Cricket Museum enjoyed a very successful year with visitor numbers boosted by English Cricket supporters taking advantage of the test match between New Zealand and England at the Basin Reserve, to visit the Museum. The Museum continues to receive additions to its collection of New Zealand's cricketing history and during the year completed the installation of a climate-control system which has significantly improved environmental conditions.

EDUCATION

Trust institutions all deliver quality teaching and learning experiences for primary and secondary school students and during the year 29,608 students participated in programmes. Whether they are learning about life as a European settler at the Colonial Cottage Museum, the history of Wellington Harbour at the Museum of Wellington, or the art of Bill Hammond at the City Gallery, the key ingredient for students is the authentic setting, and for the teacher, the link to the curriculum.

City Gallery Wellington, the Museum of Wellington and Capital E are recipients of Ministry of Education funding through the Learning Experiences Outside the Classroom (LEOTC). The grant received subsidises the education programmes at these institutions.

COLLECTIONS

An important part of the Trust's work is the management and care of collections. In the case of the City Gallery Wellington, it is reliant on the goodwill of private and institutional lenders for exhibitions, and we are very conscious of the need to maintain professional standards in caring for these collections.

Equally important is the care of collections owned by the City and in the Trust's care. The most significant of these relates to the former Wellington Harbour Board. In addition, as part of our agreement with Council, all city objects that were previously held by the Wellington City Archives are now held by the Trust.

The Trust is also responsible for maintaining the Colonial Cottage collection, the Cable Car collection, the Plimmer's Ark recovered timbers collection, and the United Services Medals collection.

Overall the collection has approximately 69,000 items, mostly in storage, and while the Trust continues to work towards re-housing this collection, the work of research and cataloguing continues. In this work we are supported by a group of volunteers who work alongside staff on cataloguing and managing other aspects of the collection.

SUSTAINABLE BUSINESS

Over the past year the Trust has made significant improvements to its sustainability initiatives. The Trust participated in the Sustainable Business Network's (SBN) Get Sustainable Challenge, and is a finalist in the non-profit category for the second year in a row. The Trust has seen the amazing difference a year can make, scoring between 92% and 96% in each of the SBN's three assessment areas of Commitment, Relationships & Influence, and Communication. The Trust's Environmental Sustainability Committee is inspired by the positive changes that have been implemented in the past year and are encouraged to push the Trust institutions even further, to reduce our footprint and increase our positive influence.

STAFF ACHIEVEMENTS

The Trust is very fortunate in the quality and dedication of the staff in each of the institutions and it is always very pleasing when their dedication and passion is recognised by others. This year we celebrated Paula Savage, Director of the City Gallery Wellington; being made an *Officer of the New Zealand Order of Merit* for services to arts administration in the Queen's Birthday Honours list.

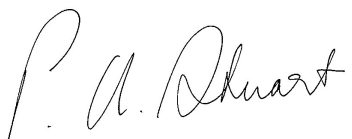
Brett Mason, Director of the Museum of Wellington was awarded a scholarship to attend the inaugural *Taking the Helm: becoming a museum CEO*, at the Getty

Leadership Institute in Los Angeles. Stephen Blackburn, General Manager, Capital E National Theatre for Children received a scholarship from Creative New Zealand's Leadership Fund and attended the Commercial Theatre Institute Producer's seminar in New York, in May.

The Trust was also delighted to receive news that the exhibition *Francis Upritchard: Save Yourself*, curated by Heather Galbraith, Senior Curator/Manager Curatorial Programmes at City Gallery Wellington, was one of two projects selected for the New Zealand representation at the 2009 Venice Biennale.

PLANNING OUR FUTURE

The Trust has developed a new vision "*new ways of seeing art, culture, heritage and Wellington*" and among the first tasks of my tenure as Chief Executive has been to develop a strategic plan to achieve that vision. The most important aspect of our work is to provide great visitor experiences for Wellington, its residents and the thousands of people who visit the city each year, and enhancing the visitor experience and at the same time improving our financial viability are at the core of this plan. Trust institutions have made a solid contribution to the city's status as Cultural Capital, and our objective is to use this foundation to build an even brighter future for our institutions and the people who enjoy them.



PAT STUART, CHIEF EXECUTIVE

HIGHLIGHTS

New initiatives and achievements

GALLERY REDEVELOPMENT GETS THE GO-AHEAD

The City Gallery Wellington will have three new galleries and a new auditorium when redevelopment is completed in 2009.

MUSEUM OF WELLINGTON EXHIBITION FINALIST

The Museum of Wellington was a finalist for Museum Aotearoa's *Exhibition/Visitor Achievement Award* for its successful exhibition *War in Paradise*.

DIGITAL LIFE AT CAPITAL E

The latest Capital E programme *Digital Life*, gives young people the opportunity to develop a vast range of digital skills including 2D computer game design, editing sound tracks and stop motion animation.

RESTORATION AWARD FOR GRIP CAR 3

The Wellington Cable Car Museum received the 2008 Tramway Restoration Award for Grip Car 3 which operated on Wellington's cable car service from 1905 and is on display in the Museum.

ANNUAL REPORT AWARDS

The Trust was a finalist in the Non Profit Organisations category of the New Zealand Society of Accountants Annual Report Awards.

GET SUSTAINABLE CHALLENGE FINALIST

For the second year in a row the Trust was a finalist in the *Not-For-Profit Category* of the *Get Sustainable Challenge* of the Sustainable Business Network Awards.

Performances, events and exhibitions

MESMERISING YEAR AT THE CITY GALLERY

From the seductive power of Bill Hammond's opulent bird paintings to the spellbinding installation of Brett Graham and Rachael Rakena's *Aniwaniwa*, the City Gallery Wellington once again illustrated a successful year of artistic talent. Particular highlights included:

- *Te Huringa/Turning Points: Māori Empowerment and Pākeha Colonisation* challenged audiences to re-think historical depictions of Māori and highlighted a turning point in New Zealand art history.
- *Bill Hammond: Jingle Jangle Morning* enriched the Gallery with its majestic bird-creatures and quirky references to music and popular culture, and featured works from the 1980s to the present day.
- Tracey Moffatt's two videos: *Doomed* and *Love* provided a vibrant and subversive social commentary on love, war and violence.
- *Last Riot: AES+F*: a highlight of the Gallery's Festival season, *Last Riot* is a three-channel video work exploring the de-humanising effect of a constant media bombardment of images of violence and war.
- *Aniwaniwa* by Brett Graham and Rachel Rakena. This large-scale installation with its personal stories reflecting on global issues, enveloped visitors with haunting memories of a place now underwater.
- Michael Hirschfeld Gallery: established and emerging Wellington artists continue to offer intriguing insights into the city's artistic wealth. Group exhibitions *Living Together*, *Capture Carnivale*, *Strive Towards Your Destiny* and *Etiquette for the Homesick* were displayed, as were six solo exhibitions.

CULTURAL CAPITAL HISTORY

The Gallery of Helen Hitchings-from fretful sleeper to art world giant was presented by the Museum of Wellington as part of the 2008 New Zealand International Arts Festival. Helen Hitchings was New Zealand's first female art dealer; the exhibition featured art works by Colin McCahon, Toss Woollaston, Rita Angus, Len Castle and architect Ernst Plischke.

WAHINE COMMEMORATIONS

The Museum of Wellington hosted a programme of remembrance events to mark the 40th anniversary of the sinking of the *Wahine*. This included the unveiling of an updated list of those who lost their lives and a private wreath-laying ceremony for survivors and their families. Throughout the day, the Museum screened the award-winning documentary *Wahine* by London-based Sharon Barbour.

OUR CHOICE VOLUNTEERS

The Museum's volunteers put together an exhibition of items from the collection to celebrate International Museum Day.

CREATIVITY AT CAPITAL E

The Capital E National Theatre for Children continued to impress with more than 2000 children rushing to see the new circus-inspired show *Tale of a Dog*. The company completed two national tours of New Zealand, presenting *Kiwi Moon*, the stage adaptation of Gavin Bishop's exquisite picture book, to over 19,000 school children, and *Songs of the Sea* to more than 22,000 children throughout the country.

INTERNATIONAL SUCCESS CONTINUES

Presentations by the Capital E National Theatre for Children were *Songs of the Sea* to over 2800 children in Melbourne's Victoria Arts Centre and *Paper Shaper* at the 2008 Singapore International Festival for Children. The company has now performed internationally every year for the past four years.

ART CASE PROVIDES SPACE FOR YOUNG ARTISTS

The brightening of the Capital E foyer with its free *Art Case* exhibition enabled schools and groups from all over the Wellington region to display art for and by children.

PRECINCT GALLERY UPGRADE

The Wellington Cable Car Museum successfully upgraded its Precinct Gallery with more interpretation on the surrounding area, including information on the original Kelburne Tea Kiosk, built by the Kelburne and Karori Tramway Company in 1904.

COLONIAL COTTAGE 150TH

In February 2008 the Colonial Cottage at 68 Nairn Street celebrated the 150th anniversary of its completion by the Wallis family.

COUNTY AND COLLINS CRICKET DISPLAYS

Two new exhibitions were installed at the New Zealand Cricket Museum: *The Collins 'Cousins' Cricket Story* and a showcase of *New Zealand Cricketers in County Cricket from 1903-2007*.

Education

CITY ART

City Gallery educators have provided another year of richly diverse programmes for schools, based on its own exhibition programme and the City to Sea Bridge by Paratene Matchitt and Rewi Thompson, and in partnership with other organisations, including the Karori Wildlife Sanctuary.

HARBOUR ADVENTURE

The Museum of Wellington continued its popular education programme, *Ship & Chip Trip*, in collaboration with the Petone Settlers Museum, the Department of Conservation and the East/West Ferries.

LEOTC CONTRACTS EXTENDED

The Ministry of Education has extended its endorsement of Capital E's Creative Technology learning experiences to incorporate the Capital E SoundHouse™ New Zealand programme, within a renewed triennial funding agreement. The City Gallery has also successfully renegotiated a new Learning Experiences Outside the Classroom (LEOTC) contract from 1 July 2008 until June 2011.

TRUST EDUCATION

Wellington Museums Trust institutions continue to provide comprehensive curriculum-linked education programmes. This year more than 29,600 students participated in educational experiences.

Public Programmes

COMMUNITY SHARES EXCITEMENT OF GALLERY PROGRAMMES

The City Gallery Wellington once again proved it was the place to be with more late night sessions, more tours and more talks from artists, curators and experts. Highlights included:

- Bill Hammond's *Jingle Jangle Bells* - an apt name for the Christmas late night session with musician Chris Knox paying special tribute to the artist.
- Artists Brett Graham and Rachael Rakena providing another successful late night talk and exhibition tour, which also included entertainment from dynamic duo *Ginger Brown* and DJs.
- Matariki Celebrations: talks from *Seven Stars* artist Matthew McIntyre, the Footnote Dance Company's *Watch This Space/Maatakitakihia Mai Tenei Waahi 2008*, Weavers' Kōrero and Wellington ensemble *Tahu* mixing traditional Māori music with classical guitar.
- The continuation of the Gallery's successful partnerships with such organisations as Victoria University's Continuing Education for NZART101 and two collaborations with Huia Publishing for the *Festival of Māori Writers 2007 - Telling our stories on screen and Te hā tarapepe - The Resonating Breath of our Tipuna*.

QUEENS WHARF PROGRAMMES

This year, the Museum of Wellington conducted a number of public programmes based on its core visitor experience. These included curator talks, poetry readings, book launches and musical events. Highlights included:

- The development of *The City to Sea Tour*, which aims at the international cruise market and includes visits to Wellington's Cable Car, the Wellington Cable Car Museum and Kirkcaldie & Stains.
- *International Talk like a Pirate Day*, celebrated as a corporate challenge event on Queens Wharf.
- An exclusive one-off poetry reading by poet Fleur Adcock, in association with the New Zealand Poetry Society.
- The Museum's Friends organisations, Maritime Friends and the Wellington Historical and Early Settlers' Association, also continued to host public programmes.

Research and Collections

SAILING AWAY WITH SOUNDHOUSE

Passengers aboard the Interislander ferries were treated to performances of *Rock While You Roll* by SoundHouse scholarship students during the July school holidays.

SOUNDHOUSE ON THE CENTRAL PLATEAU

Capital E took SoundHouse to the Taupo Festival programme as part of a celebration of musical composition. Young people from throughout the central North Island enjoyed the opportunity to be creative with technology.

COLLECTION STORE MOVE

Following independent reports and a feasibility study for a regional collection store, the Trust has developed criteria for a new collections store and began the search for suitable premises.

COLLECTION CATALOGUING CONTINUES

The collection team continues to catalogue and photograph the collection. To date 21,000 items have been catalogued and entered onto the Vernon collection management system with completion expected by the end of 2008. We are indebted to our volunteers with over 3000 hours of service provided so far this year.

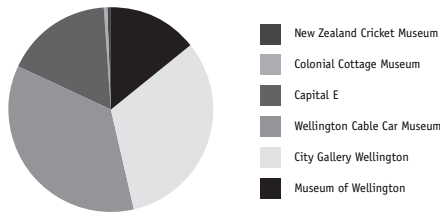
SUCCESS AT THE CRICKET MUSEUM

The New Zealand Cricket Museum enjoyed a successful year with record visitor numbers, aided by English supporters attending the recent test match between England and New Zealand at the Basin Reserve.

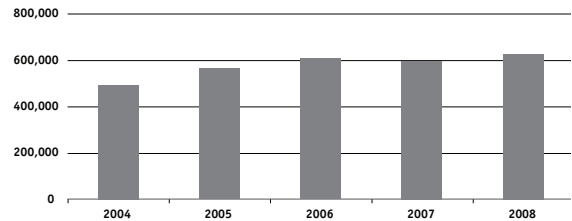
The museum's collection catalogue work is also well underway using the Vernon collection database with over 800 items entered so far. A large number of cricket treasures have also been gifted to the museum throughout the year.

VISITATION TRENDS

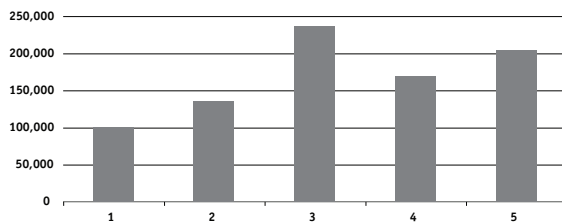
Wellington Museums Trust visitation for 2008



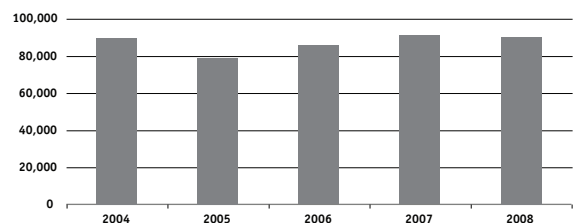
Visitation Trends for Wellington Museums Trust (excluding Plimmors Ark Gallery)



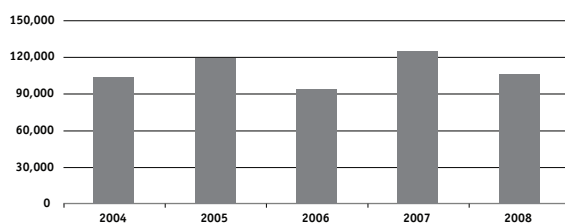
Visitation Trends for City Gallery Wellington



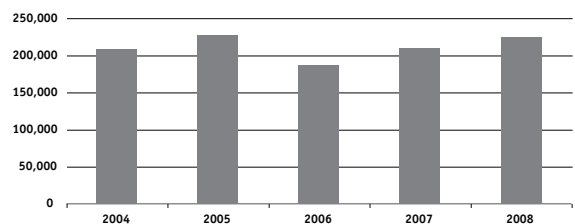
Visitation Trends for Museum of Wellington



Visitation Trends for Capital E

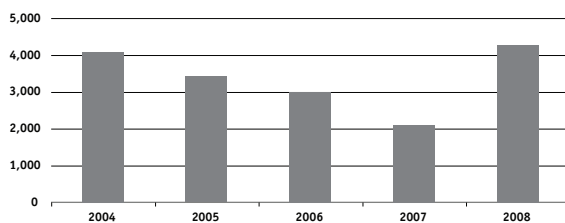


Visitation Trends for Cable Car Museum

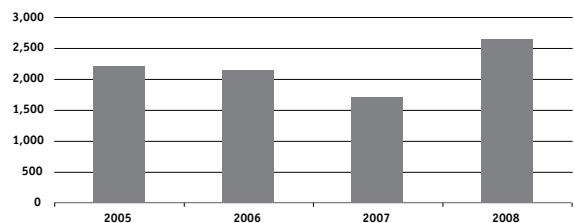


NOTE: Variation due to Capital E Art Festival for Children occurring in alternate years.

Visitation Trends for Colonial Cottage Museum



Visitation Trends for New Zealand Cricket Museum



AUDIT REPORT

FINANCIAL STATEMENTS AND PERFORMANCE INFORMATION FOR THE YEAR ENDED 30 JUNE 2008

The Auditor-General is the auditor of Wellington Museums Trust Incorporated ("the Trust"). The Auditor-General has appointed me, Godfrey Boyce, using the staff and resources of KPMG, to carry out the audit of the financial statements and performance information of the Trust on his behalf, for the year ended 30 June 2008.

UNQUALIFIED OPINION

In our opinion:

- The financial statements of the Trust on pages 21 to 24:
 - comply with generally accepted accounting practice in New Zealand; and
 - give a true and fair view of:
 - the Trust's financial position as at 30 June 2008; and
 - the results of operations and cash flows for the year ended on that date.
- The performance information of the Trust on pages 13 to 20 gives a true and fair view of the achievements measured against the performance targets adopted for the year ended 30 June 2008.
- Based on our examination the Trust kept proper accounting records.

The audit was completed on 6 August 2008, and is the date at which our opinion is expressed.

The basis of our opinion is explained below. In addition, we outline the responsibilities of the Board of Trustees and the Auditor, and explain our independence.

BASIS OF OPINION

We carried out the audit in accordance with the Auditor-General's Auditing Standards, which incorporate the New Zealand Auditing Standards.

We planned and performed the audit to obtain all the information and explanations we considered necessary in order to obtain reasonable assurance that the financial statements and performance information did not have material misstatements, whether caused by fraud or error.

Material misstatements are differences or omissions of amounts and disclosures that would affect a reader's overall understanding of the financial statements and performance information. If we had found material misstatements that were not corrected, we would have referred to them in our opinion.

The audit involved performing procedures to test the information presented in the financial statements and performance information. We assessed the results of those procedures in forming our opinion.

Audit procedures generally include:

- determining whether significant financial and management controls are working and can be relied on to produce complete and accurate data;
- verifying samples of transactions and account balances;
- performing analyses to identify anomalies in the reported data;
- reviewing significant estimates and judgements made by the Board of Trustees;
- confirming year-end balances;
- determining whether accounting policies are appropriate and consistently applied; and
- determining whether all required disclosures are adequate.

We did not examine every transaction, nor do we guarantee complete accuracy of the financial statements and performance information.

We evaluated the overall adequacy of the presentation of information in the financial statements and performance information. We obtained all the information and explanations we required to support our opinion above.

RESPONSIBILITIES OF THE TRUSTEES AND THE AUDITOR

The Board of Trustees is responsible for preparing the financial statements in accordance with generally accepted accounting practice in New Zealand. The financial statements must give a true and fair view of the financial position of the Trust as at 30 June 2008 and the results of operations and cash flows for the year ended on that date. The Board of Trustees is also responsible for preparing performance information that gives a true and fair view of service performance achievements for the year ended 30 June 2008. The Board of Trustees' responsibilities arise from the Financial Reporting Act 1993 and the Local Government Act 2002.

We are responsible for expressing an independent opinion on the financial statements and performance information and reporting that opinion to you. This responsibility arises from section 15 of the Public Audit Act 2001 and section 69 of the Local Government Act 2002.

INDEPENDENCE

When carrying out the audit we followed the independence requirements of the Auditor-General, which incorporate the independence requirements of the Institute of Chartered Accountants of New Zealand.

Other than the audit, we have no relationship with or interests in the Trust.



Godfrey Boyce, KPMG
On behalf of the Auditor-General
Wellington, New Zealand

STATEMENT OF SERVICE PERFORMANCE

For the year ended 30 June 2008

OBJECTIVES:

1.0 COLLECTIONS AND CONSERVATION

Develop and maintain collections that enable the Trust to document, illustrate and explore Wellington's social and cultural heritage for the benefit of present and future generations.

	ACTION	MEASURE	STATUS AT 30 JUNE 2008
1.1	Advise Wellington City Council on the conservation management and future development of the Plimmer's Ark.	Decision made by the Wellington City Council by July 2007 on the long-term conservation of Plimmer's Ark and Wellington Museums Trust develops plan to implement the Council's decision by October 2007.	The Trust completed a review of the conservation project in January 2008 and a report with recommendations was presented to the Council in June 2008. It is understood that Council will make a decision in August 2008.
1.2	Maintain and safely house the city's collection of objects at its four sites to an acceptable international standard.	Complete assessment into the regional concept for a relocated collection store by May 2007	Achieved. The Regional Collection Store Feasibility Study was completed.
1.2.1		Develop plan by December 2007 in conjunction with the Council to relocate the Tyers Road collection store.	Achieved. A Collection relocation project plan was developed by December 2007 following discussion with Council officials.
1.2.2		Maintain the large heritage objects displayed at the Wellington Cable Car Museum to recognised international standards – ongoing	Further assessment required to evaluate practice against appropriate standards.
1.2.3		Manage the collection at the Colonial Cottage Museum to recognised international standards – ongoing	Further assessment required to evaluate practice against appropriate standards.
1.3	To make accessible to the public information on the city's collection.	Continue upgrade of collection management system to enable collections to be available to the community using online technology - ongoing.	Achieved. The collection is progressively catalogued on the Trust's electronic database. Collection information was provided on twenty objects for the newly developed NZ Museums website (www.nzmuseums.co.nz).
1.4	Upgrade the Wellington Cable Car Museum's Grip Car 1 and Precinct Galleries to better integrate the story.	Project team confirmed and plan to open upgrade on 6 December 2007	Stage 1 of the precinct gallery was completed and opened 5 December 2007. Further development of the Grip Car 1 gallery has been deferred.

ACTION	MEASURE	STATUS AT 30 JUNE 2008	
1.5	Develop the concept of 'heritage meets theatre' in the Winding Room to present the story in a lively and high-impact way.	Project Team established, concept developed, funding secured and new experience delivered by March 2008	Concept developed but no further work undertaken. Project will be reassessed in context of other priorities.
1.6	Provide advice and advocacy of the conservation of the Cable Car Trailer – Palace Tram in Kelburn	Develop in partnership with Cable Car Heritage an advocacy plan to restore and display tram.	Achieved. Discussions held with Council. Conservation Plan commissioned.
1.7	Maintain the heritage values of the Colonial Cottage	Manage the building at 68 Nairn Street in terms of the conservation plan and make the building accessible to the public at weekends and daily in January.	Achieved.

2.0 CREATIVE AND LEARNING EXPERIENCES

To develop high quality creative arts cultural and heritage experiences to enable people to develop a greater understanding of Wellington's culture and heritage.

	GOALS	PERFORMANCE MEASURES	STATUS AT 30 JUNE 2008
2.1	To maximise visitation to the Wellington Museums Trust group that attracts local, national and international visitors.	To attract 90,000 visitors to the Museum of Wellington City & Sea.	Achieved. 90,209 visits recorded compared to 90,807 in 2006/07.
2.1.1		To attract 160,000 visitors to City Gallery Wellington.	Achieved. 203,919 visits recorded compared to 168,648 in 2006/07.
2.1.2		To attract 220,000 visitors to the Wellington Cable Car Museum	Achieved. 224,002 visits recorded compared to 208,589 in 2006/07.
2.1.3		To attract 2,700 visitors to the Colonial Cottage Museum.	Achieved. 4,273 visits recorded compared to 2,093 in 2006/07. The significant increase was due to the celebration of the Cottage's 150 th anniversary in March 2008.
2.1.4		To attract 20% repeat visitation to the Museum of Wellington City & Sea.	Achieved. 29% of visits were repeat visitors compared to 20% in 2006/07.
2.1.5		To attract 95,000 visitors to Capital E activities.	Achieved. 105,786 visits recorded compared to 124,812 in 2006/07. The decrease from the previous year was due to the Capital E Arts Festival for Children occurring in that year.
2.1.6		7,500 students experience the Capital E SoundHouse programmes.	Not achieved, due to the lower than advised numbers of education tour students from the United States of America 7,103 students attended compared to 5,957 in 2006/07.
2.1.7		7,500 students experience an Capital E ONTV programme	Not Achieved. – Due to the lower than advised numbers of education tour students from the United States of America 7,132 students attended compared to 7,031 in 2006/07.
2.2	To provide education programmes for school students that are linked to curriculum standards and support educational outcomes.	6,000 students experience a programme at the Museum of Wellington City & Sea	Achieved. 6,013 students attended programmes compared to 7,108 in 2006/07. The 2007/08 target was reduced in line with the resources available to deliver this service.
2.2.1		2,000 students experience a programme at the Wellington Cable Car Museum and Colonial Cottage Museum.	Achieved 2,069 students attended programme at the Wellington Cable Car Museum compared to 257 in 2006/07. 1,171 students attended programme at the Colonial Cottage compared to 851 in 2006/07.
2.2.2		7,100 students experience the City Gallery Wellington programmes.	Not Achieved. The target was reduced in line with the resources available to deliver this service. 6,120 students attended programmes compared to 5,699 in 2006/07.

ACTION	MEASURE	STATUS AT 30 JUNE 2008
2.3	To provide public programmes that augment exhibition programmes, encourage public participation and cultural and heritage understanding.	Achieved Two concerts per weekend with a transport/Wellington theme were provided over four weekends.
2.3.1	Present three seasons of exhibitions in the main galleries of City Gallery Wellington, including the work of two international artists (Hany Armanious and Salla Tykka), a 2008 Festival exhibition featuring the New Zealand artist Michael Parikowhai and an exhibition of Crown Lynn.	Achieved. 3.5 exhibition seasons were presented: 0.5) <i>Hany Armanious: Morphic Resonance, Salla Tykka: Cave & Zoo, Laurence Aberhart</i> (opened in 2006/2007). 1) <i>Te Huringa / Turning Points, Contemporary Projects, Denis O'Connor: What the Roof Dreamt</i> 2) <i>Bill Hammond: Jingle Jangle Morning, Tracey Moffatt: Love and Doomed</i> 3) <i>Reboot: The Jim Barr and Mary Barr Collection, Russian Art Collective AES+F's Last Riot, Brett Graham and Rachael Rakena's Aniwanuiwa</i> (Season 3: Festival Season, which differed from what was initially proposed).
2.3.2	Present 9 exhibitions in the Hirschfeld Gallery at the City Gallery Wellington and accompanying talks by artists dedicated to Wellington, Wellington artists and art about Wellington.	Achieved. 1) <i>Capture Carnivale</i> (in collaboration with the Cuba Street Carnivale) 2) <i>Katherine Smyth: A Survey</i> 3) <i>g.bridle: Segregated Enlightenment: A Critique of the Retreat</i> 4) <i>Sandra Schmidt: Hinterland II</i> 5) <i>Living Together</i> 6) <i>Strive Towards Your Destiny</i> 7) <i>Grotto: wall works by Victor Berezovsky</i> 8) <i>Etiquette for the Homesick</i> 9) <i>Seven Stars: Matthew McIntyre Wilson</i>

ACTION	MEASURE	STATUS AT 30 JUNE 2008
2.4	To create and present a diverse and dynamic programme of exhibitions, events and visitor experiences that meet the objectives and vision of the Trust.	<p>Present two new temporary exhibitions at the Museum of Wellington City & Sea and five community shows and develop an ongoing programme in the museum's 'container'.</p> <p>Achieved.</p> <p>Three new temporary exhibitions were presented:</p> <ol style="list-style-type: none"> 1) <i>Alfred, Mabel & Charles</i> 2) <i>War in Paradise</i>, and 3) <i>The Gallery of Helen Hitchings</i> . <p>Five community exhibitions were presented as part of the <i>Re-Telling Tales</i> series</p> <ol style="list-style-type: none"> 1) <i>Found beneath the bypass</i> presented by students from the Wellington Institute of Technology (WelTec). 2) <i>Contemporary Translation in Jewellery</i> presented by students from Whitireia Community Polytechnic. 3) Two series of one minute documentaries and docudramas from the New Zealand Film & Television School students. 4) <i>It is rocket science</i> presented by the New Zealand Playcentre movement. 5) <i>Our Choice</i> presented by Museum volunteers from the collection. <p>Two public programmes were presented:</p> <ol style="list-style-type: none"> 1) <i>Dancing with Niaouli Trees</i> presented by Footnote Dance Company 2) <i>Pakiwaitara</i> presented by Toi Whakaari: the New Zealand Drama School. <p>Concept for container developed but no further work undertaken.</p>
2.5	Present 12 events at Capital E utilizing the building and on occasions the Civic Square.	<p>Achieved.</p> <ol style="list-style-type: none"> 1) <i>Massive DMV</i> 2) Halloween 3) <i>Dance Your Socks Off</i> 4) <i>Diwali</i> 5) <i>Sin Nian</i> (Chinese New Year) 6) <i>Jane and the Dragon</i> 7) <i>Short Films for Square Eyes</i> 8) <i>What Goes Up</i> Circo Arts production 9) Christmas at Capital E, 10) <i>The Games We Played</i>, summer series 11) <i>RoboCup</i> 12) <i>Fricnic</i>

3.0 CREATIVE AND LEARNING EXPERIENCES

To position Wellington as the hub of creativity, technology and performance experiences for children

GOALS	PERFORMANCE MEASURES	STATUS AT 30 JUNE 2008
3.1	Deliver the Capital E National Theatre for Children programme that allows children to explore, and experience their arts and cultural heritage through the opportunity to experience the very best in professional performance art, presenting work that speaks of Aotearoa and our place in the world.	Achieved. Two School Seasons involving 5 performances of <i>Stealing Games</i> and 32 performances of <i>Kiwi Moon</i> Five Public Seasons involving 24 performances of <i>Paper Shaper</i> ; 24 performances of <i>Songs of the Sea</i> ; 4 performances of <i>Piggies and Little Sausage went for a walk</i> ; 14 performances of <i>Kiwi Moon</i> ; and 23 performances of <i>Tale of a Dog</i> .
3.1.1	National Tour of two productions will reach North and South Island audiences	Achieved. Three Tours: <i>Into the REM Zone</i> , <i>Songs of the Sea</i> , <i>Kiwi Moon</i>
3.1.2	At least one show will be on-sold within New Zealand, and one exported to Australia	Achieved. WITHIN NEW ZEALAND <i>Paper Shaper</i> was performed in seven centres (Christchurch, West Coast, Manukau, Taranaki, Tauranga, Nelson, and Wanganui). <i>Songs of the Sea</i> was performed in two centres (the Edge, Auckland and Expressions, Upper Hutt) <i>Stealing Games</i> at the Edge, Auckland. <i>Kiwi Moon</i> at Manukau INTERNATIONAL <i>Paper Shaper</i> in Singapore. <i>Songs of the Sea</i> in the Arts Centre Victoria, Melbourne, Australia.
3.1.3	Theatre to tour <i>Into the REM Zone</i> , a new work developed in collaboration with Footnote Dance company.	Achieved. The production toured to ten centres nationally.
3.1.4	Three signature events presented supported by other major partnerships and community events.	Achieved. <i>Massive DMV</i> with The Interislander, <i>Halloween</i> ; and <i>Dance Your Socks</i> off with the Wellington City Council Diwali with the Asia New Zealand Foundation, Sin Nian (Chinese New Year) with the Asian Events Trust, <i>Jane and the Dragon</i> with Weta Workshop, <i>Short Films for Square Eyes</i> with the New Zealand Children's Film Foundation, <i>'What Goes Up'</i> Circus Show, <i>Christmas at Capital E</i> , <i>RoboCup</i> regional and national competition, <i>Fricnic</i> with the Wellington Fringe Festival

GOALS	PERFORMANCE MEASURES	STATUS AT 30 JUNE 2008
3.2 To offer SoundHouse scholarships that nurture young musical, dance and technical talent and provide a safe and balanced entry into the world of professional performance.	30 students attend the scholarship programme and present as part of the annual performance programme.	Achieved. Scholarship students performed on The Interislander ferries during the July school Holidays in 2007 as part of Capital E's offering of public programme activity and in line with sponsorship arrangements. One student produced a completed CD.
3.3 To develop at Capital E a programme of after-school, weekend and holiday works that provides opportunities for the creative development of children.	A programme of weekend workshops/ events (including ONTV/ SoundHouse activity) will take place for at least 30 weekends (or equivalent), and throughout school holidays	Achieved. 3,235 children attended workshops during the year. The workshops included term-time classes in Creative Technology, Circo Arts and Improvised Theatre which each ran for 36 weeks throughout the year. The other workshops were programmed in school holiday time and covered animation, robotics, photo art, mask making, make up for movies, miniatures, animatronics as well as regular SoundHouse and ONTV holiday programmes.

4.0 EFFECTIVE PARTNERSHIPS

To work in partnership with Wellington city cultural, arts and heritage organizations to share resources and assist in positioning Wellington as the cultural capital.

GOALS	PERFORMANCE MEASURES	STATUS AT 30 JUNE 2008
4.1	Develop and maintain strategic relationships and operational projects.	<p>Achieved.</p> <p><i>Innocents Abroad</i> completed its national tour to eight venues in February 2008.</p> <p><i>War in Paradise</i> was exhibited in New Caledonia in April 2008 and the New Zealand tour is being programmed, with one venue confirmed to date.</p> <p>Other partnerships established include the Wellington Zoo (educational), Downstage Theatre (Arts-Drama), The Interislander (Arts-Music).</p>
4.1.1	Tour through the City Gallery Wellington to other New Zealand venues, two exhibitions including, <i>Elizabeth Thompson-My Hi Sci Fi</i> and <i>Laurence Aberhart</i>	<p>Achieved.</p> <p>159,217 visits were achieved through national tours of <i>Elizabeth Thompson-My Hi Sci Fi</i> and <i>Laurence Aberhart</i>.</p> <p><i>Elizabeth Thomson</i> toured to 4 venues: Waikato Museum of Art and History – exhibition across 2006/07 & 2007/08; Te Tuhi - The Mark, Pakuranga, Auckland; Rotorua Museum and Art Gallery; Dunedin Public Art Gallery.</p> <p><i>Laurence Aberhart</i> was exhibited at two venues 2007/08: Dunedin Public Art Gallery; Auckland Art Gallery Toi o Tāmaki</p>
4.1.2	Generate 20 partnerships with Wellington-based arts, cultural and educational institutions, other organisations to deliver events, exhibitions or public programmes.	Achieved – Over twenty project-based partnerships were achieved, to deliver a range of exhibition and public programmes across Trust institutions.
4.1.3	Tour two productions from the Capital E National Theatre for Children nationally and one internationally.	Achieved. (see list under Theatre tour above)

5.0 EFFECTIVE PARTNERSHIPS

To work in partnership with Wellington city cultural, arts and heritage organizations to share resources and assist in achieving sustainability.

GOALS	PERFORMANCE MEASURES	STATUS AT 30 JUNE 2008	
5.1	To establish long-term partnership agreements with Wellington based arts, cultural and tourist organizations.	Two new long-term partnership agreements established.	No formal agreements in place. However, Trust institutions continue to work closely with many organisations to deliver specific exhibitions and public programme projects.
5.1.1		Leadership role to be taken with the Cable Car Tourism Precinct group.	The Precinct is a Wellington City Council-led project, and the Trust has provided input into the development options in recognition of the importance of the project to the Wellington Cable Car Museum.

6.0 EFFECTIVE PARTNERSHIPS

To work in partnership with national and international arts and heritage organizations to access exhibitions and resources for mutual benefit.

GOALS	PERFORMANCE MEASURES	STATUS AT 30 JUNE 2008	
6.1	Maintain relationships with national and international museums and galleries to share resources	Develop two major international partnerships at the City Gallery Wellington with overseas institutions (Museum of Contemporary Art, Sydney, Australia; Institute of Modern Art, Brisbane, Australia).	Achieved. Institute of Modern Art, Brisbane for <i>Hany Armanious: Morphic Resonance</i> Museum of Contemporary Art, Sydney for <i>Fiona Hall Force Field</i> (realized in 2008-09)
6.1.1		Develop and tour an exhibition of a senior New Zealand artist in partnership with another New Zealand arts institution (Dunedin Public Art Gallery and Laurence Aberhart).	Achieved. The exhibition of photographs <i>Laurence Aberhart</i> toured to two venues

7.0 COMMUNITY ENGAGEMENT

To encourage participation and understanding of Wellington's arts culture and heritage by providing opportunities for participation by community groups.

	GOALS	PERFORMANCE MEASURES	STATUS AT 30 JUNE 2008
7.1	Become known as a welcoming, inclusive organization that recognizes the role of migrant groups and recognises the value and benefits of a culturally, socially and religiously diverse community by creating opportunities to tell their stories and share in their events.	Continue to partner with Te Taura Whiri the Maori Language Commission to organise events for Maori Language week.	Achieved.
7.1.1		At Capital E work with the Chinese, Indian Thai and Indonesian communities to organise events associated with their national days or festivals.	One out of three events achieved. Sin Nian (Chinese New Year) event was held. Other events were not held due to partner organizations pursuing other options.
7.1.2		City Gallery to continue to deliver and develop Deaf Community Tours in partnership with Council.	Not achieved due to resourcing issues.
7.1.3		Capital E will provide three public events to occur throughout the year and facilitate five community partnership events	Achieved. (See list above)
7.1.4		Continue with and develop the Late Night Sessions (opening the Gallery late on Thursday nights).	Achieved.
7.1.5		Hold a Youth Arts Day at City Gallery in conjunction with the Muka Youth Prints.	Achieved.

GOALS	PERFORMANCE MEASURES	STATUS AT 30 JUNE 2008
7.2 To work in partnership with local iwi and Maori to ensure recognition of the contribution of the tangata whenua.	Work in partnership with the Tenth Trust for the development of the new Maori Gallery at the City Gallery by formalizing the relationship.	Progress made although no formal partnership in place.
7.2.1	Play a kaitiaki role in its care of the City's Maori taonga in a culturally appropriate way.	Achieved. The Museum of Wellington City & Sea cares for the Pain Collection of taonga. Capital E has partnered with the Ministry of Education and Te Puni Kokiri to establish a digital storytelling experience which harnesses the stories and perspectives of young Māori – in discussion.
7.2.2	Continue the planning to present "Wellington 10ths" – an examination of the Port Nicholson Block treaty claim	Achieved. Museum of Wellington City & Sea Curator engaged to work with Tenth Trust and develop the exhibition <i>The Price of Wellington</i> to be presented in 2010. In addition the Museum sought the Tenth Trust input into its claim story through the exhibition <i>Treaty 2 U</i> .

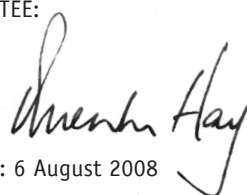
FINANCIAL STATEMENTS

Balance sheet

AS AT 30 JUNE 2008
IN NEW ZEALAND DOLLARS

	NOTE	2008	2007
Assets			
Property, plant and equipment	8	5,019,053	5,131,064
Intangible assets	9	47,297	54,841
Total non-current assets		5,066,350	5,185,905
Inventories		198,831	198,035
Trade and other receivables	10	356,361	201,541
Cash and cash equivalents	11	126,368	139,078
Total current assets		681,560	538,654
Total assets		5,747,910	5,724,559
Equity			
Reserves	12	2,156,691	2,155,547
Retained earnings	12	2,485,282	2,497,160
Total equity		4,641,973	4,652,707
Liabilities			
Interest-bearing loans	13	129,361	198,405
Employee benefits	14	82,620	64,301
Total non-current liabilities		211,981	262,706
Trade and other payables	15	613,568	583,257
Interest-bearing loans	13	111,133	81,473
Employee benefits	14	169,255	144,416
Total current liabilities		893,956	809,146
Total liabilities		1,105,937	1,071,852
Total equity and liabilities		5,747,910	5,724,559

TRUSTEE:



DATE: 6 August 2008

TRUSTEE:



DATE: 6 August 2008

Income Statement

FOR THE YEAR ENDED 30 JUNE 2008
IN NEW ZEALAND DOLLARS

	NOTE	2008	2007
Revenue	4	7,760,432	7,598,629
Other operating income	4	278,472	262,725
Total operating income		8,038,904	7,861,354
Personnel expenses	6	(3,020,111)	(2,896,437)
Depreciation and amortisation expenses	8,9	(419,360)	(435,913)
Other operating expenses	5	(4,676,220)	(4,772,835)
Total operating expenses		(8,115,691)	(8,105,185)
Operating deficit before finance income		(76,787)	(243,831)
Finance income		91,838	75,676
Finance expenses		(25,785)	(31,023)
Net finance income	7	66,053	44,653
(Deficit) for the period		(10,734)	(199,178)

Statement of movement in equity

FOR THE YEAR ENDED 30 JUNE 2008
IN NEW ZEALAND DOLLARS

	NOTE	2008	2007
Equity at the beginning of the year	12	4,652,707	4,851,885
Deficit for the period		(10,734)	(199,178)
Total recognised revenue and expenses for the year		(10,734)	(199,178)
Equity at the end of the year	12	4,641,973	4,652,707

Statement of cash flows

FOR THE YEAR ENDED 30 JUNE 2008
IN NEW ZEALAND DOLLARS

	NOTE	2008	2007
Cash Flows from Operating Activities			
Cash was provided from:			
Receipts from clients and customers		1,890,460	2,101,663
Receipts from related parties		6,001,973	5,636,706
Interest received	7	91,838	75,676
		7,984,271	7,814,045
Cash was applied to:			
Payments to suppliers and employees		(6,151,583)	(6,171,602)
Payments to related parties		(1,472,075)	(1,311,032)
Interest paid	7	(25,785)	(31,023)
Net GST (paid)/received		(8,349)	20,164
		(7,657,792)	(7,493,493)
Net Cash Inflow from Operating Activities	19	326,479	320,552
Cash Flows from Investing Activities			
Cash was applied to:			
Purchase of property, plant and equipment		(299,807)	(145,630)
Net Cash Outflow from Investing Activities		(299,807)	(145,630)
Cash Flows from Financing Activities			
Cash was provided from:			
Hire purchase loan		41,826	-
Cash was applied to:			
Term loan repayments		(81,208)	(74,581)
Net Cash Outflow from Financing Activities		(39,382)	(74,581)
Net (Decrease)/Increase in cash and cash equivalents		(12,710)	100,341
Cash and cash equivalents at 1 July 2007		139,078	38,737
Cash and cash equivalents at 30 June 2008	11	126,368	139,078

NOTES TO THE FINANCIAL STATEMENTS

Significant accounting policies

1) REPORTING ENTITY

The Wellington Museums Trust Incorporated (the Trust) is registered as a Charitable entity under the Charities Act 2005 and domiciled in New Zealand. It is a Council Controlled Organisation (CCO) in terms of the Local Government Act 2002.

The financial statements of the Trust include the activities of the following business units - the Wellington Museums Trust, the Museum of Wellington City & Sea, City Gallery Wellington, Capital E, the Colonial Cottage Museum and the Wellington Cable Car Museum.

The principal activity of the Trust is to manage the Trust facilities and to operate them for the benefit of the inhabitants of Wellington and the public generally.

The financial statements of the Trust are for the year ended 30 June 2008. The financial statements were authorised for issue by the trustees on 6 August 2008.

2) BASIS OF PREPARATION

a) Statement of compliance and basis of preparation

The financial statements have been prepared in accordance with Generally Accepted Accounting Practice in New Zealand (NZ GAAP), applying the Framework for Differential Reporting for entities adopting the New Zealand equivalents to International Financial Reporting Standards, and its interpretations (NZ IFRS). The Trust is a public benefit entity, as defined under NZ IAS 1.

The Trust qualifies for differential reporting exemptions as it has no public accountability and the Trust is small in terms of the size criteria specified in Framework for Differential Reporting. All available reporting exemptions allowed under the Framework for Differential Reporting have been adopted, except for NZ IAS 7, Cash flow Statements.

b) Basis of measurement

The financial statements are prepared on the historical cost basis.

c) Presentation currency

These financial statements are presented in New Zealand dollars (\$).

3) SIGNIFICANT ACCOUNTING POLICIES

The accounting policies set out below have been applied consistently to all periods presented in these financial statements.

a) Property, plant and equipment

Items of property, plant and equipment are stated at cost, less accumulated depreciation and impairment losses.

(i) Subsequent costs

Subsequent costs are added to the carrying amount of an item of property, plant and equipment when that cost is incurred if it is probable that the future economic benefits embodied with the item will flow to the Trust and the cost of the item can be measured reliably. All other costs are recognised in the Income Statement as an expense as incurred.

(ii) Depreciation

Depreciation is charged to the Income Statement using the straight line method. Depreciation is set at rates that will write off the cost or fair value of the assets, less their estimated residual values, over their useful lives. The estimated useful lives of major classes of assets and resulting rates are as follows:

Computer equipment	33% SL
Office and facility equipment	25% SL
Motor vehicles	20% SL
Museum fittings	5%-25% SL
Collections & artefacts	Not depreciated

The residual value of assets is reassessed annually.

Collection and artefacts are carried at cost. A substantial amount of the collection was acquired on 29 February 1996 from the Wellington Maritime Museum Trust. All subsequent purchases are recorded at cost.

Because the useful life of the collections and artefacts is indeterminate they are not depreciated. They are periodically reviewed for impairment. The Trustees obtained a valuation on specific items to support the carrying value at 30 June 2007. The Trustees reconfirmed that the carrying value at 30 June 2008 is appropriate and that no impairment event has occurred.

b) Intangible assets

Computer software

Software applications that are acquired by the Trust are stated at cost less accumulated amortisation and impairment losses.

Amortisation is recognised in the Income Statement on a straight-line basis over the estimated useful lives of intangible assets, from the date that they are available for use. The estimated useful lives for the current and comparative periods are as follows:

Computer software	33% SL
-------------------	--------

c) Trade and other receivables

Trade and other receivables are measured at their cost less impairment losses.

d) Inventories

Inventories (merchandise) are stated at the lower of cost and net realisable value. Net realisable value is the estimated selling price in the ordinary course of business, less the estimated costs of completion and selling expenses.

Cost is based on the first-in first-out principle and includes expenditure incurred in acquiring the inventories and bringing them to their existing location and condition.

e) Cash and cash equivalents

Cash and cash equivalents comprise cash balances and call deposits. Bank overdrafts that are repayable on demand and form an integral part of the Trust's cash management are included as a component of cash and cash equivalents for the purpose of the statement of cash flows.

f) Impairment

The carrying amounts of the Trust's assets other than inventories are reviewed at each balance date to determine whether there is any indication of impairment. If any such indication exists, the assets recoverable amount is estimated.

An impairment loss is recognised whenever the carrying amount of an asset exceeds its

recoverable amount. Impairment losses directly reduce the carrying amount of assets and are recognised in the Income Statement.

Estimated recoverable amount of other assets, e.g. property, plant and equipment and intangible asset, is the greater of their fair value less costs to sell and value in use. Value in use is determined by estimating future cash flows from the use and ultimate disposal of the asset and discounting these to their present value using a pre-tax discount rate that reflects current market rates and the risks specific to the asset. For an asset that does not generate largely independent cash inflows, the recoverable amount is determined for the cash-generating unit to which the asset belongs.

g) Interest-bearing loans

Interest-bearing loans are recognised initially at fair value less attributable transaction costs.

h) Employee benefits

(i) Long service leave

The Trust's net obligation in respect of long service leave is the amount of future benefit that employees have earned in return for their service in the current and prior periods. The obligation is calculated using the projected unit credit method and is discounted to its present value. The discount rate is the market yield on relevant New Zealand government bonds at the Balance Sheet date.

i) Provisions

A provision is recognised when the Trust has a present legal or constructive obligation as a result of a past event, and it is probable that an outflow of economic benefits will be required to settle the obligation. If the effect is material, provisions are determined by discounting the expected future cash flows at a pre-tax discount rate that reflects current market rates and, where appropriate, the risks specific to the liability.

j) Trade and other payables

Trade and other payables are stated at cost.

k) Revenue

(i) Grant funding

The Trust's activities are supported by grants, sponsorship and donations. Grants received that are subject to conditions are initially recognised as a liability and revenue is recognised only when the services are performed or conditions are fulfilled.

(ii) *Services provided*

Revenue from services rendered is recognised in profit or loss in proportion to the stage of completion of the transaction at the reporting date. Income is recognised as the service is provided (e.g. exhibition run). Where exhibitions are not scheduled to run until the following fiscal year, revenue is deferred and amortised to income throughout the period of the exhibition.

(iii) *Sale of merchandise*

Revenue from the sale of merchandise is recognised in the Income Statement when the significant risks and rewards of ownership have been transferred to the buyer. No revenue is recognised if there are significant uncertainties regarding recovery of the consideration due, associated costs or the possible return of the merchandise, or where there is continuing management involvement with the merchandise.

l) Expenses

(i) *Operating lease payments*

Payments made under operating leases are recognised in the Income Statement on a straight-line basis over the term of the lease. Lease incentives received are recognised in the Income statement over the lease term as an integral part of the total lease expense.

(ii) *Finance income and expenses*

Finance income comprises interest income. Interest income is recognised as it accrues, using the effective interest method.

Finance expenses comprise interest expense on borrowings. All borrowing costs are recognised in the Income Statement using the effective interest method.

m) Availability of future funding

The Trust is reliant on the Wellington City Council for a large part of its income and operates under a Funding Deed with the Council. The Funding Deed is for a period of three years and is extended annually for a further year subsequent to the initial 3 year term.

If the Trust were unable to continue in operational existence for the foreseeable future, adjustments may have to be made to reflect the fact that assets may need to be realised other than at the amounts stated in the balance sheet. In addition, the Trust may have to provide for further liabilities that might arise,

and to reclassify property, plant and equipment as current assets.

n) Income tax

The Trust is registered as a Charitable Trust and is exempt from income tax. The Trust is not exempt from indirect tax legislation such as Goods and Services Tax, Fringe Benefit Tax, PAYE or ACC and accordingly it is required to comply with these regulations.

o) Goods and services tax

All amounts are shown exclusive of Goods and Services Tax (GST), except for receivables and payables that are stated inclusive of GST.

4) REVENUE AND OTHER OPERATING INCOME

	NOTE	2008	2007
Wellington City Council operational grant		4,529,898	4,163,304
Wellington City Council rental grant		1,472,075	1,472,075
Ministry of Education contracts for service		208,889	208,889
Creative New Zealand grants		340,850	369,550
New Zealand Lottery Grants Board		37,428	22,396
Other grants, sponsorship & donations	22	148,889	310,600
Admissions income & sales		946,578	995,372
Facility hire		75,825	56,443
Total revenue		7,760,432	7,598,629
Sub-lease income		167,550	180,900
Other income		110,922	81,825
Total other operating income		278,472	262,725
		8,038,904	7,861,354

5) OTHER OPERATING EXPENSES

	2008	2007
Exhibitions & programmes	1,470,966	1,736,767
Rent paid	1,538,179	1,553,170
Marketing & promotions	461,503	491,448
Other occupancy costs	593,595	528,101
Other administration expenses	151,835	145,570
Communication costs	89,088	97,482
Trustee fees & expenses	87,110	63,624
Technology costs	130,935	82,471
Professional fees	121,787	51,969
Auditors' remuneration	31,222	22,233
Fees paid to auditor for other services	-	-
	4,676,220	4,772,835

6) PERSONNEL EXPENSES

	2008	2007
Wages and salaries	3,001,792	2,910,714
Increase/(decrease) in liability for long-service leave	18,319	(14,277)
	3,020,111	2,896,437

7) NET FINANCE COSTS

	2008	2007
Interest income on bank deposits	91,838	75,676
Finance income	91,838	75,676
Interest expense on bank loan	(25,785)	(31,023)
Finance expenses	(25,785)	(31,023)
Net finance income	66,053	44,653

8) PROPERTY, PLANT AND EQUIPMENT

	COLLECTIONS & ARTEFACTS	COMPUTER EQUIPMENT	OFFICE & FACILITY EQUIPMENT	MOTOR VEHICLES	MUSEUM FITOUT	TOTAL
Balance at 30 June 2008						
Cost	2,333,423	211,976	1,570,225	84,616	3,937,047	8,137,287
Accumulated depreciation	-	193,021	1,214,647	26,388	1,684,178	3,118,234
Carrying value	2,333,423	18,955	355,578	58,228	2,252,869	5,019,053
Current year depreciation	-	23,743	173,664	3,054	195,481	395,942
Balance at 30 June 2007						
Cost	2,333,073	406,007	1,316,983	23,334	4,434,738	8,514,135
Accumulated depreciation	-	373,378	1,056,796	23,334	1,929,563	3,383,071
Carrying value	2,333,073	32,629	260,187	-	2,505,175	5,131,064
Current year depreciation	-	32,526	165,805	-	217,160	415,491
Balance at 1 July 2006						
Cost	2,333,073	390,316	1,236,141	23,334	4,434,738	8,417,602
Accumulated depreciation	-	340,852	890,990	23,334	1,712,403	2,967,579
Carrying value	2,333,073	49,464	345,151	-	2,722,335	5,450,023

Restriction over Title to Assets

As stated in the Transfer of Assets Agreement, the Trustees of the Wellington Museums Trust are unable to part with possession of Unclassified Assets without the consent of the Wellington City Council. Unclassified Assets are defined as those items within the Collection and Artefacts that were obtained by the Wellington Harbour Board or the Wellington Maritime Museum Trust between 26 April 1972 and 2 February 1996.

9) INTANGIBLE ASSET

	COMPUTER SOFTWARE
Balance at 30 June 2008	
Cost	249,057
Accumulated amortisation	201,760
Carrying value	47,297
Current year amortisation	23,418
Balance at 30 June 2007	
Cost	298,327
Accumulated amortisation	243,486
Carrying value	54,841
Current year amortisation	20,422
Balance at 1 July 2006	
Cost	249,229
Accumulated amortisation	223,064
Carrying value	26,165

10) TRADE AND OTHER RECEIVABLES

	2008	2007
Accounts receivable	114,162	69,847
Payables from related parties	79,170	-
Prepayments	61,993	114,198
Sundry receivables	90,091	14,900
GST receivable	10,945	2,596
	356,361	201,541

11) CASH AND CASH EQUIVALENTS

	2008	2007
Bank balances	18,834	22,336
Call deposits	107,534	116,742
	126,368	139,078

12) EQUITY AND RESERVES

Reconciliation of movement in equity and reserves

	CAPITAL RESERVE	COLONIAL COTTAGE MUSEUM COLLECTION RESERVE	MUSEUM OF WGTN CITY & SEA COLLECTION RESERVE	CAPITAL E DEVELOPMENT FUND	RETAINED EARNINGS	TOTAL EQUITY
Balance at 1 July 2006	2,122,962	23,895	5,102	80,000	2,619,926	4,851,885
(Deficit) for the period					(199,178)	(199,178)
Transferred to Museum of Wgtn City & Sea Collection Reserve			3,588		(3,588)	
Transferred to Capital E Development Fund	(80,000)	80,000				
Balance at 30 June 2007	2,122,962	23,895	8,690	-	2,497,160	4,652,707
Balance at 1 July 2007	2,122,962	23,895	8,690	-	2,497,160	4,652,707
(Deficit) for the period	(10,734)	(10,734)				
Transferred to Museum of Wgtn City & Sea Collection Reserve	1,144	(1,144)				
Transferred from Capital E Development Fund						
Balance at 30 June 2008	2,122,962	23,895	9,834	-	2,485,282	4,641,973

Capital Reserve

The Capital Reserve was established 29 February 1996 on the transfer from the Wellington Maritime Museums Trust of their collection and artefacts, cash and other sundry office equipment of the Wellington Maritime Museum.

Colonial Cottage Museum Collection Reserve

During the year ended 30 June 2003 The Colonial Cottage Friends Society wound up their society and donated their remaining funds (\$11,948) to the Wellington Museums Trust for the purpose of establishing a collection fund for the Colonial Cottage Museum. The Trust agreed to transfer this and a similar amount to the fund.

Museum of Wellington City & Sea Collection Reserve

During the year ended 30 June 2005 the Trustees decided to place all donations received from the Museum Foundation membership into a collection reserve for future museum acquisitions. A total of \$1,144 was received by way of donations from members during the year ended 30 June 2008 (2007: \$3,588).

Capital E Development Fund

During the year ended 30 June 2006 the Trustees decided to transfer \$80,000 from retained earnings into the Capital E Development Fund to assist with the funding of the Arts Festival. This fund was transferred back to retained earnings in year ended 30 June 2007.

13) INTEREST-BEARING LOANS

	2008	2007
Non-current		
Bank term loan	108,448	198,405
Hire purchase loan	20,913	-
	129,361	198,405
Current		
Current portion of bank term loan	90,220	81,473
Current portion of hire purchase loan	20,913	-
	111,133	81,473

The term loan with the National Bank of New Zealand was taken out on 8 July 2000 for a period of ten years. The current interest rate is 10.73% and is reviewed quarterly based on the 90 day commercial bill rate. The next review is in July 2008. This loan is guaranteed by the Wellington City Council.

The hire purchase loan was taken out, on 28 March 2008, to purchase a van for the Capital E Theatre for Children touring. The loan is over 2 years and is payable in 2 equal installments.

14) EMPLOYEE BENEFITS

	2008	2007
Current		
Payroll accruals	38,556	16,899
Liability for holiday pay	130,699	127,517
	169,255	144,416
Non-current		
Liability for long-service leave	82,620	64,301
	82,620	64,301
	251,875	208,717

15) TRADE AND OTHER PAYABLES

	2008	2007
Trade payables	203,819	155,063
Payables to related parties	41,767	177,474
Revenue in advance	175,544	73,331
ACC premiums	8,995	10,099
Non-trade payables and accrued expenses	183,443	167,290
	613,568	583,257

16) OPERATING LEASES**Leases as lessee**

Non-cancellable operating lease rentals are payable as follows:

	2008	2007
Less than one year	724,204	1,576,703
Between one and five years	1,143,407	1,859,379
More than five years	-	-
	1,867,611	3,436,082

On 8 June 1999, the Wellington Museums Trust signed a 12 year lease agreement with a further 12 year right of renewal with the Wellington City Council for the rental of the Bond Store premises. The current and non-current lease commitments under this agreement are for \$578,050 (2007: \$578,050) and \$1,107,929 (2007: \$1,685,979) respectively. Under the funding deed between the Wellington Museums Trust and the Wellington City Council, the Trust is reimbursed for these costs.

Two of the leased properties have been sublet by the Trust. The lease and sublease expire in 7 June 2011. Sublease payments of \$165,900 are expected to be received during the year ending 2009.

During the year ended 30 June 2008, \$1,581,614 was recognised as an expense in the Income statement in respect of operating leases (2007: \$1,566,497). \$167,700 was recognised as income in the Income Statement in respect of sub-leases (2007: \$165,900).

17) CAPITAL COMMITMENTS

As at 30 June 2008, there are no capital commitments (2007: \$12,950), which have not been accounted for.

18) CONTINGENCIES

There are no material contingent liabilities at balance date (2007: \$nil).

19) RECONCILIATION OF OPERATING SURPLUS TO NET CASH FLOWS FROM OPERATING ACTIVITIES

	2008	2007
Operating Surplus/(Deficit) for the Year	(10,734)	(199,178)
Adjustments:		
Add Non-Cash Items:		
Depreciation and amortisation expense	419,360	435,913
Movements in Working Capital:		
Decrease/(Increase) in Other Current Assets	(155,616)	(32,056)
(Decrease)/Increase in Trade Creditors	48,755	158,384
(Decrease)/Increase in Accruals and Provisions	24,714	(42,511)
Net Cash Inflow from Operating Activities	326,479	320,552

20) RELATED PARTIES

(i) Identity of related parties

The Trust is not related to the Wellington City Council (“the Council”) by shareholding. The Trust was established by, and is reliant upon, the Council for a large part of its income which indicates sufficient reliance on the Wellington City Council, by the Trust, for a related party relationship to exist. Additionally, the Council consolidates the financial results of the Trust for its own reporting purposes.

The Trust operates under a Funding Deed Agreement with the Council which requires the Trust to deliver museum services in accordance with the provisions of the Trust Deed, the Funding Agreement and the Statement of Intent, agreed with Wellington City Council on an annual basis.

The Funding Deed was for a period of three years and is extended annually for a further year subsequent to the initial 3 year term. The rental grant is paid back to the Wellington City Council as rent on properties owned by the Wellington City Council and occupied by the Museum of Wellington City & Sea, Capital E and the City Gallery Wellington.

(ii) Related party transactions

During the year, the Trust entered into related party transactions of the following nature:

	TRANSACTION VALUE YEAR ENDED		BALANCE OUTSTANDING AS AT 30 JUNE	
	2008	2007	2008	2007
Receipts				
Wellington City Council - operational grant	4,529,898	4,163,304	-	-
Wellington City Council - rental grant	1,472,075	1,472,075	-	-
Wellington City Council - miscellaneous	84,171	22,530	79,170	-
Payments				
Wellington City Council - rental	1,472,075	1,472,075	-	138,007
Wellington City Council - miscellaneous	161,679	177,634	41,767	39,467

(iii) Remuneration

Total remuneration is included in “personnel” expenses (see note 6).

	2008	2007
Trustees	87,110	63,624
Executive officers	461,248	413,816
	548,358	477,440

21) OTHER GRANTS, SPONSORSHIP AND DONATIONS

The following other grants, sponsorships and donations were received during the year.

	2008	2007
Capital E		
Asia 2000 Foundation of NZ	2,400	2,500
Booker Spalding Ltd	5,000	5,000
USA Embassy	500	
Community Trust of Wellington	20,000	
Wellington City Council	7,900	5,000
Asia 2000 Foundation of NZ	2,000	
NZ Seafood Industry Council	4,000	8,000
New Zealand Community Trust	30,000	
Lion Foundation	20,000	
Southern Trust	15,000	
Trust House Charitable Trust	514	4,680
The Community Trust of Otago	4,000	
The Community Trust of Mid & South Canterbury	800	
Southland Community Trust	7,000	
Mana Community Grants Foundation	5,000	
Pub Charity	1,500	
Caversham Foundation	10,100	
Winton & Margaret Bear Trust	30,000	
Refund Trustee Executors	(306)	
Phoenix Foundation	5,000	
Pelorus Trust	5,000	
Eastern & Central Community Trust	3,000	
Taranaki Arts Festival	5,000	
New Plymouth District Council	2,414	
Refund Century Foundation	(922)	
Sundry	358	
City Gallery Wellington		
Wellington City Council	4,468	
Suomen Tandeakatemia	536	3,027
City Gallery Wellington Foundation	70,000	80,000
R F Sang	1,000	
Verna Adam	2,000	
David Goddard	1,000	
Enyth Good	800	
Colin Post	2,000	
Trevor & Jan Farmer	1,000	
Mark Hutchins Gallery	3,200	
Colonial Cottage Museum		
Wellington City Council	2,500	
Sundry	50	
Museum of Wellington City & Sea		
Booksellers NZ Ltd	200	
Wellington Waterfront Ltd	5,000	
Wellington Zoo Trust	21,500	
Maritime Friends of the Museum of Wellington City & Sea	844	
Red Earth Productions Ltd	25,893	
Bourail City Council	6,000	
Auction Proceeds	2,514	
General	1,144	1,075
Hills Family Trust	3,300	

Wellington Cable Car Museum		
Community Trust of Wellington	10,000	
Total other grants, sponsorship & donations	148,889	310,600

Other grants, sponsorships & donations for year ended 30 June 2007 included \$123,794 relating to Capital E Arts Festival, which is only held every two years.

23) SUBSEQUENT EVENT

There have been no significant events after balance date that have affected the accuracy of these financial statements.

GOVERNANCE REPORT

GOVERNANCE STRUCTURE & ROLE OF THE BOARD:

The Wellington Museums Trust is a Council Controlled Organisation (CCO) and Trustees are appointed to govern the organisation on behalf of the Council. Trustees are standard bearers for the Trust's vision and are responsible for setting the strategic direction for the Trust and approving the Statement of Intent and the Annual Business Plan. The Board monitors organisational performance and ensures the ongoing viability and competitiveness of the organisation is maintained.

The Board delegates the day-to-day operation of the Trust to the Chief Executive.

BOARD MEMBERSHIP AS AT 30 JUNE 2008:

MEMBERS	APPOINTED	TERM EXPIRES
Viv Beck, Chair*	1 January 2005	31 December 2010
Peter Blades	1 May 2001	31 December 2008
Peter Cullen	1 June 2007	31 December 2009
Quentin Hay	1 January 2007	31 December 2009
Hayley Wain	1 November 2007	31 October 2010
Rhonda Paku	1 January 2008	31 December 2010

* Viv Beck was appointed Chair on 1 January 2008.

BOARD MEMBERS WHO RETIRED DURING THE YEAR		
Bill Brien	30 April 1999	31 December 2007
Simon Marsh	1 January 2001	31 December 2007
Helene Ritchie	5 November 2004	31 October 2007

BOARD OPERATIONS:

The board meets no fewer than nine times per year unless a lesser number of meetings is agreed on by trustees. It operates the following subcommittees:

BOARD COMMITTEES:

Strategy - This committee has been established to provide guidance and support to the Chief Executive in the successful devolvement of the Trust's vision and key objectives. The committee will meet on an "as required" basis.

People Planning & Performance - This committee has been established to assess the performance of the Chief Executive and senior management; and to provide guidance and support to the Chief Executive in change and people-management. The committee will meet on an "as required" basis.

Audit & Finance - The Audit and Finance Committee meets at least twice a year. It reviews and recommends the Draft Financial Plan and Annual Report to the full Trust.

MEETING ATTENDANCE:

TRUSTEE	MEETINGS ELIGIBLE TO ATTEND	MEETINGS ATTENDED
Viv Beck, Chair	11	10
Peter Blades	11	7
Peter Cullen	11	8
Quentin Hay	11	11
Hayley Wain	8	7
Rhonda Paku	6	5
Bill Brien	5	5
Simon Marsh	5	5
Helene Ritchie	3	2

OUR SUPPORTERS

Wellington Museums Trust institutions enjoy support from a wide range of individuals and organisations through partnerships for exhibitions and public programmes; sponsorships, donations and grants; and Friends organisations and volunteers. We gratefully acknowledge the support of the following: the Wellington City Council – principal funder of the Trust; Creative New Zealand – principal funder of the Capital E National Theatre for Children; Ministry of Education – Learning Experiences Outside the Classroom at Capital E; City Gallery Wellington and the Museum of Wellington

CITY GALLERY WELLINGTON SUPPORTERS

City Gallery Wellington Foundation Trustees and Members

HONORARY LIFE BENEFACTORS

Denis & Verna Adam; Dr Roderick & Gillian Deane; Michael Hirschfeld Family

Corporate Principal Benefactors

ANZ; Ernst & Young

Corporate Benefactors

Assignment; Designworks Enterprise IG

Corporate Principal Patron

Chartwell Trust

Corporate Patrons

Comfort Hotel Wellington; Museum Hotel; Parkview Motorcamp; and Radio Live

Individual Patrons

Hon Justice Lowell Goddard & Chris Hodson QC; Han & Jenny Klisser; Lloyd Morrison & Julie Nevett; John Allen & Janie Pack; Paul & Sheryl Baines; Deborah & Peter Cutfield; Nigel Williams & Rae-ann Sinclair; Bill Patterson & Robyn Hopkins; John Judge & Janet Clarke; Gerald & Kate Parsonson; Alan Judge & Catherine Shaw; John & Donna Heginbotham; Ian Cassels & Caitlin Taylor; James & Sarah Hall; Simon Robinson & Angela Corn; Catherine Savage & Glenn Stewart; and Stuart Gardyne & Janie Christopherson.

Friends of City Gallery Wellington

The Friends of City Gallery Wellington are an important organization providing ongoing support for the Gallery's work. They are loyal advocates for the Gallery and are able to experience new exhibitions and Gallery activity first-hand. Special opportunities to hear artists and curators are offered at the beginning of each

new exhibition season. Friends also receive regular communications about events and receive discounts to lecture series, forums and also on publications.

EXHIBITION SPONSORS, SUPPORTERS AND PATRONS

Hany Armanious: Morphic Resonance

Principal Sponsor: Ernst & Young

Supported by the Institute of Modern Art, Brisbane, and Michael Lett, Auckland

Salla Tyykka: Cave and Zoo

Principal Sponsor: Ernst & Young

Supported by FRAME – Finnish Fund for Art Exchange and the Dunedin Public Art Gallery

Laurence Aberhart

Principal Sponsor: Ernst & Young

Supported by Creative New Zealand, the Dunedin Public Art Gallery, Victoria University Press, Auckland Art Gallery Toi o Tāmaki

Te Huringa/Turning Points. Pākehā Colonisation and Māori Empowerment

Principal Sponsor: ANZ

Supported by the Fletcher Collection, Auckland; Sarjeant Gallery Te Whare O Rehua Whanganui; Te Puni Kokiri; and the Wellington Tenths Trust & Te Ati Awa.

Denis O'Connor: What the Roof Dreamt

Principal Sponsor: ANZ

Supported by Two Rooms Gallery, Auckland.

Contemporary Projects

Principal Sponsor: ANZ

Bill Hammond: Jingle Jangle Morning

A Christchurch Art Gallery Te Puna o Waiwhetu touring exhibition, sponsored by Ernst & Young with the City Gallery Wellington exhibition generously supported by TNS Conversa.

Tracey Moffatt: Doomed and Love

Rosyln Oxley9 Gallery, Sydney, Australia.

Reboot: The Jim Barr and Mary Barr Collection

Principal Sponsor: Ernst & Young

Supported by the Dunedin Public Art Gallery

Aniwaniwa: Brett Graham and Rachel Rakena

Principal Sponsor: Ernst & Young

Supported by Two Rooms Gallery, Auckland and Bartley and Company Art, Wellington.

Last Riot AES+F

Principal Sponsor: Ernst & Young

Supported by Dr. Dick Quan, Sydney, Australia, Triumph Gallery, Moscow and Multimedia Art Center, Moscow

PUBLIC PROGRAMMES

Partners: The New Zealand Film and Television School; Gateseven; The Fletcher Collection; Native Movement Alaska & Conscious Collaboration; Objectspace; Taki Rua Productions; Footnote Dance Company; Huia Publishing; International Visitors Programme (Creative New Zealand & Artspace, Auckland); Muka Youth Prints, Victoria University of Wellington Art History; Continuing Education; International Institute of Modern Letters; Wellington City Council Intersect – young professionals network for sustainability; Threedollarpictures; Toi Maori and Te Roopu Raranga Whatu o Aotearoa.

Michael Hirschfeld Gallery

Principal Sponsor: Designworks Enterprise IG

Colourcraft; Publication & Design; Wellington City Council; DAC; Resolution Print' Cuba Street Carnival; Sustainable Business Network.

Marketing

Assignment and Parkview Motorcamp.

Accommodation

Museum Hotel and Comfort Hotel Wellington.

MUSEUM OF WELLINGTON SUPPORTERS

Maritime Friends of the Museum of Wellington

President William Pitt

The Maritime Friends support the Museum by providing a series of talks on the second Tuesday of the month from February to November each year and field trips with a maritime interest. The Maritime Friends provided funding towards a new scanner for digitising the Trust collection.

Wellington Historical & Early Settlers' Association

President Vonnice Nunns

The Wellington Historical & Early Settlers' Association provide a regular series of talks at the Museum on Wellington's early settlement. Once a year they hold the James Worsfold lecture in recognition of the scholarship they provide to a Victoria University of Wellington history student. For 2007 the lecture was given by

Andrew Francis on the subject of 'Patriotism and Citizenship: a study of New Zealand anti-alienism during the Great War'.

Volunteers

Museum volunteers make an important contribution to the work of the Museum of Wellington. In 2007/08 sixteen volunteers worked on the collections and eight undertook various other tasks at the Museum. Volunteers provide support to our work cataloguing the Trust Collection from subject expertise to photography and data entry of information on the database system. These volunteers also selected an object for the Museum's exhibition *Our Choice*, an exhibition to celebrate International Museum's Day. The Museum volunteers have worked as hosts during our exhibition *The Gallery of Helen Hitchings*, on specific projects (including developing activity sheets for visiting children) or on our book sales. Over 3,500 hours over the past year have been provided by our volunteers.

The Museum of Wellington also acknowledges the support of the New Zealand Lottery Grants Board; Wellington Photographics Ltd; New Zealand Ship & Marine Society; New Zealand Community Trust; Meridian Energy; the Ministry of Education; Go Wellington; the Maritime Archaeological Association of New Zealand; the New Zealand Ship and Marine Society; the New Zealand Film Archive Nga Kaitiaki O Nga Taonga Whitiwhia; New Zealand Post Wellington branch, Book Awards for Children & Young Adults; the Carter Observatory; Walk Wellington; Wellington City Council; Wellington Repertory Theatre; Alison Golder; Wellington Waterfront Limited; Wellington Cable Car; NZ Playcentre Association; Paul Diamond; Nota Bene Choir; Vector Wellington Orchestra String Quartet; Adrian Muckle; Chris MacLean; Jane Vial; Ian Hunter; Murray Henderson; Ian MacGibbon; Brian Davis; Voice Arts Trust.

PUBLIC PROGRAMMES

Wahine 40th Commemoration

Strait Shipping Limited (Bluebridge Ferry); Frank Hitchings; Peter Beale; Philip Dickson; Kay McCormick; Tony Cord; Dean Frank Nelson of Wellington Cathedral of Saint Paul; Phil Dickson; Tower New Zealand Youth Choir

Dancing with Niaouli Trees

Footnote Dance Company

Pakiwaitara

Toi Whakaari: New Zealand Drama School

EXHIBITIONS

Alfred, Mabel & Charles

Hill Family Trust; New Zealand School of Music (a joint venture involving Massey University & Victoria University of Wellington), PianoShop Plimmerton, Allan Stiles; Alexander Turnbull Library; Alfred Hill Trust; Alfred Hill Estate; Auckland Museum; Marie Burnette; Errol Clark; Martin Everton; Meg Everton; Kate Hill; Hills Hats; Donald and Carole Mason; Mitchell Library; National Library of Australia; The New Zealand Film Archive Nga Kaitiaki O Nga Taonga Whitiāhua; New Zealand House of Representatives; Radio New Zealand Sound Archive; Wellington City Council Archives.

War in Paradise

New Caledonia New Zealand Season 2007 supported by the Government and Provinces of New Caledonia and France through the Fonds Pacifique. Association Passé de Bourail, Musée de Bourail, Archives New Zealand/ Te Rua Mahara o te Kawanatanga, Embassy of France, Victoria University of Wellington

The Gallery of Helen Hitchings

Alexander Turnbull Library; Auckland Art Gallery; Christchurch Art Gallery; City Gallery Wellington; Hawke's Bay Museum & Art Gallery; Hocken Library; University of Otago; Museum of New Zealand Te Papa Tongarewa; Victoria University Faculty of Education; Victoria University of Wellington Art Collection; Bill Alington; John Ashton; Helen & Tim Beaglehole; Gary & Margery Blackman; Lisa Docherty; John Drawbridge Estate; ARD Fairburn Literary Estate; Pat Fry; John Haydn; Terence Taylor; Jenny Horne; Douglas Lloyd Jenkins; Bryan Lang; Peter McLeavey Gallery; Frances Porter; Peter Shaw; Dr Peter Wood.

Innocents Abroad

Touring in collaboration with the Museum of New Zealand Te Papa Tongarewa.

Re-Telling Tales

Massey University; New Zealand Film and Television School; *Contemporary Translation in Jewellery* Whitireia Community Polytechnic; and *Found Beneath the Bypass* Wellington Institute of Technology (WelTec).

Community exhibitions

Our Choice – Museum Volunteers; *It is rocket science* – New Zealand Playcentre; *Fishy Art* – Ministry of Fisheries; *BioBlitz Otari* – Wilton's Bush Trust.

CAPITAL E SUPPORTERS

Capital E McKenzie Theatre

Sir Roy McKenzie Foundation

Capital E National Theatre for Children

Creative New Zealand; Booker Spalding Limited; *The Dominion Post*; Caffè L'affare; Playmarket Incorporated; The Interislander; MJF Lighting; The Asia New Zealand Foundation; New Zealand Seafood Industry Council.

National tours of Songs of the Sea in 2007 and Kiwi Moon in 2008

Community Trust of Southland; Eastern & Central Community Trust; Trust House; Community Trust of Otago; TSB Community Trust; Community Trust of Mid and South Canterbury

Capital E Events

Asia Events Trust; *The Dominion Post*; Wellington Circus Trust; Asia New Zealand Foundation; Gifted Kids Programme Incorporated; New Zealand Children's Film Foundation; National Roadshow Trust; MJF Lighting; New Zealand Book Month; Cuba Street Carnival; Wellington Fringe Festival; New Zealand Comedy Festival; New Zealand Raptor Association; Strike Percussion Limited; Museum of New Zealand Te Papa Tongarewa; WACOM Company Limited; Safer Cities; Storylines Festival; Goethe Institute; Jigsaw Children's Charity.

Creative Technology

Triangle Television; The Interislander; Sir Roy McKenzie and family; Sony New Zealand Limited; WACOM Company Limited.

WELLINGTON CABLE CAR MUSEUM SUPPORTERS

Wellington Cable Car Heritage; New Zealand Lottery Grants Board; Environment and Heritage Committee; Community Trust of Wellington; Go Wellington

COLONIAL COTTAGE MUSEUM SUPPORTERS

Go Wellington; Volunteers and supporters of the Cottage.

NEW ZEALAND CRICKET MUSEUM SUPPORTERS

New Zealand Cricket; The National Bank, New Zealand Community Trust; Lion Foundation; Pub Charity; and volunteers

Directory

TRUSTEES

Viv Beck, Chair
Peter Blades
Peter Cullen
Quentin Hay
Hayley Wain
Rhonda Paku

WELLINGTON MUSEUMS TRUST

Pat Stuart, Chief Executive
Registered Office: c/o Simpson Grierson
HSBC Tower, 195 Lambton Quay, Wellington
Trust Office: level 2, The Bond Store
Queens Wharf, PO Box 893, Wellington
P: 471 0919, F: 471 0920
E: trust@wmt.org.nz
www.wmt.org.nz
Auditors: KPMG, Wellington
Bankers: National Bank of New Zealand,
Wellington Commercial
Legal advisers: Simpson Grierson, Wellington

City Gallery Wellington

Paula Savage, director
Civic Square
101 Wakefield Street
PO Box 2199, Wellington
P: 801 3021, F: 801 3950
E: citygallery@wmt.org.nz
www.city-gallery.org.nz

Museum of Wellington City & Sea

Brett Mason, director
Queens Wharf
PO Box 893, Wellington
P: 472 8904, F: 496 1949
E: museumofwellington@wmt.org.nz
www.museumofwellington.co.nz

Capital E

Stuart Grant, director
Civic Square
101 Wakefield Street
PO Box 3386, Wellington
P: 913 3720, F: 384 8615
E: capitale@wmt.org.nz
www.capitale.org.nz

Wellington Cable Car Museum

Emmanuel Makarios, manager
1 Upland Road
PO Box 893, Wellington
P: 475 3578, F: 475 3594
E: cablecar@wmt.org.nz
www.cablecarmuseum.co.nz

Colonial Cottage Museum

Emmanuel Makarios, manager
68 Nairn Street
Wellington
P: 384 9122, F: 384 9202
E: colonialcottage@wmt.org.nz
www.colonialcottagemuseum.co.nz

New Zealand Cricket Museum

David Mealing, manager
The Old Grandstand, Basin Reserve
PO Box 578
Wellington
P: 385 6602, F: 384 3498
E: cricket@wmt.org.nz
www.nzcricket.co.nz

