

Proposed speed limit changes – Takapu Road and Tawa Interchange

**Find out more
and tell us what
you think**

Wellington City Council is proposing to reduce speed limits on Takapu Road and around the Tawa Interchange in response to safety concerns from local residents and businesses.

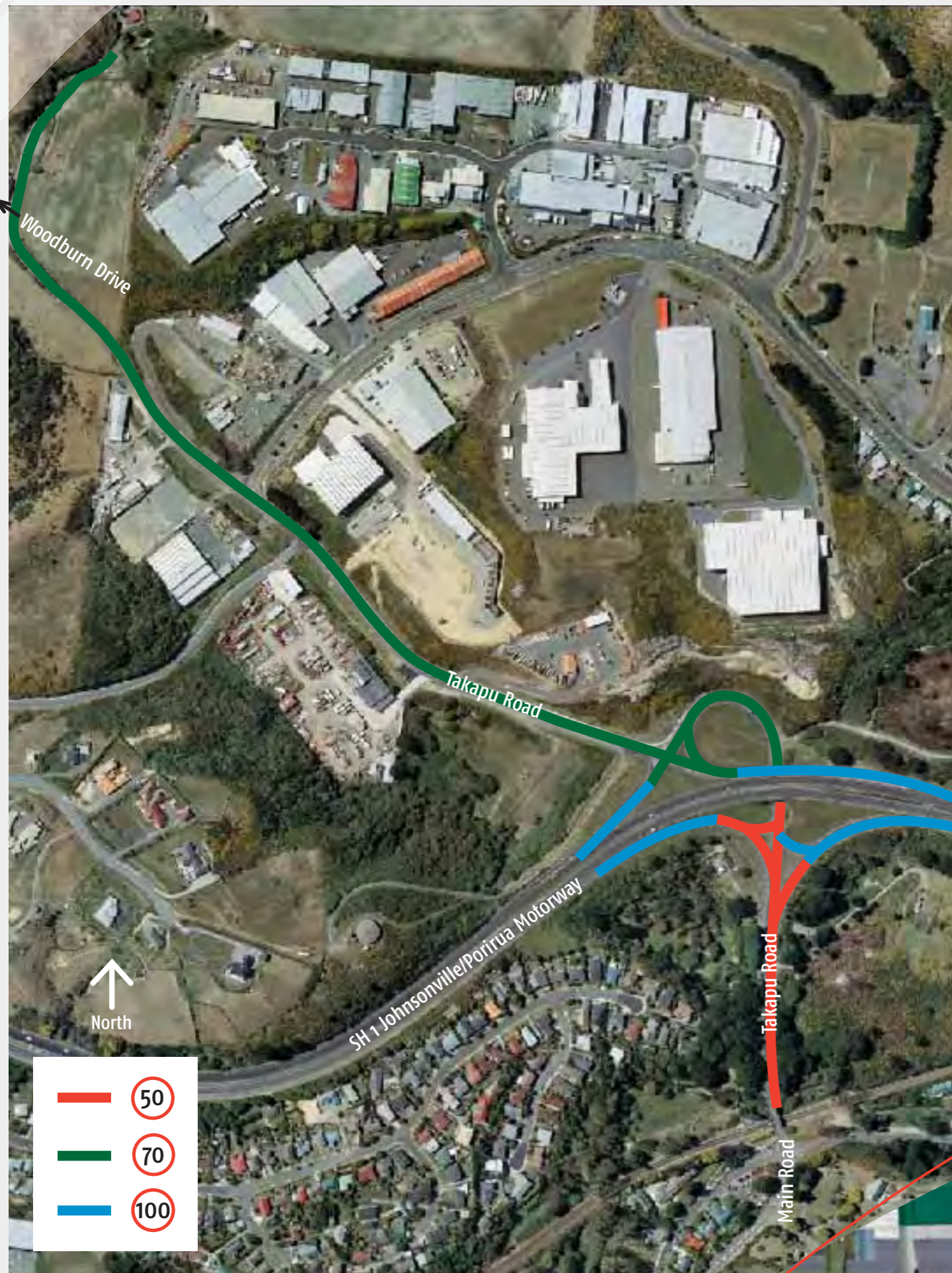
This brochure explains what's planned and why and how you can comment on the proposal. Feedback is required by 28 April 2008.

TRANSIT
NEW ZEALAND
ARARAU AOTEAROA

Absolutely

POSITIVELY

ME HEKE KI PŌNEKE
WELLINGTON CITY COUNCIL **Wellington**



Background

Wellington City Council has received a number of requests from members of the public to reduce the speed limit along Takapu Road and on the Tawa Interchange on and off-ramps, due to safety concerns.

Takapu Road has experienced an increase in traffic due to recent residential developments. This has increased the number of turning movements made by vehicles on and off Takapu Road.

There has been a steady increase in the number of crashes reported to Police in recent years, with 22 crashes in the five-year period 2002 to 2006.

Proposal

The Council is proposing to reduce the speed limits along sections of Takapu Road and around the interchange as follows:

- From 100kmh to 70kmh from the Tawa interchange to 60m east of Woodburn Drive.
- From 100kmh to 50kmh from the motorway northbound off-ramp to Main Road Tawa.
- From 100kmh to 50kmh from Main Road Tawa to the motorway northbound on-ramp.
- From 100kmh to 70kmh on the motorway southbound on-ramp from the western portal of the motorway underpass to the motorway itself.
- From 100kmh to 70kmh from the southbound motorway off-ramp to western portal of the motorway underpass.

The proposed restrictions will apply to all vehicles at all times and cover a distance of about 2.2km. The speed reduction is considered safer and more appropriate and is in line with the speed many motorists already travel in this area. Research shows that for every 1kmh that speeds are lowered there will be a 2 to 3 percent reduction in the number of crashes. Lowering the speed limit will also reduce the severity of the crashes.

The proposed speed-limit reduction is part of the Council's SaferRoads project to reduce the number of crashes throughout the city.

Consultation

Before the Council can make any changes to the speed limits, consultation with affected parties must take place.

The speed-limit consultation is being carried out under Wellington City Council's speed-limit bylaw. Submissions on the proposal can be made online at www.Wellington.govt.nz, by filling in the submission form and posting it back to the Council. Brochures containing submission forms are also available at libraries and Council service centres.

There will be a meeting on Wednesday 16 April at 7pm at Tawa Community Centre, 3-13 Cambridge Street, Tawa, to discuss proposed changes.

You are also welcome to make an oral submission to the Council.

Having considered all written and oral submissions, the Council will make a final decision. If the Council decides to proceed with the planned speed reductions, the new speed limits are likely to be in place by late 2008.

