

DRAFT NORTHERN RESERVES  
MANAGEMENT PLAN

November 2007

Draft Northern Reserves Management Plan .....	3
1 Introduction .....	3
1.1 Purpose of this Plan .....	3
1.2 Northern Reserves .....	3
1.3 Structure of the Northern Reserves Management Plan .....	5
1.4 Vision.....	6
1.5 Strategic Fit .....	7
1.6 Key Guiding Plans .....	8
1.7 Other Relevant Policies and Plans .....	12
1.8 Status of this Plan.....	15
2 Landscape .....	17
2.1 Existing Conditions .....	17
2.2 Issues and Opportunities .....	21
2.3 Objectives.....	26
2.4 Policies .....	26
3 Ecology .....	27
3.1 Existing conditions.....	27
3.2 Issues and Opportunities .....	29
3.3 Objectives.....	38
3.4 Policies .....	38
4 Recreation .....	41
4.1 Existing Conditions .....	41
4.2 Issues and Opportunities .....	50
4.3 Objectives.....	56
4.4 Policies .....	56
5 Tracks and Access .....	58
5.1 Existing Conditions .....	58
5.2 Issues and Opportunities .....	60
5.3 Objectives.....	63
5.4 Policies .....	63
6 Culture and History .....	64
6.1 Existing Conditions .....	64
6.2 Issues and Opportunities .....	68
6.3 Objectives.....	69
6.4 Policies .....	69
7 Administration .....	70
7.1 Objectives.....	70
7.2 Policies .....	70
8 Management Sectors.....	79
8.1 Tawa.....	79
8.2 Takapu Valley , Tawa east .....	87
8.3 Churton Park, Stebbings, Glenside .....	92
8.4 Grenada North, Paparangi, Newlands.....	104
8.5 Johnsonville.....	114
8.6 Harbour Escarpment .....	119
9 Implementation Plan .....	123

# Draft Northern Reserves Management Plan

## 1 Introduction

### 1.1 Purpose of this Plan

The purpose of the Northern Reserves Management Plan (NRMP) is to provide Wellington City Council with a clear framework for day to day management and decision making for the Council owned reserves and open spaces in the northern area (northern reserves) for the next 10 years. Objectives and policies give guidance for the development, management, protection, operation and public use of the northern reserves.

A primary objective of the NRMP is to ensure that the local and wider connections, recreational and ecological, are well integrated as development proceeds. The extent, location, form, and connectedness of open space at the local as well as the wider landscape scale are key determinants of visual amenity values as well as the wider landscapes character and quality.

Specifically it will:

- Manage reserves in a consistent manner by providing common objectives and policies.
- Ensure appropriate protection and management for important natural, recreation, historical and cultural values on Council owned reserve land and open space.
- Provide prioritised strategic management initiatives.
- Provide a framework to achieve connectivity and sustainability in and between the northern reserves.

### 1.2 Northern Reserves

The northern area is defined as the north western corridor from Ngauranga Gorge to the south of Porirua. It is bounded by Spicers, Ohariu and Totara Ridges in the west and the Horokiwi Ridge and Harbour escarpment in the east. This plan covers the management and planning of Council owned reserves and open spaces within the northern area.

*Insert Map 1 Northern Reserves Management Area*

The northern reserves are not a single entity but rather a number of different reserves from large rural character blocks, important landscape and ecological areas, local parks, esplanade strips and accessways. There are 106 reserves and Council owned open spaces in the area spread throughout 12 suburbs – Tawa, Takapu Valley, Grenada North, Glenside, Grenada Village, Churton Park, Paparangi, Woodridge, Horokiwi, Newlands, Johnsonville and Ngauranga.

Nearly half of these are local parks, a quarter are ecological areas with 13 sportsfields, and 4 community parks.

There are some areas that are reserve within the northern area but are excluded from this plan:

- The Outer Green Belt has its own management Plan (Wellington's Outer Green Belt Management Plan - OGBMP)
- A 105 hectare bush area (site off Horokiwi Road) is managed by Greater Wellington as part of Belmont Regional Park.

In addition the Plan will include the following:

- The plan will not provide specific management direction for private land but may provide advocacy recommendations.
- An analysis of sportsfield use and future demand is being undertaken as part of a review of the Sportsfield Asset Management Plan. A summary of the findings are included in this plan.
- Areas of legal road that are not covered by the formed carriageway (known as road reserve) of the following roads: Takapu Road, Main Road Tawa

### **1.3 Structure of the Northern Reserves Management Plan**

In order to provide a framework to achieve connectivity and sustainability in the northern reserves, this Plan is principally structured around five key themes:

1. Landscape
2. Ecology
3. Recreation
4. Tracks and access
5. Culture and History

While the Plan is structured around themes, the area is divided into sectors for the purposes of implementation and ease of understanding for local communities. These sectors are:

1. Tawa
2. Takapu Valley, eastern Tawa
3. Churton Park, Glenside, Stebbings
4. Grenada North, Paparangi, Newlands
5. Johnsonville

## 6. Harbour Escarpment

### 1.4 Vision

The northern reserves will provide for the reserve requirements of the local communities and contribute to the wider open space and reserve needs of Wellington where appropriate.

#### 1.4.1 Landscape

- Protect the natural character of reserve areas to maintain the unique landscape of the northern areas.
- Protect and enhance corridors of vegetation to provide coherence and unifying themes across the landscape.

#### 1.4.2 Ecology

- Ensure the protection of streams, forest remnants and other important ecosystems
  - The reserve network comprises representative examples of the existing indigenous biodiversity of the northern area.
  - The biodiversity of the northern area is protected, enhanced and functions as a well connected system.
  - Pest plants and animals are controlled efficiently and effectively.
  - Changes and influences to the health of streams, forest remnants and other important ecosystems are monitored and acted upon appropriately.
  - Landowners are motivated, inspired and educated to protect biodiversity on their own land.
- Restore and enhance streams, forest remnants and other important ecosystems
  - Continuous riparian cover alongside all streams that run through reserves.
  - Restoration is carried out to improve ecological connectivity and to enhance existing ecosystems.
  - Communities are motivated, inspired and educated to get involved in conserving biodiversity.

#### 1.4.3 Recreation

- Provide outdoor recreational opportunities and experiences that are environmentally and socially sustainable and accessible to communities.
- Ensure the provision of recreational opportunities and experiences keeps pace with population growth in the north.

#### 1.4.4 Tracks and Access

- Develop a quality primary network accessing major destination points in the northern area, and linking with an equitable distribution of secondary and local track networks and recreational facilities.
- Ensure that the network provides for a range of user interest, skill, abilities and fitness levels.

#### 1.4.5 Culture and History

- Recognise, protect and interpret the historical and cultural site features and values of the northern reserves.
- Facilitate and enable the exercise of tino rangatiratanga and kaitiakitanga by Wellington's tangata whenua and other Maori.

#### 1.4.6 Administration

- Manage the northern reserves in a manner that reflects their reserve purpose or proposed purpose, site values and the vision and objectives for the northern reserves while providing for opportunities for the enjoyment of suitable areas for appropriate activities.

### 1.5 Strategic Fit

In 2005 Council adopted seven strategies to guide all its activities and business. Of these the Environment and Social and Recreation Strategies are of most relevance to this plan.

#### 1.5.1 Environment Strategy

The Northern Reserves Management Plan sits primarily under this strategy and the following outcomes guide this management plan:

- *More liveable:* Wellington's natural environment will be accessible to all for a wide range of social and recreational opportunities that do not compromise environmental values;
- *Stronger sense of place:* Wellington will recognise and protect significant features of its coastal and terrestrial landscape and natural heritage;
- *More actively engaged:* Wellington will pursue a collaborative participatory approach towards environmental kaitiakitanga (guardianship) by sharing information within the community and establishing partnerships to achieve environmental goals;
- *Better connected:* Wellington will have a network of green spaces and corridors linking the coastline, Town Belt and Outer Green Belt;
- *Healthier:* Wellington will protect and restore its land – and water based ecosystems to sustain their natural processes, and to provide habitats for a range of indigenous and non-indigenous plants and animals;

- *More competitive:* Wellington's high quality natural environment will attract more visitors, residents and businesses.

## 1.5.2 Social and Recreation Strategy

The overall goal of this strategy is to build safe and healthy communities for a better quality of life. Of particular relevance to this plan is the aim to promote participation in recreation and sport through the continued provision of facilities including playgrounds and sportsfields.

## 1.6 Key Guiding Plans

There are two key guiding documents that provide the context for the Northern Reserves Management Plan.

### 1.6.1 Capital Spaces, 1998

The need for a comprehensive plan for the city's open space resulted in the publication of *Capital Spaces – Open Space Strategy for Wellington, Te Whanganui-a-Tara*. Before the development of the NRMP, *Capital Spaces* provided the most detailed description of what the northern reserves vision was about.

*Capital Spaces* provides directions for an integrated approach to managing the natural and recreational environment, including recognition of important landscape values.

Guiding principles include:

- enhancing natural succession
- developing better recreational networks and ecological corridors
- protecting threatened species
- reducing fire hazards
- protecting the coast and streams
- the role of open space in managing the city's urban form
- responding to increasing urban density
- taking opportunities for improving the open space network
- promoting outdoor recreation and healthy lifestyles
- balancing recreation and the natural environment.

*Capital Spaces* also established an open space concept that reflects spatially the different characteristic landscapes of the city - from the harbour to the rural hinterland. This 'spectrum' of proposed open spaces includes the following main categories:

- the city
- the bays
- suburban open spaces
- inner green belts
- outer green belt
- rural hinterland

- wild coast
- harbour and coast.

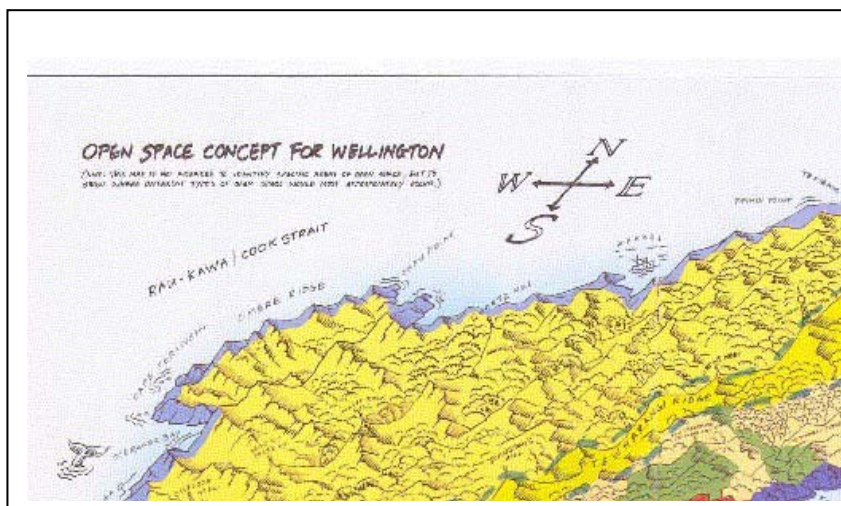
Although not referred to specifically as the “Northern Area”, *Capital Spaces* identifies the northern reaches of Wellington primarily as a conglomerate of suburban open spaces and rural hinterland. They may be described as:

***Suburban Open Spaces: Accessible open spaces close to people’s homes which provide a flexible range of recreational opportunities and which provide green spaces that contribute to the identity of the suburb.***

***Rural Hinterland: a scenic rural environment where rural land users are interwoven with a network of restored natural ecosystems and informal recreational accesses***

This Plan further explores the issues and opportunities for the northern reserves area that are conceptualised in *Capital Spaces* and develops objectives, policies and actions for their implementation.

Figure 1. Open Space Concept for Wellington



### 1.6.2 The Northern Growth Management Framework 2003

The Northern Growth Management Framework (NGMF) provides a strategy for the future development of the northern part of Wellington city. It provides the communities, landowner’s, developers and Wellington City Council a set of goals and an agreed process for planning urban expansion.

Wellington City Council decided during its Strategic Review in 2000/01 to create a growth management plan for the northern area. The immediate pressure for new urban development in the Wellington region is in the northern areas, from Johnsonville through to the Kapiti Coast.

The vision for the North is that Wellington’s northern suburbs will continue to develop as an integrated, liveable, diverse, sustainable and prosperous community. This means that the protection of significant landscape,

ecological and natural features of the area is a foundation of sustainable urban living.

The northern area may be defined as the north-western corridor on both sides of State Highway 1 north of the Ngauranga Gorge and south of Porirua. It is bounded by the Spicers, Ohariu and Totara ridges in the west and the Horokiwi ridge and Western Harbour Hills in the east.

The northern area is a vital hub for the region as a whole. It is central to the larger Wellington urban area, and is well-connected with road and rail links. New developments could help improve the connections and facilities available to people in existing residential and industrial areas. Undeveloped and rural areas contain noteworthy streams, gullies, remnant vegetation, ridgelines and hilltops that merit protection and careful management.

Figure 2 shows the northern area with its existing residential settlement, town centres, road and rail links and significant features. It also indicates areas for future growth.<sup>1</sup>

Current projections by the Greater Wellington Regional Council show a likely population increase in the northern suburbs of 5,000 in the next 20 years. If current growth rates are maintained, however, this is more likely to reach 10,000.<sup>2</sup>

Several inter-linking themes underpin the Framework's vision. The themes are supported by values and principles. All are based on the premise of building on existing communities, which is the key growth strategy.

- Liveability: supporting existing communities and ensuring a quality urban form for a quality lifestyle
- Sustainability: managing growth in a sustainable way and responding to our environment
- Accessibility: making it easy to access services and amenities – for work, pleasure, support
- Connectivity: integrating the movement network and enhancing linkages within and between communities and to the city and region
- Prosperity: providing a climate for commercial enterprises and local businesses to thrive

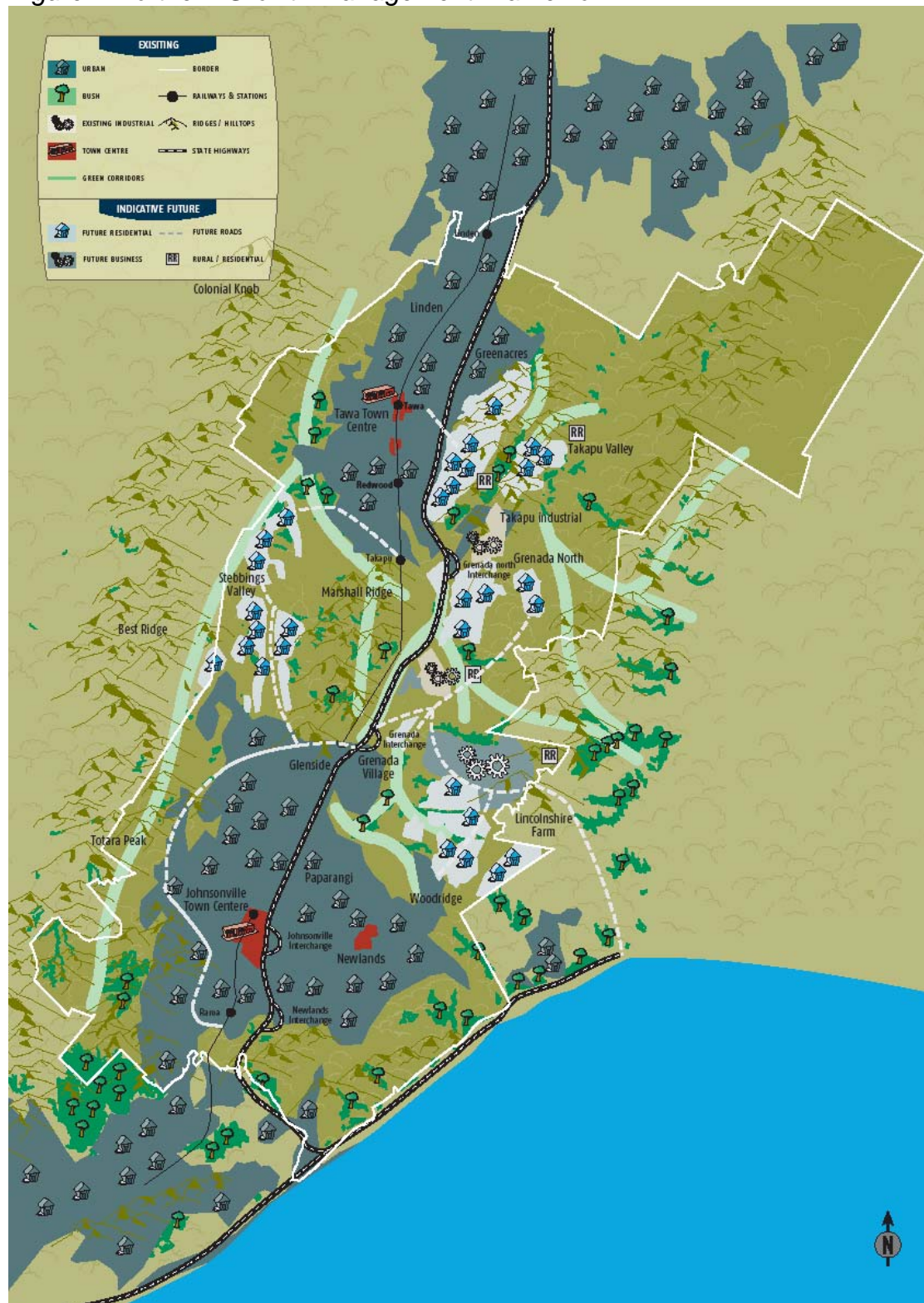
The aim is to manage urban growth to ensure the city's development is sustainable. That means managing urban expansion and urban form to reduce the costs on the community and the environment. This can be achieved by making sure that any expansion of urban areas supports existing centres and makes efficient use of infrastructure, while building up open space areas to set clear distinctions between urban, rural and natural zones.

---

<sup>1</sup> Northern Growth Management Framework 2003

<sup>2</sup> Northern Growth Management Framework 2003

Figure 2 Northern Growth Management Framework



## 1.7 Other Relevant Policies and Plans

Other Plans that provide guidance in the development of this plan are:

### 1.7.1 Outer Green Belt Management Plan 2004

The OGBMP ensures the protection of a coherent and essentially natural western ridge line, and provides for public recreation. The long term strategy is to provide public access from the south coast to Porirua City and Colonial Knob, and eventually north on the national Te Araroa Walkway. It has the following principles:

- *Landscape and landform: To recognise and protect natural landscape and landform characteristics of the ridge system on the western side of the city.*
- *Indigenous ecosystems and important ecological features: To recognise and protect indigenous ecosystems and important ecological features, and in particular the streams and significant areas of indigenous vegetation from which a more continuous band of vegetation will grow.*
- *Recreational places and linkages: To identify and protect important existing or potential recreational sites and linkages (entrance points, tracks, routes and destinations).*
- *Cultural and historic places: To recognise and protect important cultural and historic places and features identified within the Outer Green Belt.*
- *Urban environment edge: To provide a western edge to the urban environment and a buffer of mainly open lands between the city's urban areas and the rural areas of Makara and Ohariu valleys.*
- *Continuity and integrity: To achieve continuity and integrity in the definition and management of the Outer Green Belt.*

### 1.7.2 Open Space Access Plan 2004

This Plan sets out Council's strategic vision for tracks in the city's parks, reserves and open spaces. The Plan's vision is to *strengthen and improve the open space access network through a plan that will:*

- *Provide outstanding opportunities for recreation and tourism within the open spaces of Wellington*
- *Ensure that tracks provide for a range of user interests, skills, abilities and fitness levels within each area*
- *Achieve a quality primary network accessing major destination points in Wellington and adjoining districts, and linking with an equitable distribution of secondary and local track networks and recreational facilities.*

Ten major track initiatives are proposed in the Plan. Of relevance to the northern area include:

- The Northern Network – a track network for the northern suburbs.

- The Harbour Escarpment Walk – from Waihinahina Park to Ngauranga Gorge
- Upgrading the primary track network.
- Rationalise secondary links and local networks.

### **1.7.3 Playground Policy 2002**

This policy defines how the Council will provide playgrounds to the community in an equitable manner recognising the needs of communities and suburbs and taking into account constraints of topography and funding. The objective of the Playgrounds Policy is therefore:

*The provision of a range of safe, enjoyable and stimulating playgrounds across the City in a way that best meets the needs of children, care-givers, communities and the City for access, safety, amenity and maintenance.*

Working towards this objective will establish an adequate provision of playgrounds in Wellington, as well as ensuring that excessive provision does not occur.

### **1.7.4 Biodiversity Action Plan 2007**

The Biodiversity Action Plan coordinates the Council's biodiversity activities and identifies local priorities and actions for biodiversity. Biodiversity activities include pest control, revegetation planting, and partnerships with other organisations and groups.

The outcomes of the plan include:

- identifying the current state of Wellington's biodiversity and the areas/species which require the most protection.
- protecting Wellington's indigenous biodiversity on both public and private land.
- motivating the community to become more involved in biodiversity conservation.
- working closely with other organisations to ensure the conservation of Wellington's biodiversity.
- restoring our indigenous biodiversity where possible and ensuring that it's easily accessible for all Wellingtonians.
- generating quality information through monitoring and research to enable us to conserve and manage our biodiversity into the future.

### **1.7.5 Recreation Strategy 2003**

The Recreation Strategy sets out a range of desired outcomes and aims in order to deliver quality recreation and leisure opportunities. Recreation and leisure activities contribute to the wellness and vitality of the city; they are provided for across a wide variety of organisations and communities. The Council plays a central role in this provision and will continue to develop

formal and informal partnerships with organisations and communities that add to the recreation and leisure opportunities.

The plan is of particular relevance in relation to Council's provision of sportsfields and in this respect it aims to ensure there is easy and affordable access available all year round.

### **1.7.6 At the Heart – Wellington Regional Recreation Strategy**

Over the past twelve months Council has been working with other agencies to develop a regional recreation strategy: *At the Heart*. This has been lead by the Wellington Regional Recreation Initiatives Group (WRRIG). This group is made up of the Wellington Urban Councils (Upper Hutt, Hutt City, Porirua, Wellington, Greater Wellington), Capital and Coast District Health Board and Regional Public Health and Sport Wellington.

The scope of the Regional Recreation Strategy encompasses discretionary physical activity (what you choose to do in your spare time, including sports and active recreation), active transport (walking to work, school or local shops) and daily life physical activity (what you do as you go about your day, for example, housework). The broad scope allows for greater collaboration with a wide range of agencies in the facilitation of physical activity.

#### *At the Heart:*

- Aims for the most effective and efficient delivery of physical activity, maximising uptake by the Wellington urban communities over the next three to five years
- Considers regional provision issues such as facilities and services and individual district issues where appropriate
- Links with the LTCCPs, Wellington Regional Strategy, and Council recreation strategies.

The key objectives considered as part of *At the Heart* are:

- Integrated future development of sport and physical recreation community plans through the development of community partnerships of stakeholders and users
- Cohesive and collaborative planning that considers issues related to society, the environment, transport and economy
- Comprehensive funding strategy that enables implementation of initiatives across the region.

### **1.7.7 Draft Climate Change Action Plan (2007)**

This plan identifies cost-effective initiatives for Council operations and the community that will help the Council achieve its carbon neutral vision, and promote sustainable behaviour. The following actions are of particular relevance to the northern reserve management area:

- Development of mandatory sustainable building design guidelines for officers to use during the planning process for new buildings and facilities, upgrades, retrofits and renewals

- Apply for carbon credits under the Government's Permanent Forest Sink Initiative.

## **1.8 Status of this Plan**

### **1.8.1 Reserve and open space planning in Wellington**

The Council is responsible for over 250 individual reserves and open space properties covering a total area of 3,376 hectares. Of those that are protected under the Reserves Act 1977, the majority are classified as recreation reserves. A smaller number are scenic, historic or local purpose reserves.

With so many individual reserves and open space properties, the Council has rationalised its approach to reserve management planning by identifying nine major clusters. For each of these clusters, the Council will prepare a Management Plan that seeks among other things, to set management objectives and policies that reflect the particular values of each area consistent with the Council's *Capital Spaces* plan.

*Figure 3 Reserve Cluster Plans*

### **1.8.2 The Reserves Act 1977**

This cluster plan approach is broadly consistent with the Reserves Act 1977 and its interpretation in the Reserves Act Guide 1999 which makes a number of points about omnibus plans and what they can and cannot do. In particular:

*“Provided the requirements of s.41 of the Act are otherwise met, a management plan may cover more than one reserve.*

*Such a multiple-reserve management plan may cover all reserves of a single class (for example: all recreation reserves) or cover reserves of different classes for which the Council is the administering body.*

*In the latter instance, the provisions in the plan relating to reserves of any particular class must be consistent with the statutory requirements related to that class of reserve (s.41(3)). For example, any goals or objectives in the plan which relate to recreation reserves must be consistent with the purposes defined in s.17. Those for scenic reserves must be consistent with s.19.*

*The reserves covered by the plan (and their boundaries) must be sufficiently described for a member of the public to recognise them individually. This can be done, for example, by mapping them in adequate detail in the plan. Legal descriptions and references to land status documentation (ie: how the land became a reserve) should be included.*

*The plan must provide details of the classification of each reserve, and a reference to the authority for the classification (source document) is essential. The purposes for which a reserve must be managed derive from its classification.*

The guide further states:

*The Council can prepare an advance draft of a plan covering an unclassified reserve(s) for which it is the administering body, provided this does not pre-empt the classification process.*

*The Council cannot, however, invite public submissions on the draft plan until all the reserves which it covers are classified and the draft plan is consistent with those classifications.*

And:

*Any land of the Council which is not subject to the Reserves Act 1977 can be included in a multi-reserve plan if the Council wishes. It will need to be distinguished from the reserves and appropriately provided for (Council cannot be bound by the terms of the Act for those areas.).*

### **1.8.3 Relationship with Tangata Whenua**

Wellington City Council recognises the importance of the mana whenua relationship and has a formal memoranda of understanding with Wellington Tenth Trust and Ngati Toa Rangatira.

Under the memoranda of understanding, each party recognises the authority of the other to exercise their responsibilities – kawanatanga (governance) by the Wellington City Council and rangatiratanga (customary authority) and kaitiakitanga (guardianship) by tangata whenua.

Actions taken under this Plan will reflect these principles and are intended to provide opportunities for discussion and to develop partnerships.

## **2 Landscape**

### **2.1 Existing Conditions**

Our managed landscapes are an expression of our relationship with the land, of our identity. The extent to which our development is woven into the natural patterns of the land is an expression of what we value. The way we see and experience our landscapes is a reflection of the choices we make. An awareness of what makes our landscapes and the places where we live attractive, helps us to ensure that ongoing development and change better reflect our needs.

The landscape evolves and changes with our values and aspirations. The landscapes of Wellington City are special and unique, in part because the difficult topography placed limits on what was able to be developed in the past, but also because far sighted people recognised the value of public open space. The Town Belt and the Outer Green Belt are defining features in the lives of people in the central city. Both provide coherent threads of connected open space through the city centre and along the western ridgeline. With peoples ever increasing demands for outdoor recreation opportunities, and a desire to enhance the city's indigenous flora and fauna, has come initiatives to extend and to enhance the threads of public open space across the city. The emphasis on ecological as well as recreational linkages has seen a strengthening of the natural patterns in the city's landscapes.

In the area covered by the NRMP, development has been less constrained by topography than in the older, southern, parts of the city. Apart from the steep faces along the western side below the Outer Green Belt and the harbour escarpment, most of the area is relatively gentle and has until recently been farmed. Although the landforms are a dominant feature of the landscape the natural patterns of gullies and streams have been largely lost to development.

Burning and subsequent grazing has removed most of the woody vegetation and roads have cut across water ways which have vanished into pipes. Almost all of the indigenous vegetation is recent and naturally regenerated. Indigenous vegetation provides a continuous cover along the harbour escarpment and the western faces above Tawa but for the remainder of the northern area it is fragmented and restricted to reserves and steeper areas on private land. Pine plantations, a significant feature in the landscape, tend to give emphasis to culturally imposed patterns. On the western side of State Highway 1 housing development has been softened with planting while on the eastern side where development is more recent (and ongoing) structures and roads dominate.

*Insert Map 2 North Wellington Landscape*

*Insert Map 3 Reserves within the Landscape*

## 2.2 Issues and Opportunities

The connectedness of the public open space frame work is important in providing a sense of continuity across the landscape and in contributing significantly to natural character and amenity. Patterns of open space that reflect the flow of the land and its contour give emphasis to landform. Well integrated patterns of open space tend to include the areas of ecological significance and simultaneously provide tracks for walkers and cyclists.

An ideal open space framework incorporates the key landscape attributes of the city; the areas of ecological significance, areas and features of heritage value, and public access ways. The open space framework may include private land (with covenants and easements) as well as public land. The planting undertaken by property owners and their willingness to allow natural regeneration on their properties makes a major contribution to the quality of the environment generally and the visual amenity of their communities in particular. Community members make an increasing contribution to the planting and management of public open space.

The landscape of the northern reserves area can be considered to exist at a series of scales:

**At a broad city scale** the bold patterns contribute to the essential character and coherence of the wider city and surrounding environment.

**At the community scale** the landscape confers identity and provides coherence, contributing to the amenities of the community and providing the setting for day to day experiences, functional as well as recreational.

**At a reserve scale** there is a contribution to the open space and amenity values of the local neighbourhood. Most reserves are 'local' and discrete. Larger reserves can be 'local' as well as part of a wider pattern of landscape coherence and connectedness.

### 2.2.1 City Scale- Landscape character and coherence.

The city has a distinctive character, defined by the topography and the vegetation cover. The patterns of naturally regenerated native vegetation largely reflect the topographical patterns. Steep slopes and many of the more deeply incised water ways are reverting to their native cover where grazing stock have been removed, pests controlled, and development constrained.

The most significant planning initiatives to capture the attributes of the wider patterns of character and coherence include the Ridges and Hilltops Assessment and the OGBMP. Both recognise the importance of Wellington's skyline in its essential contribution to the distinctive character of the city.

The essential attributes of the distinctive wider landscape framework include:

### **2.2.2 The ridges and hilltops**

The most significant ridges and hilltops were identified on the basis of their high visibility from many places within the city as whole. All ridges, hilltops, and spurs can be visually dominant and significant however, even if only at a very local scale.

The ridges and hilltops along the western side of the NRMP area are for the most part in grazed open pasture but there are pine plantations, Spicer Forest, at the northern end above Tawa.

On the eastern side of the NRMP area ridges are less clearly defined. Newlands, upper Horokiwi and Belmont Regional Park occupy broad open tops and housing development is encroaching onto the skyline. Steep spurs and gullies drop down to the harbours edge to the east, and on the western side long spurs and easier slopes run down to Tawa and the Porirua Basin.

### **2.2.3 Coastal edges and escarpments**

The harbours edge follows Wellington's main fault, a very distinctive geological feature given emphasis by the steep escarpment rising up to the skyline. This 'hard edge' is a defining feature of the harbour and city. There are remnants of Wellington's original vegetation in the damper, sheltered, gorges and gullies. Naturally regenerated indigenous plants have colonised burnt faces to soften the escarpment and stabilise steep, and shaky, ground.

### **2.2.4 Steep slopes and water ways**

The development of Wellington has always been constrained by steep topography and deeply incised streams. Threads of vegetation weave their way across the city defining an ecological and cultural connectedness. Housing enclaves are sheltered and contained by this vegetation which defines their character and identity. In the NRMP area the Porirua Stream is a defining feature.

### **2.2.5 Main Roads, the State Highway, and railways**

In the NRMP area road and rail reserves cut broad swathes across the landscape, not always in sympathetic ways. State Highway 1 is a central feature in the landscape, dividing the eastern from the western side, and cutting across the streams draining down from the eastern slopes into the basin below. Vegetation associated with the road reserve has a very significant influence on the experience for users of the motorway. Similarly, for those with views of the motorway corridor from their houses the vegetation is critical in softening the visual impacts of the motorway and the constant movement of vehicles. The motorway corridor can be seen as a valuable swathe of vegetation that breaks up an otherwise monotonous continuum of houses.

The railway corridor provides an open space corridor similar to roads. The railway corridor can make a significant contribution to the character of the landscape and the amenity values of more immediate neighbourhoods. Porirua Stream moves down through Glenside in a deep gully, the railway line on its eastern side and Middleton Road to the west. Steeper slopes above the road to the west and above the railway line to the east are clothed in woody vegetation, native and exotic. Taken together these elements combine to provide a very substantial area of open space, adding diversity and interest for the passer-by in a car or on the train. The corridor contributes significantly to the character and visual amenity of Glenside.

### **2.2.6 The pattern and scale of housing development**

The patterns of development and its density are defined by, and therefore reflect, the land form. In older suburbs, developed when engineering was more constrained and perhaps a greater modesty prevailed, houses are less dominating and the 'space left over' has been colonised by native vegetation. There is a sense of integration; development that accommodates rather than dominates nature. More recent development has been less generous and accommodating in this regard. Road development cuts deep scars across the faces of steeper hills, and structures dominate. Expansive areas of hard surfacing often leave little space for people to plant trees and shrubs or for nature to simply re-invade.

### **2.2.7 Community Scale**

Wellington's older suburbs are well integrated into woody vegetation (indigenous and exotic), have views onto bush covered hills, often have views out onto the harbour, and have reasonable walking or cycling access to larger areas of public open space, either the Town Belt or the Outer Green Belt. In the newer suburbs of the NRMP area this is not generally the case at present.

On the western edge of Tawa, the Outer Green Belt comprises the pine plantation of Spicer Forest and 944 Ohariu Valley Road. The steep faces below are clothed with a substantial cover of native forest. Extensive fingers of mixed vegetation weave their way into the suburbs along road reserves and across steeper south facing slopes. The vegetation through built areas is however fragmented and public access is limited. Access to the Outer Green Belt from the developed areas of Johnsonville, Churton Park and Tawa is often ill defined, or non-existent. Reserves along the lower western slopes serve a valuable scenic and amenity function but exist as separate entities with little connection to the wider open space network, providing little in the way of recreation. Although a relatively recent suburb of Wellington, Tawa has evolved a distinctive landscape character with high amenity values.

On the eastern side of the area new housing development has moved onto formerly grazed land where woody vegetation is restricted to scattered gully remnants. The more open and easier topography means that development tends to be sprawling and dispersed rather than contained. Although there are significant areas where the difficult topography and aspect preclude development for houses these areas are not always coherent and connected.

Vegetation cover can be in the early stages of succession with a preponderance of gorse, broom, and other scrub weeds. The longer term value of such areas is not always recognised by developers, or by the pioneering pursuits of new residents.

The challenge at the community scale is to recognise the future value of containing and connecting open space. Ideally, open space should shape and define community identity and be accessible. Local open space should be linked into the wider networks so that access to wider recreational opportunities on foot or on bikes is possible. Containment can be provided by planting and by encouraging natural regeneration on public as well as private land, and generous road corridors can accommodate substantial ribbons of woody vegetation and attractive cycling and walking tracks.

### **2.2.8 Reserves Scale**

Reserves vary in size as well as in their purpose. Some are an integral part of a wider network and have ecological values that contribute to the resilience and quality of this. Others are local purpose and stand alone. Local purpose reserves may contribute to the wider amenity values of the area or they may simply be playgrounds where safety and visibility requirements mean that vegetation is minimal (or at least low in stature). Reserves can be classified into the following:

#### **2.2.8.1 Large scale reserves**

Large scale reserves affording ecological and recreational connections. Examples include Carribbean Drive and Seton Nossiter Park.

#### **2.2.8.2 Medium scale reserves**

These are not part of a wider connectedness but are never the less attached to waterways and areas of ecological significance. Examples include Wilowbank Park, and Wilf Mexted Scenic Reserve.

#### **2.2.8.3 Small scale local purpose reserves**

These have ecological and amenity values but are isolated from wider networks and accessible only from the road. Examples include Larsen Crescent Reserve in Tawa and Amesbury Drive Reserve in Churton Park.

#### **2.2.8.4 Local playgrounds**

These have no ecological values and low amenity values that are essentially functional in character.

Table 1- Critical Reserves Contributing to Landscape Coherence and Amenity.

	<b>Large</b>	<b>Medium</b>	<b>Small</b>
<b>Tawa</b>	Spicer Forest	Wilf Mexted	Main Road West
	Marshalls ridge (A)	Woodman Drive	Victory Crescent
		Lyndhurst	Main Rd Porirua Esplanade
		Larsen Crescent	
		Grasslees	
		Willowbank	Duncan Street Railway
<b>Takapu, Tawa east</b>	Takapu Ridge (A)		Raroa Park
			Woodman Drive Lookout
			Pikitanga Recreation Reserve
<b>Churton Park/ Stebbings Valley/ Glenside</b>		Lakewood Reserve	Wingfield Place
	Glenside Reserve	Edward Wilson Reserve	Amesbury Drive
	Railway Line- Duncan Street / Powells Road	Churton Park	
	Marshalls Ridge (A)		
	Stebbing's Valley(A)		
<b>Grenada/ Newlands</b>	Grenada North	Woodridge	Pinkerton Park
	Hillcroft Road	Henly Estate	
	Seton Nossiter	Kentwood Drive	
	Carribbean Drive		
	Lincolnshire Farm (A)		
	Belmont Reserve		
<b>Harbour Escarpment</b>	Waihinahina Park - in memory of Dennis Duggan/	Gilberds Bush	Brandon's Rock (Landscape Feature)

(A) Areas of change and development where advocacy will be important to ensure that critical ridges and spurs are protected from excessive structural dominance and where waterways and steeper slopes provide vital linkages and coherence across the landscape.

## **2.3 Objectives**

- Protect the natural character of reserve areas to maintain the unique landscape of the northern areas.
- Protect and enhance corridors of revegetation to provide coherence and unifying themes across the landscape.

## **2.4 Policies**

- Council will seek to protect outstanding landscapes and features.
- Council will (so far as possible) protect the existing character of the ridges and hilltops using all appropriate means, including Reserves Act classification.
- Retain ridgetop and hilltop landscapes on the eastern side as a blend of open and forested areas.
- Council will seek to protect visually significant vegetation on steep slopes on Council reserves and through advocacy and other mechanisms such as covenants.
- Council will work with developers to establish reserves that recognise significant landscape and amenity values and contribute to a wider landscape connectedness and coherence.
- Council will engage with landowners and communities in the protection and enhancement of landscape and amenity values of reserve areas and private land to encourage appropriate land management and community action.

## 3 Ecology

### 3.1 Existing conditions

#### 3.1.1 Historic Ecosystems

Prior to human settlement, the northern area would have been covered in luxuriant forest with gigantic rata, rimu, totara and kahikatea. Tree ferns and nikau would have been common in the dense undergrowth. This undergrowth would have been interrupted only by the meandering Porirua Stream and its tributaries. Towards the coast the steep hills would have been covered in dense forest, thick with supplejack, and the whole area would have been ringing with bird song.

Records from early European settlers show that, less than 170 years ago, huge trees were still the norm and the forest was still teeming with bird life (including the now extinct huia). An early track was being cut through the thick forest of Porirua Valley, and the Ngauranga stream mouth was still an area rich with food for the local pa<sup>3</sup>.

The present day ecology of the northern area echoes the human history of the last 200 years of farming and development. It is characterised by remnant pockets of the original podocarp-broadleaved forest, with occasional fingers of regenerating forest reaching along scarps and down gullies. Most of the northern management area nestles in the basin of the Porirua catchment. The catchment runs north-south and extends from the Belmont ridge in the east to the Outer Green Belt (Ohariu Ridge) in the west. East of the Belmont ridge is heavily influenced by coastal conditions and its ecology is defined by the coastal forest of the Harbour Escarpment and the heavily fragmented streams and bush of the Ngauranga Catchment.

#### Physical Parameters

Altitude: Sea level (on eastern side) to 40 m above sea level (Tawa) to 373 m above sea level (Magee Peak, Horokiwi)

Topography: Steep to undulating

Soil Parent Material: Mostly weathered to moderately weathered greywacke

Soil: All well drained to moderately well drained. Mostly Korokoro hill soils (shallow, less than 1 m deep) supporting pre-European vegetation of rimu-rata/hinau/tawa or rimu-rata/tawa/kohekohe forest. Also some Makara Steepland soils (supporting same pre-European vegetation), Belmont hill soils (pre-European vegetation of rimu-rata/hinau/kamaha forest), Judgeford hill soils and Korokoro loam.

#### 3.1.2 Present day indigenous forest

---

<sup>3</sup> Boffa Miskell 1998. *Wellington's Native Vegetation. A Brief Survey of Early Historical Records*. Report prepared for Wellington City Council.

Most forest remnants are small (less than two hectares), with the exception of patches of forest in Belmont Regional Park (approximately 15 Ha), Redwood Bush (nearly 10 Ha and sited within the Outer Green Belt), and remnants within Woodburn Drive reserve (approximately 5 Ha). The inland remnants tend to be dominated by tawa with emergent rewarewa, occasional matai and totara, with canopy species such as kohekohe, hinau and mapou. Most remnants are buffered by mahoe dominated regenerating forest.

To the east of the management area, particularly along the Harbour Escarpment, the forest is strongly influenced by the exposed coastal environment. The forest tends to be lower than inland remnants, and is characterised by a very compact and often wind sculpted canopy. Species such as nikau, putaputaweta and porokaiwhiri (pigeonwood) are more common. Karaka, a tree introduced from northern New Zealand, is also common in these areas.

Regenerating forest areas are generally in transition from gorse to mahoe dominated forest, and typically occur in steep gullies or scarps of retired farmland and non-developable areas. There are also remnants of manuka/kanuka shrubland. Areas of regenerating forest are well represented in the northern reserves network (for example, Miles Crescent Reserve, Caribbean Ave Reserve, Dungarven Road Reserves, Seton Nossiter Park). It is expected that, with ongoing pest control, regeneration of native species will continue in these areas, resulting in forest with elements of the original forest cover.

Little information exists on the fauna of the northern forest remnants. Council has been carrying out bird monitoring in Redwood Bush in Tawa. Although this reserve actually sits within the Outer Green Belt management area, its close association to other Tawa forest remnants make it likely that they experience similar relative abundances of species. Grey warbler, kereru, bellbird, kingfisher, tui, silvereve, fantail and tomtit have all been observed in this area within the last seven years<sup>4</sup>.

### **3.1.3 Streams**

The Porirua catchment is an urban catchment, beginning in northern Johnsonville and draining to Porirua Harbour in the Porirua District. The main stream is Porirua Stream and major tributaries within Wellington District are Belmont Stream, Stebbings Stream and Takapu Stream.

Porirua Stream substrate is mostly gravels and cobbles. Riparian cover is sparse or non-existent throughout much of Porirua Stream, although some reserve areas do include a mix of exotic and indigenous trees that provide some shading for the stream as well as some (mostly exotic) herbaceous ground cover. Macroinvertebrate fauna is low in taxa richness, and taxa with low tolerances of pollution are rare or absent (eg mayflies, stoneflies, caddisflies). The aquatic fishery values are not regarded as high value, although two species of threatened fish giant kokopu and longfin eel have

---

<sup>4</sup> Pacific Eco-Logic Ltd (2007). Changes in native forest bird distribution and abundance in Wellington City Council reserves 2001-2007. Report prepared for Wellington City Council.

been recorded. Other fish species recorded from Porirua Stream are: shortfin eels, giant kokopu, inanga, redfin and common bullies<sup>5</sup>.

Ngauranga Catchment is similarly urban. The Ngauranga Stream is heavily modified and extensively piped with the presence of a quarry, freezing works, light industrial and commercial activity, and runoff from the adjacent motorway. Nevertheless, the stream has some areas of natural flow and bush regeneration<sup>6</sup>.

The Horokiwi Catchment also occurs in the northern management area. This is a small catchment within the Harbour Escarpment. It is defined by the Horokiwi stream and is heavily modified by the Horokiwi Quarry.

## 3.2 Issues and Opportunities

### 3.2.1 Biodiversity protection

Biological diversity (biodiversity) includes all biological life, the genes they contain, the ecosystems in which they exist, and the systems and processes that connect them. Protecting biodiversity is important for the environment and economy as it supports ecological functions to ensure basic needs such as clean water and air. Biodiversity also forms part of the distinctive identity of an area and there are often associated cultural values.

Ensuring that a representative range of Wellington's biodiversity is protected is critical in the effective management of the city's biodiversity (see Wellington City Council Biodiversity Action Plan 2007). The widespread nature of the reserves of the northern management area means that there is an opportunity for representing the full range of the northern area's existing indigenous biodiversity through the reserves network.

Ecological domains are useful planning units for considering the range of indigenous biodiversity at the scale of this management plan. Ecological domains (ecodomains) represent a cluster of repeating biogeoclimatic patterns which are manifest in its biological communities and patterns. Factors taken into account include fundamental ecological parameters of energy, nutrient, water, temperature extremes and physical substrate.

The following ecodevains occur in the northern management area:

**Ecodomain 9a Inland hill country and basins:** This is a large ecodevain of complex terrain, typically comprising broad, damp basins, moderate to steep hill country, and contorted gullies. This ecodevain has three key components; north/south aspect slopes, convoluted gullies and valleys with fast flowing streams, and frost-prone basins.

---

<sup>5</sup> Kingett Mitchell Ltd (2005) Aquatic ecology and stream management groups for urban streams in the Wellington region. Report prepared for Wellington Regional Council.

<sup>6</sup> Ibid.

**Ecodomain 8 Low hill country:** This ecodomain represents a band of land experiencing year-round humidity and mild temperatures that lies between the extremes of a maritime influence (salty but frost-free) and the inland hill country (high rain, cloud cover and cool temperatures). Components include relatively straight flowing gullies, and slopes and ridges with mantled or deeply weathered surfaces.

**Ecodomain 4 Kaiwharawhara – Petone Escarpment:** This steep escarpment and narrow rock platform is defined by the fault line. Components include a salt zone with steep stable hillslopes and shallow gullies, and an upper slope zone, with steep, stable hillslopes and deeper gullies.

Based on the ecodomain analysis we expect differences in the forests of the northern area. Originally, inland hill country forests would all have had emergent rimu and rata with a canopy dominated by tawa, but there would have been subtle differences between forests occurring on the relatively sunny northern aspects, shadier southern aspects, frost-prone basins and gullies. Remnants of these differences remain today.

While no forest remains exactly as it was originally, a survey of the current reserves network shows current representation of the biodiversity of the northern ecodomains. Detailed results of this analysis are given in *Table 2*.

There is a relatively good representation of forests of north facing inland hill country (eg Redwood Bush), and gullies and associated streams (eg Seton Nossitor Park). However, forests and streams of the frost-prone basins and southern facing slopes are not well represented, although a number of reserves have the potential to be restored to a healthier state.

The vegetation of the low hill country, occurring between the extremes of the salty winds and the inland hill country is characterised by gullies, slopes and ridges. Gilberts Bush, Henly Estate Reserve, and Woodburn Drive Reserve are important examples of these ecosystem types. A significant gap in the current reserve network is the coastal forest and gullies of the Harbour Escarpment.

*Insert Map 4 Wellington Ecological Domains*

Table 2\_ Reserves that contain representative examples of the natural ecosystems of the northern ecological domains, and reserves with the potential to be representative examples.

Ecodomain	Original ecosystems	Reserves representative of original ecosystem	Reserves potentially representative of original ecosystem <sup>7</sup>
9a – north aspect slopes	Rimu-rata/tawa-hinau-kohekohe/mapou-kohuhu	Redwood Bush (note this is covered by the Outer Green Belt Management Plan); Larsen Crescent Reserve; St Annes Reserve; Wilf Mexted Scenic Reserve; Caribbean Ave; Belmont Reserve	Woodman Drive Extension, Oriel Ave Reserve; Handley Grove Reserve
9a – south aspect slopes	Rimu-rata/tawa/rangiora, five finger-lemonwood-mahoe	-	Woodburn Drive Reserve; Totara Park
9a – convoluted gullies/valleys	Fast flowing streams; forest dominated by moisture-demanding species (eg kahikatea, tree ferns)	Seton Nossitor Park and Belmont Gully; Woodridge Reserve	Pikitanga Close; Kentwood Drive Reserve; Ohariu Rd Reserve
9a – frost prone basins	Kahikatea-rata/hinau-pukatea-pigeonwood; stream/riparian	-	Forest: Charles Duncan Reserve, Victory Crescent, Willowbank Reserve
8 – gullies	Straight flowing streams with eroded sediment; forest dominated by moisture-demanding species and nikau	Waihinahina Park, Gilberds Bush	-
8 – slopes and ridges	Rimu-rata/tawa-hinau-kohekohe with nikau	Gilberds Bush, Henly Estate Reserve,	Miles Crescent Reserve; Dungarven Road Reserves
4 – upper slopes	Wind-shorn coastal forest (eg ngaio-taupata-akiraho-tree hebe-broadleaf-mahoe-karamu-fivefinger)	-	Dungarven Rd Reserves; Tamworth Crescent Reserve
4 – salt zone	Coastal forest (as above), shrubland-flaxland	-	-

<sup>7</sup> These reserves have been rated as having low to moderate ecological health. It is expected that over time these reserves have the potential to become representative example of the biodiversity of the northern area. In most cases intervention may be required eg pest control, restoration planting. In other cases the area is likely to revert naturally over time.

### 3.2.2 Ecological connectivity

Due to the relative isolation of the forest reserves in the northern area, ensuring the long term health and resilience (or ecological integrity) of these reserves is a key challenge.

For forest areas size, shape and connectivity are important for health and resilience. In general, an optimal forest patch will have a low edge to area ratio (eg circular or square, rather than linear or convoluted) and will be large enough to ensure an intact 'core' (where the core is an inner area not influenced by edge effects such as increased light, wind and weeds). These elements can be addressed through restoration and revegetation priorities.

An optimal forest patch will also be close enough to other forests to sustain seed dispersal and seedling recruitment. Research and modelling in New Zealand indicates that if optimal forest patches ('sources') are interspersed by habitats receptive to seed germination ('sinks') then ecological functions such as podocarp recruitment can be sustained<sup>8</sup>. The northern management area is an opportunity to incorporate these principals of ecological connectivity into reserve design, management and acquisition.

Map 5 shows the current pattern of connectivity of indigenous forest reserves in the northern area. Buffers of 1 kilometre occur around forest remnants greater than one hectare that are protected within a reserve (shown by a yellow dot). These buffers are based on research integrating ecological and social needs<sup>9</sup>, where a 4-10 ha reserve every 5 km, and a 1 ha reserve every 1 km ensures seed dispersal as well as providing forested reserves within walking and cycling distance of the community. Ideally, clusters of big trees will also occur every 200m.

There are five reserves with forest of five hectares or larger which are important influences in the northern area: Woodburn Reserve, Belmont Reserve, Redwood Bush/Brasenose Place, Khandallah and Johnsonville Reserve. The reserves with forest of one hectare or more are: Wilf Mexted Scenic Reserve, Belmont Reserve, Hillcroft Road Reserve, Seton Nossiter Park, Waihinahina Reserve, Gilbert Bush Reserve, Henly Estate Reserve, Johnsonville/Khandallah Reserve.

---

<sup>8</sup> Meurk, C. & Hall, G. 2000. *Biogeography and ecology of urban landscapes*. In: Urban biodiversity and ecology as a basis for holistic planning and design: proceedings of a workshop held at Lincoln University 28-29 October 2000. eds G.H.Steward & M.E. Ignatieva. Christchurch: Wickliffe Press.

<sup>9</sup> Ibid.

*Insert Map 5 Connectivity of Indigenous Forest Reserves*

Several gaps in ecological connectivity of the forest reserve network can be seen, namely: the Tawa basin, Grenada North, Churton Park, Glenside and the Harbour Escarpment. Filling these gaps through restoration planting, pest control and reserve acquisition is an opportunity. There is further opportunity for ecological connectivity when considering forests on private land and for Wellington City Council to take an advocacy role in encouraging landowners to protect these.

The above principles do not include consideration of specific needs to maintain populations of species, and so the precautionary principle should be applied of preserving as much habitat as possible<sup>10</sup>. Map 5 should be considered as a minimum requirement for 'green' connectivity.

For streams, riparian habitat is as important as the in-stream habitat for ensuring ecological health. Native riparian cover is important for providing shade and food for aquatic life, which in turn, helps maintain water quality. Riparian cover can also help filter pollutants washed into streams by stormwater. The Porirua Stream is managed by Greater Wellington Regional Council, however there are a number of City Council Reserves sitting alongside the stream that are within the scope of the current management plan. In addition, what happens on land affects stream health, and this plan is an opportunity to advocate for land use practices that protect streams, for example Low Impact Urban Design and Development, and policies are designed to encourage this. Finally, protecting stream health is a key open space consideration in reserve acquisition.

### **3.2.3 Restoration**

Restoration is an important tool in ensuring ecological health and resilience. Restoration may be to enhance an area (e.g. restoring podocarp species to a forest remnant), it may be to buffer an area (e.g. improving the shape or size of a forest remnant), or to create ecological connectivity (e.g. revegetation of a riparian area).

Priority setting for restoration should be in a city-wide context in accordance with the Biodiversity Action Plan (2007), but should also recognise specific opportunities for the northern reserves network. Opportunities for ecological enhancement planting will need to be assessed on a case-by-case basis and should be informed by ecological research. Buffer planting is a priority for reserves with primary forest remnants that are not already buffered by regenerating forest.

Ecological connectivity is an important issue for the northern area. Restoration work to fill gaps in the connectivity of forest reserves is important (as described in above section) and restoration of the riparian vegetation is an excellent opportunity to enhance the 'blue corridors' of the northern area.

---

<sup>10</sup> Hanski, Ilkka. (1998). *Metapopulation dynamics*. Nature 396:41-49.

### 3.2.4 Pest control

Effectively managing pest plants and animals is also fundamental to the ecological health of the northern area. Pest plants, or weeds, are an issue throughout the northern management area and are a particular concern for small, isolated reserves. Common weeds in the northern area are tradescantia, blackberry, hawthorn, Japanese honeysuckle, sycamore, and karo. Gorse and broom are also common, but these species can act as a nursery for the regeneration of native plants. Some weeds are not yet widespread in the northern area and there is the opportunity to keep them out of key reserves. One example is climbing asparagus which is already widespread within central Wellington but to date is unknown in the northern area. Darwin's barberry is another example; while this is scattered throughout the northern area, there is still the potential to keep vulnerable areas free from it. Surveillance and early intervention are critical for nipping these weeds in the bud.

Pest animals are also a problem, particularly possums, goats and mustelids. Possums are controlled in many parts of the northern area as part of the Wellington City Council and Greater Wellington Regional Council shared possum control programme. Volunteers play a major role in this work with the Friends of Tawa Bush maintaining bait stations for Greater Wellington. This programme is thought to be contributing to increased numbers of native birds and improved forest regeneration and health. Goats have been an ongoing problem in many reserves, eating palatable plants (native and exotic) particularly around the Ngauranga Gorge and Horokiwi Reserves. They are thought to have been eradicated from the Ngauranga area, and numbers are decreasing around Horokiwi. However, re-invasion is an ongoing issue. Mustelids (stoats, ferrets and weasels) are a particular threat to native birds (including eating eggs), lizards and insects (eg weta). Mustelid control requires intensive trap checking and is most successful where community groups are able to help.

The Wellington City Council Pest Management Plan (2005) identifies two kinds of pest control: species-led and site-led. Species-led programmes are particularly relevant in managing weeds and pest animals in the early stages of establishment when numbers are low and distribution is limited. Site-led programmes focus on areas of high biodiversity value and prioritise the control and management of pests that pose the greatest threats to these values. The Pest Management Implementation Plan prioritises sites for weed control and pest animal control on a city-wide basis. Priorities for pest control should also recognise specific opportunities for the northern reserves network as resources allow. Key opportunities are to manage pests in reserves that are representative examples of the biodiversity of the northern area, and to prioritise areas important for ecological connectivity.

Due to the huge number of pests, the greatest challenge both for the northern area and city-wide is to correctly prioritise control and use resources effectively.

### **3.2.5 Urban development**

Urban development has a strong influence on the ecology of the northern management area. Urban development can have a detrimental impact on biodiversity values, for example filling-in streams and clearing vegetation. Development can also impact the ecological health of existing reserves, for example stormwater run-off from development can increase sediment and pollutants in streams, and vegetation clearance reduces seed sources for forest recruitment and increases fragmentation. These issues are managed through the District Plan objectives and policies and resource consent process. However there is an opportunity to advocate for development styles which minimise ecological impacts through this plan and policies are provided to encourage this.

Looking after the biodiversity values of the northern area and providing links between these areas can also shape the extent and type of residential development and this is part of the vision described for the Northern Growth Management Framework (2003). Reserves contributions acquired through greenfields developments provide opportunities for the acquisition and management of many important ecological sites.

### **3.2.6 Biodiversity on private land**

A principle of ecology is that everything is interrelated. The ecology of the northern reserves is heavily influenced by how indigenous biodiversity is managed on private land. For example, important food sources for birds may be specimen trees on private land, or a source of weeds could be from gardens. Advocating for the management and restoration of biodiversity on private land is an important opportunity for the ecological health of the whole area.

### **3.2.7 Community Initiatives**

Many of the current projects to restore and manage the biodiversity of the northern area are initiated and carried out by the community. This Plan will help the Council and community work together by providing a common vision to which the individual projects contribute. The importance of community work is recognised in the Wellington City Council Biodiversity Action Plan, and projects are being implemented to increase the overall level of community participation.

### **3.2.8 Managing change**

The ecology of an area is a living process. As with all living things, it changes over time. This may be triggered by external events like fire, or it may be a natural successional change from scrub to forest. Land that is reverting from farmland or scrub to indigenous forest is a carbon sink and may meet criteria for receiving forest sink credits under the Government's Permanent Forest Sink Initiative (PFSI) scheme.

Gradual changes to biodiversity are difficult to plan for. In some instances, restoration may be needed, in other instances for example climate change, careful monitoring will be required to adapt management practices to ensure change is not threatening the ecological health and resilience of the northern area.

### **3.3 Objectives**

- Ensure the protection of streams, forest remnants and other important ecosystems
  - The reserve network comprises representative examples of the existing indigenous biodiversity of the northern area.
  - The biodiversity of the northern area is protected, enhanced and functions as a well connected system.
  - Pest plants and animals are controlled efficiently and effectively.
  - Changes and influences to the health of streams, forest remnants and other important ecosystems are monitored and acted upon appropriately.
  - Landowners are motivated, inspired and educated to protect biodiversity on their own land.
  
- Restore and enhance streams, forest remnants and other important ecosystems
  - Continuous riparian cover alongside all streams that run through reserves.
  - Restoration is carried out to improve ecological connectivity and to enhance existing ecosystems.
  - Communities are motivated, inspired and educated to get involved in conserving biodiversity.

### **3.4 Policies**

#### **3.4.1 Protecting the biodiversity of the northern area**

- The Council will protect all forest remnants and ecologically important areas on Council land in the northern area.
  
- The Council will protect all streams and natural water courses on Wellington City Council land in the northern area and work with adjacent local authorities to ensure a coordinated approach to stream management.
  
- Council will protect the natural structure and flow of streams in reserve areas from modification.
  
- Where there is existing infrastructure, including stormwater management devices, within a Council reserve these will be managed

and if necessary re-designed to minimise impacts on the natural environment.

- Any new infrastructure affecting a stream must firstly be assessed to see if it can be avoided; secondly it must be designed in such a way as to replicate the natural environment; thirdly the area must be restored to a natural state.
- Through this Plan and other means Council will seek the protection of all forest remnants, streams and other ecologically important areas on private land.
- The Council will support incentives for caring for biodiversity on private land in accordance with the Biodiversity Action Plan (2007).
- Where appropriate Council will encourage the establishment of new permanent indigenous forest on previously unforested Council land to act as a carbon sink. Council will utilise relevant carbon credit schemes, such as Government's Permanent Forest Sink Initiative (PFSI).

### **3.4.2 Restoration**

- Restoration work carried out by the Council will be prioritised around:
  - Ensuring the ecological connectivity of reserve network
  - Enhancing the size, shape, and species recruitment of existing reserves
- There will be continual riparian cover on one or both sides of all streams flowing through Council reserve.
- Where new riparian planting is required, Council will use eco-sourced natives to create a riparian strip, no less than 5m wide where possible.
- Where existing vegetation occurs adjacent to streams in Council reserves, manage this to ensure the stream is shaded and that no pest plant species are present.
- Where there is a significant barrier to fish passage in a section of stream flowing through Council reserve, then fish passage shall be restored as resources allow.
- Council will encourage and support local communities and interested groups to develop community catchment plans.
- Community interest groups involved in planting within the northern management area will be consulted on specific planting priorities and programmes.
- The Council recognises the important role individuals, community-based organisations, landowners and private businesses play in

restoring the indigenous ecosystems of the northern management area and will support community initiatives with advice and, where possible, plants and other materials.

- All restoration work shall be carried out with eco-sourced plants.
- Support community revegetation, restoration and education programmes in accordance with the Biodiversity Action Plan (2007).

### **3.4.3 Pest management**

- Plant and animal pest management will be carried out in accordance with the relevant policies and priorities set out in the Council's Pest Management Plan 2005.
- In addition to the priorities stated in the Pest Management Plan, plant and animal pest management will be prioritised as resources allow to:
  - Areas representative of the biodiversity of the northern area
  - Areas required to fill gaps in ecological connectivity
  - Areas required to fill gaps in the representation of the biodiversity of the northern area
  - Community priorities

### **3.4.4 Monitoring**

- The Council shall ensure that the ecology of the north is represented in city-wide monitoring programme, and that monitoring is carried out in accordance with the Biodiversity Action Plan (2007).
- Council will monitor key reserves to ensure indigenous forest resilience and health.
- Support community monitoring programmes to increase understanding of the biodiversity of the northern area.

### **3.4.5 Fire**

- To minimise the threat of fire risk, open fires will be strictly prohibited on Wellington City Council lands unless authorised by Council.
- A buffering of fire resistant plants will be planted in high fire risk areas

## 4 Recreation

### 4.1 Existing Conditions

The open space system in the northern suburbs provides for a range of outdoor recreation uses and activities through the provision of

- Community Parks
- Local Parks
- Sportsfields
- Bush Reserves and open space, and
- Tracks and walkways within these open spaces or as connectors between them.

Within these areas a range of recreational activities occur that can be divided into 4 main categories:

- **Informal activities**- such as jogging, walking, biking, dog walking, skateboarding and childrens play
- **Organized sports** such as soccer, rugby and cricket
- **Private club/group activities** such as guides, bowls, horse riding and playcentre. Note some of these are also organized sports activities.
- **Commercial facilities/attractions** such as Tag War games

Whilst many of these activities are limited to certain types of area, for instance sportsfields are primarily used for organized sports, others such as children's play (playgrounds) can occur in community parks, local parks and sportsfields. This is because provision of outdoor recreation activities is based on current community needs and not historical distribution of open space. This section will look at the provision of open space for recreation in the northern suburbs and will identify:

- How the current open space system provides for recreation activities
- What changes are needed to improve provision
- Additional areas required

#### 4.1.1 Community Parks

Community parks are key areas of suburban open space with the following characteristics:

- An area of public open space provided within a suburban residential area.
- Provide for a range of informal recreation activities for all age groups.
- Have an emphasis on providing for the needs of the local community, this may include; easy pedestrian access, play equipment and seating, flat or gently undulating grass areas, and adequate space for running and informal ball games.
- Provide space for community events.
- Are typically located centrally within the geographical community, ideally within walking distance of residential dwellings.

*Insert Map 6 Reserve Facilities*

- Are safe (i.e. observable from other houses or open spaces, have safe exit and entry points).
- Contain and/or capture community character and sense of place.
- Have high amenity values.

There are 4 community park groupings in the northern area. Table 3 shows their location and major facilities.

Table 3 Community park groupings

<b>Community Park</b>	<b>Site number</b>	<b>Facilities</b>
Grasslees Reserve, Tawa	1814/1790	<ul style="list-style-type: none"> <li>• Community playground,</li> <li>• Roller skating rink,</li> <li>• Rose Garden,</li> <li>• Dog exercise area,</li> <li>• Toilet facilities</li> </ul>
Willowbank Park, Tawa	1828	<ul style="list-style-type: none"> <li>• Local playground,</li> <li>• Dog Exercise area,</li> <li>• Bush tracks,</li> <li>• Toilet facilities</li> </ul>
Churton Park Lakewood Reserve	540/1628	<ul style="list-style-type: none"> <li>• Community playground,</li> <li>• Sportsfield and pavilion,</li> <li>• Dog exercise area,</li> <li>• Walkways,</li> <li>• Tennis club</li> </ul>
Johnsonville Memorial Park/Alex Moore Park	1604/493/162/166	<ul style="list-style-type: none"> <li>• Local playground,</li> <li>• Half court,</li> <li>• Rose garden,</li> <li>• Tennis club,</li> </ul>

#### 4.1.2 Local (Neighbourhood) Parks

These are smaller parks servicing their local community. There are 52 local parks in the northern area. They have the following characteristics:

- Have a lower profile area generally and not known of by non-residents.
- May contain play equipment but generally with limited facilities and amenities. (27 local parks in the Northern suburbs have play equipment.)
- Often lie on a pedestrian/commuting route and are typically bordered on several sides by houses.
- Generally have limited amount of appropriate space for further development.

The distribution is historic and reflects patterns of subdivision. Given the built nature of many of these suburbs the ability to change the distribution and number of local parks is very limited. The focus needs to be on whether individual parks need upgrading and if they are still relevant to the needs of the local community.

Map 6 shows the current distribution of local (neighbourhood parks) in the northern area. Provision of play areas is addressed in section 4.1.4.

### **4.1.3 Sportsfields**

There are 13 sportsfields in the northern area. They have the following characteristics:

- Are designed for, and used by organised sport.
- Have formally maintained sports turf for a mixture of winter and/or summer sport.
- Are likely to be maintained to an appropriate standard for the sports code use.
- Have toilets, changing facilities and car parking which are likely to be available
- May have resident sports club facilities.

Table 4 Sportfields

SPORTSFIELDS	SITE CODE	GRADING	WINTER SPORTS CODES	SUMMER SPORTS CODES	USED FOR TRAINING	PAVILIONS (toilets and changing rooms)	CLUB ROOMS	Upgrade proposed in next 10 years
Alex Moore Park	P0495	Higher senior grades	Soccer, Rugby	Cricket, Softball, Touch, Athletics	✓	✓	✓	
Churton Park	P0540	Junior/Senior	Soccer	Cricket	✓	✓		
Grenada North Park	P1956	Lower senior grades	Soccer, Basketball	Cricket	✓	✓	✓	10+ yrs
Helston Park	P0535	Elite	Rugby	Softball, Touch	✓		✓	
Kowhai Park	P1799	Junior	Junior Rugby					
Linden Park	P1917	Higher senior grades		Cricket		✓	✓	
Linden Park West	P1797	Junior/ Lower Senior Grade	Hockey	Cricket, Soccer	✓	✓		
Lyndhurst Park	P1804	Higher senior grades	Rugby		✓	✓	✓	
Mark Ave Park	P1899	Junior	Junior Soccer		✓			
Newlands Park	P0103	Senior	Soccer, Rugby	Cricket, Softball	✓	✓		
Pinkerton Park	P0467	Lower senior grades	Soccer	Softball		✓		
Raroa Park	P1065	Senior	Soccer, American Football	Softball	✓	✓		
Redwood Park	P1807	Higher senior grades	Soccer, Rugby	Softball	✓	✓	✓	

#### 4.1.4 Playgrounds

The Wellington City Council Playground Policy 2002 identifies four categories of playground (centralised, community, local and local basic). The basic provision in the policy is that

- A significant majority of dwellings should be within 800 metres of a community Playground
- A significant majority of dwellings should be within 600 metres of a Local Playground

The standards are designed to be the ideal to be achieved where possible but not as an absolute standard for existing areas.

There are currently 31 playgrounds in the northern area, no centralized, 4 community, and 27 comprising local and local basic.

Table 5 Community Playgrounds

Site Name	WCC Site Number	Description	Condition
<b>Grasslees Reserve</b>	1814	Community	Good quality
<b>Churton Park and Play Area</b>	540	Community	Upgraded in 04/05
<b>Helston Park and Play Area</b>	535	Community	Upgraded in 03/04
<b>Duncan Park and Play Area</b>	1869	Community - excellent new play area	Upgraded 07/08

Table 6 Local and local basic playgrounds

Site Name	WCC Site Number	Description	Condition
<b>Wall Park &amp; Play Area</b>	1831	Play area with new 1/2 court with matting	Average
<b>Tui Park Play Area</b>	1818	swing/whirl/see-saw plenty of open kick about space- next to kindy	Good condition, safety surface upgraded 05/06
<b>Kowhai Park and Play Area</b>	1799		Poor
<b>Mahoe Reserve</b>	1806	Swings with baby bucket seats only	Poor
<b>Raroa Park</b>	1827	swings/seesaw/	Poor

<b>Victory Crescent</b>	1812	Swings /fort/slide	Good
<b>Coronation Park</b>	1822	Play equipment for little ones - swings etc. fenced play area	Upgrade
<b>Lyndhurst Reserve</b>	1804	separate play area/ swings/seesaw	Upgrade
<b>Larsen Park &amp; Play Area</b>	1856		Poor condition.
<b>Taylor Park &amp; Play Area</b>	1830	Swings/new matting	Average
<b>Willowbank Reserve</b>	1828		Good quality 10-15 yrs life
<b>Brasenose Park and Play Area</b>		Basic	poor
<b>Grenada North Park &amp; Play Area</b>	1956	Fort/swings/ playing courts. Well used	Average
<b>Grenada Village Play Area</b>	1243	Excellent new play area – upgraded 2005.	Excellent
<b>Chorley Grove</b>	1415	Basic Play area	Average
<b>John Walker Park</b>		Basic play area	Average
<b>Burbank Crescent Play area</b>		Basic play area with poor drainage	Poor
<b>Pinkerton Park</b>	467	decommissioned	
<b>Cheyne Walk Play Area</b>	531	Steel pipe see saw/swings/whirl	Average
<b>Edgecombe Street Play Area</b>	637	Play Area. Steel slide	Poor
<b>Lyndfield Lane Play Area</b>	496	Swings/whirl/see saw	Average
<b>Newlands Mall Play Area</b>	2313		Good
<b>Salford Street Play Area</b>	517	steel seesaw/swing/whirl	Very poor
<b>Meekwood Reserve</b>	528	fort structure and one slide	Poor
<b>Johnsonville Memorial Park</b>	493	junior and senior play equipment	Excellent
<b>Branscombe St</b>	671	two sets of swings	Poor

<b>Play Area</b>		good kick about space	
<b>Kipling Street Play Area</b>	502	seesaw/whirl/swings	Average
<b>Gilbert Young Play Area</b>	510	seesaw/whirl/swings	Average

The northern ward has the highest proportion of young people in Wellington (aged under 15 years). Approximately 18% are aged under 12 years while a further 18% are aged 12-24 (youth). There are also more households containing couples with children (65%) than Wellington in general (57%). An assessment has been carried out over current provision of playgrounds in the northern area. This has looked at adequacy of provision within existing suburbs and play area requirements as part of new subdivision development.

#### 4.1.5 Youth Facilities

Youth facilities provide for children in the 12-24 age group and are located as follows:

Table 7 Youth facilities

<b>Park</b>	<b>Site number</b>	<b>Facilities</b>
Grasslees Reserve, Tawa	1814/1790	<ul style="list-style-type: none"> <li>• Roller skating rink,</li> <li>• Skate Park( adjacent to Tawa Pool just north of the Park)</li> </ul>
Wall Park and Play Area		<ul style="list-style-type: none"> <li>• Half Court</li> </ul>
Duncan Street Railway	1793	<ul style="list-style-type: none"> <li>• BMX track, upgraded in 2007.</li> </ul>
Grenada North Park and Play Area		<ul style="list-style-type: none"> <li>• Basketball court</li> </ul>
Victory Crescent Park		<ul style="list-style-type: none"> <li>• Half Court</li> </ul>
Johnsonville Memorial Park and Play area		<ul style="list-style-type: none"> <li>• Half Court – not specifically at the Memorial Park, but around the corner at the Wanaka St Park.</li> </ul>
Newlands Park		<ul style="list-style-type: none"> <li>• Skatepark</li> </ul>

#### 4.1.6 Dog Exercise Areas

There are 11 dog exercise areas in the northern area. These are designated under the Dog Control Policy 2004 as areas where dogs can be exercised off leash provided the owners maintain control over their dogs at all times. The following table shows the location of dog exercise areas.

Table 8 Dog Exercise Areas

<b>Dog Exercise Area</b>	<b>Site number</b>	<b>Facilities</b>
Arthur Carmen Park, Tawa	1788	Large area in terraces and adjacent carpark
Duncan Park, Linden Avenue Tawa	1870	Small area at southern end of Park. No fence between this area and playground at northern end
Graslees Reserve, Main road, Tawa	1814/1790	Western Side of stream to main road. No fence between area and main road.
Taylor Park	1830	Southern area of park adjacent to railway line. No fence
Willowbank Park	1828	Two exercise areas in this reserve. One between the public toilets and the scout hall. The other on eastern side of the stream.
Churton Park	540	Area between Halswater Drive and sportsfield
Edward Wilson Park	1058	Small exercise area above Middleton Road
Seton Nossitor Park, Paparangi	1406	The valley floor to the titoki grove. Well used area.
Spnmoor Street Park	506	Looks like it covers the whole sportsfield area
Waihinahina Park, Newlands	1085	Large flat exercise area
Meekwood Reserve	528	On Ohariu Road side of reserve up to crest of hill
Flinders Park, Johnsonville ( In OGB area)	1260	Well used area below old Coach Road

#### **4.1.7 Other facilities**

*Tag War Games:* Tag War Games lease land in Caribbean Reserve off Caribbean Drive in Grenada North. They have operated here since 1999 and run a commercial war games type leisure activity. The current operation comprises a container for booking and several building and structures throughout the area. It is a seven day a week operation primarily catering for organized groups who book a time for its use.

*Newlands Paparangi Horse Riding Society:* The club has been based at Glenside Reserve for over 15 years and are the main users of the site. They graze up to 15 horses, use the flat field as an exercise area and dressage ring, and have the use of several temporary and permanent buildings for storage, facilities, and clubrooms.

## 4.2 Issues and Opportunities

### 4.2.1 Community Parks

#### 4.2.1.1 Gaps in existing network

The characteristics of an optimum community park are presented in Table 9. These have been developed from the Playgrounds Policy, information from New Zealand Recreation Association, and best practice from other Councils. The optimum will not necessarily be appropriate in every situation, and it is important to consider how well each community park serves local needs and how it fits in with the local setting.

Table 9 Characteristics of an optimum Community Park

Accessible	<ul style="list-style-type: none"> <li>• Located within 10-15 mins walking distance of residential dwellings.</li> <li>• Accessible via safe and convenient walking and cycling routes - access should not include the need to cross arterial roads, railways or other major physical barriers.</li> <li>• Accessible for all</li> <li>• Car parking space available.</li> <li>• Connectivity to public access ways, recreation networks and other recreation facilities.</li> </ul>
Safe	<ul style="list-style-type: none"> <li>• Observable from neighbouring houses and/or other public areas.</li> <li>• A number of safe entry/exit points.</li> <li>• Follow best practise in safety design.</li> </ul>
Size	<ul style="list-style-type: none"> <li>• Enough flat or gently undulating space for running and informal ball games/kick-about.</li> </ul>
Environment	<ul style="list-style-type: none"> <li>• Sheltered from wind with good aspect</li> <li>• Shade available</li> <li>• Natural green space</li> <li>• Heritage or local character enhanced</li> </ul>
Facilities	<ul style="list-style-type: none"> <li>• Toilets</li> <li>• Play equipment</li> <li>• Infrastructure to support community events</li> <li>• Picnic area</li> <li>• Space for multiple informal recreation activities</li> </ul>
Functionality	<ul style="list-style-type: none"> <li>• Good flow and user-friendly</li> <li>• Follow best practise landscape design principles</li> </ul>

From an assessment of the above there is a gap in provision in the Newlands Papanangi area. The ideal location would be in Newlands Park but there are some limitations. These include:

- Limited car parking space available.
- Exposed site

- No playground

An upgrade of the existing park needs to be carried out in conjunction with the redevelopment of the Newlands Mall just over the road to ensure complimentary of facilities.

#### 4.2.1.2 Future growth

The Northern Growth Management Framework predicts growth of around 10,000 people over a 20 year period from 2003. This growth is predominately in Stebbings Valley and the Lincolnshire Farm area. It is estimated that growth of around 2,000 people has already occurred – mainly in Churton Park, Greenacres and West Johnsonville with an average of 220 new houses built each year since 2001. Approximately 20-25% of the population in the area is currently school aged.

The bulk of the remaining development will occur in Stebbings Valley and Lincolnshire Farm area. Both of these areas will take around 15 years to develop fully.

- Stebbings Valley can accommodate around 1,300 houses with these being developed from 2008 onwards. This is split into two areas – lower Stebbings, which is currently zoned residential (800 houses), and upper Stebbings (north of the power lines – 500 houses) which is still zoned rural
- Lincolnshire Farm can accommodate around 1,200 houses. While some development is currently occurring in the Woodridge and Mark Ave area the bulk of the area is more likely be developed from around 2009.

Each of these subdivisions will need one community park to service the surrounding residential areas. Provision has already been made for a community park in the Lincolnshire Farms Structure Plan. Development of this park will occur as part of the development of the subdivision. Final plans for Upper Stebbings have not yet been approved but a suitable location will be discussed with the developer as part of a Reserves Agreement.

#### 4.2.1.3 Existing community park upgrades

An assessment was carried out in 2006 on community park provision in Wellington City and an assessment done on priorities for upgrade. In respect of the northern suburbs, the sequence for upgrading parks, approved by Council is:

1. **Johnsonville Memorial Park** is the highest priority because of its location in the growth spine. Johnsonville has been identified as a future major destination hub for both suburban centre and high density housing use. An upgrade of this park must align

with the Johnsonville town centre long term overall concept and action plan. There may be an opportunity to co-ordinate the upgrade with the Keith Spry Pool extension project. In addition its relationship with Alex Moore Park and the provision of facilities between the two areas should be investigated.

2. **Grasslees Reserve** is the second priority given the high proportion of youth in Tawa and the need to upgrade the skating rink and create a better connection through to the pool. Its central Tawa location is ideal to serve the Tawa community as a whole. This will also fit in with the development of the Porirua Stream Walkway and cycleway, identified in the Open Space Access Plan.
3. **Willowbank Park** is considered to be a lower priority against the parks identified above. This is due to its location on the fringe of Tawa and the limited number of residential homes surrounding the park.
4. **Churton Park and Play Area** is not a priority given the major upgrade works both in Lakewood Reserve and Churton Park over the past 5 years including a new playground in Churton Park. Future works may be required to link the park areas with the new suburban centre being proposed on the corner of Westchester Drive and Halswater Drive.

#### 4.2.2 Local (Neighbourhood) Parks

While many local parks serve the neighbourhood well, there are some parks that require further assessment to ensure they are continuing to provide an effective service to the local community and decisions made to upgrade, change use or divest.

**Arthur Carmen Park** – This 1.8 hectare park consists of a large car park and three flat grassed terraces adjacent to the motorway between Linden and Greenacres. It was formerly used for horse grazing and was leased to the horse club. It is now designated as a dog exercise area.

The park is used as a thoroughfare between Collins Avenue and Mexted Terrace. With the adjacent play area at Tui Park only 100 metres away this park is little used. The flat terraces, however would lend themselves to sports activity such as junior sport.

**Pinkerton Park** – This 3.5 hectare park is situated about 400 metres from Newlands Park and the Newlands suburban centre. It contains a large area used for junior soccer in winter and until 2007 contained play equipment. This has been removed as part of the policy to rationalise play areas under the Playgrounds Policy.

**Jay Street Reserve** – This 0.4 hectare local park is situated off Bushlands Grove adjacent to Newlands College. The park is secluded and not well used. It contains play equipment in poor condition which is due to be removed permanently as part of the policy to rationalise playgrounds. Several years ago discussions took place with Newlands College about possible acquisition of this land for addition to the sportfields at the College. The College no longer require this land and the Council will assess the need for this reserve in future.

**Lyndhurst Park and Play Area** – A section of this park on the northern side of Lyndhurst road has a small kick around area and an accessway through to Romney Square. Given the large park and play area over the road there seems to be little demand for this area.

In addition to the above, an assessment has been carried out to see if additional local parks will be required during the major new subdivisions in Lower Stebbings Valley and Lincolnshire Farms.

In Lincolnshire Farms the proposed structure plan identifies the need for 1 local park as well as the main community park.

### **4.2.3 Sportsfields**

Demand is growing, but the city's sports fields including those in the northern area are already used beyond what they can physically sustain. This poses a number of significant challenges:

- Wellington's topography creates physical constraints – there is only so much flat land.
- Increasing demand and changing use patterns make it difficult to provide a suite of sport facilities that spread available resources equitably – between summer and winter codes; between junior, senior, representative and elite sports; between formal and informal recreation; between long established codes and new and emerging sports.
- Growing populations and changing demographics mean needs and expectations will change over the coming 10-to-20 years.

Practical management issues add another layer of complexity:

- Wellington's weather can compromise access to sports fields, especially during wet winters.
- Teams need to train, but training can severely undermine the quality of fields for match play.
- Longer seasons (especially for winter codes) mean increasing seasonal overlap. Not only does this increase competition between codes, it means less time for the Council to repair and prepare grounds for the new season.
- Sports fields built on closed landfills are difficult to maintain because of ongoing subsidence and, in some cases, gas build up.

Top priorities in the short-to-medium term are:

- Developing recreation hubs, to provide a central focus for communities and codes. While Wellington’s topography provides a challenge, it also creates a variety of distinct suburban areas, where a recreation hub can add to local character and identity and residents’ sense of place. There is currently one major hub in the north, Alex Moore Park. Grenada North Park is potentially another recreation hub as residential development and transport links develop over the next 10 to 20 years.
- Identifying possibilities for partnerships to access both flat land and external funding. Schools offer an opportunity to gain access to flat land, Partnerships are also an opportunity to attract outside funding, particularly through partnerships with regional sports organisations, community trusts and the Ministry of Education. .
- Providing dedicated training areas, to take pressure off match grounds. Artificial surfaces are preferred, to increase durability, and one option is to co-locate these at recreation hubs, or at schools.

Council is actively working with sports clubs to ensure they are sustainable and where possible to facilitate amalgamation between clubs to ensure they remain viable and make efficient use of buildings and facilities on sportsfields.

A good example is a project at Alex Moore Park looking at how the current facilities can be rationalised on the park and used by a range of sports clubs. This will involve remodelling the current cricket club building into a multi use facility which is also available for community use. The current partners in the project are Johnsonville Softball club, North Wellington Junior Football Club, North Wellington Association Football Club, and Johnsonville Cricket Club

#### 4.2.4 Playgrounds

An assessment has been made on the future requirements in subdivisions recently completed or in progress such as Woodridge in Newlands, or proposed such as Stebbings Valley and Lincolnshire Farms. The following table identifies where future provision of playgrounds will be made.

Table 10 New playgrounds proposed

Site Name	WCC Site Number	Description
<b>Kentwood Drive Reserve, Paparangi</b>	2569	This 2.5 hectare reserve is a mixture of regenerating native bush and a flat kick around area adjacent to Kentwood Drive. A local playground here would service the upper part of Woodridge.
<b>Amesbury Drive Reserve, Churton Park</b>	2359	This small reserve adjacent to Amesbury Drive is an ideal location for a community playground being located about a kilometre

		north of the community playground in Churton Park. This is the site for a new school in Churton Park. The playground would service both the school and the wider community.
<b>Pikitanga Reserve,</b>	2402	This small reserve off Pikitanga close is one of the few flat reserve areas in the Greenacres/Woodman Drive area. An ideal place for a local playground. There are no playgrounds east of the motorway in this area.
<b>South Stebbings, Churton Park</b>	Not applicable	The reserves agreement for this area proposed one local playground adjacent to the Stebbings stream in the eastern part of the area.
<b>North Stebbings, Churton Park</b>		No reserves agreement has been prepared yet but the intent is to have one community playground/Park in northern Stebbings with addition local play areas to be confirmed.
<b>Lincolnshire Farms</b>		The structure plan shows a Community Park which will include a community playground.

It is proposed that 6 playgrounds in the northern suburbs be decommissioned over the next 10 years. This will link in with the refurbishment of nearby playgrounds to ensure adequate provision remains for local communities.

Table 11 Playgrounds to be decommissioned

<b>Site Name</b>	<b>WCC Site Number</b>	<b>Description</b>	<b>Condition</b>
<b>Kowhai Park and Play Area</b>	1799		Play equipment to be removed over time
<b>Mahoe Park</b>	1806	Swings with baby bucket seats only	To be decommissioned when upgrade to Raroa undertaken.
<b>Larsen Park &amp; Play Area</b>	1856		Poor condition. Look to decommission when Lyndhurst upgraded.
<b>Burbank Crescent Play area</b>			Poor condition and poorly drained site. Possible decommission when Edward Wilson Park upgraded.
<b>Pinkerton Park</b>	467	decommissioned	Still a few pieces there to be gone in next 6 months.
<b>Meekwood Reserve</b>	528	fort structure and one slide	Look to decommission when upgrade to Branscombe

### **4.2.5 Youth facilities**

Historically, the provision of youth facilities in the north has been based on local community requests rather than a comprehensive plan for the north. The Northern growth Management Framework identified the need for a skateboarding facility.

Youth facilities that have been requested previously and need further assessment include:

- BMX track in Newlands/Paparangi area
- Mountain Bike skills areas
- Half courts
- Skateboard facilities such as at Grenada North Park

### **4.2.6 Dog exercise areas**

An assessment of the northern management area dog exercise areas has shown the following:

- Several of the areas are not fenced off from busy roads and railway lines, for instance Taylor Park
- Woodridge, Stebbings and Lincolnshire Farms will require dog exercise areas in future to cope with demand
- There are opportunities to develop a dog exercise park as a destination for dog owners. One possible option would be Waihinahina Park in Newlands.

## **4.3 Objectives**

- To provide outdoor recreational opportunities and experiences that are environmentally and socially sustainable and accessible to communities.
- Ensuring the provision of recreational opportunities and experiences keeps pace with population growth in the north

## **4.4 Policies**

### **4.4.1 Community Parks**

- Community parks should be located centrally within communities, ideally within walking distance (10-15 minutes) of residential dwellings and provide for a range of informal recreation activities for all age groups.

#### **4.4.2 Local parks**

- Local(neighbourhood) parks will be provided to serve their local community and contain play equipment (subject to the provisions of the playgrounds policy) but generally with limited facilities and amenities.
- Ensure that future reserves agreements have an adequate distribution of local parks and playgrounds consistent with the playgrounds policy.

#### **4.4.3 Sportsfields (based on those in the Recreation Strategy 2003)**

- To ensure the availability of a diverse range of recreation opportunities that satisfies the needs of Wellington citizens and visitors.
- To improve the access for all citizens to sport, recreation and leisure facilities and activities.
- Make more intensive use of and improve the linkages between sportsfields, recreation facilities and resources in the city.
- To encourage active and on-going partnerships between organisations involved in the provision of sport and recreation and Council.
- To increase participation in all forms of sporting, recreational and leisure activity in Wellington.

#### **4.4.4 Youth facilities**

- Facilitate a study on youth outdoor recreation needs for youth in the northern area.

#### **4.4.5 Dog Exercise Areas**

Council's Dog Control Policy was approved in September 2004 and has a general policy relating to the provision of exercise areas:

- To provide for the reasonable exercise and recreational needs of dogs and their owners.

## **5 Tracks and Access**

### **5.1 Existing Conditions**

The track system in the northern area has developed mainly to serve individual reserves rather than to link the reserve network together. There are currently no major walkways such as the City to Sea (Botanic Garden to Island Bay) in the north. The nearest is the recently opened Wellington section of the Te Araroa Walkway which passes through Ohariu Valley and Spicer Forest to Porirua.

The existing open space access network can be described as follows:

#### **5.1.1 Takapu and Tawa east**

Most are short tracks in reserves such as Larsen Crescent, Wilf Mexted Reserve, Woodburn Drive Reserve and Willowbank Park. While they provide very different user experiences, they cater only for less active forms of recreational use.

There are no formal links from Tawa to the Outer Green Belt. Redwood Bush and Tawa Bush Reserves on the edge of the urban fringe have very limited track systems although there is an extensive network of informal tracks through these reserves and private land up to the ridgeline.

The motorway, Porirua stream and railway line put constraints on east west links. Neither are there good north south links from Linden Road to Willowbank Park.

#### **5.1.2 Churton Park, Stebbings and Glenside**

Reserves in Churton Park were specifically planned as part of the subdivision development process. There are a number of short local tracks of a high standard but no track network or links outside the Churton Park community particularly to the west and the Ohariu Ridge. This land is in private ownership with no public access. There is no existing track system in the Glenside community.

#### **5.1.3 Grenada North to Newlands**

The northern part of this sector lies on the western slopes of the Horokiwi Ridge and contains a series of valley systems with grazing on ridges and spurs, and some regenerating bush in valleys. The only major track runs from Caribbean Drive Reserve up to Horokiwi Road.

*Insert Map 7 Northern Reserves Tracks and Proposed Links*

The track system in Newlands is centred in Seton Nossiter Park. There are only a few tracks in other reserves and parks in Newlands, and no links to neighbouring communities.

#### **5.1.4 Johnsonville**

There are no tracks in Johnsonville outside the Outer Green Belt area.

### **5.2 Issues and Opportunities**

The northern part of Wellington has not had the benefit of access to more extensive outdoor spaces and opportunities. The central part of the City is well served by the Town Belt and there is reasonable access to Wellington's Outer Green Belt and the South Coast. Access to Belmont Regional Park is well developed from the Hutt Valley's western suburbs. For the northern area of the city there are significant opportunities but access is poorly defined or non-existent. There is also a need to connect communities as identified in the NGMF.

#### **5.2.1 Open Space Access Plan 2004**

In 2004 Council approved the Open Space Access Plan. The proposed initiatives in the plan relevant to the north are:

##### **The Northern Network – Tawa, Glenside, Churton Park, Newlands and Grenada**

The northern suburbs have few tracks. A track network would provide local and regional benefits with links to Belmont Regional Park.

##### **The Harbour Escarpment Walk**

Although Ngauranga Gorge forms a deep division between Khandallah and Newlands, there is potential to link existing park and reserve areas and create the harbour equivalent of the Skyline Walkway. The Harbour Escarpment Walk would be an exposed but exciting track starting at Waihinahina Park (the ex Horokiwi landfill) in Newlands, running through to Ngauranga and along the coastal escarpment to Kaiwharawhara. This track could then cross over to the harbour and connect with the proposed Northern Gateway development and the waterfront.

#### **5.2.2 Access to the Outer Green Belt**

##### **Spicer Forest and the Outer Green Belt**

A major opportunity exists for Tawa, Churton Park and Porirua residents to enjoy greater use of Spicer Forest, the Outer Green Belt, and Colonial Knob. Access from Upper Stebbings Valley (site for future residential development) is also potentially an important link.

There are three possible links,

- Churton Park from the reservoir in the lower Stebbings subdivision, over private land to Council property at 944 Ohariu Valley Road and onto Spicer Forest.
- From Redwood Bush through private land to Council land at 944 Ohariu Valley Road and onto Spicer Forest. This land will eventually be part of the upper Stebbings subdivision.
- The third link at the northern end of Tawa, could join Tawa Reserves with northern Spicer Forest and onto Colonial Knob in Porirua.

### **5.2.3 Access to Belmont Regional Park.**

Access to Belmont Regional Park from the western side is currently limited. The main access is from Horokiwi. The current link from Caribbean Drive to Horokiwi could be extended into Belmont Regional Park with a future linkage down into the northern end of Lincolnshire Farms and down Belmont Stream into Seton Nossiter Park.

### **5.2.4 North – South links**

There are opportunities for track networks to link north to south following the Porirua Stream. This would provide a framework joining suburbs as well as key reserve areas within suburbs. In addition they would provide flat accessible access for users. Key opportunities are:

#### **Porirua Stream Walkway and Cycleway – Tawa**

This 3.5 km track would link Willowbank Park and Linden Park following the stream and railway corridors as well as linking key reserves such as Grasslees. It could eventually link with the Porirua track and cycleway to the north which will eventually extend to Titahi Bay and the proposed streamside walkway to the south from Tawa to Glenside.

#### **Middleton Road – Glenside to Willowbank**

This 5km link would start in Glenside Reserve and follow Middleton Road northwards to Willowbank Park. This is seen as an infrastructural link that will need to be developed in conjunction with road improvements.

### **5.2.5 Cross Valley links**

There are several opportunities to develop cross valley links joining up with the major north south links such as the Porirua Stream walkway

#### **Horokiwi to Porirua Stream link**

A cross valley link could be developed from Horokiwi down through Caribbean Avenue Reserve to Willowbank Park where it joins the proposed Porirua Stream track and cycleway. In the longer term a northern link from

Caribbean Drive Reserve via Woodburn Reserve and onto Wilf Mexted Reserve could be achieved.

### **Seton Nossiter to Glenside Reserve**

From Seton Nossiter a cross valley link could be developed via Mark Avenue Extension across the Churton Park motorway overbridge and through Glenside Reserve to the Porirua Stream. From here there are a couple of potential links through Churton Park reserves and onto the Outer Green Belt

## **5.2.6 Types of Use**

The current focus on short bush walks and tracks within reserve areas caters primarily for walkers. Two other key user groups in the north are mountain bikers and horse riders.

### **Mountain bikers**

The current Off Road Mountain Bike Policy is under review. The policy has as one of its major principles that all tracks are open to mountain bikes unless declared closed. Currently in the north the following areas are closed:

Redwood Bush Reserve, Seton Nossiter Park (excluding the section between Bushlands Grove and Mark Avenue), and Wilf Mexted Reserve.

Given the current provision of tracks and closure of several reserves there are not many opportunities for mountain bikers in the north from beginner level through to advanced. Opportunities exist to ensure that any new tracks developed are dual use for walkers and bikers. Key track developments that will provide opportunities for bikers include:

- Porirua Stream walkway and cycleway
- Harbour escarpment
- Links into Horokiwi and Belmont Regional Park
- Links into the Outer Green Belt and Spicer Forest. This area could provide a major mountain biking facility in future for both Wellington and Porirua residents.

### **Horse Riding**

Horse riding in the north is restricted to pony club and riding venues such as Newlands Papparangi Horse Riding Society at Glenside Reserve and Woodburn Reserve which was identified as an area for horse riding at the time it was taken as a reserve contribution following subdivision of the surrounding land. The current by laws do not allow horses in reserve areas (Reserves and Swimming Pools bylaws 16.4.1 (g)). However some management plans including the Outer Green Belt Management Plan do permit Council to declare areas open to horses.

## **5.3 Objectives**

### **(adapted from the Open Space Access Plan)**

- Develop a quality primary network accessing major destination points in the northern area, and linking with an equitable distribution of secondary and local track networks and recreational facilities.
- Ensure that the network provides for a range of user interest, skill, abilities and fitness levels.

## **5.4 Policies**

### **5.4.1 The access network (based on the Open Space Access Plan)**

- A wide range of skill and fitness levels, abilities and interests will be catered for by the access network.
- Tracks will be shared use (ie pedestrian and cycle) wherever this is appropriate. Tracks are open for biking unless otherwise stated.
- The access network will be integrated with the wider city and regional access networks, and the transport needs of pedestrians and cyclists.
- Tracks will cater for demonstrated recreation demand where possible and appropriate.
- All tracks will be physically sustainable and have minimal environmental impact, as far as possible.
- Pest control, emergency services, and general management purposes will be catered for by the access network, where appropriate.
- Tracks will be signed and maintained to defined standards, with significant hazards identified and/or mitigated.
- Designated tracks will be available for horses and declared open for horse-riding.
- All tracks are closed to motorised vehicles except by special permission on a case-by-case basis.
- Some tracks within the network will be accessible to those with limited mobility, push chairs and wheel chairs.

NB Track development priorities are identified in the Section 8 Management Sectors.

## 6 Culture and History

### 6.1 Existing Conditions

The area covered by the Northern Reserves Management Plan has many cultural and historical associations.

This plan highlights the key historical values in relation to the reserves of the northern suburbs.<sup>11</sup>

#### 6.1.1 Maori History and significance

The two most significant areas for Maori in the north are Horokiwi and Ngauranga.

The traditional Maori name for Horokiwi is Waihinahina, which means 'the stream of the white wood'. Despite some extensive and disfiguring quarrying, it is still possible to see the stream (as a waterfall) from various vantage points, near Hutt Road. Horokiwi - 'skin swallower'<sup>12</sup> is wrongly named, being a corruption of a place named Horokiri, which is in turn a valley in Porirua (also now wrongly spelt).<sup>13</sup>

Horokiwi has a significant history of Maori occupation. Perhaps the most significant feature of this area for Maori was a track from Korokoro north to Takapu, which went over the upper Horokiwi area. One of three tracks providing access north from Wellington Harbour (the others being via Kaiwharawhara and Ngauranga), the route over Horokiwi provided access to cultivations in the Takapu Valley and to places beyond, like Porirua. There are urupa, pa and cultivation sites in Horokiwi and the area remains of considerable significance to tangata whenua.

Ngauranga was a canoe landing site<sup>14</sup> and the site of a well-established kainga when Europeans first arrived in Wellington. The attractions of the site were manifest; there was a lagoon fed by a stream – the Waitohi (or Ngauranga) Stream, all close to the sea. Behind on the hills were cultivations and, beyond, a steep gorge surrounded by thick forest.

When Ngauranga was first settled is not known, but the name is thought to originate from the period of Ngati Ira occupation.<sup>15</sup>

Two major events changed Ngauranga markedly. Firstly, the huge 1855 earthquake, which raised the general level of land around Wellington Harbour, partly drained the lagoon and created much more space for development.

---

<sup>11</sup> Based on Northern Suburbs History provided by Michael Kelly.

<sup>12</sup> Best, Elsdon 1914, 'Olla Podrida' in *Porirua And They Who Settled It*, reproduced in [www.tawahistory.wellington.net.nz](http://www.tawahistory.wellington.net.nz)

<sup>13</sup> Adkin, L. 1959, *The Great Harbour of Tara*, Whitcombe and Tombs, Wellington p.92

<sup>14</sup> Adkin, L. 1959, *The great harbour of Tara*, Wellington, p.48 as quoted in Nga Waahi Taonga O Te Whanganui a Tara: Maori Sites Inventory (Maori Sites of Te Whanganui a Tara), Wellington City Council, 1995, M50 - Ngauranga.

<sup>15</sup> Ibid.

Secondly, in 1859, work was completed on the construction of a road through the rocky gorge to Johnsonville. This road eventually turned into today's six-lane motorway.

While Tawa was not occupied by Maori for any period, it was likely to have been a place passed through between Porirua and Te Whanganui a Tara (Wellington) both of which supported Maori populations for some centuries. One of the Maori tracks between the two harbours formed the basis of Porirua Road. Another known track was between Willowbank and the Horokiwi Ridge and to Petone.

## **6.1.2 Important Cultural and Historical Reserves and Features**

### **6.1.2.1 Old Porirua Road**

Porirua Road was the main road north out of Wellington and to a large extent still exists through the north. The land through the area was well traversed by Maori prior to settlement by colonists in 1840. Some of the early Maori tracks and later bridle trails were developed to become the "Porirua Road" The road was first surveyed in 1843 and continued as an extension of a track started by Captain Daniell to his farm Trelissick. It was eventually known as "Porirua Road" but was little more than a dray track at this time.

Although some parts of the original route of Porirua Road have gone, Glenside Road, from Johnsonville to Tawa, largely follows the road's original course.

### **6.1.2.2 Wellington-Manawatu Railway Co. line**

This line opened in 1885 with commuter services introduced in 1895.

### **6.1.2.3 Seton Nossiter Park and Belmont Viaduct**

This park is made up primarily of some 13.3 hectares of land once held by the Newlands Trust Board, much of which was redesignated a Wellington City Council reserve in 1983 and later named Seton Nossiter Park. Seton Nossiter was a local farmer and Wellington City Councillor during the 20<sup>th</sup> century. Later, more land was acquired from the Trust Board.

Included within Seton Nossiter Park are the remains of what was once New Zealand's biggest timber viaduct. These are the 14 concrete abutments for the Belmont viaduct, built in 1885 by the Wellington and Manawatu Railway

*Insert Map 8 Heritage Features*

Company. Today it is possible to see at least two in the regenerating bush. The threat of fire led the W & M.R. Co. to replace the bridge in steel in 1904.

In the 1930s, during the building of the main tunnel for the Tawa Flat deviation, which ultimately ended the need for the viaduct, a huge vertical shaft was sunk here. The shaft was sealed and the spoil eventually used in the building of the nearby motorway. The deviation opened in 1937 and ended over 50 years use of the viaduct. Finally, in December 1951, the army blew it up. However, it took several blasts before the bridge was finally brought down.

#### **6.1.2.4 Glenside Reserve**

Glenside Reserve is the principal recreational reserve in the Glenside area. It was originally set aside as part of a subdivision planned in 1930. It was to occupy an area between Stebbings (now Glenside) Road and the Porirua Stream, but some of this land was used for a road, and land was offered in compensation instead. This reserve was also the site of the Tawa Flat Deviation workers' camp from 1927-1937, a New Zealand Army camp during World War II, and the Glenside saleyards for approximately 30 years from 1950 to 1980.

#### **6.1.2.5 Halfway House**

Glenside was the place where some of the families from the first New Zealand Company immigrant ship *Aurora* settled. Anthony and Susannah Wall, who arrived in 1841, built a house on land bought from Frank Johnson (for whom Johnsonville is named) and provided overnight accommodation for travellers. This became known as 'The Halfway House'. The business was issued its first license for the sale of liquor in 1842. Like any early road trip, the journey along the old Maori trails and, later, Porirua Road, was arduous, so the overnight stop was important as a place for horses and travellers to refresh.

A second Halfway House was built by John McKain in 1849 and was later known as Joseph Clapham's Halfway House, after a subsequent owner. It became important as a coaching stop. Alexander Brown built the third and largest Halfway House in 1880. This house survives today.

Halfway House and its later incarnations were one of the best known features along the Porirua Road.

#### **6.1.2.6 John Walker Park/Drake Gardens**

On the southern side of Wingfield Place, a short distance before Glenside is the site of the former home of Thomas and Ceres Drake, who travelled from London on the *Aurora*, and arrived in 1840. Drake bought a number of sections which he owned until his death in 1889, planting many trees and sending seeds to, among other places, the Botanic Gardens. His widow Ceres sold all the land, with the exception of that occupied by the homestead, to the Government under the Small Farms Settlement scheme.

### **6.1.2.7 Grasslees Reserve**

Grasslees Reserve is named after the farm established by William Best whose son, Elsdon Best is Tawa's most famous inhabitant. He was variously a farmworker, soldier, sawmiller, health inspector, ethnologist and writer. His ashes are interred in a memorial at the reserve. Best was the foremost ethnologist of his time and a prolific writer on Maori history and mythology.

### **6.1.2.8 Wilf Mexted Scenic Reserve**

This reserve contains a remnant of the original forest that covered Tawa before the arrival of Europeans. The reserve was gifted by Wilf Mexted, a great lover of trees who was a member of one of Tawa's longest established families.

### **6.1.2.9 Brandon's Rock**

Brandon's Rock is the peak on the Paparangi Range and is named for Alfred de Bathe Brandon who owned land in the Newlands area. Brandon arrived in 1840 and was a prominent lawyer, provincial councillor, parliamentarian and crown prosecutor. Brandon's land and adjoining property was the subject of two unsuccessful attempts to mine gold.

## **6.2 Issues and Opportunities**

### **6.2.1 Glenside Reserve and Halfway House**

The future use of Glenside Reserve and the use and ownership of the Halfway House needs to be determined. The Halfway House is listed as a heritage building in the District Plan and options for its conservation will be investigated. This Plan will provide a recommended direction for the future of the house and Glenside reserve.

### **6.2.2 Identification and recognition of historical sites**

In developing this plan other important heritage sites and features have been identified. Further assessment of their heritage significance needs to be undertaken to determine their potential for listing as heritage items in the District Plan or other mechanism for their protection.

### **6.2.3 Highlighting history and interpretation**

The main historical features should continue to be protected and where appropriate should provide interpretive material.

## **6.2.4 Maori History and Place Names**

Appropriate recognition of Maori history and values needs to be given to important sites. Maori names of important landmarks, ridges and valleys need to be included in Wellington City Council publications and maps.

## **6.3 Objectives**

- Recognise, protect and interpret the historical and cultural site features and values of the northern reserves.
- Facilitate and enable the exercise of tino rangatiratanga and kaitiakitanga by Wellington's tangata whenua and other Maori.
- Protect and enhance the existing character and values of Glenside Reserve.
- Conserve and develop a sustainable use for the Halfway House.

## **6.4 Policies**

- Where appropriate, Maori place names will be used in conjunction with European place names on signs and maps.
- Consultation with the NZ Historic Places Trust and with the tangata whenua will be an important part of managing historic and traditional sites and waahi tapu.
- Recognised historic sites on reserves will be protected in a manner reflecting their value and significance, in consultation with any directly affected groups or individuals.
- Sites identified as part of this plan as having heritage value will be assessed to determine their significance and potential for listing as heritage items in the District Plan.
- Where appropriate and subject to the availability of funding, historical features will be suitable restored and interpreted.
- A concept plan for the ongoing protection and enhancement of Glenside reserve will be implemented.
- A process for the refurbishment and reuse of the Halfway House will be implemented.

## **7 Administration**

### **7.1 Objectives**

- To manage Council owned reserves in a manner that reflects their reserve purpose or proposed purpose, site values and the vision and objectives for the northern reserves while providing for appropriate recreational activities.

### **7.2 Policies**

The following policies apply to all the northern reserves except where otherwise stated in this Plan or where the land is leased and under the day to day control and management of another organisation.

#### **7.2.1 Plan amendment and review**

- This plan will be reviewed within 10 years and any review will be initiated by a decision of the relevant Wellington City Council committee, following normal process under the Reserves Act 1977.

*The Council may under the Reserves Act 1977, advertise its intention to review this plan or a part of the plan.*

*The Council may in the course of a future review or before such a review, revoke an existing management plan for any reserve for which it has full authority and bring that reserve under the policies of this plan instead.*

#### **7.2.2 Relationship with other management plans and Wellington City Council policies**

- The following existing plan will be replaced by this plan.
  - Seton Nossiter Park Management Plan 1996
- In addition to its purpose under the Reserves Act 1977, this plan is also a general policy of the Wellington City Council and be used as relevant information subject to the provisions of the Resource Management Act 1991 and the District Plan, in considering resource consent applications for land use on any reserves.

*Other Wellington City Council policies will apply directly or indirectly to the northern reserves. Some of the policy statements in this Plan make reference*

*to other relevant Wellington City Council policy to avoid unnecessary repetition.*

*The District Plan and the Resource Management Act will guide the use of this Plan as relevant information in assessing resource consent applications.*

### **7.2.3 Reserve Acquisitions**

- Reserve acquisitions will be carried out in accordance with the process in Capital Spaces.
- Reserves contributions as part of subdivision shall be taken as land and/or development contribution depending on projected recreation demand as a result of the subdivision.
- Reserves shall be acquired in accordance with a prioritised programme of reserve acquisitions, in order to meet current and future recreational and ecological needs throughout the Northern Area. In particular priorities should be given to:
  - The harbour escarpment
  - Connectivity between Tawa and the Outer Green Belt
  - Land for additional sport fields in Grenada North
  - Ecosystems under represented by the reserve network or to fill gaps in ecological connectivity.
- As part of reserve agreement negotiations, consideration will be given to ecological, recreation, landscape and heritage open space values.
- Where possible, reserves shall be taken that provide interconnectivity with the existing reserves network.

*Reserve land is acquired for a number of reasons including the protection of the land and its features, the preservation of natural values, provision of recreational space and to benefit the public. Reserves may be created by subdivision, purchase, gifting, appointment to control and manage by the Crown, Public Works Act acquisitions, vesting and declaration.*

*When land is subdivided, the developer is required under the Local Government Act 2002 by way of the Council policy to make development contributions of specified value depending on the location and number of houses within the subdivision. The reserves part of the development contribution is made to ensure future adequate open space, recreational facilities and other resources for public enjoyment, or for the protection of amenity, conservation and heritage values.*

*As an area of significant residential growth, the Northern Area is subject to a number of 'greenfields subdivisions'. These subdivisions create new residential or rural residential areas as opposed to infill type subdivision where*

*sections within established urban areas are subdivided. New houses in greenfields subdivisions have both citywide and local purpose reserve needs. They are subject to a greenfields reserves development contribution payable to Council in the absence of a reserves agreement.*

#### **7.2.4 Reserve declarations, classification**

- There are different classifications for reserves including, recreation, local purpose, scenic and historic. Some reserves will be reclassified as part of this plan to more accurately reflect their use or to meet the objectives of the plan.
- There may also be reserves that are no longer required for reserve purposes as they do not serve the reserve requirements of current or future communities. These will be declared surplus and declassified in accordance with requirements of the Reserves Act 1977. Council will further consider options for the future use and ownership of these reserves.

*Most reserves are appropriately classified; however through this plan it has been identified that there is a need to meet the needs of specific user groups and the result of this is that there is a need to reclassify some reserves to more accurately reflect this need. In addition, some reserves may be declared surplus to the requirements of the area and following assessment of their future role, action will then be taken to have their reserve classification revoked.*

#### **7.2.5 District Plan Zoning**

- This plan will determine the appropriate underlying zoning of the reserves. A zone change will be made where a more appropriate zoning is identified. (see property tables in Section 8 Management Sectors.)

*Most reserves have an underlying zoning of open space. There are however some reserves that are all or in part zoned outer residential while in Council ownership. These parts may require rezoning to better reflect their reserve classification and use.*

#### **7.2.6 Community involvement in reserve management**

- Council will encourage the formation of new groups for the purposes of revegetation and beautification programmes.
- Council will engage with communities in the development of any new development plans for specific reserves.

*The communities of the northern suburbs are active in their involvement in the management of the reserves. Council will encourage community involvement through a variety of means including revegetation programmes and development of plans.*

### **7.2.7 Tangata Whenua and iwi involvement in reserve management**

- Council will work in partnership with tangata whenua where appropriate in the management of its reserves and in particular consult with tangata whenua where any site of significance or interest to Maori is affected.
- Reserves will be named in accordance with the Open Space Naming Policy 2001.
- Where a site is of significance to iwi, advice will be sought as to appropriate naming. The potential for joint naming will be explored.

*Reserves, including parks, sportsfields and play areas are named to reflect the identity of the city and/or the local area and to ensure ease of identification for Council and the public. Council's Open Space Naming Policy provides a clear process for determining names for new open spaces.*

*Under the policy and the Memorandum of Understanding with mana whenua, Council will seek input from Wellington Tenth's trust and Te Runanga o Toa Rangatira inc on the significance of the specific reserve to iwi.*

### **7.2.8 Reserve Closures and Exclusive Use**

- When necessary a reserve(s) or part of it will be closed to the public subject to the provisions of the Reserves Act 1977.

*From time to time, reserves may be closed to the public either for maintenance reasons or for an organisation staging a special event. In the case of a special event, a fee may be charged for entry by an organisation subject to Section 53(1)(e) of the Reserves Act (1977). Notice of this closure must be given in a local daily newspaper twice within two weeks of the closure. All costs of advertising are to be met by the applicant.*

### **7.2.9 Utilities**

- The effects of utilities will be minimised by only placing those that are necessary to the normal functioning of the city and which cannot reasonably be located elsewhere. The following guidelines will apply:

- All utility structures must be sited to minimise their impact on existing natural and heritage features, waahi tapu sites, visual amenity, recreational facilities and vegetation.
- In choosing sites for utilities the Council will, having regard to the nature of the utility, give preference to areas not zoned Open Space or Conservation sites and sites where there are already utilities.
- All utility structures (that involve pipes, cables, lines or similar equipment) shall be placed underground except where this is not practicable.
- The location of utility structures should not unduly compromise recreation uses or future facilities and landscape restoration works.
- The applicant is responsible for any reinstatement of natural ground, vegetation or infrastructure to the council's satisfaction.
- The utility structure must be accurately mapped and documented with plans supplied to the Council.
- All costs arising from an application for a utility lease or easement are the responsibility of the applicant.
- All utility companies having structures on Wellington City Council land will need to negotiate an agreement with the Council - setting out the terms and conditions of access and maintenance, where these details are not already provided in a lease or licence document.

*All new utilities, and all replacements and upgradings of existing utilities, will be allowed in reserves only where they are essential, all other practicable alternatives have been exhausted and the Council's specific conditions have been met based on the policies above.*

*In assessing applications for the routings of privately owned utilities the Council will consider whether the private utility intrudes unreasonably into the public's recreational enjoyment of the reserve and/or comprises the reserve's ecological or landscape values.*

*All existing and future public and private utilities crossing reserves (above and below ground) need to be accurately mapped and documented. New utilities, replacement or upgrading of existing utilities, may be permitted by the granting of leases or easements providing the recreational, ecological or landscape values of the reserve are not significantly disturbed or where the public benefits outweigh any adverse impacts on these values.*

#### **7.2.10 Motorised Vehicle Access**

- Motorised vehicle access on and through reserves covered by this plan is restricted to:
  - Appropriate and necessary management purposes under the authority of the Manager, Parks and Gardens. This will include Wellington City Council staff as well as individuals or organisations

- hired or otherwise by the Council to carry out work in the Northern Area.
  - Approved or existing legal access by utility companies subject to terms and conditions agreed between the utility company and the Manager, Parks and Gardens.
  - All emergency or civil defence services.
- Motorised vehicle-based recreation is discouraged in reserves, except when in accordance with the policies of this Plan and operational guidelines.
- Commercial motorised vehicle-based recreation or tourism activities will require a concession permit from the Council.
- Commercial concession applications for motorised vehicle-based activities will be assessed in accordance with the following criteria:
  - Demonstration of demand for commercial recreation services
  - Negligible impact on the natural environment
  - Presentation of actively pursuing the achievement of industry best-practice standards for eco-tourism (encompassing the principles of environment, social and economic sustainability).
- Clubs may obtain motorised vehicle-based access permits from the Wellington City Council for organised events; providing that all vehicles are registered and warranted as is appropriate.
- Consideration of temporary access to private properties.

*Motorised vehicle access through reserves is required for servicing, maintenance and emergency vehicles.*

### **7.2.11 Leases**

The following policies apply to non-utility leases.

- Future leases of reserve land and facilities shall only be made where the activity undertaken by the organisation applying for the lease is consistent with the objectives of this management plan and, as such, complies with the following:
  - The activity is primarily concerned with public recreation and other community purposes. Preference will be given to outdoor recreation, either active or passive.
  - The activity is open for public participation. Clubs will be encouraged to allow casual play on their facilities or, at least, that their membership shall be open to all members of the public.
- Leases will be administered in accordance with the Council's Leases Policy for Community and Recreation Groups.

*Leasing is permitted to facilitate the public use of the reserve by providing for a wider range of facilities than would otherwise be available. Any granting of a lease, which in effect gives private property rights over public land, must be tested against the purpose for which a reserve is intended and the provisions of the Reserves Act legislation. Market rentals provide a return to the public for the use of the public land.*

### **7.2.12 Commercial uses and licences**

- The Council acknowledges the likely demand for commercial recreation uses in the northern reserves. Each application will be assessed against the objectives and policies of this plan and other relevant Council policies.
- The Council will not permit commercial recreation or other commercial activities which have significant impacts on the natural environment or are likely to affect the enjoyment of the reserve.

*A commercial use may be permitted where it would primarily assist the enjoyment of the reserve by the public. Long term uses are dealt with in the section on leases. However, short term uses are dealt with through concessions.*

### **7.2.13 Encroachments**

- No new private encroachments will be allowed.
- All existing encroachments will be reviewed and which of the following options should apply based on a case by case basis, will be determined:
  - The adjacent owner who is encroaching will be required within 12 months to remove whatever item or structure constitutes the encroachment to enable the land to be returned to the reserve
  - A lease or licence may be negotiated (see Leases section 7.2.11) which will have no automatic right of renewal on expiry. If the owner requests a new lease or licence at the time of expiry, a decision will be made in accordance with criteria listed below.
- The removal of all encroaching features is the responsibility of the adjacent owner concerned. If the owner fails to comply within the time specified the work will be carried out by the Council after consultation with owner and the owner will be charged for the work.

- Where a lease or licence is negotiated for an encroachment all costs including survey costs, associated in doing so will be met by the lessee/licence holder.
- The criteria to be used for deciding the outcomes of encroachments are:
  - The effect on public recreational, ecological and landscape values. These values should not be reduced either
    - i. Materially, where the encroachment physically obstructs public access eg a building or fence, or
    - ii. Non materially where the encroachment inhibits public use by appearing to be private land for instance, a garden plot which looks like an extension of the adjoining property even though the land is not fenced off.
  - Reasons why the encroachment should not be terminated may be accepted on the basis of:
    - iii. Safety , for instance a retaining structure has been built to stabilise land such as a fence constructed as a safety barrier above a steep drop.
  - Botanical enhancements. If the encroachment is a botanical enhancement to the reserve, such as tree planting, the Council may allow it to remain provided that public access is maintained (ie public access is not discouraged nor prevented). There would be no formal right of occupation and responsibility for the ongoing maintenance of these areas would be negotiated.

*Encroachments can create the alienation of public land into private interests. This is contrary to the purposes of reserves and will be controlled.*

#### **7.2.14 Structures, Buildings and Furniture (Structures and Buildings as defined in the District Plan)**

- The design of reserve structures should take into account the natural character of the environment. All structure design shall work with each site rather than against it.
- All structures shall comply with Council policy and consent procedures. The location, design and materials of the structure, building or furniture should acknowledge and be appropriate within the context of the reserve and its environment.
- The re-location of a building onto reserve land must be in keeping with the context and purpose of that reserve.
- Opportunities should be taken to remove buildings from reserve land when no longer required for reserve use

*Structures are sometimes necessary to support the use of the reserve. However new buildings shall only be built on reserve land where they strongly support the operation of the reserve and the recreational activities on that reserve. How they are located and constructed is important to their successful integration into the reserve and its use.*

### **7.2.15 Signage and Interpretation**

- Signage and interpretation will be used to inform visitors about recreation opportunities and potential hazards, and environmental, cultural and historic values in the Northern Area. Signs will also help to manage the interface between public and private land.
- Signage and interpretation will be consistent with relevant Council signage standards. Any sign erected on a reserve must be site related, meet all other required consent processes and be approved by Council.
- Event organisers may display temporary signs subject to formal written approval.
- In general, the use of reserves for advertising purposes will be prohibited. However, existing and future sponsorship advertising relating to sportsfields will only be permitted where:
  - within the sportsground concerned, the wording is only readable from within the sports area and the structure supporting the advertising is sited as unobtrusively as possible;
  - the name of the sponsor is incorporated into the external name signs for the building provided that these signs comply with size and style requirements set out in the sign guidelines.
  - (An organisation/person shall be considered a sponsor where funding is specifically provided for the sports activities involved, eg, funding competitions, team uniforms).

*Signage plays an important part in bringing values of an area to the community's attention. Signage is also necessary to inform users about any activities that are not permitted or that need to be undertaken in a particular manner. Directional signs are needed to assist users in finding facilities and to minimise conflicting uses.*

*A proliferation of signage can however detract from reserve values and control on the number, location and design is necessary.*

## **8 Management Sectors**

### **8.1 Tawa**

#### **8.1.1 Description**

##### **8.1.1.1 Landscape**

The Tawa landscape is composed of a central axis of flat land rising to steeper ground to the east and west. A strong sense of containment is provided by the Outer Green Belt and Marshalls Ridge on the western side, and Takapu Ridge to the east. The built environment gives way to an increasing predominance of natural elements and patterns moving up onto the skyline, with a strong indigenous character to the west and a more exotic and open character to the east. Reserves within the built environment and along main roads soften the monotony and predominance of structures. Woody vegetation on steeper ground within reserves and vegetation along the SH1 corridor make a significant contribution to the coherence of the landscape and provide visual relief and amenity for immediate communities. These ribbons of native vegetation, as well as exotic shrubs and trees, are supplemented by similar patterns of vegetation on private land.

Reserves in the Tawa West area make a major contribution to this attractive and evolving landscape. The more important groups of reserves include:

##### **Reserves on the western side.**

Spicer Forest occupies a significant area of Council land within the Outer Green Belt and the forest is of considerable visual amenity value for people in Tawa. Although pines dominate there are groups of other exotic trees along the boundary and indigenous species have naturally regenerated along the lower slopes and up gullies into the pine plantation. This pattern of exotic trees interspersed with indigenous vegetation is continued along the slope into the Forests of Tane to the south and across the lower slopes of Colonial Knob to the north, providing an overall coherence along the face of the hills. A series of bush and scenic reserves, some partially contiguous with Spicer Forest, assist in the consolidation of this backdrop.

Redwood Bush, Westwood, and Charles Duncan Reserve are all an integral part of the Tawa backdrop and contribute high visual amenity value for residents. Further north two scenic reserves, for the most part located inside the Porirua City boundary, confer similar benefits for Tawa residents.

There are significant areas of open space scattered through the built environment on the western side of Tawa. A number of reserves are wholly or partially located on steeper ground covered in a mix of indigenous and exotic species. Main Road West Reserve occupies an escarpment above the road and contributes in positive ways to the travel experience as well as to the

*Insert Map 9 Tawa West Reserves*

amenity of the immediate residential environment. Victory Crescent, Lyndhurst, and Larsen Crescent Reserves all make similar contributions to their communities.

Seen from the eastern side of Tawa and from the motorway the vegetation through the reserves of Western Tawa softens the built environment and gives emphasis to the variation in landform.

### **Reserves through the central axis.**

The reserves through the central axis of Tawa including Willowbank, Main Road, Porirua Stream Esplanade, Grassleas Reserve, Duncan Street Railway, and Taylor Park form a virtual continuum of open space with mixed vegetation. These reserves make a vital contribution to the visual amenity and coherence of Tawa.

#### **8.1.1.2 Ecology**

The Tawa Basin dominates this area. Originally this basin would have been covered in forest dominated by tall conifers, in particular kahikatea and other tree species with a tolerance of moist, heavy soils eg pukatea and pigeonwood. Larsen Crescent is the only remaining area that is representative of this original cover, and there are few reserves with indigenous forest cover at all. Those that do contain indigenous forest within this area are priorities for pest animal and weed control.

Although largely modified, Porirua Stream is an important feature of the Tawa Basin, and there are many opportunities for restoring its riparian cover.

Contrary to the lack of forest within the Tawa Basin, the western hills surrounding the Basin are well vegetated, with some remnants of original forest cover. These remnants are very important for protecting a representative range of Wellington's biodiversity. They are also important seed sources and are critical to the areas ecological connectivity.

### **8.1.2 Actions and Policies**

#### **8.1.2.1 Landscape and ecology**

- Strengthen the coherence across reserves with the use of native plants, either by planting or by encouraging natural regeneration.
- Plant more woody vegetation along the Porirua Stream to enhance the landscape as well as the ecology of the stream.
- Use a selected range of exotic trees for on-going planting through the axial reserves from Willowbank to Linden Park to provide a coherent planting structure.
- Extend pest control programme to include:

- Possum control in Charles Duncan Reserve
- Weed and animal control pest control in St Annes Reserve
- Carry out indigenous riparian planting where streams run through reserves including Grasslees Reserve, Oxford Street Reserves, Willowbank Reserve.
- Monitor indigenous forest resilience and health at reserves, important for forest connectivity – Larsen Crescent, St Annes Reserve.

#### **8.1.2.2 Recreation**

- Prepare a masterplan for the redevelopment of Grasslees Reserve, including upgrading of the playground.
- Investigate future recreation options for Arthur Carmen Park and Lyndhurst Park (site 1805).
- Decommission: Kowhai Park (over time) and Larsen Park playgrounds, on the basis that other playgrounds will be upgraded nearby.
- Upgrade Coronation Park, and Lyndhurst Reserve playgrounds.
- Investigate a partnership with Tawa schools for joint provision of sportsfields facilities.

#### **8.1.2.3 Tracks and Access**

- Facilitate the establishment of the Porirua Stream Walkway and Cycleway with the Tawa community.
- Work with the owner of the lands between Redwood Bush, Tawa Reserves and the Outer Green Belt to negotiate access for walking and cycling as part of the subdivision of Upper Stebbings Valley.

Site Name	Park Type	WCC Site #/map ref	Land Area Ha	Playground	Leases and Licences	Other facilities	Legal Description	CT Reference	Reserve Description	Gazette Reference	District Plan Zoning	Actions needed
87A Main Road	Local Park	1810	0.0464				Lot 2-3 DP 74409	41D/326			Open Space B	
Arthur Carman Park	Local Park	1788	0.144			Dog exercise area	Sec 1 SO 35924	39A/414	Reserve		Open Space B	Classify and vest as Recreation Reserve. Investigate future recreation options, including suitability for junior sport.
Boscobel Lane Station Car park	Local Park	2178	0.0009				Lot 6 DP 81011	47C/175	Conservation Act 1987 and Crown Minerals Act 1991		Outer Residential	
Boscobel Lane Station Car park			0.1306				Lot 5 DP 81011 Sec 1 SO 26506	47C/174				
Charles Duncan Reserve	Ecological	1796	0.7629				Lot 1 DP 51563	D4/957	Recreation Reserve		Open Space B	Vegetation management plan to enhance amenity values of the escarpment. Ensure plantings don't create shade for houses. Possum control, assess Karaka threat, manage in liaison with adjoining area in Porirua City Council (high priority). Possible track link through here to open space in Porirua.
Coronation Park	Local Park	1822	1.0529	Local	Girl Guides Tawa Scout Association Tawa		Lots 26-29 DP 10529	624/57	Recreation Reserve	1954 p1340	Open Space A	Prioritise replacement and upgrade of play equipment
Cullen Park	Local Park	1914	0.09				Lot 101 DP 53938	14A/1403 cancelled	Recreation Reserve- Subject to the Reserves Act 1977		Open Space B	
Duncan Park and Play Area	Local Park	1869	0.4695	Community		Dog exercise area	Lot 26 DP 15397	790/45	Fee simple		Open Space B	Classify and vest as Recreation Reserve. Possible site for public toilets in conjunction with Community Centre. Riparian planting to ensure stream ecological connectivity.
Duncan Park and Play Area			0.2023		Kapi Mana Bridge club Inc		Lot 1 DP 14719	577/138	Fee simple		Open Space B	Classify and vest as Recreation Reserve
Duncan Park and Play Area			0.2554				Lot 12 DP 15946	623/22	Fee simple		Open Space B	Classify and vest as Recreation Reserve
Duncan St Railway	Accessway	1793	1.606				Lot 1 DP 75425	42A/832	Fee simple		Open Space B	Classify and Vest as Recreation Reserve. Currently being developed as small BMX park.
Grasslees Bowling	Local Park	1860	0.5172		Tawa Bowling Club 29/6/22		Lot 1 DP 29788	6C/480	Recreation Reserve - Subject to the Reserves Act 1977 and Domains Act 1953 and Land Act 1948		Open Space A	
Grasslees Reserve	Community Park	1814	1.4555	Community			Pt Sec 284 & Sec 195 Porirua District	12C/702	Subject to the Land Act 1948		Open Space A	Classify and vest as Recreation Reserve. Upgrade required as a key community park. Riparian planting to ensure coherence with reserves continuum through the spine of Tawa
Grasslees Reserve		1790	0.3217				Sec 407 Porirua District	22A/572			Open Space A	Classify and Vest and as Recreation Reserve. Planting to ensure coherence with associated reserves
Kowhai Park and Play Area	Local Park	1799	0.5724	Local	Scouts Assoc, Linden 31/3/22; Tawa Community Theatre 29/6/22		Pt Lot 197 DP 9360	624/59	Fee simple - Held in Trust for Recreation Purposes.		Open Space A	Classify and Vest as Recreation Reserve. Decommission play area over time.

<b>Larsen Cres Reserve</b>	Ecological	2295	0.6519				Lot 1 DP 88116	55C/ 840	Fee simple	Conservation 5B	Open Space B	Classify and vest as Scenic Reserve. Continue weed and pest animal control
<b>Larsen Park and Play Area</b>	Local Park	1856	0.1381	Local			Lot 16 DP 27445	E3/346	Recreation Reserve		Open Space B	Decommission Play area
<b>Larsen Park and Play Area</b>			0.087				Lot 3 DP 25519	D3/305	Fee simple			Classify and vest as Recreation Reserve
<b>Leadley Lane Reserve</b>	Local Park	1916	0.1919				Lots 7-9 DP 26425	Gaz 1977 p955	Recreation Reserve - Subject to the Reserves Act 1977 and Domains Act 1953	Fee simple	Open Space B	
<b>Linden Park</b>	Sportsfield	1797	1.5009		Tawa Cricket Club, Tawa Hockey Club, Tawa Linden Wrestling and Sports Club	Toilets	Pt Sec 53 Porirua District	615/99	Sports ground	1954 p934	Open Space A	Classify and vest as Recreation Reserve
<b>Linden Park</b>			0.474				Lot 37 DP 18576	800/88	Recreation Reserve	1958 p967		
<b>Linden Park West</b>	Sportsfield	1817	0.1494				Pt Sec 142 Porirua District	B1/656	Fee simple		Outer Residential	Classify and vest as Recreation Reserve. Rezone as Open Space B
<b>Linden Park West</b>			0.987				Lot 10 DP 18238	31C/600	Recreation Reserve		Open Space A	
<b>Lyndhurst Park and Play Area</b>	Sportsfield	1804	0.5929	Local			Lot 3 DP 20555	802/74	Recreation Reserve		Open Space A	Prioritise replacement and upgrade of play equipment
<b>Lyndhurst Park and Play Area</b>	Sportsfield	1855	0.096		Tawa Rugby Football Club		Lot 1 DP41064	13A/1499	Recreation Reserve		Open Space A	
<b>Lyndhurst Park and Play Area</b>	Local Park	1805	0.1619				Pt Sec 161 Porirua District	14A/1235	Subject to the Reserves Act 1977	1959 p1633	Open Space B	Assess future use of this small area on the North side of Lyndhurst Road.
<b>Main Road- Porirua Stream</b>	Esplanade	2008	0.0158				Lot 3 DP 70329	9A/1353	Local Purpose Esplanade Reserve		Open Space B	
<b>Main Road Reserve</b>	Landscape and amenity	1808	0.1219				Lot 2 DP 15287	623/23	In trust for reserve purposes	1954 p1340	Open Space B	Classify and vest as Recreation Reserve. Vegetation management to provide coherence along the wider escarpment. Maintain mature exotic trees to provide some shading for small section of stream.
<b>Main Road West</b>	Landscape and amenity	1815	0.2198				Lot 48 DP 26425	D2/1377 cancelled	Recreation Reserve - Subject to the Reserves Act 1977		Open Space B	Prepare and implement vegetation plan to enhance ecological corridor function eg enhancement planting of non-invasive food sources to facilitate bird movement. This would be implemented alongside the removal of hazardous trees and plants that are a biodiversity threat.
<b>Main Road West</b>		1815	0.4075				Lot 50 DP 41183		Recreation Reserve - Subject to the Reserves Act 1977		Open Space B	
<b>Oriel Ave Reserve</b>	Ecological	1820	0.286				Lot 47 DP33779	11A/856	Recreation Reserve		Open Space B	Continue community revegetation site
<b>Oxford Street Reserve</b>	Esplanade	2131	0.0059				Lot 3 DP 80931	47B/985	Local purpose reserve-esplanade		Outer Residential	Riparian planting to provide ecological connectivity.
<b>Railway Land- Duncan Street</b>	Access	2091	0.375		Leased by WCC from NZ Rail for beautification purposes. The land forms an integral part of a primary green vein to the		Pt Lot 8 LO 31951		Beautification		Open Space B	Riparian restoration plan required. Priority to remove weed infestations that threaten lower reaches and to ensure stream shading.

					north.								
<b>Redwood Park</b>	Sportsfield	1854	0.1907		Tawa Squash Club Inc 29/6/22		Lot 1 DP 28061	F2/140	Recreation Reserve		Open Space B		
<b>Redwood Park</b>	Sportsfield	1807	1.1162		Redwood Pavillion Inc(Tawa Softball and Sports Club) 31/3/14		Lot 31 DP 25043	B3/1026	Recreation Reserve		Open Space B		
<b>Redwood Park</b>			3.0573				Lot 3 DP 20592	11D/343	Recreation Reserve				
<b>St. Annes Reserve</b>	Ecological	1798	0.9588	Local			Lot 2 DP 55689	27D/131	Recreation Reserve		Open Space B	Weed and pest animal control required.	
<b>Tawa Cemetery</b>	Cemetery	1816	0.0986				Pt Sec 52 Porirua District	352/277	Historic Cemetery		Outer Residential	Classify and vest as Recreation Reserve. Rezone as Open Space B. Some minor upgrading still required.	
<b>Tawa Depot/WEMO</b>	Local Park	1859					no listing				Outer Residential/ Suburban Centre	Develop walkway and cycleway link between the Depot Building and Porirua stream.	
<b>Tawa Stream/Oxford St Res</b>	Esplanade	1861	0.0036				Lot 3 DP 87293	54D/736	Local purpose reserve - esplanade		Outer Residential/ Suburban Centre	Riparian planting to provide ecological connectivity.	
<b>Tawa Stream/Oxford St Res</b>		1861	0.138				Lot 2 DP 66557	36C/292	Local purpose reserve - esplanade				
<b>Tawa Stream/Oxford St Res</b>		1861	0.0036				Lot 3 DP 82825	49C/215	Local purpose reserve - esplanade				
<b>Tawa Stream/Oxford St Res</b>		1861	0.082				Lot 5 DP 70008	41C/307	Local purpose reserve - esplanade				
<b>Tawa Stream/Oxford St Res</b>		1861	0.0064				Lot 4 DP 82706	49A/949	Local purpose reserve - esplanade				
<b>Tawa Stream/Oxford St Res</b>		1861	0.0035				Lot 3 DP88094	55C/886	Local purpose reserve - esplanade				
<b>Tawa Stream/Oxford St Res</b>		1861	0.0028				Lot 3 DP 76763	43A/404	Local purpose reserve - esplanade				
<b>Tawa Stream/Oxford St Res</b>		1861	0.116				Lot 4 DP 66557	36C/293	Local purpose reserve - esplanade				
<b>Tawa Stream/Oxford St Res</b>		1861	0.1015				Lot 2 DP 70008	41C/304	Local purpose reserve - esplanade				
<b>Tawa Stream/Oxford St Res</b>		1861	0.0167				Lots 5-6 DP 68979	36C Cancelled	Local purpose reserve - esplanade				
<b>Taylor Park and Play Area</b>	Sportsfield	1830	3.0591	local	1830a Tawa and Districts Highland Pipe Band Inc 31/3/53;Tawa Lyndhurst Tennis Club Inc.	Dog exercise area	Lot 103 DP 20176 & Lot 103 DP 20177	817/98			1958 p1241	Open Space B	Prioritise replacement of play equipment

					30/6/25;Wellington North Badminton Ass. N/A							
<b>Tui Park Play Area</b>	Local Park	1818	0.633	local	Wellington Region Free Kindergarten		Lot 103 DP 9069	624/58	In trust for recreation purposes	1954 p1340	Open Space A	
<b>Victory Cres Park &amp; Play Area</b>	Local Park	1832	0.2727	Local			Lot 124 DP 23912	7C/768	Recreation Reserve - Subject to the Reserves Act 1977 & Domains Act 1953	1966 p85	Open Space B	
<b>Victory Crescent</b>	Ecological	1812	0.5413				Lot 20-24 & 43 DP 26513	not listed	Subject to the Reserves Act	1970 p1960	Open Space B	Prepare and implement vegetation plan for enhancement of ecological corridor function eg enhancement planting of non-invasive food sources to facilitate bird movement (low priority)
<b>Victory Crescent</b>			0.0936				Lot 44 DP 26513	not listed	Subject to the Reserves Act	2000 P186 B654457.1	Open Space B	
<b>Wall Park and Play Area</b>	Local Park	1831	0.4552	Upgrade 1/2 court with new matting			Lot 26 DP 21093	B1/330	Recreation Reserve- Subject to the Reserves Act 1977 & Domains Act 1954	1960 p1015	Open Space A/Open Space B/Outer Residential	
<b>Wall Park and Play Area</b>	Local Park	1831	0.4552	Local		half court	Lot 26 DP 21093	B1/330	Recreation Reserve	1960 p1015	Open Space A/Open Space B/Outer Residential	Rezone as Open Space A
<b>Willowbank Reserve</b>	Community Park	1828	1.4361	Local			Pt Lot 1 DP 20867 & Lot 1 DP 29158	30A/741	Fee simple		Open Space A / Open Space B	Classify and vest as Recreation Reserve. Needs a major upgrade as part of the community parks upgrade project, including associated amenity weed control. Needs to recognise contribution to visual from the motorway and Middleton Road. Riparian weed control and planting, enhancement planting.
<b>Willowbank Reserve</b>			0.0078				Lot 87 DP 34328		Recreation reserve			
<b>Willowbank Reserve</b>			1.7831				Lot 80-81 DP 33022	6C/1335 cancelled			Open Space A	
<b>Woodman Drive</b>	Local Park	1836	0.7694				Lot 29 DP 46739	7C/999 cancelled	Subject to the Reserves Act and the Domains Act 1953		Open Space B	

## **8.2 Takapu Valley , Tawa east**

### **8.2.1 Description**

#### **8.2.1.1 Landscape**

The Takapu area is for the most part rural in character and existing reserves are minimal. Woodburn Drive Reserve at the bottom of Takapu Valley Road contributes to the environmental and visual quality of the valley entrance.

The Takapu Valley is characterised by an intimacy and containment at the bottom and a broadening out at the top. The narrow road and the predominance of pasture with scattered remnants of native scrub and groups of exotic trees, notably macrocarpa, with structures integrated into the landform, means that a strong rural character has been retained in spite of intensified settlement. Of particular relevance to the NRMP are the containing ridges and spurs above the valley, notably Takapu Ridge to the north-west and the Horokiwi Ridge to the south-east. Protecting the rural character of the more immediate valley is to some extent assured by the steepness and complexity of the valley sides, which constrain development, but the upper slopes and ridges are vulnerable to development that could adversely affect the character of the valley as well as the wider landscape of the NRMP area. Pine plantations are a significant feature on the higher faces and ridges and the future management of the areas they occupy will be important for the longer term quality and character of the landscape. The retention of steeper and riparian areas in native regrowth, already in evidence, is to be encouraged with the establishment of reserves should subdivision occur. Any development should be low density with well integrated structures.

#### **Reserves on the eastern side**

The reserves on the eastern side of Tawa are for the most part on steeper ground and scrub covered with indigenous regeneration beginning to assert its presence. In the case of Wilf Mexted Reserve this indigenous cover is well advanced. Although the reserves are scattered and of a limited area they never the less assume prominence in the visual landscape due to their location on steep faces. Seen in combination with vegetation along road reserves they provide contrast and definition to the landscape; they give emphasis to landform and break the built environment down into identifiable communities. Wilf Mexted Reserve and Reserves at the lower end of Takapu Road and above Woodman Drive are particularly important in providing identity and high quality visual amenity to their local communities

*Insert Map 10 Takapu, Tawa East Reserves*

### **8.2.1.2 Ecology**

This area is mostly the moderate to steep hill country and contorted gullies of Wellington's inland hill country. There are two ecologically significant reserves in this area that are important for their representation of Wellington's biodiversity, as well as the ecological connectivity of the area; Wilf Mexted Scenic Reserve, and Woodburn Drive Reserve. Both of these reserves contain examples of the area's original forest cover, with canopy species such as tawa, hinau and rewarewa. Other key forest remnants in this area are associated with steep gullies and occur on private land. These areas are important for ecological connectivity as important seed sources.

This area is a large part of the Porirua Stream headwaters, and landuse practices will impact on the water quality and stream health of Porirua Stream, which flows into Porirua Harbour.

## **8.2.2 Actions and Policies**

### **8.2.2.1 Landscape and ecology**

- Ensure that the road alignment and road reserve are managed to sustain the existing character of this rural corridor.
- Protect the open character of ridges, spurs, and steep slopes in any subdivision through the acquisition of reserves and the pursuit of covenants.
- Council will discuss with individual landowners, opportunities for a partnership approach in protecting native forest on private land for ecological connectivity in the Takapu Valley.
- Carry out indigenous riparian planting in Takapu Road Reserve.
- Extend pest control programme to include Woodburn Drive Reserve.
- Monitor indigenous forest health at Wilf Mexted and Woodburn Drive Reserve.

### **8.2.2.2 Recreation**

- Horse riding shall be permitted in Woodburn Drive
- Provide a new playground in Pikitanga Reserve.
- Decommission playground at Mahoe Reserve.
- Upgrade Raroa Park playground.

### **8.2.2.3 Tracks and Access**

- Work with the Friends of Tawa Bush Reserves to develop a track link between Wilf Mexted Reserve, Woodburn Reserve and into Willowbank Park.

Site Name	Park Type	WCC Site /map ref	Land Area Ha	Playground	Leases and Licences	Other facilities	Legal Description	CT Reference	Reserve Description	Gazette Reference	District Plan Zoning	Actions needed
Kilkelly Close Reserve	Esplanade	2377	0.255				Lot 1 DP 87309	52C/990	Recreation Reserve		Outer Residential	
Mahoe Park	Local Park	1806	0.1089	Local			Lot 8 DP16573	D1/154	Fee simple	1960 p380 #459335	Open Space B	Classify and Vest as Recreation Reserve. Decommission play area
Pikitanga Close	Ecological	2402	0.654				Lot 12 DP 90311	57D/361	Recreation Reserve		Open Space A	
Pikitanga Recreation Reserve	Local Park	2293	0.7275				Lot 1 DP 81513	48A/690	Recreation Reserve		Open Space B	Possible track linkages to new subdivision areas off Bing Lucas Drive. Site for new local playground.
Raroa Park	Local Park	1827	0.8099	Local			Lot 193 DP 14282	624/60	Recreation Reserve	1954 p1340	Open Space B	Prioritise replacement and upgrade of play equipment
Woodman Drive Extension	Ecological	2214	2.1425				Lot 1 DP 80235	47A/14	Subject to the Reserves Act		Open Space B	Monitor for new weed incursions. Leave to regenerate to indigenous bush. Ensure continuity in vegetation treatment with Woodman Drive reserve and the Road reserve along SH1
Woodman Drive Lookout	Lookout	2226	0.7458				Lot 1 DP 83612	49A/659	Recreation Reserve		Open Space B	As a significant visual feature needs vegetation enhancement.
Takapu Road Reserve	Ecological	2043	1.003				Lot 101 DP 79969	46D/333	Local Purpose Reserve (Esplanade)		Open Space B/rural	Riparian Planting.
Woodburn Drive Open Space		2044	0.0811				Lot 11 DP 88281	55B/539	Local Purpose Reserve(Utility)		Open space/Rural	Rezone as Open Space B
Woodburn Drive Reserve	Ecological	2497	15.2785				Lot 52 DP 302319				Rural	Rezone as Open Space B. Weed control a priority. Continue possum control. Monitor forest health. Enhance access from Woodburn Drive.
Wilf Mexted Scenic Res	Ecological	1837	2.342				Lot 10 DP 88281	55B/538	Scenic Reserve		Conservation 5c/Rural	Continue weed and pest animal control and monitor forest health. Possible track linkages to new subdivision areas off Bing Lucas Drive. Protect the integrity of the landscape in surrounding forestry areas

## **8.3 Churton Park, Stebbings, Glenside**

### **8.3.1 Description**

#### **8.3.1.1 Landscape**

These areas are diverse in character due to the very complex topography and drainage patterns. Housing development over the past 30 years has come to dominate the landscape so that the natural patterns of open space have been subjugated with a consequent loss of legibility and coherence. The Outer Green Belt, Marshall Ridge, Stebbings Stream, and the Porirua Stream do however provide a unifying landscape framework. Taken in combination with existing and proposed reserves this framework promises an evolving coherence in open space patterns with high amenity values for the communities contained within them. The existing and proposed reserves are central to this future coherence and environmental enhancement.

The Outer Green Belt provides a very strong sense of containment on the western side and the steep slopes falling down to Churton Park and Stebbings Valley are limiting for development. This continuum of open ridges and steep slopes continues down Marshall Ridge to a prominent spur falling steeply to Middleton Road and the Porirua Stream. Retaining this open space as predominantly natural with a minimum of structure will be important not only for the immediate area but for the whole of the northern reserves area.

Waterways draining to the Porirua Stream are deeply incised, forming natural barriers to development. With time these become valuable ribbons of open space and contribute to community identity and visual amenity. Stebbings Stream has the potential to become the defining feature in the identity of the valley community and its cohesion. With re-vegetation along the stream and up tributaries, linking remnants and re-clothing steeper slopes, a unique character will evolve. Virtually all of the future dwellings will have views down to Stebbings Stream and across to patterns of open space rising up onto ridge lines on the other side of the valley. This will provide high visual amenity as well as providing easy access to open space for walking/ cycling.

The existing reserves surrounding Churton Park and Glenside contribute valuable visual amenity to local communities and reserves such as Lakewood give emphasis to natural patterns within the built environment. Planting on steeper ground within reserves is being supplemented by planting along road reserves and on private properties so that natural patterns are being strengthened. John Walker and Edward Wilson Reserves provide valuable open space and relief from built structures as well as having value within the wider visual landscape. These reserves form a continuum of open space across Middleton Road to Wingfield Place Reserve and up to the motorway. Vegetation along the motorway corridor defines a strong 'edge' for Glenside, providing containment and a continuous pattern of open space.

*Insert Map11 Churton Park, Stebbings, Glenside Reserves*

Glenside Reserve is central to, and a defining feature of, the landscape framework for this group of suburbs. Glenside Reserve marks the beginning of a continuum of open space associated with Porirua Stream and Willowbank Reserve. It also provides a linkage from the bottom of Stebbings Stream and Marshall Ridge across Middleton Road and over the motorway to Mark Avenue and Seton Nossiter Parks. Glenside Reserve constitutes a substantial area of green open space which, taken in combination with associated areas of a similar character, has a very significant visual impact from surrounding areas. A 'rural character' has been sustained in spite of the intensity of development in surrounding areas. The concept plan provided aims to protect this rural character. In its advocacy for the enhancement of landscape and recreation values the Council will seek to strengthen linkages from Glenside Reserve across the motorway to Seton Nossiter, along the Porirua Stream to Willowbank, and south to Wingfield Place.

The Railway Line- Duncan Street and Rowells Road Reserves are part of a very significant corridor of open space along Middleton Road and Porirua Stream. There are some significant exotic trees through this area particularly around and south of Wingfield Place. This corridor has a strong rural character and structures are set well back from the road with buffers of vegetation. This corridor is an integral part of a wider expanse of open space associated with Marshall ridge and the faces on its eastern side where existing structures are scattered and absorbed within natural patterns of topography and vegetation. This open space is visually important in views from the motorway and the eastern side of the NRMP area, from Grenada and Grenada North in particular.

#### **8.3.1.2 Ecology**

This Area is characterised by the complex terrain of Wellington's inland hill country; including north/south slopes, broad damp basins and convoluted gullies and valleys. Original cover would have varied depending on the environment, but in general forests would have been dominated by tawa with emergent rimu and rata. Although this type of terrain and original cover is reasonably well represented elsewhere in the northern management area, remnants within the Churton Park, Stebbings, Glenside Area tend to be very small and isolated. Some of the most representative forest remnants of this area are under no form of protection at all. Connectivity is also a major issue for this area, and there are significant gaps in forest connectivity. Some of this connectivity can be improved through pest control and potentially enhancement planting of existing reserves. Other areas essential to connectivity are in private ownership and this management plan has an advocacy role in encouraging private landowners to protect these.

This Area is also a significant part of the Porirua Catchment, and much of the traditionally farmed area is currently under development. This is expected to have a strong impact on the Porirua Stream and this management plan advocates land use practices that protect streams, such as the retention of ephemeral streams and low impact urban design.

## **8.3.2 Actions and Policies**

### **8.3.2.1 Landscape and ecology**

- Ensure that the design and development of Glenside Reserve enhances its contribution to the wider coherence and connectedness of the landscape while enhancing the quality of the reserve and the recreation opportunities afforded. A preliminary concept for the reserve is provided with this plan.
- Seek to acquire a network of reserves in Stebbings Valley that enhances the quality and integrity of the stream, protects remnants of indigenous vegetation and, where possible, provides buffers and linkages across steeper slopes and down to Stebbings Stream.
- Provide future residents of Stebbings Valley with lists of plants used by Council in reserves and advocate for their use across steeper areas of their properties in order to enhance the character and coherence of their community.
- Work with the private landowner between Glenside Reserve and Wingfield Place Reserve to carry out riparian planting along Porirua Stream and investigate a future track link.
- Facilitate the enhancement of the Porirua stream and Middleton Road corridor with planting. This will involve advocating for the enhancement of the Rowells Road Reserve and ensuring that private development within the corridor is well integrated with appropriate planting.
- Engage with residents and community groups to promote planting and restoration that is sympathetic with council initiatives within reserves and the landscape objectives for the area generally.
- Protect the open space character of Marshalls Ridge and the steeper ridges and spurs falling to Stebbings Valley and Middleton Road through the provisions of this Plan and other mechanisms.
- Develop long term plans for Erlstoke Reserve and western reserves that link Churton Park with the Outer Green Belt to identify long term landscape management regimes. This to include fencing of bush remnants and long term grazing of open areas.
- Extend the pest control programme to include weed control at Handley Grove Reserve and part of Churton Park and Play Area.

### **8.3.2.2 Recreation**

- Identify a suitable site for a new community park in Upper Stebbings Valley as part of a future reserves Agreement.
- Identify suitable sites for a new dog exercise areas in Stebbings Valley
- Provide new playgrounds in Lower Stebbings (local), Amesbury Drive as part of the school development (Community) and Upper Stebbings (to be negotiated)
- Upgrade John Walker Park and Chorley Grove Play areas.
- Investigate the possible decommissioning of Burbank Crescent play area once John Walker Park has been upgraded.
- Develop an artificial sports surface in conjunction with the development of the new school for Churton Park, on Amesbury Drive.

### **8.3.2.3 Tracks and Access**

- Negotiate access from the reservoir in Stebbings Valley onto Ohariu Ridge and north to 944 Ohariu Valley Road and investigate a cross valley link from here to Marshall Ridge and down Stebbings Stream to Westchester Drive extension and Glenside.
- Develop a track link through Glenside Reserve as part of the redevelopment of the area.
- Investigate the establishment of a cross valley link between Glenside and Grenada Village via Mark Avenue Extension.
- Develop a link track between Lakewood Reserve and the proposed neighbourhood centre.
- Investigate a possible track link between Churton Park, Ohariu Valley Road and Old Coach Road.

### **8.3.2.4 Glenside Reserve and the Halfway House**

#### **Background and History**

Glenside Reserve is the main reserve in the Glenside area.

The reserve makes a significant contribution to both the visual landscape and the ecological health and resilience of the Porirua Stream. The reserve also affords an off road connection between the eastern and western sides of the valley, linking the Belmont Regional Park and the Outer Green Belt.

There are two main buildings on the reserve – the Halfway House and the caretaker’s house, both owned by Council.

### **Halfway House**

The Halfway House is listed in the District Plan as a heritage building with historic significance. The house is set in much of its original landscape, Glenside Reserve which adds to its authenticity.

The house has been vacant for many years and is in a poor state of repair. The landscape context of the building has been largely destroyed. The Glenside community is keen to see the building used for some community purpose and see it as an integral part of the Glenside Reserve. The Halfway House is central to the functioning of the most visible and active part of the reserve.

A condition survey carried out in March 2007 identified that it would cost in the order of \$220,000 to carry out basic upgrade work to bring the building to an average level. This does not include work to structural components such as . beams, columns, floor slabs, framing or non visual components e.g. wiring and pipes.

### **Caretakers House**

The caretakers house was built in 1965 for the custodian of Raroa Park. It is located on a knoll above Middleton Road with views over Glenside and the reserve. It has no heritage significance. Access to the house is by way of the shared access to the reserve and the Halfway House. It is currently occupied by a Council tenant.

### **Ecological Values**

The stream is a significant and potentially unifying feature of the site. Currently the stream banks are eroding and woody vegetation is minimal.

The weed infested faces above Middleton Road and Westchester Drive serve a useful function in ‘cleaning’ water running off the grazed paddocks and entering the stormwater system.

### **Landscape Values**

The reserve is a visually significant area of open space from virtually all perspectives; for immediate neighbours, for Glenside residents, for motorists on both the motorway and on Middleton Road, and for residents of Grenada and Churton Park who look down onto the reserve. The existing ‘rural’ character derives from the bold patterns of grass and woody vegetation. The reserve is clearly composed of a series of distinctive areas, defined over time by the practical needs, and limitations, of pastoral farming. The flat areas of the site have very limited amenity value; structures and fences are poorly maintained and the area has a generally unkempt appearance.

## **Recreational Values**

At present the site has little recreational value other than for horse riding. The Newlands, Paparangi Riding Society has a licence to use the reserve. Access is not immediately obvious and there are no facilities or features to attract recreational users.

The site has considerable potential for a diverse range of uses. There are a number of sheltered sunny areas within the reserve and there are a number of attractive views out from the site to the Outer Green Belt.

The objectives of the concept plan are:

- To protect and enhance the existing character and values of Glenside Reserve.
- To provide for more intensive use of defined areas of the reserve in the longer term.
- To exclude some key areas from intensive use so that vegetation can be restored.
- To provide for the long term conservation and use of the Halfway House.
- To provide an appropriate setting for the Halfway House

These objectives will be achieved through the following actions:

- The Newlands, Paparangi Horse Riding Society continue to use the reserve, with some areas fenced off for planting and restoration.
- Pasture on the flats and across gentle slopes will continue to be grazed.
- The riparian areas along the stream and around wet areas will be fenced and restored by planting suitable native species. A revegetation programme will be developed.
- In the medium term grazing will be excluded from steeper areas. These will be left to revert to indigenous vegetation. Substantial groups of exotic trees will be planted on the upper slopes of the eastern faces above the stream. Their purpose is to improve the landscape and visual character and to afford continuity in character along the corridor of State Highway 1. Restoration should, ideally, be extended along these slopes southwards into the adjacent property.
- All rubbish and redundant structures will be removed.

*Insert Figure 4 Glenside Reserve Concept Plan*

### **Walking/cycle tracks**

- Existing tracks will be rationalised and a connecting track developed to provide access from Middleton Road to Westchester Drive and the bridge crossing over the motorway to Seton Nossiter Park.
- In the medium term a track will be developed onto the steep hills below the motorway to this area, with seating and views across the reserve to the Outer Green Belt and Marshall Ridge.
- Existing fences will be upgraded or renewed.

### **Vehicle access**

- Provide for a car park in the longer term (possibly immediately beyond the Halfway House.)

### **Bridges/Fords**

- Assess the need for an upgrade of the existing ford and whether bridge access further up the stream is required.

### **Caretakers House**

- Retain the Caretakers House on site and investigate a long term use.

### **Halfway House**

The Halfway House provides a focal point for the reserve and could become the centre of neighbourhood activity in the reserve. As the building is now listed as a heritage building in the District Plan, the building will remain in its current location. While Council owns the building, it has no specified need for its future use. It is however supportive of a long term sustainable use and proposes to undertake the following process to facilitate this:

- Ownership to be retained by Council
- An expression of interest process to be undertaken to find a suitable long term sustainable use for the building.
- Identify the most appropriate reserve classification
- Essential maintenance and work to make the house safe to be carried out by Council.

Any use and lease of the house should ensure that it:

- Maximises the building's unique setting, character and layout while minimising the effects on the surrounding amenity values and building's heritage values.
- Is a viable, long-term use for the building.
- Has one or more 'public good' elements, namely; recreation, community/cultural, or education.

- Will 'actively' use the building, and is not a static activity such as a storage facility.
- Maximises the building's use both temporarily and spatially, i.e. not occupied or used for just a few hours a week, or limited to using just part of the lease area.

### **Halfway House gardens**

In the longer term the intention is to provide an improved setting for the building which may be achieved by re-creating a garden in keeping with the heritage and character of the Halfway House. In the interim a suitable area of open space around the building will be protected so that this opportunity is not foreclosed. Interpretation panels with historic photographs to show the earlier setting of the site will be erected so that its significance can be appreciated.

Site Name	Park Type	WCC Site#/Map ref	Land Area Ha	Playground	Leases and Licences	Other facilities	Legal Description	CT Reference	Reserve Description	Gazette Reference	District Plan Zoning	Actions needed
Amesbury Drive	Local Park	2359	0.7373				Lot 2 DP87935	55C/379	Recreation Reserve		Open Space A	Large flat area adjacent to Amesbury Drive. Being sold to Ministry of Education for integration into new school site. Need to ensure a local playground is constructed on this site for joint school/ community use.
Burbank Cres Play Area	Local Park	1344	0.2125	Local			Lot 1 DP 53495	26B/105	Recreation Reserve		Open Space A	Decommission play equipment once Edward Wilson has been upgraded.
Burbank Cres Play Area			0.2015				Lot 78 DP 63076	32D/708	Local Purpose(Accessway)			
Burbank Cres Play Area			0.0572				Lot 79 DP 63076	32D/709	Recreation Reserve			
4 Chippenham	Ecological											Part of reserves agreement to be vested. Fence forest remnants to exclude stock. Pest control and restoration for connectivity.
Chorley Grove	Local Park	1415	0.2054	Local			Lot 4 DP 42418	14C/267	Recreation Reserve		Open Space A	Assess need for and timing of replacement play equipment
Churton Park & Play Area	Community Park	540	0.0168	Community		Dog exercise area; toilets	Lot 76 DP 75451	41A/347	Recreation Reserve		Open Space A	Possible development of public toilets if they are not being built as part of the suburban redevelopment
Churton Park & Play Area			0.1202				Lot 1 DP 47752	19A/1277	Recreation Reserve		Outer residential	Rezone as Open Space A
Churton Park & Play Area			1.3108				Lot 1 DP 54252	24C/499	Recreation Reserve		Open Space A	
Churton Park & Play Area			0.3545				Lot 2 DP 50361	31A/766	Recreation Reserve		Open Space A	
Churton Park & Play Area			0.1005				Lot 32 DP 48397	19B/326	Recreation Reserve		Open Space A	
Churton Park & Play Area			0.0507				Lot 3 DP 73175	41C/497	Recreation Reserve		Open Space A	
Churton Park & Play Area			0.3462				Lot 63 DP 47229 & Lot 11 DP 45961	19B/302	Recreation Reserve		Open Space A	
Churton Park & Play Area			2.0504				Lot 2 DP 45634 & Lot 1 DP 49619	19D/766	Recreation Reserve		Open Space A	
Churton Park & Play Area	Community Park	1918	0.0884				Lot 83 DP 70306	31B/606 cancelled	Recreation Reserve		Open Space A	
Derry Hill	Local Park											Part of reserves agreement. To be vested.
Edward Wilson/John Walker Park	Local Park	1058	0.0152	Local		Dog exercise area	Lot 110 DP 28720	39C/271	Recreation Reserve		Open Space A	Assess need for and timing of replacement play equipment
Edward Wilson/John Walker Park			0.3068				Lot 15 DP 32865	39C/269	Recreation Reserve			
Edward Wilson/John Walker Park			1.1862				Lot 26 DP 27179	39C/270	Recreation Reserve			
Edward Wilson/John Walker Park			1.8286				Lot 1 DP 14848 & Pt Sec 18 Porirua District, also known as Pt A/2970 as shown on the CT	559/231	Recreation Reserve			
Edward Wilson/John Walker Park			0.3311				Lot 51 DP 31539	8B/558	Recreation Reserve			

<b>Glenside Reserve</b>	Local Park	1701	0.257			Pt Lot 29 DP 10905	41D/744 pt cancelled	Recreation Reserve	1994 p3516	Open Space B	Change classification of the Half Way House and immediate surrounds to Local Purpose Reserve (community building). The area for change of purpose should include enough area for car parking and address reserve access. Riparian planting, manage succession of gorse to indigenous bush in currently vegetated area. Implement Landscape Development Plan for development of reserve.
<b>Glenside Reserve</b>			13.6209		Newlands Paparangi Horse Riding Society Inc.	Sec 23 Porirua District, Lot 15 DP 10905 & Pt Closed Road SO 18617	574/135 pt cancelled	Recreation Reserve		Open Space B	
<b>Handley Grove Reserve</b>	Ecological	2537	0.8599			Lot 401 DP 311748	46395	Recreation Reserve		Open Space A	Weed control and enhancement planting for connectivity
<b>Lakewood Reserve</b>	Local Park	1628	0.1997		Churton Park Tennis and Recreational Club Inc 29/6/22	Lot 1 DP 76508	43B/101	Recreation Reserve		Open Space A	Future location of petanque court. Possible through route to new suburban centre.
<b>Lakewood Reserve</b>			3.3284			Lot 1 DP 49572	15A/85	Recreation Reserve		Open Space A	
<b>Lakewood Reserve</b>			0.2288			Lot 19 DP 63920	33D/740	Recreation Reserve		Open Space A	
<b>Lakewood Reserve</b>			0.4155			Lot 18 DP 74198		Recreation Reserve		Open Space A	
<b>Lakewood Reserve</b>			0.2404			Lot 4 DP 311793	46529	Recreation Reserve		Open Space A	
<b>Lakewood Reserve</b>			0.0077			Lot 18 DP 53873	33D/739	Recreation Reserve		Outer Residential	
<b>Lakewood Reserve</b>			0.0986			Lot 3 DP 53873	24A/953	Recreation Reserve		Open Space A	
<b>Railway Land- Duncan Street</b>	Access	2091	0.375		Leased by WCC from NZ Rail for beautification purposes. The land forms an integral part of a primary green vein to the north.	Pt Lot 8 LO 31951		Beautification		Open Space B	Riparian restoration plan required. Priority to remove weed infestations that threaten lower reaches and to ensure stream shading.
<b>Reserve Erlestoke</b>	Landscape and amenity	2506	0.5219			Lot 200 DP 314946	58953	Recreation Reserve		Open Space A	Assess area for track linkages and new farm fencing for future grazing.
<b>Rowells Road Reserve</b>	Ecological	2037	0.6388			Lot 2 DP 79549	46A/260	Local Purpose Reserve (Esplanade)		Open Space B	Continue current community riparian planting/weed control work.
<b>166 Westchester</b>	Ecological										Part of reserves agreement. To be vested. Continue revegetation and riparian restoration
<b>Wingfield Place</b>	Local Park, Landscape and Amenity	1397	0.2936			Lot 61 DP 53927	30D/256	Recreation Reserve		Open Space B	Consider creating track to provide linkage with Glenside Reserve.
<b>Wingfield Place</b>			0.2887			Lot 63 DP 53928	30D/257	Recreation Reserve		Open Space B	
<b>Wingfield Place</b>			0.6242			Lot 1 DP 53926	30D/255	Recreation Reserve		Open Space B	
<b>Wingfield Place</b>			2.8149			Lot 1 DP 51335	20C/1116	Recreation Reserve		Open Space A	

## **8.4 Grenada North, Paparangi, Newlands**

### **8.4.1 Description**

#### **8.4.1.1 Landscape**

The Grenada- Newlands area is in the process of development so that the landscape expresses an evolution from pastoral farming through to intensive urban subdivision. Within this matrix existing reserves reflect the full range of purposes and are at various stages of development, particularly in terms of their vegetation cover. Seton Nossiter Reserve has well established enclaves of advanced Indigenous vegetation while Carribbean Avenue Reserve is essentially in scrub weeds with indigenous plants asserting their presence on damper shaded faces. The patterns of open space are disjointed at present but there is the real prospect of long term coherence in the landscape with very high amenity values. The motorway road reserve and existing Council reserves above and below already provide a very coherent edge for the Grenada Newlands Area as well as affording quality visual amenity for immediate communities. Views across to Marshall Ridge and the Outer Green Belt are extremely important for all of the Grenada- Newlands Area.

The landform of the area is perhaps the least expressive of those dealt with in the NRMP. The skyline is less dramatic than on the western side so that the broad tops and upper slopes have already been substantially developed; housing density in the south is high while in the northern area of Horokiwi there are rural lifestyle blocks. As a result, structures dominate the skyline in the south and shelter belts have become a dominating feature in the north.

Tributaries of the Porirua Stream have sculptured the long slopes dropping down to the motorway, cutting ever deeper incisions as they fall. Steeper areas and 'terraces' run across the faces of spurs and back up into gullies. These are reverting through scrub weeds to native regrowth and promise to soften the impacts of the built environment.

The older and more mature reserves provide valuable cues to what the future for the landscape might be. For example, Seton Nossiter is a defining feature in the wider landscape providing valuable green open space and highlighting the landform. This ribbon of open space needs to be extended up Belmont Stream and onto higher ground to link into the extensive open space associated with Belmont Regional Park. Influencing the development of Lincolnshire Farm in ways to achieve this linkage, and to protect the integrity of associated spurs and ridges, will be critical to the longer term quality and integrity of the landscape for the whole of the NRMP area.

Grenada North Reserve provides buffering for the immediate communities with which it is associated and substantially enhances the significance of the open space corridor of SH1. The reserve contributes to the broad swathe of green open space running up to the Horokiwi Ridge and including Grenada

*Insert Map 12 Grenada North, Paparangi, Newlands Reserves*

North Park and Caribbean Avenue Reserve. This very significant area of open space promises to greatly enhance the quality and coherence of the landscape in the long term. The combined reserves make a major and positive contribution to the views from Tawa, and the motorway.

Henly Estate is an excellent example of what a small reserve can contribute to the landscapes integrity and visual amenity. This reserve, located on a southerly slope above the entrance to Newlands, greatly enhances the entrance to the suburb as well as containing the community of Eveshaw Place above and providing an attractive view for houses below. The reserve illustrates well the value of open space across steeper slopes when the vegetation is well managed and integrated into the built environment.

#### **8.4.1.2 Ecology**

This Area is characterised by the deep Belmont Gully, and moderate to steep north-aspect slopes leading up to the Horokiwi ridgeline. Original cover in the steep gully would have been forest dominated by moisture demanding species, such as kahikatea and tree ferns. Whilst this exact vegetation type is no longer found in the Gully, the large area under protection means that some representation of this type of forest cover is likely to return as long as pests are controlled. Seton Nossiter Park sits at the base of this gully and contains a remnant titoki-tawa forest on the valley floor. Pukatea are present alongside the stream and hinau, white maire, kaikomako, mahoe and rewarewa occur on the slopes. Most of the slopes are dominated by regenerating forest with mahoe, wineberry, rangiora and gorse.

The large Caribbean Drive Reserve also presents a unique opportunity, in that although there are no forest remnants occurring, there are well developed areas of kanuka/manuka shrubland. This type of shrubland is a transitional community from pastureland to forest and its occurrence is uncommon in Wellington. Again, a representation of the original type of forest cover and associated communities is likely in this area as long as pests are controlled. This reserve is also a potentially important area for forest connectivity.

As with Churton Park/Stebbing/Glenside Area, this area is also a significant part of the Porirua Catchment, and much of the traditionally farmed area is currently under development. This is expected to have a strong impact on the Porirua Stream and this management plan advocates land use practices that protect streams, such as the retention of ephemeral streams and low impact urban design.

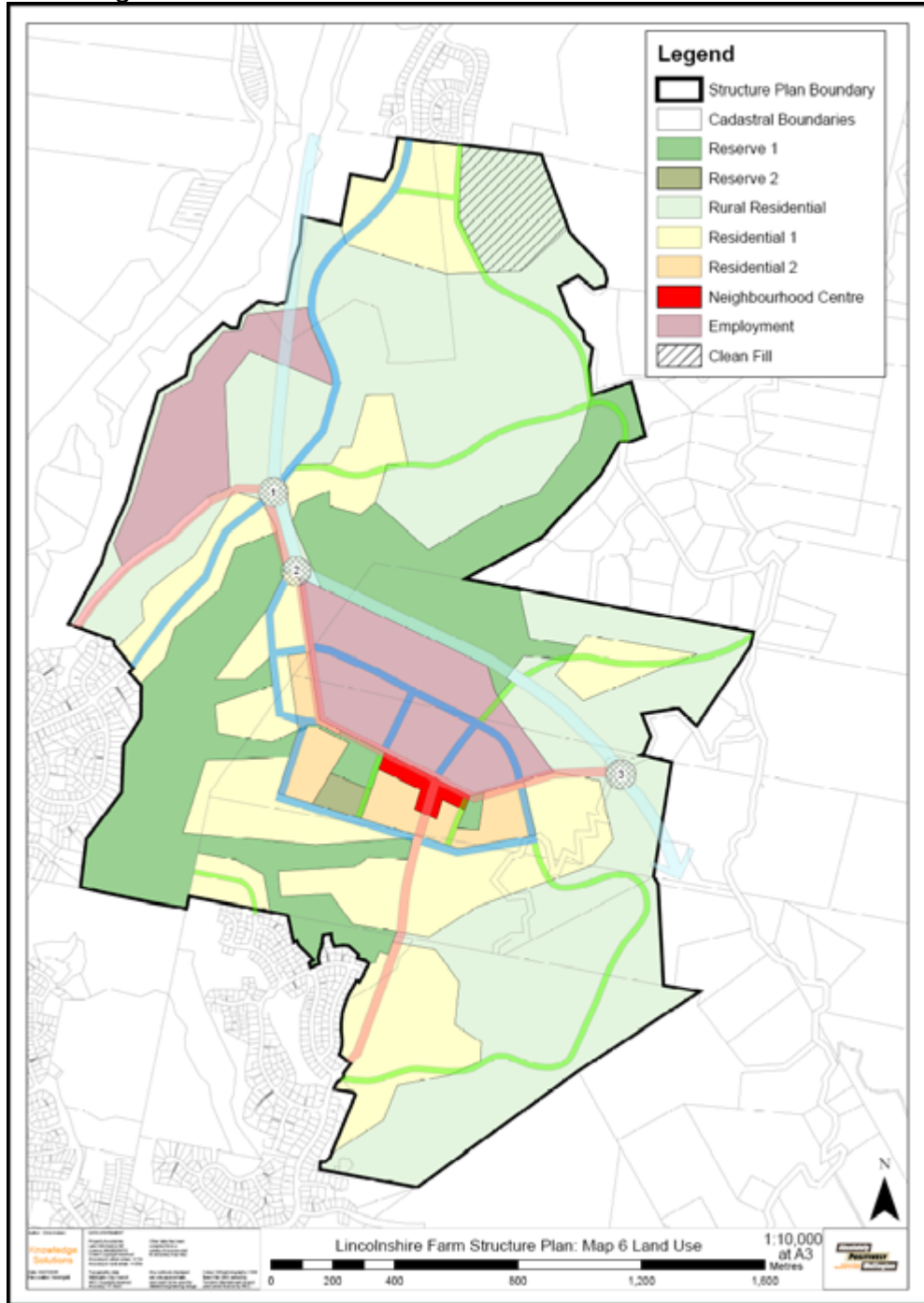
### **8.4.2 Actions and Policies**

#### **8.4.2.1 Landscape and ecology**

- Pursue the acquisition of reserves as outlined in the structure plan for Lincolnshire Farm (*Figure 5*) as part of a reserves agreement.

- Ensure that the open space values of ridges, spurs, steep slopes, and gullies across Lincolnshire Farm are adequately recognised and provided for, through the resource consenting process.
- Assess the future role and size of Grenada North reserve between Grenada North and the motorway to retain its role as a landscape buffer and to integrate it as part of the Lincolnshire Farms development.
- Endeavour to minimise the adverse effects of roading on the landscapes patterns and processes in all new development and ensure that road reserves are configured, and of an adequate width to provide for integration and amenity.
- Endeavour to protect steeper and visually prominent land for reserves where such land contributes to the coherence and amenity values of the landscape.
- Facilitate the establishment of covenants on private land where such land adds to the connectedness and coherence of the landscape and contributes to the substance and integrity of open space patterns.
- Develop, in consultation with the community and interest groups, a concept plan for the ex- Transpower land, Carribean Avenue Reserve.
- Undertake restoration planting at Seton Nossiter Park to ensure the health of forest remnant and enhance connectivity function.
- Extend current pest management programme to include weed control in Seton Nossiter Park and Henley Estate.
- Minimise the impact of new development on the health of the Porirua Stream through reserve acquisition where appropriate. Where reserve acquisition is not appropriate, advocate for stream protection through this plan and by other means.

Insert Figure 5 Lincolnshire Farms Structure Plan



#### **8.4.2.2 Recreation**

- Investigate the development of a Community Park in Newlands /Paparangi and how it will fit with the Newlands Suburban Centre redevelopment.
- Investigate the installation of an artificial surface for training at Newlands Park.
- Confirm the site for a new community park in Lincolnshire Farms as part of a future reserves Agreement.
- Identify a site for a future Dog Exercise Area in Lincolnshire Farms.
- Provide a new playground in Kentwood Drive (Local).
- Upgrade Cheyne Walk, Grenada North, Salford Street and Lynfield Lane Play Areas.
- Investigate the possible decommission of Burbank Crescent play area once Edward Wilson Reserve has been upgraded.
- Investigate future recreational options for Pinkerton Park and Jay Street Reserve.
- Investigate future options for the Community House reserve and its integration into the Newlands Mall redevelopment
- Investigate the feasibility of extending the sportsfields at Grenada North as part of the Lincolnshire Farms development.
- Upgrade Mark Avenue Park including construction of a pavilion and toilets.
- Investigate a partnership with Newlands schools for joint provision of sportsfields facilities.
- 

#### **8.4.2.3 Tracks and Access**

- Develop a track from Horokiwi to Seton Nossiter Park via Lincolnshire Farms and Belmont Gully.
- Investigate the development of a link between Horokiwi and Belmont Regional Park.

	Site Name	Park type	WCC Site#/Map Ref	Land Area Ha	Playground	Leases and licences	Other facilities	Legal Description	CT Reference	Reserve Description	Gazette Reference	District Plan Zoning	Actions needed
Newlands	Chapman Street	Local Park	969	0.0347				Pt Lot 108 DP 41187	21C/526	not identified		Outer Residential	
	Cheyne Walk Play Area	Local Park	531	0.1897	Local			Lot 1 DP 29170	32A/322	Recreation Reserve		Open Space A	Prioritise upgrade of play equipment
	Cheyne Walk Play Area			0.0111				Lot 103 DP 29170	5D/724	Recreation Reserve		Outer Residential	Rezone as Open Space A
	Glanmire Road Reserve	Amenity	1006	0.04				Lot 1 DP 50108	16A/513	Recreation Reserve		Outer Residential	Rezone as Open Space B
	Glanmire Road Reserve			0.0441				Lot 2 DP 50108	16A/514	Recreation Reserve	1996 p4478 B499586.1	Outer Residential	Rezone as Open Space B
	Glanmire Road Reserve			0.0854				Lot 4 DP 50108	16A/516	Recreation Reserve	1995 p4478 B495586.1	Outer Residential	Rezone as Open Space B
	Glanmire Road Reserve			0.0439				Lot 3 DP 50108	16A/515	Recreation Reserve	1995 p4478 B495586.1	Outer Residential	Rezone as Open Space B
	Henly Estate Reserve	Ecological	1251	0.2923				Lot 102 DP 46646	17C/41	Reserve for Public Enjoyment		Open Space B	Extremely high amenity value as entrance to Newlands and important for houses looking onto escarpment. Weed control high priority. Continue possum control. Investigate mustelid control. Consider management of adjacent land to improve biodiversity values of reserve.
	Henly Estate Reserve			0.9581				Lot 104 DP 46648	17C/43	Reserve for Public Enjoyment		Open Space B	
	Henly Estate Reserve			0.6901				Lot 105 DP 46649	17C/44	Reserve for Public Enjoyment		Open Space B	
	Henly Estate Reserve			0.5966				Lot 103 DP 46647	17C/42 pt cancelled	Reserve for Public Enjoyment		Open Space B	
	Lyndfield Lane Play Area	Local Park	496	1.4642	Local	Newlands Paparangi Tennis club		Lot 74 DP 14541	637/99	Recreation Reserve	1954 p956	Open Space A	Possible development of lookout area. Also part of a continuum of open space down to Ngauranga Gorge. Prioritise upgrade of play equipment.
	Newlands Mall Play Area		2313		Local			Carpark - McMillan Court				Suburban Centre	
	Newlands Park	Sports field	103	4.1032		Licence Agreement Newlands Fire Stn	Sportsfield and training field. Skatepark	Pt Sec 12 Porirua District, Pt Lot 1 DP 10372, Pt Lot 2 & 4 A/2370 and Pt Lot 3 A/1834	23A/127	Recreation Reserve		Open Space A	Assess possibility of upgrading this park to become a key Community Park in Newlands
	Pinkerton Park	Local Park	467	3.4727	Local			Lot 1 DP 15269	637/97	Recreation Reserve		Open Space A	Investigate future recreational options, including

													decommissioning play equipment
	<b>Pinkerton Park-Access</b>	Accessway	1178	0.0067				Lot 2 DP 42887	17D/1354	Recreation Reserve		Open Space A	
	<b>Salford Street Play Area</b>	Local Park	517	0.2223	Local			Lot 31 DP1658	777/6	Recreation Reserve	1989 p4479	Open Space A	Prioritise upgrade of play equipment
	<b>Spnmoor Street</b>	Local Park	506	0.3845		Scout Association Newlands	Dog exercise area	Lot 12 DP 16648	806/52	Recreation Reserve		Open Space A	
<b>Grenada North</b>	<b>Carribbean Avenue Reserve</b>	Local Park/Ecological	2204	79.123		TAG War games		Pt Sec 168 Porirua District and Pt Sec 41 Horokiwi Road District	34C/629	Recreation Reserve		Open Space A	Prepare landscape development plan. Continue pest animal (goats and possums) and weed control. Consider zones for conservation and exclude high impact recreation. Manage for connectivity and representativeness.
	<b>Grenada North Park &amp; Play Area</b>	Sportsfield	1956	15.0093	Local	Wgtn British Railway Modellers Club	Toilets, basketball court	Lot 2 DP 50139	38D/485	Recreation Reserve		Open Space A	Look at development of sportsfield area as part of sportsfield Asset Management Plan including vegetation management. Prioritise upgrade of play equipment.
	<b>Grenada North Reserve</b>	Landscape and Amenity	1179	7.1345				Lot 5 DP 54434	23C/210	Public Reserve		Open Space B	Low priority for ecological management due to highly disturbed and heavily fragmented nature of site. Requires Classification and Vesting as Recreation Reserve
	<b>Grenada North Reserve</b>			6.66				Lot 2 DP 64240	34C/627	Recreation Reserve		Open Space B	Assess future use of land as reserve. Look at possible integration with Lincolnshire farms development.
	<b>Grenada North Reserve</b>			0.0479				Lot 29 DP 43743	20B/984	Recreation Reserve	1995 p2438	Open Space B	
<b>Horokiwi</b>	<b>Hillcroft Road</b>	Ecological	690	12.5197				Lot 1 DP 53628	24C/402	Recreation Reserve		Open Space B	Continue to fence to exclude stock access from regenerating areas. Revegetate as required and manage to retain stream values. Explore link from Horokiwi to Seton Nossiter Park via Lincolnshire Farms and Belmont Gully.
	<b>Hillcroft Road</b>			1.4875				Lot 33 DP 52287	22C/709	Recreation Reserve		Open Space B	
	<b>Hillcroft Road</b>			1.4274				Lot 32 DP 52285	22C/708	Recreation Reserve		Open Space B	
	<b>Hillcroft Road</b>			3.0883				Lot 3 DP 53467	24C/404	Recreation Reserve		Open Space B	
	<b>Hillcroft Road</b>			1.8436				Lot 2 DP 53630	24C/403	Recreation Reserve		Open Space B	

	Hillcroft Road			1.6512				Lot 30 DP 52382	22C/707	Recreation Reserve		Open Space B	
	Hillcroft Road			11.3826				Lot 4 DP 54434	27B/439	Recreation Reserve		Open Space B	
	Reserve- Kentwood Drive	Local Park	2569	2.6754				Lot 441 DP 352897	216702	Recreation Reserve		Outer Residential	Officially name the reserve. Riparian planting. Site for new local playground
	Woodridge Reserve	Local park	2349	2.2677				Lot 2 DP 84214	51B/932	Recreation Reserve		Open Space B	Complete track link from Fernwood Court to Colchester Street. Weed and possum control required in association with Seton Nossiter Park
Paparangi	Jay Street Play Area	Local Park	1189	0.4001				Lot 7 DP 28942	39C/273	Recreation Reserve		Open Space A	Assess future use of land as reserve.
	Lynda Ave Reserve	Local Park	1925	0.1087				Lot 3 DP 26368	14B/1362 cancelled	Recreation Reserve	1989 p4482	Open Space A	
	Lynda Ave Reserve			0.1047				Lot 2 DP 26368	14B/1102	Recreation Reserve	1989 p4482	Open Space A	
	Rec Reserve - Ring Lane	Local Park	2353	0.1116				Lot 32 DP 86292	54A/122	Recreation Reserve		Outer Residential	
	Seton Nossiter Park	Ecological	1406	0.6876				Lot 1 DP 45711	22C/704	Recreation Reserve		Open Space B	Weed control required for ecological enhancement. Continue possum control. Riparian planting required. Explore link to Horokiwi via Lincolnshire Farms and Belmont Gully.
	Seton Nossiter Park			0.6878				Lot 1 DP 91023	58D/92	Recreation Reserve			Need to review whether Recreation Reserve is most appropriate classification
	Seton Nossiter Park			5.9113				Lot 1 DP 49172	Held by gaz notice	Recreation Reserve			Need to review whether Recreation Reserve is most appropriate classification
	Seton Nossiter Park			3.5827		Scout Assoc Paparangi		Sec 386 Porirua District	22D/690	Recreation Reserve			Need to review whether Recreation Reserve is most appropriate classification. Reclassify are around Scout Hall as Local Purpose Reserve.
	Seton Nossiter Park			4.6826				Lot 1 DP 48271	22C/706	Recreation Reserve			Need to review whether Recreation Reserve is most appropriate classification
	Seton Nossiter Park			0.7863				Lot 1 DP 56054	25D/379	Recreation Reserve			Need to review whether Recreation Reserve is most appropriate classification
	Seton Nossiter Park			13.6241				Pt Sec 23 Paparangi Settlement	25A/930	Recreation Reserve			Needs to be Classified and Vested as Recreation Reserve

	<b>Seton Nossiter Park</b>			0.4176				Lot 1 DP 54334	23B/819	Recreation Reserve			Needs to be Classified and Vested as Recreation Reserve
	<b>William Hardgrave Reserve</b>	Local Park	525	0.432				Lot 17 DP 33955	39C/272	Recreation Reserve		Open Space A	
<b>Grenada Village</b>	<b>Accessway to Grenada Community Centre</b>	Accessway	1244	0.0234				Lot 2 DP 46826	22C/705	Local Purpose Reserve (Accessway)		Outer Residential	
	<b>Grenada Village Play Area</b>	Local Park	1243	0.062	Local			Lot 229 DP 46827	17C/753	Public Reserve		Open Space A	Classify and vest as Recreation Reserve
	<b>Mark Avenue Park</b>	Sportsfield	1899	3.6532				Lot 1 DP 47009	33D/583	Recreation Reserve		Open Space A	Requires classification and vesting as Recreation Reserve. Upgrade toilets and pavilion.
	<b>Reserve</b>	<b>reservoir</b>	<b>2533</b>	<b>1668</b>	<b>Reservoir</b>			<b>Lot 1 DP 88853</b>	<b>WN56B/867</b>	<b>Local purpose(Reservoir) Reserve</b>		<b>Rural</b>	

## **8.5 Johnsonville**

### **8.5.1 Description**

#### **8.5.1.1 Landscape**

The Johnsonville community derives high levels of containment and amenity from the dominance of the Outer Green Belt and associated reserves such as Totara Park. Within the built environment vegetation along road reserves and across steeper private land lend amenity and coherence, providing containment within communities and adding positively to the driving and walking experience. Ohariu Road Reserve provides a good example of the way in which small area of green open space can contribute to the amenity of the wider area. The treatment of the boundaries of reserves such as Alex Moore Park and Raroa Reserve are important for similar reasons.

For Johnsonville residents views across to Newlands are important so that the treatment of reserves and the sensitive management of the landscape generally will be of importance to them. The eastern skyline is particularly prominent and development occurring at the top of Ngauranga Gorge is prominent for a number of residents in Johnsonville.

Land available for new development within Johnsonville is generally limited to slopes below the Outer Green Belt. As this area is very prominent for Johnsonville residents it will be important for the council to ensure that roads and structures are well integrated and that indigenous regrowth is retained and restored where ever possible.

#### **8.5.1.2 Ecology**

Although the area is now heavily residential, it would have once been characterised by podocarp/broadleaved forest, with giant trees such as tawa, rimu and rata. There are no remaining areas that are representative of this original cover, and indeed few reserves with indigenous forest cover at all. The most significant reserve with indigenous cover is Totara Park and this area is therefore a priority for pest animal and weed control. Johnsonville Park in the Outer Green Belt is key to maintaining the ecological connectivity in this Area.

### **8.5.2 Actions and Policies**

#### **8.5.2.1 Landscape and ecology**

- Ensure that any new development along the western side is well integrated into the lower slopes of the Outer Green Belt and involves minimal earthworks and site excavation.

*Insert Map 13 Johnsonville Reserves*

- Ensure that road reserves are of a sufficient width to enable planting and screening to minimise the impacts of structures.
- Acquire reserves along the lower slopes of the Outer Green Belt when opportunities arise to extend areas of protected open space down into the community.
- Facilitate the covenanting of steeper land across private properties in order to extend patterns of indigenous species and enhance the coherence of open space.
- Ensure that indigenous plants naturally occurring in the Outer Green Belt are well represented in plantings through all parks and reserves within Johnsonville. (And possibly schools.)
- Actively engage with the community to invite input to parks management and restoration initiatives and to ensure that council activities are aligned with residents' landscape and amenity expectations.
- Extend pest control programme to include animal pest and weed control in Totara Park.
- Monitor forest health and resilience in Totara Park.

#### **8.5.2.2 Recreation**

- Prepare a master plan for Johnsonville Memorial Park and Alex Moore Park and investigate the opportunities to maximise their respective and complementary facilities.
- Upgrade Kipling Street, Branscombe Street, and Gilbert Young Play Areas.
- Decommission Meekwood Reserve Play Area once Branscombe has been upgraded.
- Facilitate the amalgamation of Johnsonville Softball Club, North Wellington Junior Football Club, North Wellington Association Football Club and Johnsonville Cricket Club into a custom built facility on Alex Moore Park.
- Investigate a partnership with Johnsonville schools for joint provision of sportsfields facilities.

Site Name	Park Type	WCC Site #/Map ref	Land Area Ha	Playground	Leases and Licences	Other facilities	Legal Description	CT Reference	Reserve Description	Gazette Reference	District Plan Zoning	Actions needed
Alex Moore Park	Sportsfield	495	0.0633		Johnsonville Cricket Club; Olympic Harriers	Toilets	Lot 34 DP2200	377/216	Recreation Reserve	1989 p4483 B041011.1	Open Space A	Prepare a master plan for Johnsonville Memorial Park and Alex Moore Park and assess the synergies between them. Work with key sportsclubs (Cricket, football and softball) to investigate the possibility of amalgamation in a new building on the Park
Alex Moore Park			0.0645				Lot 32 DP 2200	184/140 cancelled	Recreation Reserve	1989 p4483 B041011.1	Open Space A	
Alex Moore Park			0.0819				Lot 18 DP 2107	507/94	Recreation Reserve	1989 p4483 B041011.1	Open Space A	
Alex Moore Park			0.0572				Lot 31 DP 2200	819/7	Recreation Reserve		Open Space A	
Alex Moore Park			1.841				Lot 12 DP 15451	42D/753	Recreation Reserve	1989 p5763 B336664.1 1994 p917	Open Space A	
Branscombe St Play Area	Local Park	671	0.2079	Local			Lot 4 DP 31307	37B/721	Recreation Reserve		Open Space A	Prioritise upgrade of play equipment
Ceres Crescent	Local Park	1618	0.0668				Lot 12 DP 32195	9B/546	Recreation Reserve		Open Space A	
Ceres Crescent			0.0908				Lot 13 DP 32195	9B/547	Recreation Reserve		Open Space A	
Ceres Crescent			0.0569				Lot 11 DP 32195	9B/545	Recreation Reserve		Open Space A	
Gilbert Young Play Area	Local Park	510	0.41	Local			Lot 4 DP 1716	521/236 cancelled	Recreation Reserve	1989 p4483	Open Space A	Prioritise upgrade of play equipment. Planting to add to amenity of community.
Helston Park and Play Area	Sportsfield	535	0.0665	Community	Johnsonville Rugby Football Club	toilets	Lot 1 DP 49298	19D/1441	Recreation Reserve	1995 p4478	Open Space A	
Helston Park and Play Area			0.1278				Sec 56 Paparangi Settlement	20D/711	Recreation Reserve	1998 p68	Open Space A	
Helston Park and Play Area			3.4				Lot 1 DP 74009	41C/20	Recreation Reserve		Open Space A	
Johnsonville Memorial Park	Community Park	1604	0.5489				Lot 36 & 42-45 DP 242	34/224	Recreation Reserve		Open SpaceA	Prepare a master plan for Johnsonville Memorial Park and Alex Moore Park and assess the synergies between them
Johnsonville Memorial Park	Community Park	493	0.5489	Community	Johnsonville Lawn Tennis		Lot 36 & 42-45 DP242	34/224	Recreation Reserve	1946 p278	Open SpaceA	
Johnsonville Memorial Park			0.1012				Lot 46 DP 242	156/161 cancelled	Recreation Reserve	1975 p1138 070379.1		
Johnsonville Memorial Park	Community land - 2 Wanaka street	162	0.0506			Basketball half court	Lot 2 DP 12417	490/15 cancelled	Recreation Reserve	1978 253632.1	Outer Residential	Temporary park. Likely to be used as part of the extension of Keith Spry Pool. Need to assess if change of reserve classification is required.
Johnsonville Memorial Park	Community Park	166	0.1012				Lot 46 DP 242	156/161 cancelled	Social Welfare Services	1975 p1138 070379.1	Open Space A	Will require work under the Public Works Act to become reserve. Housing just now.
Johnsonville Railway St	Access	1771	0.0858				Railway Land - Moorfield Road also known as Pt Lot 3 DP 12800 as shown on the CT	25A/421	Railway		Suburban Centre	
Kipling Street Play Area	Local Park	502	5.929	Local	Girl Guides Jville; Kindergarten		Lot 53 DP 18689	39C/274	Recreation Reserve	2006 6764032.2	Open Space A	Prioritise upgrade of play equipment

<b>Meekwood Reserve</b>	Local Park	528	1.6049	Local		Dog exercise area	Lot 1 DP 42727	33C/655	Recreation Reserve	1989 B040428	Outer Residential	Prioritise upgrade of play equipment
<b>Ohariu Road Reserve</b>	Ecological and Access	85	0.4009		Scouting		Sec 20 Blk VI Hawtrey Settlement	8B/1012	Recreation Reserve	1989 p4483 B041011.1	Open Space A	This area of bush contributes to a continuum and therefore provides landscape coherence. Forest and riparian restoration for connectivity
<b>Old Coach Road Reserve</b>	Isolation strip	2500	0.0007				Lot 3 DP 313848	54742	Local Purpose - Isolation strip		Outer Residential	
<b>Raroa Park</b>	Sportsfield	1065	0.0475				Pt Sec 324 Porirua District	27D/107	Recreation Reserve		Open Space A	Need to classify and vest as recreation reserve
<b>Raroa Park</b>			2.2366				Sec 211, Pt Sec 217-218 & Sec 368- 369 Porirua District	23C/916	Recreation Reserve			
<b>Raroa Park</b>			0.02				Pt Sec 6 Porirua District	20B/768	1989 p4482			Need to classify and vest as recreation reserve
<b>Recreation Reserve</b>	Ecological	2358	0.2782				Lot 13 DP 81822	48B/626	Local Purpose - Recreation Reserve		Outer Residential	Consider management of adjacent land to improve biodiversity values of reserve and to connect with Henley Estate Reserve
<b>Sedgley Grove Reserve</b>	Ecological	2591	0.3116				Lot 1 DP 360298	245139	Subject to the Reserves Act		Outer Residential	Weed control (low priority)
<b>Tarawera Road Reserve</b>	Local Park	579	0.0513				Lot 13 BLK VII DP 2442	558/270	Recreation Reserve		Open Space A	
<b>Totara Park</b>	Ecological	501	0.0331				Lot 8 DP 32538	26B/352	Recreation Reserve		Open Space B	Weed and possum control a priority required for ecological representativeness and connectivity. Monitor forest health
<b>Totara Park</b>			1.574				Lot 21 DP 74702	44A/297	Scenic Reserve		Open Space B	
<b>Totara Park</b>			0.0109				Lot 21 DP33932	22B/684	Accessway		Outer Residential	Rezone as Open Space B
<b>Totara Park</b>			6.902				Lot 19 DP 33932	22B/683	Recreation Reserve		Open Space B	
<b>Tralee Place Reserve</b>	Local Park	676	0.062				Lot 31 DP 49217	19C/720	Recreation Reserve		Open SpaceA	
<b>Westpark Reserve</b>	Ecological	639	0.0094				Lot 5 DP 50442	20D/568	Recreation Reserve	1984 p3701	Open Space B	Manage as part of Johnsonville Park

## **8.6 Harbour Escarpment**

### **8.6.1 Description**

#### **8.6.1.1 Landscape**

Most of the landscape of the Harbour Escarpment is steep and covered in indigenous forest and scrub. Built areas have been constrained by the topography and the last available area of any significance is above Ngauranga Gorge, and this is currently being developed. The escarpment is prominent from the harbour and from the eastern suburbs of the city, notably Mount Victoria. Although the built environment across the upper slopes of the escarpment and along significant sections of the skyline covers a considerable area, the scale of the escarpment and the extent of green open space is sufficient to absorb this; the naturalness of the steep lower slopes, the coastal edge, and the sea mean that a natural character predominates.

Sustaining the existing character of the Harbour Escarpment and securing its protection is important for the whole city. Although most of the land is too steep for development there are still significant threats to the character and integrity of the escarpment landscape. An intensification of development along ridges and spurs with ongoing encroachment down onto the steeper faces of the escarpment could see the loss of natural character and a shift towards a preponderance of structure.

Brandons Rock Reserve has a similar significance to Henly Estate in recognising an important landscape feature and giving it emphasis.

#### **8.6.1.2 Ecology**

This area is largely characterised by the steep coastal escarpment. This escarpment is well vegetated and a number of areas represent the wind-shorn coastal forest that would have originally occurred there. Council currently owns small parts of these areas such as Gilberts Bush and Brandons Rock but they have however been largely protected by the steep nature of the escarpment.

### **8.6.2 Actions**

#### **8.6.2.1 Landscape and ecology**

- Council will seek to acquire key areas along the escarpment with high landscape and/or ecological values through reserves agreements
- Develop, in consultation with local communities, a detailed Landscape Development Plan for Brandons Rock Reserve.

*Insert Map 14 Ngauranga Escarpment*

- Monitor forest health and resilience at Dungarven Reserves, Tamworth Crescent Reserve and Gilberts Bush.

### **8.6.2.2 Recreation**

- Prepare a plan for the development of a dog exercise park at Waihinahina Park– in memory of Dennis Duggan.
- Upgrade Brandon’s Rock (Edgecombe Street) Play Area,

### **8.6.2.3 Access**

- Complete the Harbour Escarpment walkway from Waihinahina Park – in memory of Dennis Duggan to Ngauranga.

Site Name	Park Type	WCC Site number/ Map ref	Land Area Ha	Playground	Leases and Licences	Other facilities	Legal Description	CT Reference	Reserve Description	Gazette Reference	District Plan Zoning	Actions needed
Brandons Rock Access	Accessway	2375	0.1335			Access from Brandons Rock to Glanmire Road	Lot 23 DP 89499	56D/645	Recreation Reserve		Open Space B	Rezone all as Open Space B
Brandons Rock Access	Accessway	2374	0.3677				Lot 23 DP 89611	56D/813	Subject to the Reserves Act 1977		Open Space B	
Brandons Rock/Edgecombe Street Play Area	Local Park	637	0.1962	Local		Key track links currently being established as part of Escarpment Track.	Lot 75-76 DP 40063	24A/293	Recreation Reserve and Community Development	1982 p2849 1995 p2438	Open Space B	Prioritise upgrade of play equipment. Prepare landscape concept plan.
Brandons Rock/Edgecombe Street Play Area			0.3113				Lot 72 DP 40063	11D/438	Recreation Reserve			
Gilberds Bush	Ecological	687	2.1005				Lot 1 DP 58085	32C/828	Recreation Reserve		Conservation 5H	Continue ongoing weed and pest animal management. Monitor forest health.
Gilberds Bush			8.052				Pt Lot 1 DP 34856	32A/476	Recreation Reserve		Conservation 5H	
Gilberds Bush			4.866				Lot 1 DP 74154	39C/530 cancelled	Recreation Reserve		Conservation 5H	
Gilberds Bush			0.4275				Lot 12 DP 45301	32C/827	Recreation Reserve		Conservation 5H	
Glanmire Road Reserve	Isolation strip	2372	0.002				Lot 26 DP 89611	56D/8114	Subject to the Reserves Act 1977		Road	
Glanmire Road Reserve			0.0019				Lot 22 DP 89611	56D/812	Subject to the Reserves Act 1977			Consider linking with adjacent areas to enhance biodiversity value and aid future management
Miles Cres Reserve	Ecological	1738	9.78				Lot 3 DP 63927	32C/312	Subject to the Reserves Act 1977		Open Space B	Classify and vest as Scenic Reserve. Open the public access to the reserve off Miles Crescent. Keep goat free. Name the reserve officially. Weed control (low priority)
Reserve Belmont -GW	Ecological	1774	3.1353				Lot 7 DP 49151	26B/975	Recreation Reserve		Open Space B	Continue ongoing weed and pest animal management
Reserve Belmont -GW			105.9142				Pt Sec 14-16 & 20 Horokiwi Road District	19B/69	Recreation Reserve		Open Space B	
Reserve- Dungarven Road	Ecological	2376	0.339				Lot 20 DP 89814	56D/931	Recreation Reserve		Open Space B	Continue possum control. Monitor forest health.
Reserve- Dungarven Road	Ecological	2373	1.708			Bush Covered hillside and access to bottom of Dungarven road	Lot 19 DP 89841	56D/930	Recreation Reserve		Open Space B	Continue possum control. Monitor forest health.
Waihinahina - In Memory of Dennis Duggan	Local Park	1085	44.232			Dog exercise area	Lot 2 DP 303502	14039			Conservation 5H /Outer Residential	This is not recreation reserve - requires classification. Protect forest areas. Continue possum control. Investigate the establishment of a dog exercise park.
Tamworth Crescent Reserve	Bush	3132	0.6027				Lot 68 DP 340021	164452	Recreation Reserve		Open Space B/Outer residential	Monitor forest health.

## 9 Implementation Plan

This implementation plan lists the key actions over the next five years identified in *Section 8*. Timing shown indicates priorities for action but may vary subject to funding availability. New projects will be dependent on funding. Projects subject to reserves agreements are dependant on negotiations and cannot be implemented until reserves agreements are in place.

Potential funding sources are identified for each action. Available funding will be directed to the highest priority areas. Any new funding will be requested through the Annual Plan new initiative process. The Charles Plimmer Bequest funding is subject to final approval by Council, and the implementation actions in this management plan will be assessed alongside other projects citywide for future funding.

### IMPLEMENTATION PLAN OF KEY ACTIONS

	08/09	09/10	10/11	11/12	12/13	Funding Source
<b>General</b>						
Classify and vest all reserves		✓	✓	✓	✓	Existing funds C429
Identify all encroachments and develop a timetable for resolution			✓			Existing funds C524
<b>Tawa</b>						
Plan and implement upgrade of Grasslees Reserve.		✓				Subject to a decision on future Charles Plimmer Bequest Funding
Plan and implement upgrade of Willowbank Reserve					✓	Subject to a decision on future Charles Plimmer Bequest Funding
Investigate future recreation options for Arthur Carmen Park	✓					Existing budgets A004
Investigate future options for the small		✓				Existing budgets A004

area of Lyndhurst Park (site 1805)						
Decommission Playgrounds						
Kowhai Park (over time)						Existing budgets C559
Larsen Park				✓		Existing budgets C559
Upgrade Playgrounds						
Coronation Park					Upgrade scheduled for years 6-10	Existing budgets CX181
Lyndhurst Reserve				✓		Existing budgets CX181
Facilitate the establishment of the Porirua Stream Walkway and Cycleway with the Tawa community.	✓	✓	✓	✓	✓	Existing funds for planning. External funds and/or new initiative funding required for completion
Work with the owner of the lands between Redwood Bush, Tawa Reserves and the Outer Green Belt to negotiate access for walking and cycling as part of the subdivision of Upper Stebbings Valley.						Future Reserves Agreement condition
Prepare and implement vegetation plan for Charles Duncan Reserve to enhance amenity values			✓			Existing funding A004
Prepare and implement vegetation plan for Main Rd West Reserve and Victory Crescent Reserve to enhance ecological corridor function, remove hazardous trees and weeds and provide coherence along wider escarpment		✓				Existing funding C524
Continue weed and pest animal control at Larsen Cres	✓	✓	✓	✓	✓	Existing funding C509/510
Extend pest control programme to include:						
St Annes Reserve -	✓	✓	✓	✓	✓	Existing

weed control						funding C510
Charles Duncan Reserve - possum control	✓	✓	✓	✓	✓	Existing funding C509
Riparian restoration plan required for Railway Land - Duncan St		✓				
Undertake riparian planting:						
Duncan Park			✓	✓	✓	Existing funding C514
Grasslees Reserve		✓	✓	✓		Existing funding C514
Oxford Street Reserve			✓	✓	✓	Existing funding C514
Willowbank Reserve				✓	✓	Existing funding C514
<b>Takapu/Tawa East</b>	<b>08/09</b>	<b>09/10</b>	<b>10/11</b>	<b>11/12</b>	<b>12/13</b>	<b>Funding Source</b>
Work with the Friends of Tawa Bush to develop a track link between Wilf Mexted Reserve, Woodburn Reserve and into Willowbank Park.			✓	✓	✓	Existing funds for planning. External funds and/or new initiative funding required for completion
Enhance access from Woodburn Drive to Woodburn Drive Reserve					Years 6-10	Existing funding CX437
Decommission Playgrounds						
Mahoe Reserve	✓					Existing budgets C559
Upgrade Playgrounds						
Raroa Park	✓					Existing budget CX181
Provide a new playground in Pikitanga Reserve					Time to be scheduled	Existing budget CX181
Investigate track linkages from Pikitanga to new subdivision off Bing Lucas Drive		✓				Existing funding CX437
Extend weed control programme to include Woodburn Reserve	✓	✓	✓	✓	✓	Existing funding C509
Continue pest control Wilf Mexted Reserve	✓	✓	✓	✓	✓	Existing funding C510
Undertake riparian						

planting						
Takapu Reserve		✓	✓	✓	✓	Existing funding C514
Monitor forest health						
Wilf Mexted Reserve		✓	✓	✓	✓	Existing funding A004
Woodburn Drive Reserve		✓	✓	✓	✓	Existing funding A004
<b>Churton Park, Stebbings, Glenside</b>	<b>08/09</b>	<b>09/10</b>	<b>10/11</b>	<b>11/12</b>	<b>12/13</b>	<b>Funding Source</b>
Prepare and commence implementation of the Landscape Development Plan for Glenside Reserve and Halfway House:		✓	✓	✓		Some existing funding is available for basic maintenance works. However new initiative and/or external funding will be required for major upgrade of the house and reserve.
Remove redundant structures and rubbish.	✓					see above
Implement a programme of weed and pest control.			✓	✓	✓	see above
Repair or replace existing fences.		✓	✓			see above
Develop an upgraded walkway access suitable for horses and recreational users to follow the existing alignment and extend out onto Westchester Drive.			✓			see above
Undertake a REOI process for the long term future of the		✓				see above

Halfway House						
Fence out the eastern faces above the stream and below the motorway.					✓	see above
Assess the need to replace the ford crossing the stream.				✓		see above
Upgrade the entrance to the reserve and locate an appropriate sign.					✓	see above
Develop a small car park but allow for later extension.					✓	see above
Explore linkages to surrounding reserves and parks and in particular, access through the neighbouring property to Wingfield Reserve.					Years 6 to 10	see above
Identify a suitable site for a new community park in Upper Stebbings Valley as part of a future reserves Agreement.						Future Reserves Agreement condition
Identify suitable sites for a new dog exercise areas in Stebbings Valley						Future Reserves Agreement condition
Provide new playgrounds						
Lower Stebbings (local)						Future Reserves Agreement condition
Amesbury Drive as part of the school development (Community)		✓				Funded as part of new school development
Upper Stebbings (to be negotiated)						Future Reserves Agreement condition

Upgrade Playgrounds						
Chorley Grove					Upgrade scheduled for years 6-10	Existing funding CX181
Edward Wilson					✓	Existing funding CX181
Decommission Burbank Crescent play area once Edward Wilson has been upgraded.					✓	Existing funding C559
Develop an artificial sports surface suitable for training and soccer in conjunction with the development of the new school for Churton Park		✓	✓			Funded as part of new school development
Negotiate access from the reservoir in Stebbings Valley onto Ohariu Ridge and north to 944 Ohariu Valley Road				✓		Existing funding C524
Investigate a cross valley link from 944 Ohariu Valley Road to Marshall Ridge and down Stebbings Stream to Westchester Drive extension and Glenside.						Future Reserves Agreement condition plus some external funding
Investigate the establishment of a cross valley link between Glenside and Grenada Village via Mark Avenue Extension.					✓	New initiative funding
Investigate track linkages and new farm fencing for grazing in Reserve Erlestoke and adjacent reserves			✓	✓		Existing funding CX437
Develop a link track between Lakewood Reserve and the proposed neighbourhood centre.					Years 6-10	Existing funding CX435
Investigate a possible track link between Churton Park, Ohariu Valley Road and Old Coach Road.					Years 6-10	New initiative funding
Extend pest and weed control programme to include:						

4 Chippenham				✓	✓	Existing funding C509/510
Handley Grove				✓	✓	Existing funding C509/510
Enhancement restoration planting at Handley Grove					✓	Existing budget C524
Riparian restoration plan required for Railway Land - Duncan St			✓			Existing budget C524
Continue to support community riparian planting at Rowells Road Reserve	✓	✓	✓	✓	✓	Existing budget C513
<b>Grenada North, Paparangi, Newlands</b>	<b>08/09</b>	<b>09/10</b>	<b>10/11</b>	<b>11/12</b>	<b>12/13</b>	<b>Funding Source</b>
Investigate the development of a Community Park in Newlands /Paparangi and how it will fit with the Newlands Suburban Centre redevelopment.		✓				Existing funding for planning A004. Implementation subject to a decision on Charles Plimmer Bequest funding
Confirm the site for a new community park in Lincolnshire Farms as part of a future Reserves Agreement.						Future Reserves Agreement condition
Identify a site for a future Dog Exercise Area in Lincolnshire Farms						Future Reserves Agreement condition
Provide a new playground in Kentwood Drive (Local),		✓				Existing funding CX181
Upgrade Playgrounds						
Cheyne Walk					Upgrade not yet scheduled	Existing funding CX181
Grenada North	✓					Existing funding CX181
Salford Street	✓					Existing funding CX181
Lynfield Lane					Upgrade scheduled	Existing funding CX181

					for years 6-10	
Investigate future recreational options for Pinkerton Park.			✓	✓		Existing funding A004
Investigate the future options for Jay Street Reserve	✓					Existing funding A004
Upgrade Mark Avenue toilets and pavillion						Asset Management Plan change required.
Investigate the feasibility of extending the sport fields at Grenada North Park as part of the Lincolnshire Farms development						Future Reserves Agreement condition
Develop a track from Horokiwi to Seton Nossiter Park via Lincolnshire Farms and Belmont Gully.						Future Reserves Agreement condition
Investigate the development of a link between Horokiwi and Belmont Regional Park.					Years 6-10	New initiative funding
Prepare a landscape concept plan for Carribbean Ave reserve (ex-Transpower block)				✓		Existing funding A004
Undertake riparian planting-Seton Nossiter			✓	✓	✓	Existing funding C514
Extend pest control programme to include:						
Henly Estate Reserve (weed and mustelid)	✓	✓	✓	✓	✓	Existing funding C509/510
Seton Nossiter (weed control)		✓	✓	✓	✓	Existing funding C509
<b>Johnsonville</b>	<b>08/09</b>	<b>09/10</b>	<b>10/11</b>	<b>11/12</b>	<b>12/13</b>	<b>Funding Source</b>
Prepare a master plan for Johnsonville Memorial Park and Alex Moore Park and investigate the opportunities to maximise their respective and complementary facilities.	✓					Subject to a decision on future Charles Plimmer Bequest Funding

Upgrade Playgrounds						
Kipling Street					✓	Existing funding CX181
Branscombe Street				✓		Existing funding CX181
Gilbert Young Play Area					Upgrade scheduled for years 6-10	Existing funding CX181
Decommission Meekwood Reserve Play Area once Branscombe has been upgraded.				✓		Existing funding C559
Extend pest control programme to include: Totara Park (weed and animal)	✓	✓	✓	✓	✓	Existing funding C509 and C510
Monitor forest health						
Totara Park		✓	✓	✓	✓	Existing funding A004
Facilitate the amalgamation of sports clubs into a custom built facility on Alex Moore Park.	✓	✓				Existing funding A004
<b>Harbour Escarpment</b>	<b>08/09</b>	<b>09/10</b>	<b>10/11</b>	<b>11/12</b>	<b>12/13</b>	<b>Funding Source</b>
Prepare a plan for the development of a dog exercise park at Waihinahina Park.					Years 6-10	Existing funding A004
Upgrade Brandon's Rock (Edgecombe Street) Play Area,		✓				Existing funding CX181
Complete the Harbour Escarpment walkway from Waihinahina Park – in memory of Dennis Duggan to Ngauranga.	✓	✓	✓	✓	✓	Existing funding CX435
Prepare a landscape concept plan for Brandon's Rock Reserve		✓				Existing funding A004
Ongoing pest management at Gilberts Bush	✓	✓	✓	✓	✓	Existing funding C509/510
Monitor forest health						
Dungarven Road		✓	✓	✓	✓	Existing funding A004
Tamworth Cres		✓	✓	✓	✓	Existing

						funding A004
Gilberds Bush		✓	✓	✓	✓	Existing funding A004