

## Appendix Two

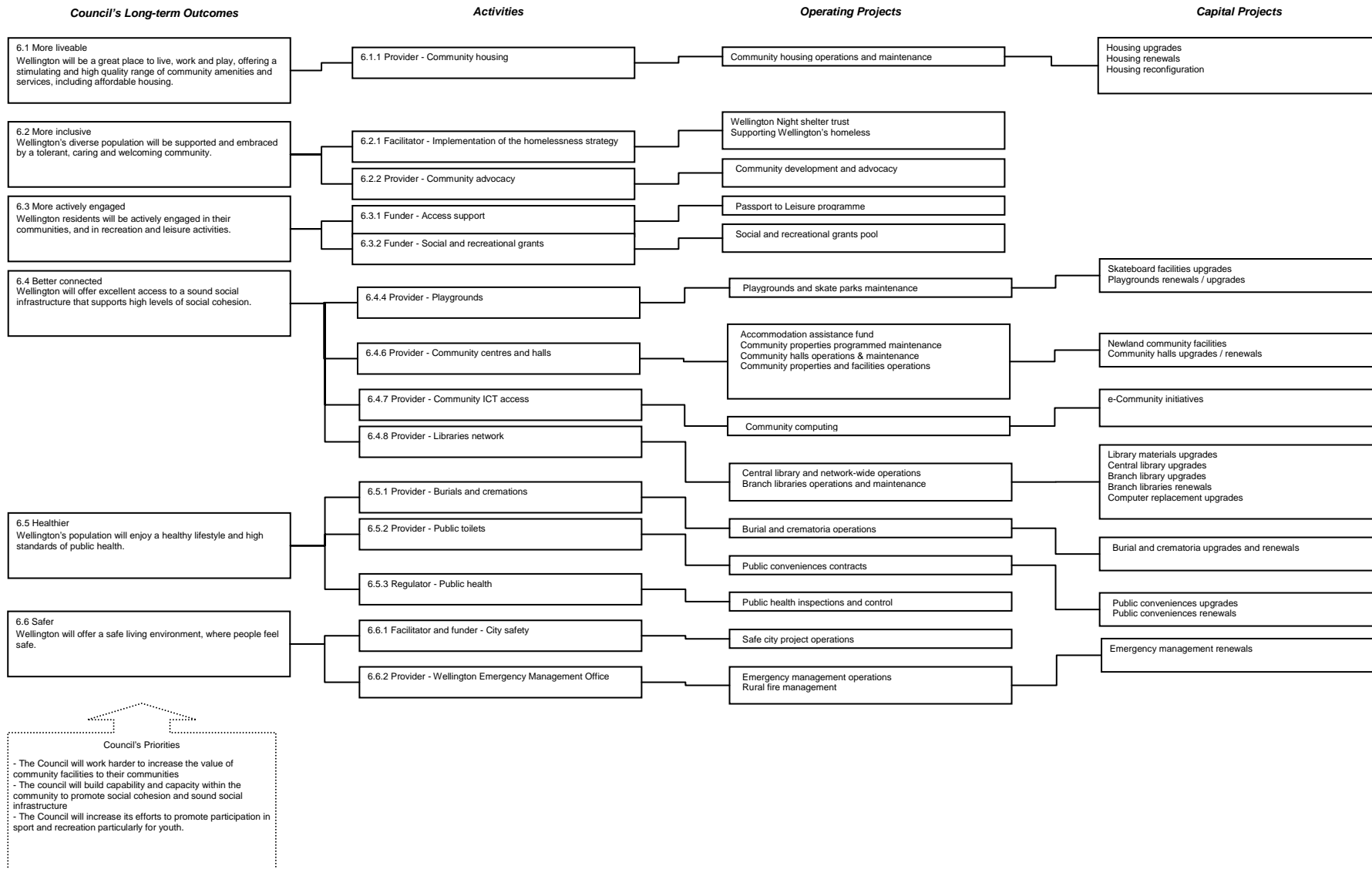
### Portfolio Leaders - Areas of Responsibility

The 2006/07 – 2015/16 Long Term Council Community Plan (LTCCP) details the Outcomes, Activities, Projects and related expenditure for the seven Wellington City Council strategies. The Portfolio Leader's areas of responsibility align with these strategies.

<b>Portfolio Area</b>	<b>LTCCP Strategy</b>
<b>Social</b>	<b>Social and Recreation (part)</b>
<b>Environment</b>	<b>Environment</b>
<b>Cultural Wellbeing</b>	<b>Cultural Wellbeing</b>
<b>Economic Development and Recreation</b>	<b>Economic Development</b>
	<b>Social and Recreation (part)</b>
<b>Urban Development and Transport</b>	<b>Urban Development</b>
	<b>Transport</b>
<b>Governance</b>	<b>Governance</b>
<b>Climate Change and Sense of Place</b>	<b>Cross-strategy</b>

# Social Portfolio

Covers the following LTCCP strategy outcomes, activities and projects: **Social and Recreation Strategy (part)**



**Other Strategies, Policies and Plans:**

Homelessness Strategy	Library
Accommodation assistance for	Leases policy for community & recreation
Community Groups	groups
Casino policy	Liquor Licensing
Circuses policy	Mobility Parking
Community access to venues	Museums
Community facilities	Older Persons Policy
Dog Control	Playgrounds
Gaming venues	Street performance and busking policy
Housing grants	Public Conveniences
Relevant bylaws	

---

# Environment Portfolio

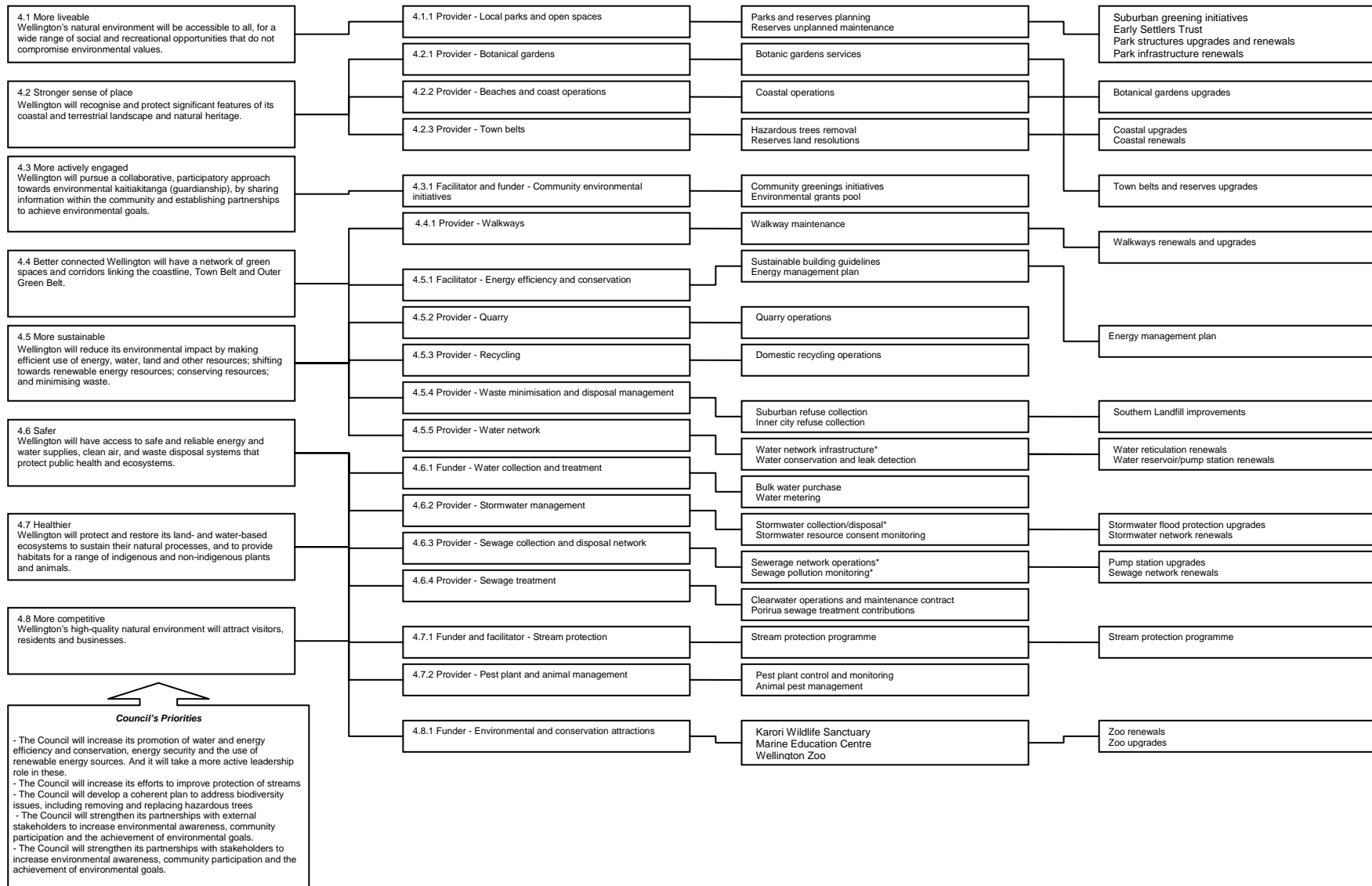
Covers the following LTCCP strategy outcomes, activities and projects: **Environmental Strategy**

## Council's Long-term Outcomes

## Activities

## Operating Projects

## Capital Projects



\*Note that these cover a number of projects, which are noted under each activity

**Other Strategies, policies and plans:**

Capital Spaces

Energy and Climate

Closed landfills

Environmentally friendly purchasing

Mountain biking

Open space naming

Waste Management plan

Verges

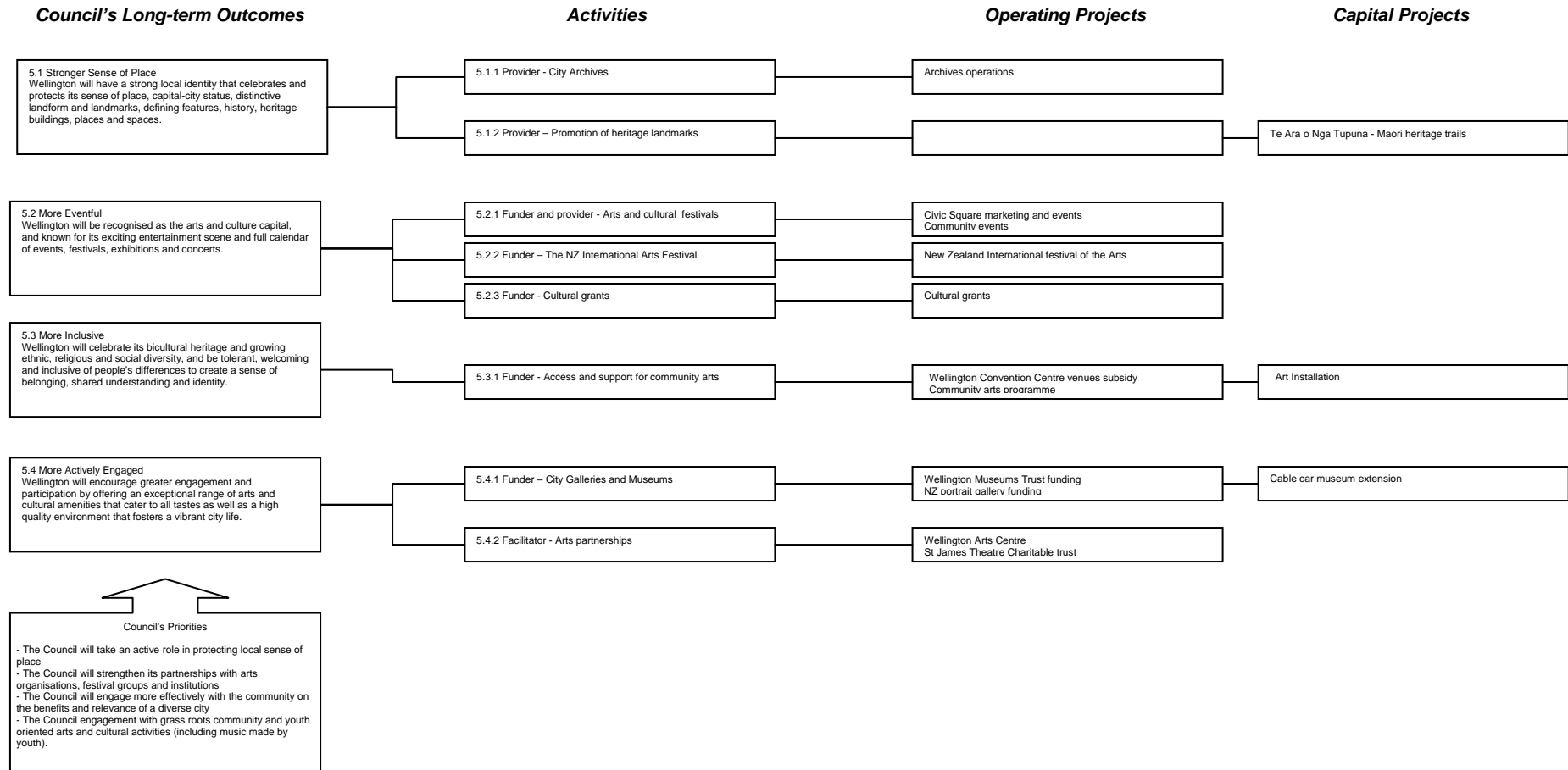
Pest management

Town Belt reinstatement

Relevant bylaws

# Cultural Wellbeing Portfolio

Covers the following LTCCP strategy outcomes, activities and projects: **Cultural Wellbeing Strategy**



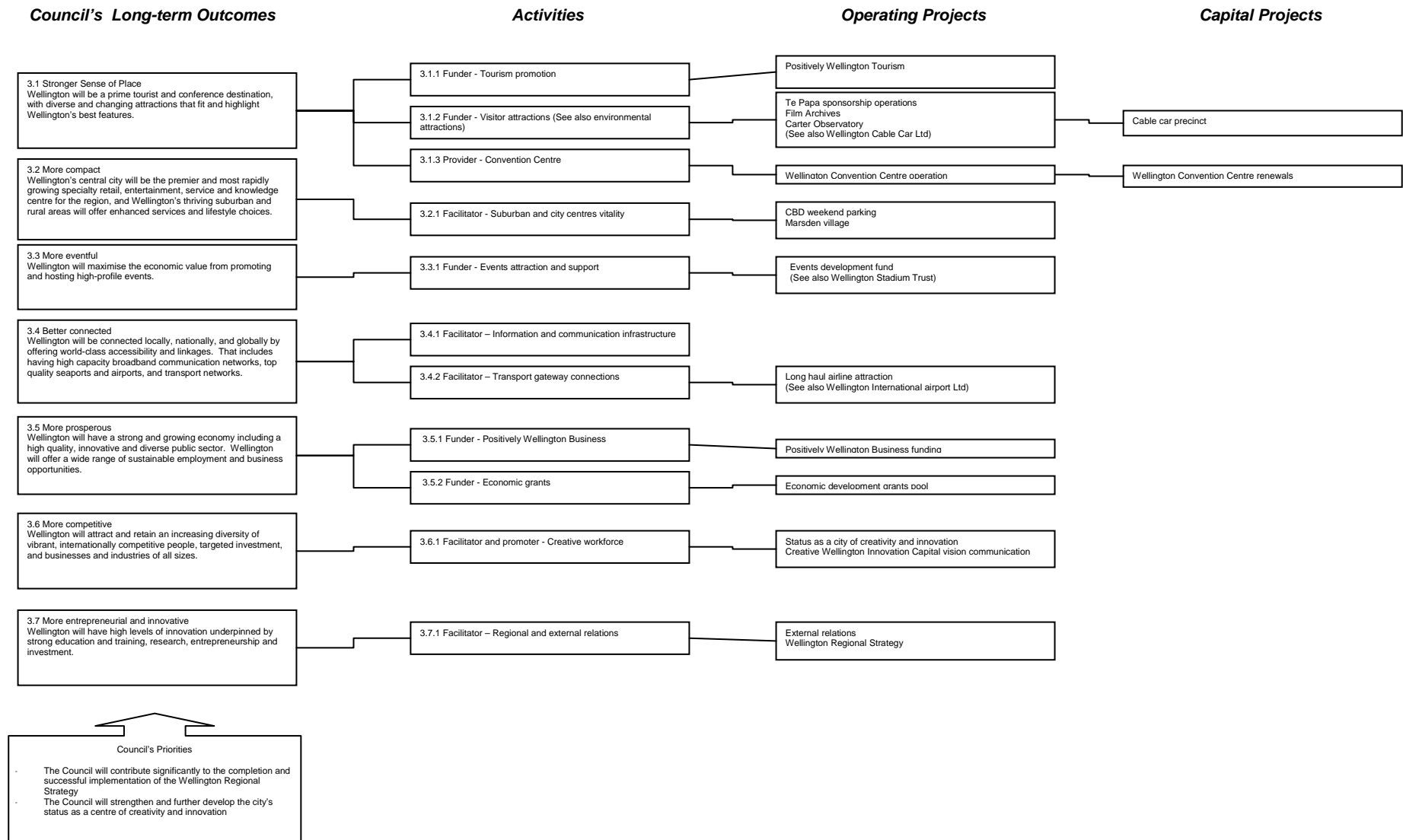
## Other Strategies, policies and plans:

Arts Collection  
Public Art

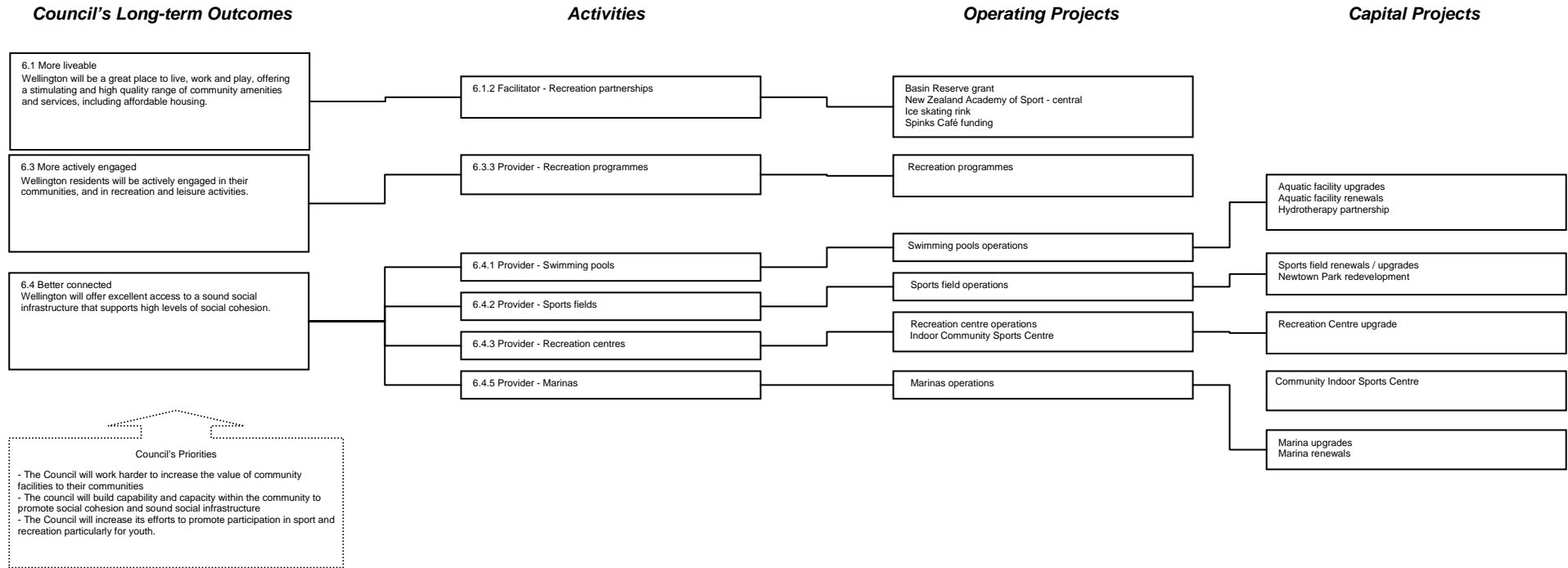
Relevant Bylaws

# Economic Development and Recreation Portfolio

Covers the following LTCCP strategy outcomes, activities and projects: **Economic Development Strategy**



# Social and Recreation Strategy (part)



## Other Strategies, polices and plans:

Creative Wellington - Innovation capital  
 Event Strategy  
 International Relations  
 Property matters not covered by other portfolios or a chair of another Committee or Subcommittee

Retail Strategy  
 Incentives  
 Relevant Bylaws  
 Broadband

# Urban Development and Transport Portfolio

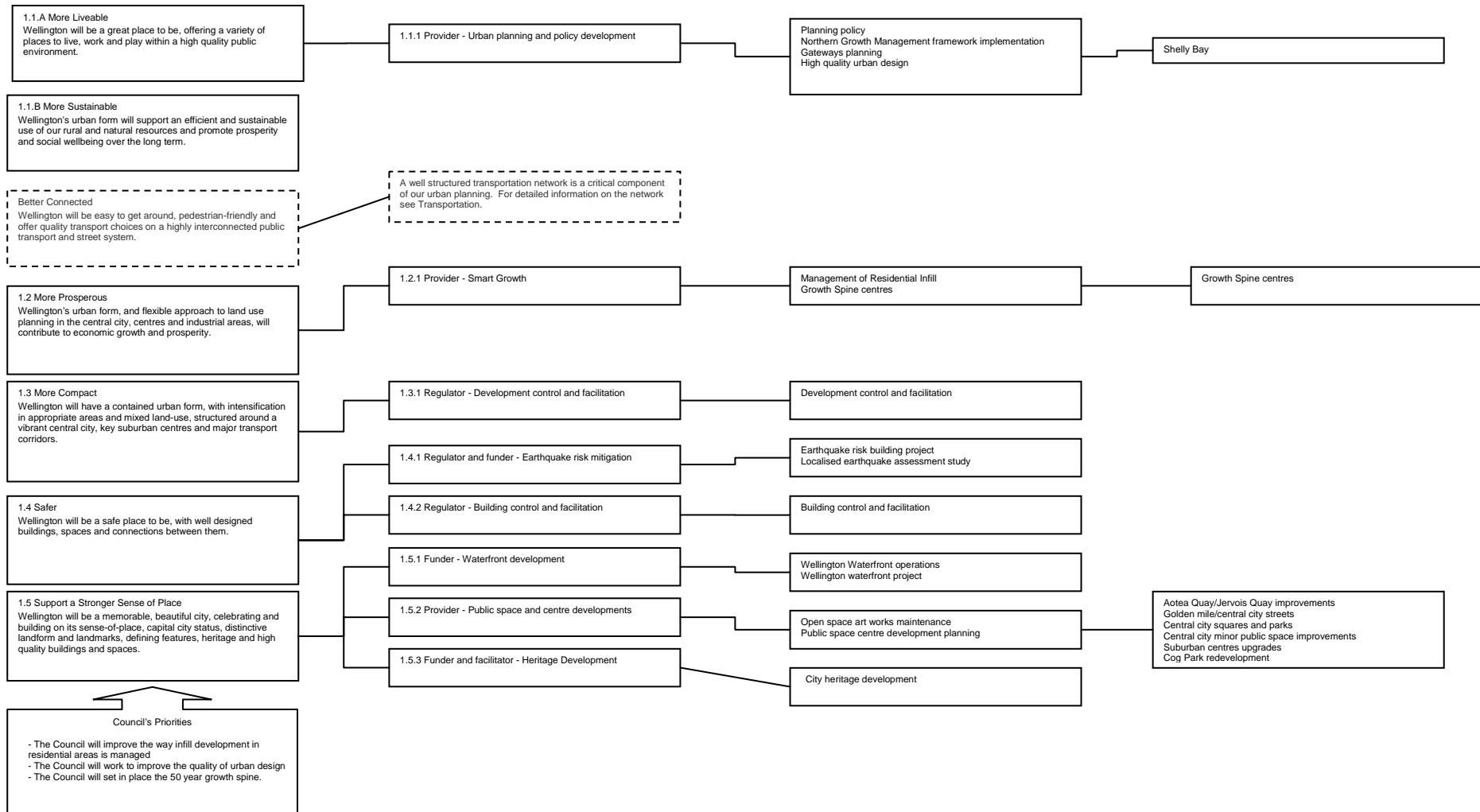
Covers the following LTCCP strategy outcomes, activities and projects: **Urban Development Strategy**

## Council's Long-term Outcomes

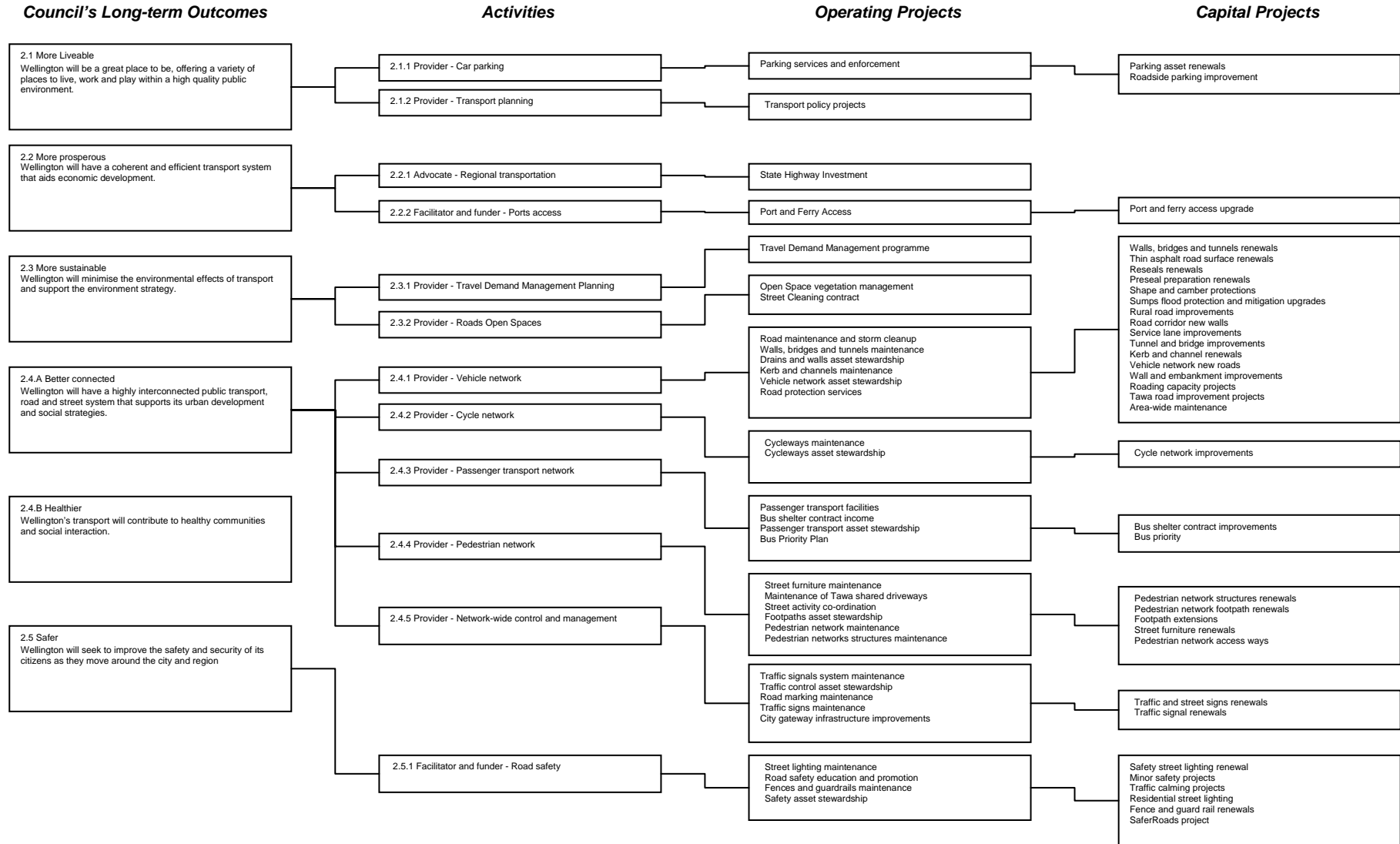
## Activities

## Operating Projects

## Capital Projects



# Transport Strategy



**Other Strategies, policies and plans:**

District Plan

Waterfront Development plan

Building Safety

Wellington Regional Strategy (under development)

Built heritage

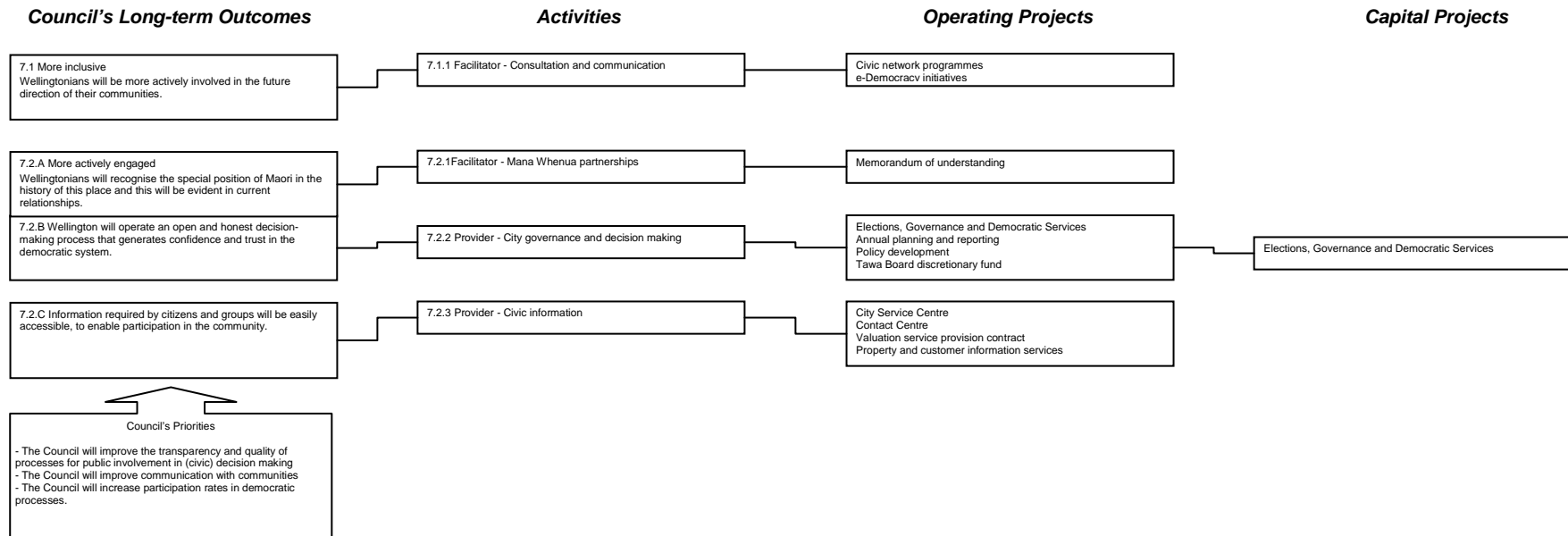
Road naming

Wellington Regional Land Transport Strategy (under review)

Relevant Bylaws

## Governance Portfolio

Covers the following LTCCP strategy outcomes, activities and projects: **Governance Strategy**



### **Other Strategies, policies and plans:**

Memoranda of Understanding  
Code of conduct  
Council processes and decision-making  
Accountability processes of Council and Committee Leaders  
Terms of reference and delegations of Council, Committees and Subcommittees  
Committee Structure

Consultation policy  
Local Government Statement  
e-Democracy  
Standing orders  
Election related matters including the Representation Review  
Community Board delegations

## **Climate Change and Sense of Place Portfolio**

The portfolio is responsible for cross-strategy matters that relate to its areas of responsibility below.

### **Areas of Responsibility:**

Climate change  
Sense of Place

### **Areas**

Green buildings  
Sustainable transport management  
Green economy  
Sustainable infrastructure  
Energy management  
Sense of Place initiatives

## Chair, Strategy and Policy Committee

The Chair of the Strategy and Policy Committee also covers organisational areas.

### Areas of Responsibility include:

SPC Forward Programme  
LTCCP/Annual Plan

### Policies

Funding Impact Statement and Rating  
(part of 2004/05 Annual Plan)  
Funding 2001-04

Investment

Liability

Rates Penalty Remission

Rates Postponement

Rates Rebate

Rates Remission and Postponement

Remissions on Land used principally for  
Games or Sport

Remission of rates on Maori Freehold  
Land

Remission of rates on Rural and Farm  
Land

Revenue and Finance

Road Encroachment and Sale

Significance Policy

Special Circumstances Remission

## Other matters

- Reports that recommend attendance at conferences will be allocated to the Portfolio Leaders to introduce depending on the subject matter of the conference.
- Conference report backs will be introduced by the Elected Members who prepared the report.
- Reports from Committees and Subcommittees will be introduced by their Chair, or appointed nominee.
- Policy and related matters that relate to a particular committee or subcommittee (e.g. Grants and Grants Subcommittee, Development Contributions and Development Contributions Subcommittee) will be introduced by the Chair of the relevant committee/subcommittee.