

Thank you for the opportunity to speak today .

I would refer you first to the meeting held by Council on 1st December to where various organisations were invited to take part in discussions, and “transparency” and “consultation” were words often used.

Therefore what a surprise to read the report on options considered for the future of WWLtd and would refer you to Page 4 of the Quarterly report tabled at the council meeting in December where under Work plan implementations reference is made to pre mediation discussions with DPV11 submitters and that engagement will be maintained..... and on page 3 bullet point 2 reference to workshops for the master plan for the Outer T (blue sky competition) but as I understand the finalists have had little input.... Council Officers are always available but apart from a meeting arranged by the late Chair of the Board Mr Cashin with members of Waterfront Watch Committee, in July 2009, we have had no positive communication with the company since except for one meeting “without prejudice” on V11. We represent a large and loyal membership who have expressed their outrage and concerns to us at the complete disregard to their opinions which we have presented on their behalf for over 10 years and yesterday was approached by a member from 1999 who said it is now our children and grandchildren for whom we are trying to preserve open public space, and also the comment from a member “when is the tail going to stop wagging the dog!

With regard to the Pictorial reminder Review, perhaps it is timely to remind new councillors in particular what could have happened without the work of Waterfront Watch, Civic Trust and Chaffers Make it Happen to stop 20 buildings, including two twin towers of up to 12 storeys and Frank Kitts Park walled off from the city and six new buildings on Chaffers Park and some credit for their input into the open recreation space A timely reminder that if Variation 17 (which attracted over 2000 submissions and a packed meeting at the Town Hall) had gone ahead public space now on the waterfront would have been minimum and if the Ambulance building had been moved (with a large high rise building in its place) where would the Waka House have gone.

Finally the photos I have distributed show the latest landscaping and continuous improvement to the Picton port and marina area and would like to point out the new toilets built for half the price of the so called “designer dunnies”and blend in with the new landscaping and low rise buildings (all pertaining to activities in the region).

Pauline Swann

WATERFRONT

Plenty of time for changes

WHATEVER decision is made on the future of the waterfront, developments won't happen any time soon.

The planning process takes months, even before developers can start working on their buildings.

Public submissions on whether Variation 17 should be included in Wellington City's District Plan close on February 7. Any individual or group can make submissions about the whole of the variation or any parts of it.

After council staff have read and summarised the submissions, they will be advertised so people can make counter-submissions. They can oppose or support submissions already lodged but cannot introduce new information.

Meanwhile, the council will appoint independent commissioners to consider the submissions and counter-submissions, and make a decision.

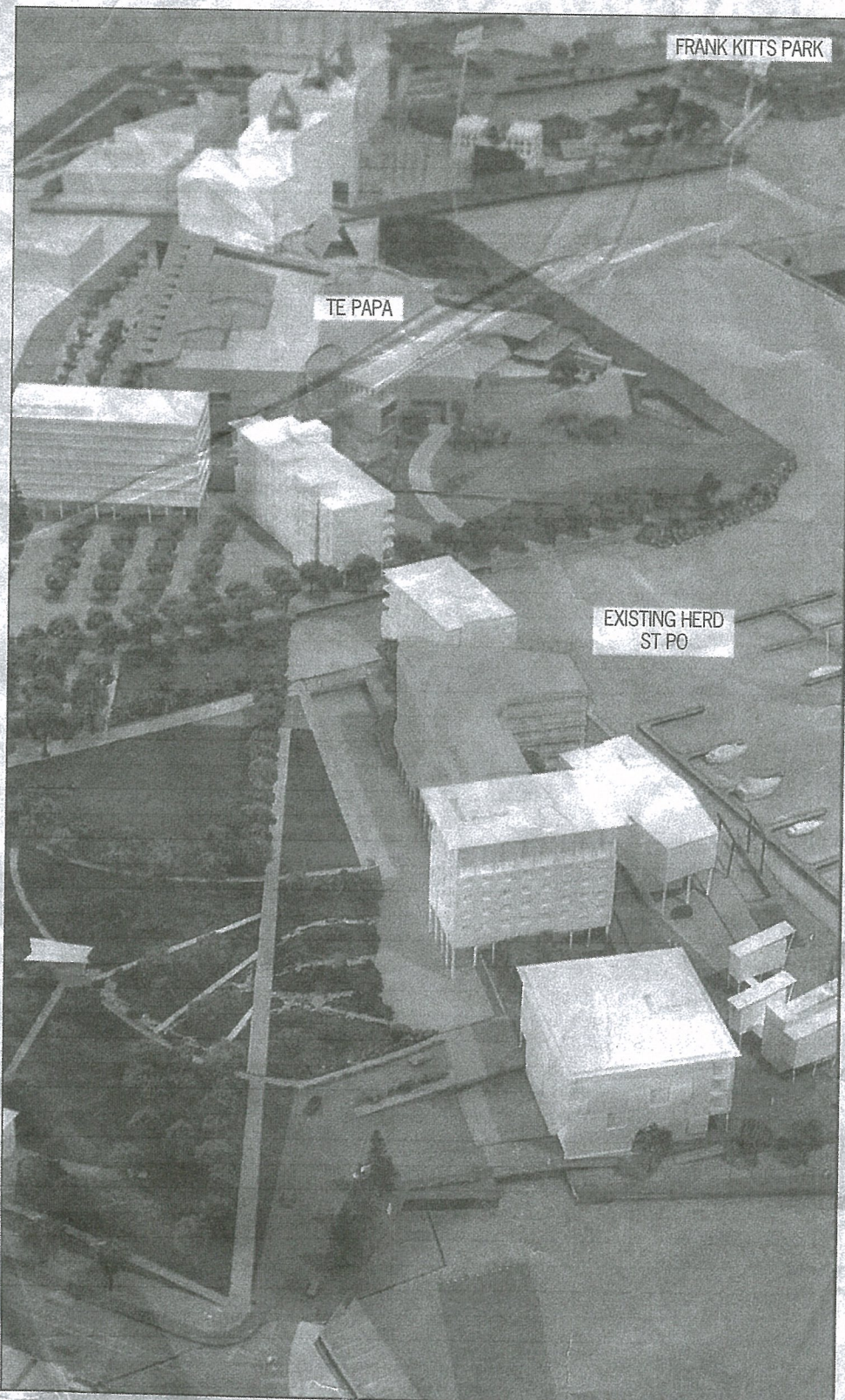
All or part of the decision can then be appealed to the Environment Court, which is rarely able to make rulings quickly.

FIND OUT MORE

■ People wanting to know more about the waterfront proposals can call the telephone hotline set up by the Lambton Harbour Community Advisory Group. The hotline, 801 4005, will receive questions and comments 24 hours a day until February 7.

■ The group can also be contacted via e-mail: lh.cag@extra.co.nz

■ A large model of the proposed waterfront development is on public display in the reception area of the council offices in Wakefield St.



Chiffrers Park with the Herd St Post Office is at centre right near Chiffrers Marina, with the Museum at left, with several new buildings screening it from the waterfront. Aerial photo: PHIL REID

up Poll survey found 49 percent of Australians ex-

rubber-stamped for the... adopted - after lengthy public consultation



Between Frank Kitts Park and the Maritime Museum, a new seven-storey high building

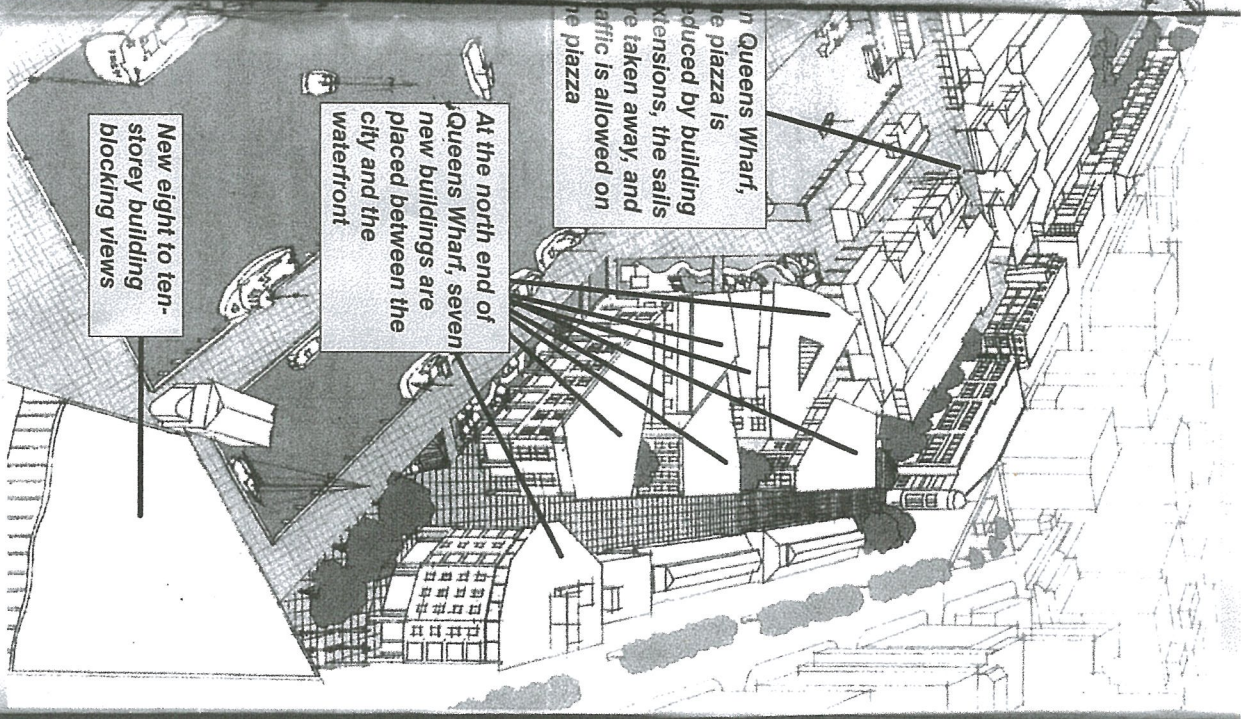
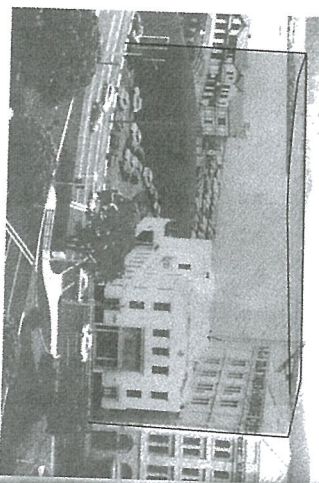
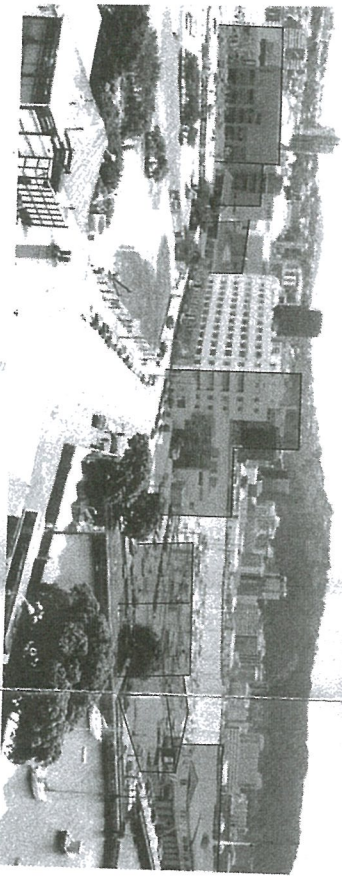
Frank Kitts Park and the harbour are walled off from the city by a new building five storeys high, which reduces the park's open spaces, and reduces sunshine on the park

At the end of Queens Wharf, new buildings block views and destroy panoramas

In Queens Wharf, the plaza is reduced by building extensions, the sails are taken away, and traffic is allowed on the plaza

At the north end of Queens Wharf, seven new buildings are placed between the city and the waterfront

New eight to ten-storey building blocking views



The Wall: potential building sites and heights

